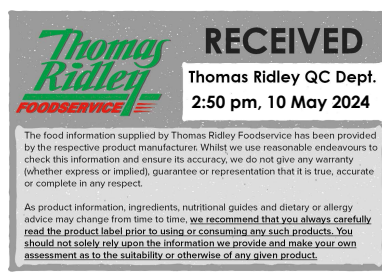


Changed May 09, 2024 10:53
Reviewed May 09, 2024 10:53
Erudus ID 3aea1b09c9964ecba312fe3a49ecd0fc
Version 2.0



06558

LEMON AND ELDERFLOWER MINI LOAF (3 x 4 ptn)

Lemon And Elderflower Mini Loaf 3x70g

PRODUCT DESCRIPTION

A lemon flavoured mini loaf, topped with a sweet lemon and elderflower flavour frosting and edible flowers.

Brand	The Handmade Cake Co.
Manufacturer Product Code	079160
Product Type	Food
Product Category	Cakes and Tarts
Storage Type	Frozen
Erudus ID	3aea1b09c9964ecba312fe3a49ecd0fc
Specification Type	Bakery Products



Outer Case GTIN 5060044079160



INGREDIENTS

Ingredient Declaration

Sugar, WHEAT Flour (with Calcium Carbonate, Niacin, Iron, Thiamin), Rapeseed Oil, Pasteurised Free Range EGG, Water, Vegetable Margarine [Palm Oil, Rapeseed Oil, Water, Salt, Emulsifier (E471), Natural Flavouring], Full Fat Soft Cheese [Full Fat Soft Cheese (MILK), Thickener (Guar Gum)], Skimmed MILK Powder, Chicory Root Fibre, Natural Sicilian Lemon Flavouring (0.8%), Raising Agents (E450, E501), Concentrated Lemon Juice (0.3%), Edible Rainbow Flower Petal Mix (0.2%) [Pink and Red Rose Petals, Cornflower Petals, Marigold Petals], Lemon Oil (0.1%), Elderflower Flavouring (0.1%).

ALLERGENS

Product Contains:

Celery/Celeriac	No
Cereals Containing Gluten	Yes
Barley	No
Oats	No
Rye	No
Wheat (including Spelt and Khorasan)	Yes
Crustacea	No
Eggs	Yes
Fish	No
Lupin	No
Milk	Yes
Molluscs	No
Mustard	No
Nuts (Tree)	May Contain
Almond nuts	May Contain
Brazil nuts	May Contain
Cashew nuts	May Contain
Hazelnuts	May Contain
Macadamia (Queensland) nuts	May Contain
Pecan nuts	May Contain
Pistachio nuts	May Contain
Walnuts	May Contain
Peanuts	No
Sesame Seeds	No
Soybeans	No
Sulphur Dioxide and Sulphites	No

Risk Source:

Additional Allergen Information

For allergens, including cereals containing gluten, see ingredients in BOLD. This product may contain traces of nuts as it has been made in a bakery that uses nut ingredients.

SUPPLEMENTARY INGREDIENT INFORMATION

Palm Oil	Yes
Hydrogenated Vegetable Oil/Fat	Yes
GM Protein/DNA	No

ADDITIVES

Product Contains:

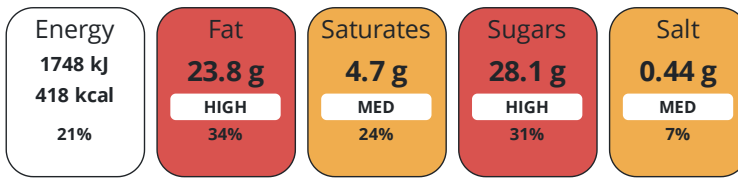
Artificial Antioxidants	No
Artificial Colours	No
Artificial Flavour Enhancers	No
Artificial Flavourings	No
Artificial Preservatives	No
Artificial Sweeteners	No

DIET SUITABILITY

Vegan Diet	No	Vegetarian Diet	Suitable for
Halal Diet	No	Kosher Diet	No

NUTRITIONAL INFORMATION

Each 100g/ml portion contains:



of your reference intake.

Typical values per 100g/ml : Energy 418kcal / 1748kJ

Nutrient	per 100g	RI per 100g	per 75g serving	RI per 75g serving
Energy (kJ)	1748 kJ	21%	1311 kJ	16%
Energy (kcal)	418 kcal	21%	313.5 kcal	16%
Fat	23.8 g	34%	17.9 g	26%
of which Saturates	4.7 g	24%	3.5 g	18%
Carbohydrate	44.6 g	17%	33.5 g	13%
of which Sugars	28.1 g	31%	21.1 g	23%
Fibre	2.2 g		1.7 g	
Protein	5.5 g	11%	4.1 g	8%
Salt	0.44 g	7%	0.3 g	5%
Serving Size			75 g	

SUPPLEMENTARY NUTRITIONAL INFORMATION

HFSS (HIGH IN FAT, SALT AND SUGAR)

HFSS Status Yes

HANDLING & STORAGE INFORMATION

Directions For Use

Remove film and defrost at room temperature for 2 hours. Serve at room temperature. Once defrosted, store in a cool, dry place. Do not refreeze once defrosted. Consume within 2 days.

Storage Instructions

Keep Frozen Store at -18°C As we do not add stabilisers, 'blooming' may occur on the icing. This is caused by temperature-sensitive ice crystals developing during storage. This poses no risk to food safety. The small crystals will disappear on defrosting.

Shelf Life from Time of Production 240 Days

Exempt From Shelf Life Labelling No

ACCREDITATIONS/ CERTIFICATIONS/ ASSURANCE SCHEMES

BRCGS Certified Roundtable of Sustainable Palm Oil (RSPO)

Other Accreditation

ORIGIN

Product Country of Origin/Place of United Kingdom

Provenance

PRODUCT CHARACTERISTICS

Standards Testing

Do you undertake trend analysis of microbiological results? Yes

Is shelf life testing undertaken? Yes

Microbiological Standards

Organism	Description	Frequency	Target	Maximum	Sample (g or ml)
Enterobacteriaceae (cfu/g or ml)		Annually	<100	10000	1

Organism	Description	Frequency	Target	Maximum	Sample (g or ml)
Listeria SPP (cfu/g or ml)	Detected/Not detected in 25g	Annually	=0	0	25
Staphylococcus Aureus (cfu/g or ml)		Annually	<20	10000	1
Salmonella (cfu/g or ml)	Detected/Not detected in 25g	Every 6 months	=0	0	25
Yeast (cfu/g or ml)		Annually	<100	10000	1
Moulds (cfu/g or ml)		Annually	<100	10000	1

Physical Standards

Test	Description	Frequency	Target	Range	Sample (g or ml)
Dimensions Height (mm)	3 cakes checked per batch	Annually	>38	38 to 47	70
Weight (g)	3 cakes checked per batch	Every Batch	>70	70 to 80	70

CONFIGURATION

Case Configuration

Total Quantity of Inner Components in Outer Case 3 Units

Is the Outer Case Splittable? No

Inner Pack Configuration

PRODUCT WEIGHTS

Inner Component

Variable Weight Consumer Item No

Inner Component Weight 70 g

Outer Case

Outer Case Gross Weight 1.04 kg

Outer Case Net Weight 0.84 kg

PRODUCT DIMENSIONS

Inner Component

Inner Component Depth 185 mm

Inner Component Width 120 mm

Inner Component Height 60 mm

Outer Case

Outer Case Depth 378 mm

Outer Case Width 225 mm

Outer Case Height 103 mm

PALLET INFORMATION

Quantity of Cases Per Pallet Layer 12 Cases

Quantity of Layers Per Pallet 10 Layers

Quantity of Cases Per Pallet 120 Cases

Pallet Height 1.5 MTR

Pallet Gross Weight 150.4 kg

PACKAGING

Inner Component Packaging

Type	Materials	Weight	Recycled Plastic %	Recyclable	Returnable	Composite
Tray	Plastic	6 g	- %			
Tray	Paper/Cardboard	54 g	- %			

Outer Case Packaging

Type	Materials	Weight	Recycled Plastic %	Recyclable	Returnable	Composite
Case	Paper/Cardboard	140 g	- %			

Transport Packaging

Type	Materials	Weight	Recycled Plastic %	Recyclable	Returnable	Composite
Other	Plastic	2.5 g	- %			
Other	Paper/Cardboard	2.5 g	- %			
Other	Wood	208.3 g	- %			

OTHER INFORMATION

Intrastat/Taric Code	1905907000
Commodity Code	19059070

Manufacturer Comments

Transit packaging given per case based on a full pallet load.

CONTACT INFORMATION

Address

The Handmade Cake Co.
The Bakery
Gardner Road
Maidenhead
Berkshire
SL6 7TU
United Kingdom

P: (Phone) 01628 770908

Technical Contact

Technical Team
Maidenhead.Technical@mdesserts.com

P: (Phone) 01628 770908 Ext. 1052

Complaints Contact

Technical Team
Maidenhead.Technical@mdesserts.com

P: (Phone) 01628 770908 Ext. 1052

The information on the [Erudus System](#) has been supplied by the manufacturers of the products and, whilst the owners of the Erudus System take steps to ensure the information is regularly updated, they give no warranty and no guarantee that the information is accurate. Product information and ingredients may change, please always read product labels carefully in addition to using the information provided by Erudus.

We do not accept liability for any inaccuracies or incorrect information contained on this site.
Please visit <http://www.erudus.com/terms-and-conditions> for full terms and conditions.