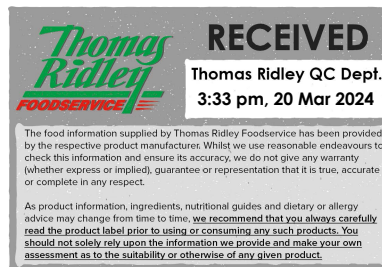


Changed Mar 19, 2024 09:22

Reviewed Mar 19, 2024 09:22

Erudus ID 24ff44f7140d4ae597c9d51791423d31

Version 2.0



06646

FLORA PLANT CREAM 8 X 1L RPK

Blend Of Lentil Protein Preparation And Vegetable Fat And Oil. For Cooking And Whipping 8x1litre

PRODUCT DESCRIPTION

Multipurpose, for cooking and whipping, plant based (non dairy). Fat level 31%. *Non-dairy cream alternative for cooking and whipping. *Blend of lentil protein preparation and vegetable fat and oil.

*For cooking and whipping.

Brand	Flora
Manufacturer Product Code	68183519
Product Type	Food
Product Category	Vegan Cheese and Dairy Substitutes
Storage Type	Chilled
Erudus ID	24ff44f7140d4ae597c9d51791423d31
Specification Type	Alternatives (Vegetarian and Vegan)



Inner Component GTIN 8719200094901



INGREDIENTS

Ingredient Declaration

Lentil protein preparation (water, 1.1% lentil flour), coconut fat, rapeseed oil, sugar, modified corn starch, emulsifiers (sunflower lecithin, sugar esters of fatty acids, mono-and diglycerides of fatty acids), stabilisers (guar gum, locust bean gum), natural flavouring, salt, colour (beta-carotene).

ALLERGENS

Product Contains:

Celery/Celериac	No	Mustard	No
Cereals Containing Gluten	No	Nuts (Tree)	No
Barley	No	Almond nuts	No
Oats	No	Brazil nuts	No
Rye	No	Cashew nuts	No
Wheat (including Spelt and Khorasan)	No	Hazelnuts	No
Crustacea	No	Macadamia (Queensland) nuts	No
Eggs	No	Pecan nuts	No
Fish	No	Pistachio nuts	No
Lupin	No	Walnuts	No
Milk	No	Peanuts	No
Molluscs	No	Sesame Seeds	No
		Soybeans	No
		Sulphur Dioxide and Sulphites	No

Additional Allergen Information

N/A

SUPPLEMENTARY
INGREDIENT
INFORMATION

Palm Oil	No
Hydrogenated Vegetable Oil/Fat	No
GM Protein/DNA	No

ADDITIVES

Product Contains:

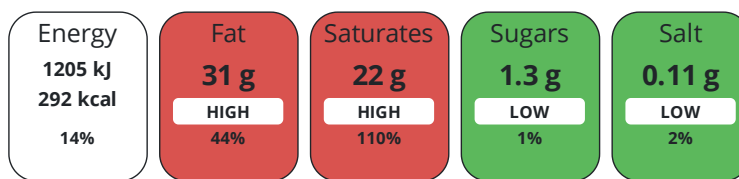
Artificial Antioxidants	No	Artificial Flavourings	No
Artificial Colours	No	Artificial Preservatives	No
Artificial Flavour Enhancers	No	Artificial Sweeteners	No

DIET
SUITABILITY

Vegan Diet	Suitable for	Vegetarian Diet	Suitable for
Halal Diet	Suitable for	Kosher Diet	Suitable for

NUTRITIONAL
INFORMATION

Each 100g/ml portion contains:



of your reference intake.

Typical values per 100g/ml : Energy 292kcal / 1205kj

Nutrient	per 100ml	RI per 100ml
Energy (kJ)	1205 kJ	14%
Energy (kcal)	292 kcal	15%
Fat	31 g	44%
of which Saturates	22 g	110%
Carbohydrate	2.3 g	1%
of which Sugars	1.3 g	1%
Fibre	< 0.5 g	
Protein	0.6 g	1%
Salt	0.11 g	2%
Sodium	44 mg	

Source of Nutritional Information Calculation from known/accepted datasets

SUPPLEMENTARY
NUTRITIONAL
INFORMATION

HFSS (HIGH IN
FAT, SALT AND
SUGAR)
HANDLING &
STORAGE
INFORMATION

HFSS Status Not Applicable (out of scope, exempt)

Directions For Use

Cooking and whipping. A dairy cream alternative that is plant based and allergen free that delivers the same creamy richness as dairy. For use where ever you use dairy cream.

Storage Instructions

Between 2-7 degree Celsius. Once opened, keep refrigerated and use within 3 days. Do not freeze.

Storage Instructions After Opening

Once opened, keep refrigerated and use within 3 days.

Shelf Life from Time of Production	270 Days	Exempt From Shelf Life Labelling	No
---	----------	---	----

ACCREDITATIONS/
CERTIFICATIONS/
ASSURANCE
SCHEMES
ORIGIN

FSSC 22000

Product Country of Origin/Place of Germany

Provenance

Additional Origin Details

Kleve factory, Germany

PRODUCT
CHARACTERISTICS

Standards Testing

Do you undertake trend analysis of microbiological results? No

Is shelf life testing undertaken? Yes

Commercially Sterile Yes

Analytical Standards

Test	Description	Frequency	Target	Range	Sample (g or ml)
Fat Content (%)	ISO-2446 (GERBER)	Every Batch	=31	30 to 32	1000
pH		Every Batch	=6.7	6.3 to 6.9	1000

CONFIGURATION

Case Configuration

Inner Pack Configuration

Total Quantity of Inner Components in Outer Case 8 Units

Is the Outer Case Splittable? No

PRODUCT
WEIGHTS

Inner Component

Variable Weight Consumer Item No

Inner Component Volume 1 litre

Outer Case

Outer Case Gross Weight 8.23 kg

Outer Case Net Weight 8.08 kg

PRODUCT
DIMENSIONS

Inner Component

Inner Component Depth 63 mm

Inner Component Width 49 mm

Inner Component Height 171 mm

Outer Case

Outer Case Depth 266 mm

Outer Case Width 200 mm

Outer Case Height 197 mm

PALLET
INFORMATION

Quantity of Cases Per Pallet Layer 22 Cases

Pallet Height 1.13 MTR

Quantity of Layers Per Pallet 5 Layers

Pallet Gross Weight 933 kg

Quantity of Cases Per Pallet 110 Cases

PACKAGING

Inner Component Packaging

Type	Materials	Weight	Recycled Plastic %	Recyclable	Returnable	Composite
Tetra Pack	Plastic	4 g	- %			
Tetra Pack	Aluminium	0.1 g	- %			
Tetra Pack	Other	27 g	- %			

Outer Case Packaging

Type	Materials	Weight	Recycled Plastic %	Recyclable	Returnable	Composite
Case	Paper/Cardboard	188 g	- %			

Transport Packaging

Type	Materials	Weight	Recycled Plastic %	Recyclable	Returnable	Composite
Other	Wood	22000 g	- %			

OTHER INFORMATION

Manufacturer Comments

Outer case barcode 8719200103313

CONTACT INFORMATION

Address

Upfield Foods UK
 Upfield UK Services Limited
 14-21 Rushworth Street
 London
 London
 SE1 0RB
 United Kingdom

Technical Contact

Alessandra Gangemi
 Technical Specialist
 alessandra.gangemi@upfield.com

P. (Phone) TBC

Complaints Contact

Paula Castro
 Technical Manager
 paula.dejesuscastro@upfield.com

P. (Phone) 07557549204

The information on the [Erudus System](#) has been supplied by the manufacturers of the products and, whilst the owners of the Erudus System take steps to ensure the information is regularly updated, they give no warranty and no guarantee that the information is accurate. Product information and ingredients may change, please always read product labels carefully in addition to using the information provided by Erudus.

We do not accept liability for any inaccuracies or incorrect information contained on this site.
 Please visit <http://www.erudus.com/terms-and-conditions> for full terms and conditions.