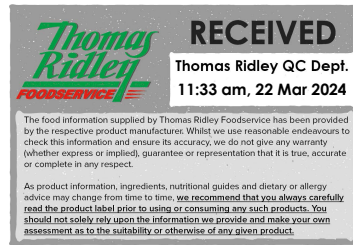


Changed Mar 22, 2024 11:24

Reviewed Mar 22, 2024 11:24

Erudus ID 1c5bf4657fe841aca169090bb1ec007e

Version 2.0



**Thomas Ridley**  
FOODSERVICE

**RECEIVED**  
Thomas Ridley QC Dept.  
11:33 am, 22 Mar 2024

The food information supplied by Thomas Ridley Foodservice has been provided by the respective product manufacturer. Whilst we use reasonable endeavours to check this information and ensure its accuracy, we do not give any warranty (whether express or implied), guarantee or representation that it is true, accurate or complete in any respect.

As product information, ingredients, nutritional guides and dietary or allergy advice may change from time to time, we recommend that you always carefully read the product label prior to using or consuming any such products. You should not solely rely upon the information we provide and make your own assessment as to the suitability or otherwise of any given product.



06685

# RED GIRASOLI WITH CHICKPEAS AND VEGETABLES (3KG CASE)

Red Girasoli With Chickpeas And Vegetables 1x3kg

## PRODUCT DESCRIPTION

Frozen gastronomic speciality. Filled pasta with chickpeas and vegetables.

<b>Brand</b>	Surgital S.p.A
<b>Manufacturer Product Code</b>	S137
<b>Effective Date</b>	Mar 22, 2024
<b>Product Type</b>	Food
<b>Product Category</b>	Pasta, Rice and Noodles
<b>Storage Type</b>	Frozen
<b>Erudus ID</b>	1c5bf4657fe841aca169090bb1ec007e
<b>Specification Type</b>	Generic



Outer Case GTIN 8006967019033



## INGREDIENTS

### Ingredient Declaration

Filling ingredients 61%: chickpeas 46% (chickpeas 80%, water), onion 25%, CELERY 20%, bread crumbs (soft WHEAT flour "0", water, salt, brewer's yeast), balsamic vinegar, sunflower oil, salt, chili pepper, turmeric.

Pasta ingredients: durum WHEAT semolina, water, concentrated beet juice powder 1,5% (concentrated beet juice, maltodextrin and citric acid), dehydrated tomato 1%.

## ALLERGENS

Product Contains:

<b>Celery/Celeriac</b>	Yes
<b>Cereals Containing Gluten</b>	Yes
<b>Barley</b>	No
<b>Oats</b>	No
<b>Rye</b>	No
<b>Wheat (including Spelt and Khorasan)</b>	Yes
<b>Crustacea</b>	No
<b>Eggs</b>	May Contain
<b>Fish</b>	No
<b>Lupin</b>	No
<b>Milk</b>	No
<b>Molluscs</b>	No

<b>Mustard</b>	May Contain
<b>Nuts (Tree)</b>	No
<b>Almond nuts</b>	No
<b>Brazil nuts</b>	No
<b>Cashew nuts</b>	No
<b>Hazelnuts</b>	No
<b>Macadamia (Queensland) nuts</b>	No
<b>Pecan nuts</b>	No
<b>Pistachio nuts</b>	No
<b>Walnuts</b>	No
<b>Peanuts</b>	No
<b>Sesame Seeds</b>	No
<b>Soybeans</b>	May Contain
<b>Sulphur Dioxide and Sulphites</b>	No

Risk Source:

**Additional Allergen Information**

May contain: Eggs, Soy, Mustard.

SUPPLEMENTARY  
INGREDIENT  
INFORMATION

<b>Palm Oil</b>	No
<b>Hydrogenated Vegetable Oil/Fat</b>	No
<b>GM Protein/DNA</b>	No

## ADDITIVES

*Product Contains:*

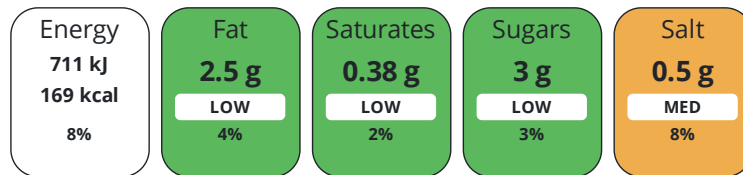
<b>Artificial Antioxidants</b>	No	<b>Artificial Flavourings</b>	No
<b>Artificial Colours</b>	No	<b>Artificial Preservatives</b>	No
<b>Artificial Flavour Enhancers</b>	No	<b>Artificial Sweeteners</b>	No

DIET  
SUITABILITY

<b>Vegan Diet</b>	Suitable for	<b>Vegetarian Diet</b>	Suitable for
<b>Halal Diet</b>	No	<b>Kosher Diet</b>	No

NUTRITIONAL  
INFORMATION

Each 100g/ml portion contains:



of your reference intake.

Typical values per 100g/ml : Energy 169kcal / 711kj

Nutrient	per 100g	RI per 100g	per 102g serving	RI per 102g serving
<b>Energy (kJ)</b>	711 kJ	8%	725.2 kJ	9%
<b>Energy (kcal)</b>	169 kcal	8%	172.4 kcal	9%
<b>Fat</b>	2.5 g	4%	2.6 g	4%
<b>of which Saturates</b>	0.38 g	2%	0.4 g	2%
<b>Carbohydrate</b>	28.3 g	11%	28.9 g	11%
<b>of which Sugars</b>	3 g	3%	3.1 g	3%
<b>Fibre</b>	4.5 g		4.6 g	
<b>Protein</b>	6 g	12%	6.1 g	12%
<b>Salt</b>	0.5 g	8%	0.5 g	8%
<b>Serving Size</b>	102 g			

SUPPLEMENTARY  
NUTRITIONAL  
INFORMATIONHANDLING &  
STORAGE  
INFORMATION**Directions For Use**

- Without defrosting add the pasta to a pasta cooker full of boiling salted water. - Once water returns to boil, cook pasta according to the recommended cooking time. Stir occasionally. - Drain the pasta; - Season to taste. For perfect pasta, always use one litre of boiling water for every 100g of pasta.

**Storage Instructions**

In the refrigerator: 1 day In the ice compartment: 3 days Ice compartment \* (-6°C): 1 week Ice compartment \*\* (-12°C): 1 month Ice compartment \*\*\* \*\*\*\* (-18°C): See date printed on the package Once defrosted the product must not be refrozen and must be consumed within 24 hours provided that it is kept in the refrigerator

<b>Shelf Life from Time of Production</b>	540 Days	<b>Exempt From Shelf Life Labelling</b>	No
---	----------	---	----

ACCREDITATIONS/  
CERTIFICATIONS/  
ASSURANCE  
SCHEMES  
ORIGIN

**BRCGS Certified**

**Product Country of Origin/Place of Provenance** Italy

PRODUCT  
CHARACTERISTICS

Standards Testing

**Do you undertake trend analysis of microbiological results?** No

**Is shelf life testing undertaken?** Yes

CONFIGURATION

Case Configuration

Inner Pack Configuration

**Total Quantity of Inner Components in Outer Case** 1 Units

**Is the Outer Case Splittable?** No

PRODUCT  
WEIGHTS

Inner Component

**Variable Weight Consumer Item** No

**Inner Component Weight** 3 kg

Outer Case

**Outer Case Gross Weight** 3.18 kg

**Outer Case Net Weight** 3 kg

PRODUCT  
DIMENSIONS

Inner Component

**Inner Component Depth** 540 mm

**Inner Component Width** 0 mm

**Inner Component Height** 430 mm

Outer Case

**Outer Case Depth** 290 mm

**Outer Case Width** 193 mm

**Outer Case Height** 170 mm

PALLET  
INFORMATION

**Quantity of Cases Per Pallet Layer** 20 Cases

**Pallet Height** 1.83 MTR

**Quantity of Layers Per Pallet** 8 Layers

**Quantity of Cases Per Pallet** 160 Cases

PACKAGING

Inner Component Packaging

Type	Materials	Weight	Recycled Plastic %	Recyclable	Returnable	Composite
Poly Treated PET/PE	Plastic	17 g	- %			

Outer Case Packaging

Type	Materials	Weight	Recycled Plastic %	Recyclable	Returnable	Composite
Case	Paper/Cardboard	167 g	- %			

Transport Packaging

Type	Materials	Weight	Recycled Plastic %	Recyclable	Returnable	Composite
Other	Plastic	17 g	- %			
Other	Paper/Cardboard	167 g	- %			

OTHER  
INFORMATION

**Manufacturer Comments**

Shelf life increase to 24 months from manufacture for product produced after 03/08/2020.

CONTACT  
INFORMATION

Address

Surgital S.p.A  
16/1 Via Bastia 48017  
Lavezzola (RA)  
Emilia Romagna  
48017  
Italy

P: (Phone) +447786515906

The information on the [Erudus System](#) has been supplied by the manufacturers of the products and, whilst the owners of the Erudus System take steps to ensure the information is regularly updated, they give no warranty and no guarantee that the information is accurate. Product information and ingredients may change, please always read product labels carefully in addition to using the information provided by Erudus.

We do not accept liability for any inaccuracies or incorrect information contained on this site.  
Please visit <http://www.erudus.com/terms-and-conditions> for full terms and conditions.