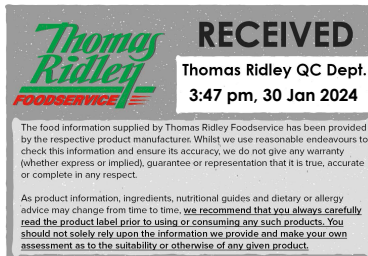


Changed Jan 30, 2024 13:46

Reviewed Jan 30, 2024 13:46

Erudus ID 22e2d70b89b84094a591855c53f5b55b

Version 2.0



Spiced Plum Chutney 2kg

Spiced Plum Chutney 1x2kg

PRODUCT DESCRIPTION

A chunky plum, apple and onion chutney.

Brand	Stokes Sauces
Manufacturer Product Code	CTRCSP281/0002
Product Type	Food
Product Category	Condiments
Storage Type	Ambient
Erudus ID	22e2d70b89b84094a591855c53f5b55b
Specification Type	Generic

Inner Component GTIN 5060092696425



INGREDIENTS

Ingredient Declaration

Plums (31%), Unrefined Raw Cane Sugar, Dark Muscovado Natural Unrefined Cane Sugar, Onions, Cider Vinegar, Apple (10%), Sultanas (2%), Cornflour, Ginger Puree, Garlic Puree, Sea Salt, Spices, Orange Zest, Yellow MUSTARD Seeds.

Ingredient Statements

Caution: Although every care has been taken to remove plum stones, some pieces may remain.

ALLERGENS

Product Contains:

Celery/Celeriac	No	Mustard	Yes
Cereals Containing Gluten	No	Nuts (Tree)	No
Barley	No	Almond nuts	No
Oats	No	Brazil nuts	No
Rye	No	Cashew nuts	No
Wheat (including Spelt and Khorasan)	No	Hazelnuts	No
Crustacea	No	Macadamia (Queensland) nuts	No
Eggs	No	Pecan nuts	No
Fish	No	Pistachio nuts	No
Lupin	No	Walnuts	No
Milk	No	Peanuts	No
Molluscs	No	Sesame Seeds	No
		Soybeans	No
		Sulphur Dioxide and Sulphites	No

FREE FROM CLAIMS

Gluten Free Yes

SUPPLEMENTARY INGREDIENT INFORMATION

Palm Oil	No
Hydrogenated Vegetable Oil/Fat	No
GM Protein/DNA	No

ADDITIVES

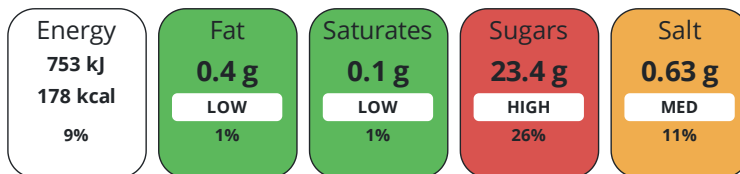
Product Contains:

Artificial Antioxidants	No	Artificial Flavourings	No
Artificial Colours	No	Artificial Preservatives	No
Artificial Flavour Enhancers	No	Artificial Sweeteners	No
Vegan Diet	Certified	Vegetarian Diet	Suitable for
Halal Diet	No	Kosher Diet	No

DIET SUITABILITY

NUTRITIONAL INFORMATION

Each 100g/ml portion contains:



of your reference intake.

Typical values per 100g/ml : Energy 178kcal / 753kj

Nutrient	per 100g	RI per 100g
Energy (kJ)	753 kJ	9%
Energy (kcal)	178 kcal	9%
Fat	0.4 g	1%
of which Saturates	0.1 g	1%
Carbohydrate	42.1 g	16%
of which Sugars	23.4 g	26%
Fibre	1.1 g	
Protein	0.8 g	2%
Salt	0.63 g	11%

SUPPLEMENTARY NUTRITIONAL INFORMATION

HFSS (HIGH IN FAT, SALT AND SUGAR) HANDLING & STORAGE INFORMATION

HFSS Status	Not Applicable (out of scope, exempt)
--------------------	---------------------------------------

Directions For Use

Ready to eat, use as a condiment.

Storage Instructions

Store in a cool dry place, away from direct sunlight. Once opened refrigerate and consume within 21 days and by the best before end date.

Storage Instructions After Opening

Once opened refrigerate and consume within 21 days and by the best before end date.

Shelf Life from Time of Production	324 Days	Exempt From Shelf Life Labelling	No
Shelf Life From Opening	21 Days		

ACCREDITATIONS/ CERTIFICATIONS/ ASSURANCE SCHEMES



ORIGIN

Product Country of Origin/Place of Provenance	United Kingdom
--	----------------

PRODUCT CHARACTERISTICS

Standards Testing

Do you undertake trend analysis of microbiological results? Yes

Is shelf life testing undertaken? Yes

Microbiological Standards

Organism	Description	Frequency	Target	Maximum	Sample (g or ml)
E. Coli (cfu/g or ml)		Annually	<10	10	20
Enterobacteriaceae (cfu/g or ml)		Annually	<20	100	20
Staphylococcus Aureus (cfu/g or ml)		Annually	<20	20	20
Salmonella (cfu/g or ml)	Target ND in 25g	Annually	=0	0	25
Yeast (cfu/g or ml)		Annually	<100	500	20
Moulds (cfu/g or ml)		Annually	<100	500	20

Analytical Standards

Test	Description	Frequency	Target	Range	Sample (g or ml)
Brix °Bx		Every Batch	=37	35 to 39	10
pH		Every Batch	=3.3	3.1 to 3.5	200

ORGANOLEPTICS

Appearance	Dark brown with pale brown chunks of plum, apple and onion, brown sultana pieces, yellow mustard seeds and dark brown specks
Aroma	Acidic notes and spices aroma
Taste	Sweet plum, apple and onion, orange and spiced afternotes
Texture	Thick, chunky pieces of plum, apple, onion and sultana surrounded by a set liquid

HAZARD CONTROLS

Metal Detection Yes

CONFIGURATION

Case Configuration Inner Pack Configuration

Total Quantity of Inner Components in Outer Case 1 Units

Is the Outer Case Splittable? No

PRODUCT WEIGHTS

Inner Component

Variable Weight Consumer Item No

Inner Component Weight 2 kg

e mark Yes

Outer Case

Outer Case Gross Weight 2.1 kg

Outer Case Net Weight 2 kg

PRODUCT DIMENSIONS

Inner Component

Inner Component Depth 201 mm

Inner Component Width 201 mm

Inner Component Height 103 mm

Outer Case

Outer Case Depth 0 mm

Outer Case Width 0 mm

Outer Case Height 0 mm

PALLET INFORMATION

Quantity of Cases Per Pallet Layer	32 Cases	Pallet Height	1 MTR
Quantity of Layers Per Pallet	8 Layers	Pallet Gross Weight	557.84 kg
Quantity of Cases Per Pallet	256 Cases		

PACKAGING

Inner Component Packaging

Type	Materials	Weight	Recycled Plastic %	Recyclable	Returnable	Composite
Tub	Plastic / PP (Polypropylene)	107 g	0 %	Yes	No	
Label	Paper/Cardboard / Paper	1.2 g	- %	No	No	

Transport Packaging

Type	Materials	Weight	Recycled Plastic %	Recyclable	Returnable	Composite
Pallet Wrap	Plastic / LDPE (Low Density Polyethylene)	235 g	30 %	Yes	No	No
Pallet	Wood	20000 g	- %	Yes	No	No

OTHER INFORMATION

Manufacturer Comments

Minimum order quantity is 1 layer of 32 buckets. This must be ordered as part of an MOQ of £1000 (mixed pallet deliveries).

CONTACT INFORMATION

Address

Stokes Sauces
 Rendlesham Hall
 Rendlesham
 Woodbridge
 Suffolk
 IP12 2RG
 England

P. (Phone) 01394 462150

The information on the [Erudus System](#) has been supplied by the manufacturers of the products and, whilst the owners of the Erudus System take steps to ensure the information is regularly updated, they give no warranty and no guarantee that the information is accurate. Product information and ingredients may change, please always read product labels carefully in addition to using the information provided by Erudus.

We do not accept liability for any inaccuracies or incorrect information contained on this site.
 Please visit <http://www.erudus.com/terms-and-conditions> for full terms and conditions.