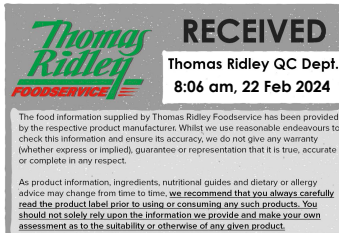


Changed Feb 21, 2024 11:50

Reviewed Feb 21, 2024 11:50

Erudus ID 745fe6df42d840679cfa8c59956226e4

Version 2.0



06695

Rich Sauces Vegan Mayonnaise 4.5L

Rich Sauces Vegan Mayonnaise 1x4.5litre

PRODUCT DESCRIPTION

All the quality of a luxury Mayonnaise

Brand	Rich Sauces
Manufacturer Product Code	RSVEGMAY4.5
Product Type	Food
Product Category	Vegan Mayonnaise and Condiments
Storage Type	Ambient
Erudus ID	745fe6df42d840679cfa8c59956226e4
Specification Type	Alternatives (Vegetarian and Vegan)
Inner Component GTIN	5060051294235
Outer Case GTIN	5060051294235



INGREDIENTS

Ingredient Declaration

Rapeseed Oil (70%), Water, Sugar, Spirit Vinegar, Salt, Modified Waxy Maize Starch, Stabiliser: Xanthan Gum. Flavouring, Colour: Carotene. Antioxidant: Calcium Disodium (EDTA).

ALLERGENS

Product Contains:

Celery/Celeriac	No	Mustard	No
Cereals Containing Gluten	No	Nuts (Tree)	No
Barley	No	Almond nuts	No
Oats	No	Brazil nuts	No
Rye	No	Cashew nuts	No
Wheat (including Spelt and Khorasan)	No	Hazelnuts	No
Crustacea	No	Macadamia (Queensland) nuts	No
Eggs	No	Pecan nuts	No
Fish	No	Pistachio nuts	No
Lupin	No	Walnuts	No
Milk	No	Peanuts	No
Molluscs	No	Sesame Seeds	No
		Soybeans	No
		Sulphur Dioxide and Sulphites	No

SUPPLEMENTARY INGREDIENT INFORMATION

Palm Oil	No
Hydrogenated Vegetable Oil/Fat	No
GM Protein/DNA	No

ADDITIVES

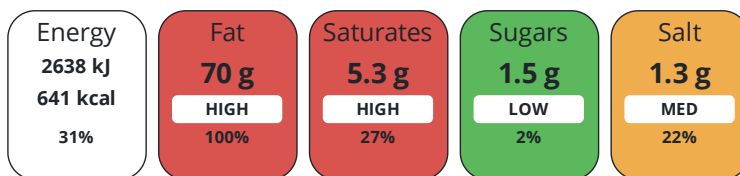
Product Contains:

Artificial Antioxidants	Yes	Artificial Flavourings	No
Artificial Colours	No	Artificial Preservatives	Yes
Artificial Flavour Enhancers	No	Artificial Sweeteners	No
Vegan Diet	Suitable for	Vegetarian Diet	Suitable for
Halal Diet	No	Kosher Diet	No

DIET SUITABILITY

NUTRITIONAL INFORMATION

Each 100g/ml portion contains:



of your reference intake.

Typical values per 100g/ml : Energy 641kcal / 2638kj

Nutrient	per 100g	RI per 100g	per 30g serving	RI per 30g serving
Energy (kJ)	2638 kJ	31%	791.4 kJ	9%
Energy (kcal)	641 kcal	32%	192.3 kcal	10%
Fat	70 g	100%	21 g	30%
of which Saturates	5.3 g	27%	1.6 g	8%
Carbohydrate	2.5 g	1%	0.8 g	0%
of which Sugars	1.5 g	2%	0.5 g	1%
Fibre	0.2 g		0.1 g	
Protein	< 0.5 g	1%	0.2 g	0%
Salt	1.3 g	22%	0.4 g	7%

Serving Size 30 g

SUPPLEMENTARY NUTRITIONAL INFORMATION

HANDLING & STORAGE INFORMATION

Directions For Use

Ready to Eat.

Storage Instructions

Ambient product, refrigerate once opened, use within 6 weeks and within best before date.

Storage Instructions After Opening

Ambient product, refrigerate once opened, use within 6 weeks and within best before date.

Shelf Life from Time of Production	150 Days	Exempt From Shelf Life Labelling	No
---	----------	---	----

ACCREDITATIONS/ CERTIFICATIONS/ ASSURANCE SCHEMES



ORIGIN

Product Country of Origin/Place of United Kingdom

Provenance

Additional Origin Details

NI

PRODUCT CHARACTERISTICS

Standards Testing

	Do you undertake trend analysis of microbiological results?	Yes	Is shelf life testing undertaken?	Yes			
	Microbiological Standards						
	Organism	Description	Frequency	Target	Maximum	Sample (g or ml)	
	Enterobacteriaceae (cfu/g or ml)		Occasionally	<100	1000	25	
	Salmonella (cfu/g or ml)		Occasionally	<100	1000	25	
	Yeast (cfu/g or ml)		Occasionally	<100	1000	25	
	Moulds (cfu/g or ml)		Occasionally	<100	1000	25	
	Aerobic Colony Count (ACC) (cfu/g or ml)		Occasionally	<1000	100000	25	
	Analytical Standards						
	Test	Description	Frequency	Target	Range	Sample (g or ml)	
	pH		Every Batch	=3.15	2.8 to 3.45	100	
CONFIGURATION	Case Configuration		Inner Pack Configuration				
	Variable Inner Components in Outer Case	No					
	Total Quantity of Inner Components in Outer Case	1 Units					
	Is the Outer Case Splittable?	No					
PRODUCT WEIGHTS	Inner Component						
	Variable Weight Consumer Item	No					
	Inner Component Volume	4.5 litre					
	Outer Case						
	Outer Case Gross Weight	4.45 kg					
	Outer Case Net Weight	4.23 kg					
PRODUCT DIMENSIONS	Inner Component						
	Inner Component Depth	225 mm					
	Inner Component Width	225 mm					
	Inner Component Height	183 mm					
	Inner Component Diameter	225 mm					
	Outer Case						
	Outer Case Depth	225 mm					
	Outer Case Width	225 mm					
	Outer Case Height	183 mm					
PALLET INFORMATION	Quantity of Cases Per Pallet Layer	23 Cases	Pallet Height	1.48 MTR			
	Quantity of Layers Per Pallet	8 Layers	Pallet Gross Weight	836.8 kg			
	Quantity of Cases Per Pallet	184 Cases					
PACKAGING	Inner Component Packaging						
	Type	Materials	Weight	Recycled Plastic %	Recyclable	Returnable	Composite
	Poly Treated PET/PE	Plastic	200 g	- %			
	Poly Treated PET/PE	Paper/Cardboard	20 g	- %			

Transport Packaging

Type	Materials	Weight	Recycled Plastic %	Recyclable	Returnable	Composite
Other	Plastic	100 g	- %			

OTHER
INFORMATION
CONTACT
INFORMATION

Address

Rich Sauces
34 Jubilee Road
Newtownards
Down
BT23 6YH
England

P: (Phone) 02891819004

The information on the [Erudus System](#) has been supplied by the manufacturers of the products and, whilst the owners of the Erudus System take steps to ensure the information is regularly updated, they give no warranty and no guarantee that the information is accurate. Product information and ingredients may change, please always read product labels carefully in addition to using the information provided by Erudus.

We do not accept liability for any inaccuracies or incorrect information contained on this site.
Please visit <http://www.erudus.com/terms-and-conditions> for full terms and conditions.