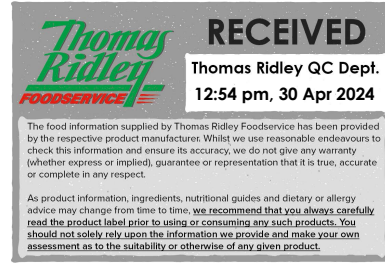


Changed Apr 30, 2024 10:15  
Reviewed Apr 30, 2024 10:15  
Erudus ID f4e6a8edf5a14d969d63c047934d396f  
Version 2.0



07006

# RITZ 200G ORIG 8CA

Ritz 200g Orig 8x200g

## PRODUCT DESCRIPTION

Savoury crackers.

Brand	Cadbury UK Limited
Manufacturer Product Code	4058480
Product Type	Food
Product Category	Party Food
Storage Type	Ambient
Erudus ID	f4e6a8edf5a14d969d63c047934d396f
Specification Type	Generic
Inner Component GTIN	05000137487908
Outer Case GTIN	05000137000015



## INGREDIENTS

### Ingredient Declaration

WHEAT flour, palm oil, sugar, glucose-fructose syrup, raising agents (calcium phosphates, ammonium carbonates, sodium carbonates, potassium carbonates), salt, BARLEY malt flour.

## ALLERGENS

Product Contains:

<b>Celery/Celeriac</b>	No
<b>Cereals Containing Gluten</b>	Yes
<b>Barley</b>	Yes
<b>Oats</b>	No
<b>Rye</b>	No
<b>Wheat (including Spelt and Khorasan)</b>	Yes
<b>Crustacea</b>	No
<b>Eggs</b>	May Contain
<b>Fish</b>	No
<b>Lupin</b>	No
<b>Milk</b>	May Contain
<b>Molluscs</b>	No
<b>Mustard</b>	No
<b>Nuts (Tree)</b>	No
<b>Almond nuts</b>	No
<b>Brazil nuts</b>	No
<b>Cashew nuts</b>	No
<b>Hazelnuts</b>	No
<b>Macadamia (Queensland) nuts</b>	No
<b>Pecan nuts</b>	No
<b>Pistachio nuts</b>	No
<b>Walnuts</b>	No
<b>Peanuts</b>	No
<b>Sesame Seeds</b>	No
<b>Soybeans</b>	No
<b>Sulphur Dioxide and Sulphites</b>	No

Risk Source:

#### Additional Allergen Information

MAY CONTAIN EGG, MILK.

FREE FROM CLAIMS

<b>Free From Celery/Celeriac</b>	Yes
<b>Free From Crustacea</b>	Yes
<b>Free From Fish</b>	Yes
<b>Free From Lupin</b>	Yes
<b>Free From Molluscs</b>	Yes
<b>Free From Mustard</b>	Yes
<b>Free From Nuts</b>	Yes
<b>Free From Oats</b>	Yes
<b>Free From Peanuts</b>	Yes
<b>Free From Rye</b>	Yes
<b>Free From Sesame</b>	Yes
<b>Free From Soybeans</b>	Yes
<b>Free From Sulphur Dioxide</b>	Yes

#### SUPPLEMENTARY INGREDIENT INFORMATION

<b>Palm Oil</b>	Yes
<b>GM Protein/DNA</b>	No

ADDITIVES

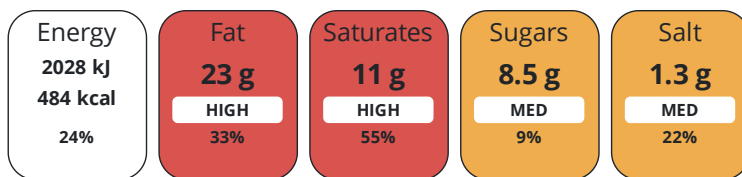
Product Contains:

## DIET SUITABILITY

<b>Vegan Diet</b>	No	<b>Vegetarian Diet</b>	Suitable for
<b>Halal Diet</b>	No	<b>Kosher Diet</b>	No

## NUTRITIONAL INFORMATION

Each 100g/ml portion contains:



of your reference intake.

Typical values per 100g/ml : Energy 484kcal / 2028kj

Nutrient	per 100g	RI per 100g
Energy (kJ)	2028 kJ	24%
Energy (kcal)	484 kcal	24%
Fat	23 g	33%
of which Saturates	11 g	55%
Carbohydrate	60 g	23%
of which Sugars	8.5 g	9%
Fibre	3.3 g	
Protein	7.7 g	15%
Salt	1.3 g	22%

<b>Serving Size Description</b>	1 serving 30g. 6-7 servings per pack.
<b>Number of Servings</b>	6 Servings

## SUPPLEMENTARY NUTRITIONAL INFORMATION

## HANDLING &amp; STORAGE INFORMATION

**Directions For Use**

Ready To Eat

**Storage Instructions**

STORE IN A COOL, DRY PLACE.

<b>Shelf Life from Time of Production</b>	335 Days
<b>Exempt From Shelf Life Labelling</b>	No

## ORIGIN

<b>Product Country of Origin/Place of Provenance</b>	United Kingdom
--	----------------

## PRODUCT CHARACTERISTICS

Standards Testing

## CONFIGURATION

Case Configuration

<b>Total Quantity of Inner Components in Outer Case</b>	8 Units
Inner Pack Configuration	

PRODUCT WEIGHTS

Inner Component

<b>Variable Weight Consumer Item</b>	No
<b>Inner Component Weight</b>	200 g
Outer Case	
<b>Outer Case Gross Weight</b>	1.98 kg
<b>Outer Case Net Weight</b>	1.6 kg

PRODUCT DIMENSIONS

Inner Component

<b>Inner Component Depth</b>	56 mm
<b>Inner Component Width</b>	135 mm
<b>Inner Component Height</b>	164 mm

Outer Case

<b>Outer Case Depth</b>	286 mm
<b>Outer Case Width</b>	240 mm
<b>Outer Case Height</b>	172 mm

PALLET INFORMATION

<b>Quantity of Cases Per Pallet Layer</b>	16 Cases
<b>Quantity of Layers Per Pallet</b>	6 Layers
<b>Quantity of Cases Per Pallet</b>	96 Cases
<b>Pallet Height</b>	1.19 MTR
<b>Pallet Gross Weight</b>	191.9 kg

PACKAGING

Inner Component Packaging

Type	Materials	Weight	Recycled Plastic %	Recyclable	Returnable	Composite
Box	Plastic	28.8 g	- %			
Box	Paper/Cardboard	245.6 g	- %			

Outer Case Packaging

Type	Materials	Weight	Recycled Plastic %	Recyclable	Returnable	Composite
Case	Paper/Cardboard	105.6 g	- %			

OTHER INFORMATION

## CONTACT INFORMATION

### Address

Cadbury UK Limited  
PO Box 12  
Bournville Lane  
Bournville  
Birmingham  
B30 2LU  
England

P: (Phone) +44 1214 582 000

### Technical Contact

Tomas Sakalik  
Publication Expert  
tomas.sakalik@mdlz.com

The information on the [Erudus System](#) has been supplied by the manufacturers of the products and, whilst the owners of the Erudus System take steps to ensure the information is regularly updated, they give no warranty and no guarantee that the information is accurate. Product information and ingredients may change, please always read product labels carefully in addition to using the information provided by Erudus.

We do not accept liability for any inaccuracies or incorrect information contained on this site.  
Please visit <http://www.erudus.com/terms-and-conditions> for full terms and conditions.