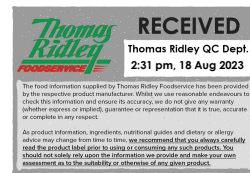


Supplier's Product Code : 4920  
 Product Added : 12 June 2014  
 Last Updated by Supplier : 28 July 2021  
 erudus id : 7dd8971534b84a5a831d8e830440610d



The information on the Erudus System has been supplied by the manufacturers of the products and, whilst the owners of the Erudus System take steps to ensure the information is regularly updated, they give no warranty and no guarantee that the information is accurate. Product information and ingredients may change, please always read product labels carefully in addition to using the information provided by Erudus One.

We do not accept liability for any inaccuracies or incorrect information contained on this site. Please visit <http://www.erudus.com/terms-and-conditions> for full terms and conditions.

## Santa Maria Flour Tortillas 6" Frozen

Short Product Name:  
Flour Tortilla

Product Description:  
Santa Maria Flour Tortillas 6" 10 x 15 (420g) Frozen in blue plastic PP film

### General Information

Food/Drink :	Food
Product Category :	Frozen
Generic Product Type :	Bread

**Supplier's Product Code :**  
4920

**Supplier:** Santa Maria UK

Nimbus House  
Maidstone Road  
Milton Keynes  
Buckinghamshire  
MK10 0BD  
England  
P: 01908 933000

## OUTER PRODUCT

### Outer case Information

Outer Case GTIN :	17311310049208	Outer Case Length :	360 mm
Packaging Type Description :	Case	Outer Case Width :	185 mm
Total Quantity of Inner Units in Outer Case :	10 Units	Outer Case Height :	175 mm
Is Trade Item Splittable? :	No	Product Gross Weight :	4.39 kg
		Product Net Weight :	4.20 kg

### Pallet Information

Quantity of Cases Per Pallet Layer :	15 Cases	Pallet Height :	1.60 MTR
Quantity of Layers Per Pallet :	9 Layers	Pallet Gross Weight :	245.80 kg
Quantity of Cases Per Pallet :	135 Cases		

### Logistical Information

Shelf Life from Time of Production :	720 Days	Minimum Order Quantity :	1 Cases
Guaranteed Shelf Life on Delivery :	540 Days	Delivery Lead Time :	4 Days

### Waste Packaging Weight - Outer Case

Glass :	0.00 g	Aluminium :	0.00 g
Plastic :	0.00 g	Steel :	0.00 g
Percentage Recycled Plastic :	Not specified.	Other :	0.00 g
Paper/Board :	184.00 g		

### Waste Packaging Weight - Transport Packaging

Plastic :	295.00 g	Wood Total :	Not specified.
Paper/Board :	Not specified.	Is Pallet Returnable? :	Yes
Percentage Recycled Plastic :	Not specified.		

### Other Information

**Supplier Comments:**  
For Minimum Order Quantity please refer to account manager

## INNER PRODUCT

### Origin Information

Product Country of Origin/Place of Provenance :	United Kingdom
---	----------------

**Additional Origin Details :**  
UK

### Inner Pack Information

Internal GTIN :	Not specified.
-----------------	----------------

Packaging Type Description :	Polypropylene Film
------------------------------	--------------------

Variable Weight Consumer Item :	No
---------------------------------	----

Net Drained Weight :	Not specified.
----------------------	----------------

Inner Unit Length :	255 mm
---------------------	--------

Inner Unit Height :	25 mm
---------------------	-------

Inner Unit Width :	186 mm
--------------------	--------

Inner Product Weight :	Not specified.
------------------------	----------------

Inner Product Weight Units :	g
------------------------------	---

**Weight/Volume :**  
420g

### Handling Information

#### Directions For Use :

Defrosting:  
Remove packs from case & stack no more than 2 high in a refrigerator.  
Before use, bring to ambient temperature (15-25°C) for 1 hour.  
Before opening, flex each pack back & forth to aid tortilla separation.  
Do not re-freeze.  
Once opened cover or reseal in film or foil, refrigerate & consume within 7 days, 24 hours ambient.

#### Storage Instructions :

Keep frozen. Standard frozen (-18°C).  
Once opened cover or reseal in film or foil, refrigerate & consume within 7 days, 24 hours ambient.

## Dietary Information

### Ingredients :

**WHEAT** flour (66%) (**WHEAT** flour, calcium carbonate, iron, niacin, thiamin), water, rapeseed oil, **WHEAT** fibre, raising agents (E500, E450) salt, acidity regulator (E296), dextrose, **WHEAT** gluten, preservative (E282).

### Product contains:

GM Protein/DNA :	No
Celery/Celeriac (and products thereof) :	No
Lupin (and products thereof) :	No
Eggs (and products thereof) :	No
Fish (and products thereof) :	No
Soybeans (and products thereof) :	No
Milk (and products thereof) :	No
Mustard (and products thereof) :	No
Peanuts (and products thereof) :	No
Sesame Seeds (and products thereof) :	No
Crustacea (and products thereof) :	No
Molluscs (and products thereof) :	No
Nuts (and products thereof) :	No
Almond nuts :	No
Hazelnuts :	No
Walnuts :	No
Cashew nuts :	No
Pecan nuts :	No
Brazil nuts :	No
Pistachio nuts :	No
Macadamia nuts :	No
Queensland nuts :	No
Cereals Containing Gluten :	Yes
Wheat (and products thereof) :	Yes
Rye (and products thereof) :	No
Barley (and products thereof) :	No
Oats (and products thereof) :	No
Spelt (and products thereof) :	No
Kamut (and products thereof) :	No
Gluten content <20ppm :	No
Hydrogenated Vegetable Oil/Fat :	No
Palm Oil :	No
Sulphur Dioxide and Sulphites :	No
Sulphur Dioxide/Sulphites Concentration :	0

### Product contains :

Artificial Antioxidants :	No
Artificial Colours :	No
Artificial Flavourings :	No
Artificial Flavour Enhancers :	No
Artificial Preservatives :	Yes
Artificial Sweeteners :	No

### Product suitability:

Suitable for a Vegetarian Diet :	Yes
Suitable for a Vegan Diet :	Yes
Suitable for Sufferers of Lactose Intolerance :	Yes
Suitable for Coeliacs :	No
Approved for a Halal Diet :	Yes
Approved for a Kosher Diet :	No
HFSS (High in Fat, Salt and Sugar) :	-

### Allergen Statement :

Not specified.

## Nutritional Information

Average Serving :	28.00 g or ml
Count per 100g :	3.57 Pieces
Count Per Pack :	Not specified.
Energy per 100 G/ML :	1,257.00 kJ
Energy per 100 G/ML :	298.00 kcal
Fat per 100 G/ML :	5.5 g
- of which Saturates per 100 G/ML :	0.7 g
- of which Mono-unsaturates per 100 G/ML :	2.6 g
- of which Polyunsaturates per 100 G/ML :	1.3 g
Trans Fats per 100 G\ML :	0.00 g
Carbohydrate Per 100 G/ML :	53 g
- of which Sugars per 100 G/ML :	3 g
- of which Polyols per 100 G/ML :	Not specified.
- of which Starch per 100 G/ML :	0.40 g
Fibre per 100 G/ML :	4 g
Protein per 100 G/ML :	6.9 g
Salt per 100 G/ML :	1.5 g
Sodium per 100 G\ML :	0.62 g

Vitamin A per 100g :	Not specified.
Vitamin C per 100g :	Not specified.
Folate/Folic Acid per 100g :	Not specified.
Calcium per 100g :	Not specified.
Iron per 100g :	Not specified.
Zinc per 100g :	Not specified.
Cholesterol per 100 G/ML (UK/FR) :	Not specified.
Non Milk Extrinsic Sugars per 100gm :	Not specified.
Alcoholic Strength %Vol :	Not specified.
Fat Percentage in Dry Matter per 100g :	Not specified.

## Waste Packaging Weight - Inner Unit

Glass :	0.00 g
Plastic :	3.00 g
Percentage Recycled Plastic :	Not specified.
Paper/Board :	0.00 g

Aluminium :	0.00 g
Steel :	0.00 g
Other :	0.00 g

## Accreditations / Certifications / Assurance Schemes

BRCGS Certified Production :	Yes
Red Tractor :	No
Fairtrade :	No
Marine Stewardship Council Certified (MSC) :	No
Organic :	No
SALSA (Safe & Local Supplier Approval) :	No
British Lion Mark :	No
RSPCA Assured :	No
LEAF Marque (Linking Environment and Farming) :	No
Rainforest Alliance :	No
Food for Life Supplier Scheme :	No
Quality Meat Scotland :	No
Farm Assured Welsh Livestock :	No
Northern Ireland Beef & Lamb Farm Quality Assurance Scheme :	No
Quality Standard Mark (Beef/Lamb) :	No
Roundtable of Sustainable Palm Oil (RSPO) :	Yes
School Approved (The Requirement for School Food Regulation 2014) :	Yes
IFS Food Standard :	No
Best Aquaculture Practices (BAP) Certification :	No
ISO 14001 (Environmental System) :	No
FSSC 22000 :	No

<b>Other Accreditation :</b>	
Halal Certification Authority	
Intra Stat/Taric Code :	1905908000
Commodity Code :	1905908000
Identification/Health Marks :	N/A

## Standards Testing

Do you undertake trend analysis of microbiological results? : No

Is shelf life testing undertaken? : No

## Microbiological Standards

Organism	Frequency	Target	Maximum	Sample (g or ml)	Note
E. Coli (cfu/g or ml)	Quarterly	<10	10	-	Start of life only when Enteros detected
Enterobacteriaceae (cfu/g or ml)	Quarterly	<10	10	-	Start of Life
Moulds (cfu/g or ml)	Quarterly	<100	100	-	Start of Life
Salmonella	Quarterly	=0	0	-	Start of Life
Staphylococcus Aureus (cfu/g or ml)	Quarterly	<50	50	-	Start of Life
Yeast (cfu/g or ml)	Quarterly	<100	100	-	Start of Life

## Analytical Standards

Not available.