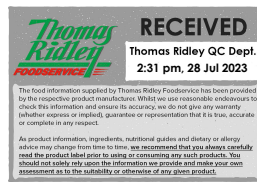


Supplier's Product Code : 32564
 Product Added : 30 June 2021
 Last Updated by Supplier : 14 January 2022
 erudus id : bcd2b4d59b434389815e46d01a923856



The information on the Erudus System has been supplied by the manufacturers of the products and, whilst the owners of the Erudus System take steps to ensure the information is regularly updated, they give no warranty and no guarantee that the information is accurate. Product information and ingredients may change, please always read product labels carefully in addition to using the information provided by Erudus One.

We do not accept liability for any inaccuracies or incorrect information contained on this site. Please visit <http://www.erudus.com/terms-and-conditions> for full terms and conditions.

McVitie's Dark Chocolate Digestive 12x266g

Short Product Name:
Dark Chocolate Digestive

Product Description:
Wheatmeal Biscuits covered in Dark Chocolate.

General Information

| | |
|------------------------|-------------------|
| Food/Drink : | Food |
| Product Category : | Ambient |
| Generic Product Type : | Biscuits & Wafers |

Supplier's Product Code :
32564
Supplier: United Biscuits
 pladis, Building 3, Chiswick Park
 566 Chiswick High Road
 Chiswick
 London
 W4 5YA
 England
 P: ..

OUTER PRODUCT

Outer case Information

| | | | |
|---|---------------|------------------------|---------|
| Outer Case GTIN : | 5000168194110 | Outer Case Length : | 278 mm |
| Packaging Type Description : | Case | Outer Case Width : | 161 mm |
| Total Quantity of Inner Units in Outer Case : | 12 Units | Outer Case Height : | 214 mm |
| Is Trade Item Splittable? : | No | Product Gross Weight : | 3.60 kg |
| | | Product Net Weight : | 3.22 kg |

Pallet Information

| | | | |
|--------------------------------------|-----------|-----------------------|-----------|
| Quantity of Cases Per Pallet Layer : | 24 Cases | Pallet Height : | 1.23 MTR |
| Quantity of Layers Per Pallet : | 5 Layers | Pallet Gross Weight : | 462.00 kg |
| Quantity of Cases Per Pallet : | 120 Cases | | |

Logistical Information

| | | | |
|--------------------------------------|----------|--------------------------|----------------|
| Shelf Life from Time of Production : | 252 Days | Minimum Order Quantity : | Not specified. |
| Guaranteed Shelf Life on Delivery : | 168 Days | Delivery Lead Time : | Not specified. |

Waste Packaging Weight - Outer Case

| | | | |
|-------------------------------|----------------|-------------|--------|
| Glass : | 0.00 g | Aluminium : | 0.00 g |
| Plastic : | 27.84 g | Steel : | 0.00 g |
| Percentage Recycled Plastic : | Not specified. | Other : | 0.00 g |
| Paper/Board : | 133.00 g | | |

Waste Packaging Weight - Transport Packaging

| | | | |
|-------------------------------|----------------|-------------------------|----------------|
| Plastic : | Not specified. | Wood Total : | Not specified. |
| Paper/Board : | Not specified. | Is Pallet Returnable? : | - |
| Percentage Recycled Plastic : | Not specified. | | |

Other Information

| | |
|----------------------------|----------------|
| Supplier Comments : | Not specified. |
|----------------------------|----------------|

INNER PRODUCT

Origin Information

Product Country of Origin/Place of Provenance : United Kingdom

Additional Origin Details :
Not specified.

Inner Pack Information

Internal GTIN : 5000168194127

Packaging Type Description : Polypropylene Film

Variable Weight Consumer Item : No

Net Drained Weight : Not specified.

Inner Unit Length : 68 mm

Inner Unit Height : 68 mm

Inner Unit Width : 145 mm

Inner Product Weight : Not specified.

Inner Product Weight Units : g

Weight/Volume :
266 g

Handling Information

Directions For Use :
Ready to eat

Storage Instructions :
Store in a cool, dry place. Once opened store in an airtight container.

Dietary Information

Ingredients :

Flour (39%) (WHEAT Flour, Calcium, Iron, Niacin, Thiamin), Plain Chocolate (30%) [Sugar, Cocoa Mass, Vegetable Fats (Palm, Shea), Butter Oil (MILK), Cocoa Butter, Emulsifiers (SOYA Lecithin, E476), Natural Flavouring], Vegetable Oil (Palm), Wholemeal WHEAT Flour (9%), Sugar, Glucose-Fructose Syrup, Raising Agents (Sodium Bicarbonate, Malic Acid, Ammonium Bicarbonate), Salt.

Product contains:

| | |
|---|------------------------------------|
| GM Protein/DNA : | No |
| Celery/Celeriac (and products thereof) : | No |
| Lupin (and products thereof) : | No |
| Eggs (and products thereof) : | No |
| Fish (and products thereof) : | No |
| Soybeans (and products thereof) : | Yes |
| Milk (and products thereof) : | Yes |
| Mustard (and products thereof) : | No |
| Peanuts (and products thereof) : | No |
| Sesame Seeds (and products thereof) : | No |
| Crustacea (and products thereof) : | No |
| Molluscs (and products thereof) : | No |
| Nuts (and products thereof) : | No |
| Almond nuts : | No |
| Hazelnuts : | No |
| Walnuts : | No |
| Cashew nuts : | No |
| Pecan nuts : | No |
| Brazil nuts : | No |
| Pistachio nuts : | No |
| Macadamia nuts : | No |
| Queensland nuts : | No |
| Cereals Containing Gluten : | Yes |
| Wheat (and products thereof) : | Yes |
| Rye (and products thereof) : | May Contain |
| Barley (and products thereof) : | May Contain |
| Oats (and products thereof) : | May Contain |
| Spelt (and products thereof) : | No |
| Kamut (and products thereof) : | No |
| Gluten content <20ppm : | No |
| Hydrogenated Vegetable Oil/Fat : | No |
| Palm Oil : | Yes |
| Sulphur Dioxide and Sulphites : | Below 10mg per kg/litre (not 0 mg) |
| Sulphur Dioxide/Sulphites Concentration : | <= - |

Product contains :

| | |
|--------------------------------|----|
| Artificial Antioxidants : | - |
| Artificial Colours : | No |
| Artificial Flavourings : | No |
| Artificial Flavour Enhancers : | - |
| Artificial Preservatives : | - |
| Artificial Sweeteners : | - |

Product suitability:

| | |
|---|-----|
| Suitable for a Vegetarian Diet : | Yes |
| Suitable for a Vegan Diet : | No |
| Suitable for Sufferers of Lactose Intolerance : | No |
| Suitable for Coeliacs : | No |
| Approved for a Halal Diet : | No |
| Approved for a Kosher Diet : | No |
| HFSS (High in Fat, Salt and Sugar) : | - |

Allergen Statement :

Contains: Milk, Soya, Gluten.

Nutritional Information

| | |
|--|----------------|
| Average Serving : | 16.70 g or ml |
| Count per 100g : | Not specified. |
| Count Per Pack : | Not specified. |
| Energy per 100 G/ML : | 2,077.00 kJ |
| Energy per 100 G/ML : | 496.00 kcal |
| Fat per 100 G/ML : | 24.3 g |
| - of which Saturates per 100 G/ML : | 12.9 g |
| - of which Mono-unsaturates per 100 G/ML : | Not specified. |
| - of which Polyunsaturates per 100 G/ML : | Not specified. |
| Trans Fats per 100 G\ML : | Not specified. |
| Carbohydrate Per 100 G/ML : | 61.1 g |
| - of which Sugars per 100 G/ML : | 26.6 g |
| - of which Polyols per 100 G/ML : | Not specified. |
| - of which Starch per 100 G/ML : | Not specified. |
| Fibre per 100 G/ML : | 4.3 g |
| Protein per 100 G/ML : | 6 g |
| Salt per 100 G/ML : | 0.83 g |
| Sodium per 100 G\ML : | Not specified. |

| | |
|---|----------------|
| Vitamin A per 100g : | Not specified. |
| Vitamin C per 100g : | Not specified. |
| Folate/Folic Acid per 100g : | Not specified. |
| Calcium per 100g : | Not specified. |
| Iron per 100g : | Not specified. |
| Zinc per 100g : | Not specified. |
| Cholesterol per 100 G/ML (UK/FR) : | Not specified. |
| Non Milk Extrinsic Sugars per 100gm : | Not specified. |
| Alcoholic Strength %Vol : | Not specified. |
| Fat Percentage in Dry Matter per 100g : | Not specified. |

Waste Packaging Weight - Inner Unit

| | |
|-------------------------------|----------------|
| Glass : | 0.00 g |
| Plastic : | 2.32 g |
| Percentage Recycled Plastic : | Not specified. |
| Paper/Board : | 0.00 g |

| | |
|-------------|--------|
| Aluminium : | 0.00 g |
| Steel : | 0.00 g |
| Other : | 0.00 g |

Accreditations / Certifications / Assurance Schemes

| | |
|---|-----|
| BRCGS Certified Production : | Yes |
| Red Tractor : | No |
| Fairtrade : | No |
| Marine Stewardship Council Certified (MSC) : | No |
| Organic : | No |
| SALSA (Safe & Local Supplier Approval) : | No |
| British Lion Mark : | No |
| RSPCA Assured : | No |
| LEAF Marque (Linking Environment and Farming) : | No |
| Rainforest Alliance : | No |
| Food for Life Supplier Scheme : | No |
| Quality Meat Scotland : | No |
| Farm Assured Welsh Livestock : | No |
| Northern Ireland Beef & Lamb Farm Quality Assurance Scheme : | No |
| Quality Standard Mark (Beef/Lamb) : | No |
| Roundtable of Sustainable Palm Oil (RSPO) : | Yes |
| School Approved (The Requirement for School Food Regulation 2014) : | No |
| IFS Food Standard : | No |
| Best Aquaculture Practices (BAP) Certification : | No |
| ISO 14001 (Environmental System) : | No |
| FSSC 22000 : | No |

| | |
|-------------------------------|----------------|
| Other Accreditation : | Not specified. |
| Intra Stat/Taric Code : | Not specified. |
| Commodity Code : | Not specified. |
| Identification/Health Marks : | Not specified. |

Standards Testing

Do you undertake trend analysis of
microbiological results? : No

Is shelf life testing undertaken? : No

Microbiological Standards

Not available.

Analytical Standards

Not available.