

Changed Apr 11, 2024 13:21

Reviewed Apr 11, 2024 13:21

Erudus ID 438e9e2d73c84b0682035d488acfd5

Version 2.0

07062

Blue Horizon Elite SL BL Cod Loins 165-220g (1.65Kg)

Cod Loin 165-220g

PRODUCT DESCRIPTION

Skinless Boneless Cod Loins which have been individually quick frozen, no welded fillets permitted.

Loins shall have a protective water glaze applied of 10% (+/-2%)

Brand	Smales Fish Merchants Ltd
Manufacturer Product Code	107990
Product Type	Food
Product Category	Fish - Portioned
Storage Type	Frozen
Erudus ID	438e9e2d73c84b0682035d488acfd5
Specification Type	Fish and Seafood
Outer Case GTIN	5024113001056



INGREDIENTS

Ingredient Declaration

Cod 90% (Gadus morhua) (FISH), Water 10% (protective glaze)

ALLERGENS

Product Contains:

Celery/Celeriac	No
Cereals Containing Gluten	No
Barley	No
Oats	No
Rye	No
Wheat (including Spelt and Khorasan)	No
Crustacea	No
Eggs	No
Fish	Yes
Lupin	No
Milk	No
Molluscs	No

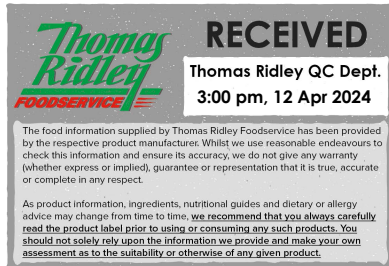
Mustard	No
Nuts (Tree)	No
Almond nuts	No
Brazil nuts	No
Cashew nuts	No
Hazelnuts	No
Macadamia (Queensland) nuts	No
Pecan nuts	No
Pistachio nuts	No
Walnuts	No
Peanuts	No
Sesame Seeds	No
Soybeans	No
Sulphur Dioxide and Sulphites	No

Additional Allergen Information

Contains: FISH

SUPPLEMENTARY INGREDIENT INFORMATION

Palm Oil	No
Hydrogenated Vegetable Oil/Fat	No
GM Protein/DNA	No



ADDITIVES

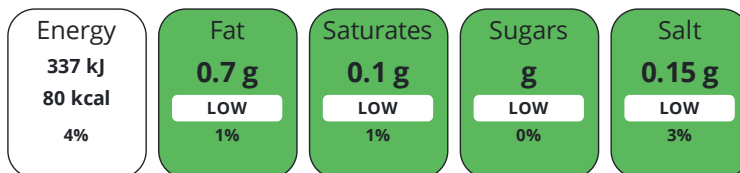
Product Contains:

Artificial Antioxidants	No	Artificial Flavourings	No
Artificial Colours	No	Artificial Preservatives	No
Artificial Flavour Enhancers	No	Artificial Sweeteners	No
Halal Diet	No	Kosher Diet	No

DIET SUITABILITY

NUTRITIONAL INFORMATION

Each 100g/ml portion contains:



of your reference intake.

Typical values per 100g/ml : Energy 80kcal / 337kj

Nutrient	per 100g	RI per 100g
Energy (kJ)	337 kJ	4%
Energy (kcal)	80 kcal	4%
Fat	0.7 g	1%
of which Saturates	0.1 g	1%
of which Mono-unsaturates	0.1 g	
of which Polyunsaturates	0.3 g	
Carbohydrate	0 g	0%
of which Sugars	0 g	0%
Fibre	0 g	
Protein	18.3 g	37%
Salt	0.15 g	3%
Sodium	60 mg	

VITAMINS AND MINERALS

Nutrient	per 100g	RI per 100g
Vitamin A	2 µg	0%
Vitamin C	0 mg	0%
Folate/Folic Acid	12 µg	6%
Calcium	9 mg	1%
Iron	0.1 mg	1%
Zinc	0.4 mg	4%

SUPPLEMENTARY NUTRITIONAL INFORMATION

Cholesterol per 100 g/ml (UK/FR)	0.05 g
-----------------------------------------	--------

HANDLING & STORAGE INFORMATION

Directions For Use

Keep Frozen. Once defrosted do not refreeze. Ensure food is cooked for a minimum 72oC for 2 minutes Defrost in a refrigerator at less than 5oC for 24 hours and then use within 24 hours

Storage Instructions

Keep Frozen. Once defrosted do not refreeze.

Shelf Life from Time of Production	730 Days	Exempt From Shelf Life Labelling	No
-------------------------------------------	----------	-----------------------------------------	----

ACCREDITATIONS/
CERTIFICATIONS/
ASSURANCE
SCHEMES
ORIGIN

Marine Stewardship Council (MSC)

Other Accreditation

Product Country of Origin/Place of United Kingdom

Provenance

Additional Origin Details

Packed in UK Trawl Caught North East Atlantic (FAO27) (Sub Areas: Barents Sea, Norwegian Sea, Spitzbergen and Bean Island), Baltic Sea, Iceland and Faroes Grounds)

PRODUCT
CHARACTERISTICS

Standards Testing

Do you undertake trend analysis of microbiological results? No

Is shelf life testing undertaken? No

Microbiological Standards

Organism	Description	Frequency	Target	Maximum	Sample (g or ml)
Coliforms (cfu/g or ml)		Occasionally	<100	1000	100
E. Coli (cfu/g or ml)		Occasionally	<50	100	100
Listeria Monocytogenes (cfu/g or ml)		Occasionally	<0	0	25
Staphylococcus Aureus (cfu/g or ml)		Occasionally	<100	500	100
Total Viable Count (TVC) (cfu/g or ml)		Occasionally	<100000	1000000	100
Salmonella (cfu/g or ml)		Occasionally	<0	0	25

Physical Standards

Test	Description	Frequency	Target	Range	Sample (g or ml)
Glaze Level (%)		Occasionally	=10	8 to 12	100

CONFIGURATION

Case Configuration

Inner Pack Configuration

Total Quantity of Inner Components in Outer Case 1 Units

Is the Outer Case Splittable? No

PRODUCT
WEIGHTS

Inner Component

Variable Weight Consumer Item Yes

Outer Case

Outer Case Gross Weight 4.85 kg

Outer Case Net Weight 4.54 kg

PRODUCT
DIMENSIONS

Inner Component

Inner Component Depth 300 mm

Inner Component Width 210 mm

Inner Component Height 90 mm

Outer Case

Outer Case Depth 290 mm

Outer Case Width 190 mm

Outer Case Height 100 mm

PALLET
INFORMATION

Non Palletised Yes

PACKAGING

Inner Component Packaging

Type	Materials	Weight	Recycled Plastic %	Recyclable	Returnable	Composite
Bag	Plastic	10 g	- %			

Outer Case Packaging

Type	Materials	Weight	Recycled Plastic %	Recyclable	Returnable	Composite
Case	Paper/Cardboard	300 g	- %			

OTHER INFORMATION

Manufacturer Comments

The minimum order quantity from Smales is one mixed pallet. So as long as you order a full pallet of product you could just order 1 case Smales themselves hold BRC in Wholesale and Distribution

CONTACT INFORMATION

Address

Smales Fish Merchants Ltd
30, West Dock Street
West Dock Street
Hull
HU3 4HL
England

Technical Contact

Sally Johnson
Technical Manager
sally.johnson@smales.co.uk

P: (Phone) 01482 593696

P: (Phone) 01482 324997

Complaints Contact

Sally Johnson
Technical Manager
sally.johnson@smales.co.uk

P: (Phone) 01482 593696

The information on the [Erudus System](#) has been supplied by the manufacturers of the products and, whilst the owners of the Erudus System take steps to ensure the information is regularly updated, they give no warranty and no guarantee that the information is accurate. Product information and ingredients may change, please always read product labels carefully in addition to using the information provided by Erudus.

We do not accept liability for any inaccuracies or incorrect information contained on this site.
Please visit <http://www.erudus.com/terms-and-conditions> for full terms and conditions.