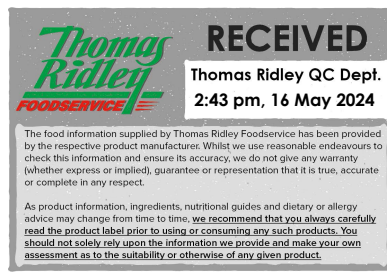


Changed Apr 17, 2024 12:51

Reviewed Apr 17, 2024 12:51

Erudus ID ddeb72bbb63e4dab91b802f34502972d

Version 2.0



07274

Alfees Chipotle BBQ Sauce 2 x 2.5kg

Chipotle Bbq Sauce

PRODUCT DESCRIPTION

Flavour: Sweet, Smoky & Spicy Colour: Dark Brown Texture: Smooth Pouring Odour: Smoke & Acidic

Brand	Rich Sauces
Manufacturer Product Code	ALFCHIBBQ2.5X2
Product Type	Food
Product Category	Condiments
Storage Type	Ambient
Erudus ID	ddeb72bbb63e4dab91b802f34502972d
Specification Type	Generic
Inner Component GTIN	5060051292798
Inner Pack GTIN	5060051296123
Outer Case GTIN	15060051296120



INGREDIENTS

Ingredient Declaration

Water, Sugar, Acidity Regulator: Acetic Acid, Tomatoes (11%), Modified Starch, Salt, Worcester Sauce (Malt Vinegar (**BARLEY**), Water, Spirit Vinegar, Tamarind Paste, Sugar, Colour: Caramel, Onion Powder, Garlic Powder, White Pepper, Cloves, Paprika); Chipotle Chillies (1%), Onion Powder, Minced Onion, Lime Concentrate, Colour: Caramel, Spice Extracts, Smoke Flavouring, Stabilisers: Xanthan Gum & Guar Gum, Spice, Preservative: Potassium Sorbate

ALLERGENS

Product Contains:

Celery/Celeriac	No
Cereals Containing Gluten	Yes (<20ppm)
Barley	Yes (<20ppm)
Oats	No
Rye	No
Wheat (including Spelt and Khorasan)	No
Crustacea	No
Eggs	No
Fish	No
Lupin	No
Milk	No
Molluscs	No
Mustard	No
Nuts (Tree)	No
Almond nuts	No
Brazil nuts	No
Cashew nuts	No
Hazelnuts	No
Macadamia (Queensland) nuts	No
Pecan nuts	No
Pistachio nuts	No
Walnuts	No
Peanuts	No
Sesame Seeds	No
Soybeans	No
Sulphur Dioxide and Sulphites	No

Allergen Statement On Pack

BARLEY

Additional Allergen Information

Contains Barley

SUPPLEMENTARY INGREDIENT INFORMATION

Palm Oil	No
Hydrogenated Vegetable Oil/Fat	No
GM Protein/DNA	No

ADDITIVES

Product Contains:

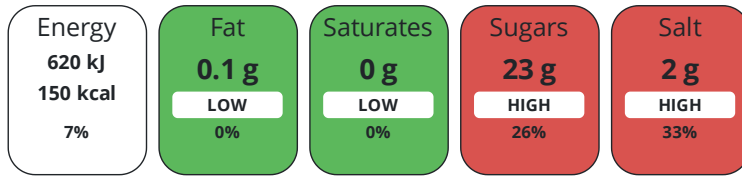
Artificial Antioxidants	No
Artificial Colours	No
Artificial Flavour Enhancers	No
Artificial Flavourings	No
Artificial Preservatives	Yes
Artificial Sweeteners	No

DIET SUITABILITY

Vegan Diet	Suitable for	Vegetarian Diet	Suitable for
Halal Diet	No	Kosher Diet	No

NUTRITIONAL INFORMATION

Each 100g/ml portion contains:



of your reference intake.

Typical values per 100g/ml : Energy 150kcal / 620kj

Nutrient	per 100g	RI per 100g	per 30g serving	RI per 30g serving
Energy (kJ)	620 kJ	7%	186 kJ	2%
Energy (kcal)	150 kcal	8%	45 kcal	2%
Fat	0.1 g	0%	-	-
of which Saturates	0 g	0%	-	-
Carbohydrate	28 g	11%	8.4 g	3%
of which Sugars	23 g	26%	6.9 g	8%
Fibre	0 g	-	-	-
Protein	0.8 g	2%	0.2 g	0%
Salt	2 g	33%	0.6 g	10%
Serving Size			30 g	

Source of Nutritional Information Calculation from known/accepted datasets

VITAMINS AND MINERALS

Nutrient	per 100g	RI per 100g	per 30g serving	RI per 30g serving
Vitamin A	0 µg	0%	-	-
Vitamin C	1 mg	1%	0.3 mg	0%
Folate/Folic Acid	5 µg	3%	1.5 µg	1%
Calcium	7 mg	1%	2.1 mg	0%
Iron	0.3 mg	2%	0.1 mg	1%
Zinc	0.1 mg	1%	-	-

SUPPLEMENTARY NUTRITIONAL INFORMATION

Cholesterol per 100 g/ml (UK/FR) 0 g

HFSS (HIGH IN FAT, SALT AND SUGAR)

HFSS Status Yes

HANDLING & STORAGE INFORMATION

Directions For Use

For best results: store below 5°C

Storage Instructions

Store ambient unopened, refrigerate after opening and use within 21 days

Shelf Life from Time of Production

300 Days

Exempt From Shelf Life Labelling

No

ACCREDITATIONS/ CERTIFICATIONS/ ASSURANCE SCHEMES

BRCGS Certified

ISO 14001 (Environmental Management)

Other Accreditation

ORIGIN

Product Country of Origin/Place of United Kingdom

Provenance

Additional Origin Details

UK

PRODUCT CHARACTERISTICS

Standards Testing

CONFIGURATION

Case Configuration

Total Quantity of Inner Components in Outer Case 2 Units

Is the Outer Case Splittable? Yes

Inner Pack Configuration

PRODUCT WEIGHTS

Inner Component

Variable Weight Consumer Item Yes

Outer Case

Outer Case Gross Weight 5.2 kg

Outer Case Net Weight 5 kg

PRODUCT DIMENSIONS

Inner Component

Inner Component Depth 132 mm

Inner Component Width 104 mm

Inner Component Height 243 mm

Outer Case

Outer Case Depth 132 mm

Outer Case Width 104 mm

Outer Case Height 243 mm

PALLET INFORMATION

Quantity of Cases Per Pallet Layer 41 Cases

Quantity of Layers Per Pallet 5 Layers

Quantity of Cases Per Pallet 205 Cases

Pallet Height 1.4 MTR

PACKAGING

Inner Component Packaging

Type	Materials	Weight	Recycled Plastic %	Recyclable	Returnable	Composite
Tub	Plastic	110 g	- %			
Tub	Paper/Cardboard	2 g	- %			

Outer Case Packaging

Type	Materials	Weight	Recycled Plastic %	Recyclable	Returnable	Composite
Bag	Plastic	10 g	0.00 %			

Transport Packaging

Type	Materials	Weight	Recycled Plastic %	Recyclable	Returnable	Composite
Other	Plastic	158 g	0.00 %			
Other	Wood	15000 g	- %			

OTHER INFORMATION

Manufacturer Comments

N/A

CONTACT INFORMATION

Address

Rich Sauces
34 Jubilee Road
Newtownards
Down
BT23 6YH
England

Phone 02891819004

The information on the [Erudus System](#) has been supplied by the manufacturers of the products and, whilst the owners of the Erudus System take steps to ensure the information is regularly updated, they give no warranty and no guarantee that the information is accurate. Product information and ingredients may change, please always read product labels carefully in addition to using the information provided by Erudus.

We do not accept liability for any inaccuracies or incorrect information contained on this site.
Please visit <http://www.erudus.com/terms-and-conditions> for full terms and conditions.