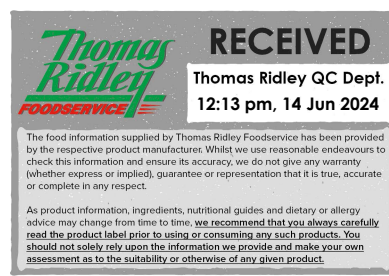


Changed Jun 13, 2024 14:16

Reviewed Jun 13, 2024 14:16

Erudus ID 07ed3d562b4a4814b50989077f075297

Version 3.0



07371

# LION Very Hot Chilli Sauce 2 x 2.27L

Very Hot Chilli Sauce

## PRODUCT DESCRIPTION

Appearance /Texture: A semi viscous paste, textured from crushed chilli seeds. Dark red / brown sauce with pieces of chilli visible. Taste: Distinctive hot and fiery flavour, sharp acid notes. Aroma: Acidic and chilli smell.

Brand	AAK Foods Limited
Manufacturer Product Code	F2567 (B0872)
Product Type	Food
Product Category	Condiments
Storage Type	Ambient
Erudus ID	07ed3d562b4a4814b50989077f075297
Specification Type	Generic



## INGREDIENTS

### Ingredient Declaration

Water, Crushed Chilli (10%), Acidity Regulator (Acetic Acid), Cayenne Pepper (3%), Salt, Modified Maize Starch, Stabiliser (Xanthan Gum).

## ALLERGENS

Product Contains:

<b>Celery/Celeriac</b>	No	<b>Mustard</b>	No
<b>Cereals Containing Gluten</b>	No	<b>Nuts (Tree)</b>	No
<b>Barley</b>	No	<b>Almond nuts</b>	No
<b>Oats</b>	No	<b>Brazil nuts</b>	No
<b>Rye</b>	No	<b>Cashew nuts</b>	No
<b>Wheat (including Spelt and Khorasan)</b>	No	<b>Hazelnuts</b>	No
<b>Crustacea</b>	No	<b>Macadamia (Queensland) nuts</b>	No
<b>Eggs</b>	No	<b>Pecan nuts</b>	No
<b>Fish</b>	No	<b>Pistachio nuts</b>	No
<b>Lupin</b>	No	<b>Walnuts</b>	No
<b>Milk</b>	No	<b>Peanuts</b>	No
<b>Molluscs</b>	No	<b>Sesame Seeds</b>	No
		<b>Soybeans</b>	No
		<b>Sulphur Dioxide and Sulphites</b>	No

## SUPPLEMENTARY INGREDIENT INFORMATION

<b>Palm Oil</b>	No
<b>Hydrogenated Vegetable Oil/Fat</b>	No
<b>GM Protein/DNA</b>	No

## ADDITIVES

Product Contains:

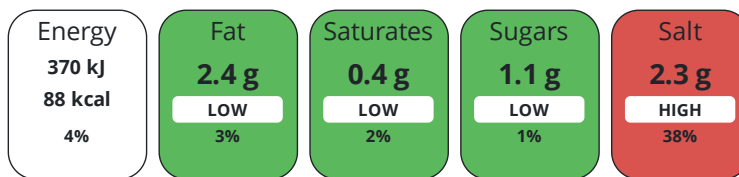
<b>Artificial Antioxidants</b>	No	<b>Artificial Flavourings</b>	No
<b>Artificial Colours</b>	No	<b>Artificial Preservatives</b>	No
<b>Artificial Flavour Enhancers</b>	No	<b>Artificial Sweeteners</b>	No

DIET  
SUITABILITY

<b>Vegan Diet</b>	Suitable for	<b>Vegetarian Diet</b>	Suitable for
<b>Halal Diet</b>	No	<b>Kosher Diet</b>	No

NUTRITIONAL  
INFORMATION

Each 100g/ml portion contains:



of your reference intake.

Typical values per 100g/ml : Energy 88kcal / 370kJ

Nutrient	per 100ml	RI per 100ml	per 15ml serving	RI per 15ml serving
<b>Energy (kJ)</b>	370 kJ	4%	55.5 kJ	1%
<b>Energy (kcal)</b>	88 kcal	4%	13.2 kcal	1%
<b>Fat</b>	2.4 g	3%	0.4 g	1%
<b>of which Saturates</b>	0.4 g	2%	0.1 g	1%
<b>Carbohydrate</b>	9.6 g	4%	1.4 g	1%
<b>of which Sugars</b>	1.1 g	1%	0.2 g	0%
<b>Fibre</b>	4.7 g		0.7 g	
<b>Protein</b>	1.7 g	3%	0.3 g	1%
<b>Salt</b>	2.3 g	38%	0.3 g	5%
<b>Serving Size</b>	15 ml			

SUPPLEMENTARY  
NUTRITIONAL  
INFORMATION

HANDLING &  
STORAGE  
INFORMATION

**Directions For Use**

Use as a sauce, dip or marinade. Lion Very Hot Chilli Sauce really packs a kick, it's made with red hot chillies and you can see the seeds in the sauce! Great to give a fiery kick to burgers and kebabs and also works very well in Chilli Con Carnes.

**Storage Instructions**

Store in a cool dry place. Refrigerate after opening and consume within 4 weeks from opening and by date BBE.

**Shelf Life from Time of Production** 570 Days

ACCREDITATIONS/  
CERTIFICATIONS/  
ASSURANCE  
SCHEMES  
ORIGIN

**BRCGS Certified** **Other Accreditation**

**Product Country of Origin/Place of** United Kingdom

**Provenance**

**Additional Origin Details**

Produced in the UK.

PRODUCT  
CHARACTERISTICS

Standards Testing

**Do you undertake trend analysis of microbiological results?** No **Is shelf life testing undertaken?** No

CONFIGURATION

Case Configuration Inner Pack Configuration

**Total Quantity of Inner Components in Outer Case** 2 Units

PRODUCT WEIGHTS

Inner Component	
<b>Variable Weight Consumer Item</b>	Yes
<b>Net Drained Weight</b>	0 g
Outer Case	
<b>Outer Case Gross Weight</b>	4.82 kg
<b>Outer Case Net Weight</b>	4.6 kg

PRODUCT DIMENSIONS

Inner Component	
<b>Inner Component Depth</b>	121 mm
<b>Inner Component Width</b>	120 mm
<b>Inner Component Height</b>	236 mm
Outer Case	
<b>Outer Case Depth</b>	242 mm
<b>Outer Case Width</b>	120 mm
<b>Outer Case Height</b>	236 mm

PALLET INFORMATION

<b>Quantity of Cases Per Pallet Layer</b>	40 Cases	<b>Pallet Height</b>	1.1 MTR
<b>Quantity of Layers Per Pallet</b>	5 Layers	<b>Pallet Gross Weight</b>	793 kg
<b>Quantity of Cases Per Pallet</b>	200 Cases		

PACKAGING

Inner Component Packaging						
Type	Materials	Weight	Recycled Plastic %	Recyclable	Returnable	Composite
Bottle	Plastic	104 g	- %			
Bottle	Paper/Cardboard	3.5 g	- %			
Outer Case Packaging						
Type	Materials	Weight	Recycled Plastic %	Recyclable	Returnable	Composite
Case	Plastic	10 g	- %			
Case	Paper/Cardboard	1 g	- %			
Transport Packaging						
Type	Materials	Weight	Recycled Plastic %	Recyclable	Returnable	Composite
Other	Plastic	500 g	- %		Yes	
Other	Paper/Cardboard	330 g	- %		Yes	
Other	Wood	20000 g	- %		Yes	

OTHER INFORMATION

**Manufacturer Comments**

Net Drained Weight is nil as Product packed to an average weight. Nutritional is stated per 100ml Porstion is stated as 15ml  
 Added SO2 = 0 mg/kg

CONTACT INFORMATION

Address	Technical Contact
AAK Foods Limited	Andy Reid
AAK (UK) Ltd.	Specifications Admin & Technologist
King George Dock	Andrew.Reid@aak.com
Hull	
HU9 5PX	<u>P: (Phone)</u> 01928276040
England	
<u>P: (Phone)</u> 01482 701271	

The information on the [Erudus System](#) has been supplied by the manufacturers of the products and, whilst the owners of the Erudus System take steps to ensure the information is regularly updated, they give no warranty and no guarantee that the information is accurate. Product information and ingredients may change, please always read product labels carefully in addition to using the information provided by Erudus.

We do not accept liability for any inaccuracies or incorrect information contained on this site.  
Please visit <http://www.erudus.com/terms-and-conditions> for full terms and conditions.