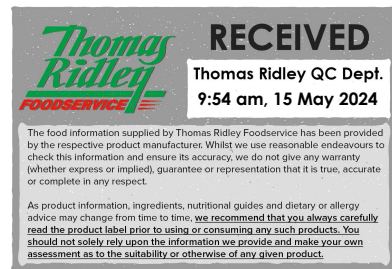


Changed May 14, 2024 11:15

Reviewed May 14, 2024 11:15

Erudus ID faac585b2f19432b9e4cc313391ff259

Version 3.0



07372

Sliced Monterey Jack SP 6x1kg

Spf Sliced Monterey Jack 6x1kg

PRODUCT DESCRIPTION

Sliced Spinneyfields Monterey Jack Cheese, packed into 1kg trays.

Brand	Ornua Ingredients Europe (UK) Ltd
Manufacturer Product Code	489900
Product Type	Food
Product Category	Other Dairy
Storage Type	Chilled
Erudus ID	faac585b2f19432b9e4cc313391ff259
Specification Type	Dairy

Monterey Jack

Inner Component GTIN	5011648999118
Manufacturer Component Code	489900
Inner Pack GTIN	5011648999118
Inner Pack Product Code	489900
Outer Case GTIN	05011648900695



INGREDIENTS

Ingredient Declaration

Monterey Jack (MILK)

ALLERGENS

Product Contains:

Celery/Celeriac	No
Cereals Containing Gluten	No
Barley	No
Oats	No
Rye	No
Wheat (including Spelt and Khorasan)	No
Crustacea	No
Eggs	No
Fish	No
Lupin	No
Milk	Yes
Molluscs	No
Mustard	No
Nuts (Tree)	No
Almond nuts	No
Brazil nuts	No
Cashew nuts	No
Hazelnuts	No
Macadamia (Queensland) nuts	No
Pecan nuts	No
Pistachio nuts	No
Walnuts	No
Peanuts	No
Sesame Seeds	No
Soybeans	No
Sulphur Dioxide and Sulphites	No

Allergen Statement On Pack

Allergens: see ingredients in CAPITALS.

SUPPLEMENTARY INGREDIENT INFORMATION

Palm Oil	No
Hydrogenated Vegetable Oil/Fat	No
GM Protein/DNA	No

ADDITIVES

Product Contains:

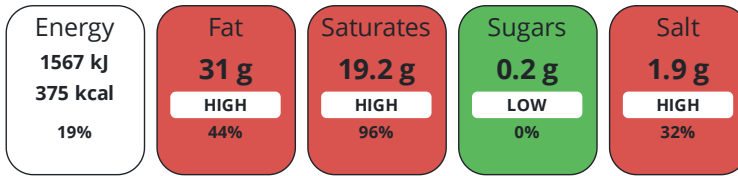
Artificial Antioxidants	No
Artificial Colours	No
Artificial Flavour Enhancers	No
Artificial Flavourings	No
Artificial Preservatives	No
Artificial Sweeteners	No

DIET SUITABILITY

Vegetarian Diet	Suitable for	Halal Diet	Suitable for
Kosher Diet	No		

NUTRITIONAL INFORMATION

Each 100g/ml portion contains:



of your reference intake.

Typical values per 100g/ml : Energy 375kcal / 1567kJ

Nutrient	per 100g	RI per 100g
Energy (kJ)	1567 kJ	19%
Energy (kcal)	375 kcal	19%
Fat	31 g	44%
of which Saturates	19.2 g	96%
Carbohydrate	0.2 g	0%
of which Sugars	0.2 g	0%
Fibre	0 g	
Protein	23 g	46%
Salt	1.9 g	32%

SUPPLEMENTARY NUTRITIONAL INFORMATION

HFSS (HIGH IN FAT, SALT AND SUGAR)

HFSS Status	Yes
HFSS Score	22

HANDLING & STORAGE INFORMATION

Directions For Use

Use as sliced cheese.

Storage Instructions

Stored chilled 0-5C.

Storage Instructions After Opening

Stored chilled

Shelf Life from Time of Production	84 Days
Shelf Life From Opening	3 Days
Exempt From Shelf Life Labelling	No

ACCREDITATIONS/ CERTIFICATIONS/ ASSURANCE SCHEMES

BRCGS Certified	BRCGS Food Safety
Other Accreditation	

ORIGIN

Product Country of Origin/Place of Provenance	United Kingdom
---	----------------

Additional Origin Details

Ireland

PRODUCT CHARACTERISTICS

Standards Testing

Do you undertake trend analysis of microbiological results?	Yes
Is shelf life testing undertaken?	Yes

SUPPLEMENTARY INFORMATION

Milk Type	Cow	Pasteurised	Yes			
HAZARD CONTROLS						
Metal Detection	Yes					
CONFIGURATION						
Case Configuration						
Variable Inner Components in Outer Case			Yes			
Total Quantity of Inner Components in Outer Case			6 Units			
Total Quantity of Inner Packs in Outer Case			6 Units			
Is the Outer Case Splittable?			Yes			
Inner Pack Configuration						
Is Inner Pack Splittable?			Yes			
Quantity of Inner Components in Inner Pack			1			
PRODUCT WEIGHTS						
Inner Component						
Variable Weight Consumer Item			No			
Inner Component Weight			1 kg			
e mark			Yes			
Inner Pack						
Inner Pack Gross Weight			1.03 kg			
Inner Pack Net Weight			1 kg			
Outer Case						
Outer Case Gross Weight			6.58 kg			
Outer Case Net Weight			6 kg			
PRODUCT DIMENSIONS						
Inner Component						
Inner Component Depth			316 mm			
Inner Component Width			123 mm			
Inner Component Height			48 mm			
Inner Pack						
Inner Pack Depth			315 mm			
Inner Pack Width			123 mm			
Inner Pack Height			48 mm			
Outer Case						
Outer Case Depth			325 mm			
Outer Case Width			247 mm			
Outer Case Height			155 mm			
PALLET INFORMATION						
Quantity of Cases Per Pallet Layer			14 Cases			
Quantity of Layers Per Pallet			8 Layers			
Quantity of Cases Per Pallet			112 Cases			
Pallet Height			1.4 MTR			
Pallet Gross Weight			762 kg			
PACKAGING						
Inner Component Packaging						
Type	Materials	Weight	Recycled Plastic %	Recyclable	Returnable	Composite
Tray	Plastic	22 g	- %	No	No	
Film	Plastic	6 g	- %	No	No	

Outer Case Packaging

Type	Materials	Weight	Recycled Plastic %	Recyclable	Returnable	Composite
Case	Paper/Cardboard / Cardboard	410 g	- %	Yes	No	

Transport Packaging

Type	Materials	Weight	Recycled Plastic %	Recyclable	Returnable	Composite
Pallet	Wood	25000 g	- %	Yes	Yes	

OTHER INFORMATION

Identification/Health Marks

GB AX 009

Manufacturer Comments

n/a

CONTACT INFORMATION

Address

Ornua Ingredients Europe (UK) Ltd
Spinneyfields Farm
Worleston
Nantwich
Cheshire
CW5 6DN
England

P: (Phone) 01270 611 112

Technical Contact

Tina Lui
Supplier Assurance & Specifications Technologist
tina.lui@ornua.com

P: (Phone) 01270 611112

Complaints Contact

Karen Lomas
Quality System Manager
karen.lomas@ornua.com

P: (Phone) 01270 611112

Commercial Contact

Stephanie Spain
Account Manager
stephanie.spain@ornua.com

P: (Phone) 01270 611112

The information on the [Erudus System](#) has been supplied by the manufacturers of the products and, whilst the owners of the Erudus System take steps to ensure the information is regularly updated, they give no warranty and no guarantee that the information is accurate. Product information and ingredients may change, please always read product labels carefully in addition to using the information provided by Erudus.

We do not accept liability for any inaccuracies or incorrect information contained on this site.
Please visit <http://www.erudus.com/terms-and-conditions> for full terms and conditions.