

PRODUCT SPECIFICATION

| | | |
|--|---|--|
| Product Description | SLEEPEASY SAUCES - Hollandaise 6 x 500ml - 480g | 7705-092 |
| Brand Name | Sleepeasy Hollandaise | |
| Sub-Description | Hollandaise |  |
| Product Bar Code | 5036582005978 | |
| Outer Bar Code | 05036582005985 | |
| Pack & Size | 6 x 0.5L | |
| Country of Origin | Made In UK using UK ingredients | |
| Descriptive Name | A plant based Hollandaise sauce made with rapeseed oil and lemon juice. | |
| Ingredients List | Rapeseed Oil (47%), Water, Lemon Juice NFC, White Wine Vinegar, Salt, Emulsifier (Sunflower Lecithin), Thickener (Xanthan Gum), Yeast Extracts, Concentrate (Carrot and Pumpkin), Natural Flavouring. | |
| Instructions | Ambient stable, once opened, refrigerate and use within 7 days Store in a cool, dry place out of direct sunlight. | |
| Suggested Uses | Use as Hollandaise or as a building block to create a Bearnaise, Orange, Cream or Dill and lemon Sauce. | |
| Features and Benefits | <ul style="list-style-type: none"> • Allergen free and suitable for vegans, vegetarians, gluten free and lactose free • Plant based • Winner Silver 2022 Free From Food Awards | |
| Allergen Free* & Suitable For | <ul style="list-style-type: none"> ✓ Vegan ✓ Vegetarian ✓ Gluten Free ✓ Lactose Free <p>*Regulation (EU) No 1169/2011</p> | |
| Allergens Label Declaration | Allergen Free | |

PRODUCT SPECIFICATION



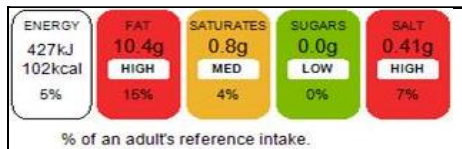
SLEEPEASY SAUCES - Hollandaise 6 x 500ml - 480g

NUTRITIONAL INFORMATION

As sold information

| Constituents | Per 100g |
|-----------------------|----------|
| Energy, KJ | 1707 |
| Energy, Kcal | 408 |
| Fat, g | 42 |
| of which Saturates, g | 3.3 |
| Carbohydrate, g | 1.9 |
| of which Sugars, g | 0.2 |
| Protein, g | 0.2 |
| Salt, g | 1.66 |

Per Portion 25g



TECHNICAL DETAILS

| | | | |
|--------------|---------------------|--------------------------------|-----|
| Date Marking | 6 MONTHS BBE: MM/YY | | |
| Shelf Life | 6 months | Minimum Shelf Life On Delivery | n/a |
| Temperature | Ambient | | |

ORGANOLEPTIC

| | |
|--------------|---------------------|
| On the nose: | Citrus and butter. |
| Colour: | Pantone 1205 C |
| Taste: | Buttery, lemon. |
| Texture: | Smooth (not gritty) |

PHYSICAL & CHEMICAL STANDARDS

| | |
|----|------|
| pH | <3.8 |
|----|------|

MICROBIOLOGICAL

| | |
|-------------------------|---------------------|
| Aerobic plate count | <500 cfu/ml |
| E.Coli | <10 cfu/g |
| Salmonella | Not Detected in 25g |
| Listeria | <100 cfu/g |
| Yeasts and moulds count | <10 cfu/ml |

PACKAGING

| | Type | Dimensions, mm | Weight, g | Recyclability |
|---------------------------------------|----------------|--------------------------|-----------|--------------------------|
| Primary Packaging (Inner) | Plastic Bottle | 223(H) x 60(L) x 60(W) | 154 | 100% recyclable material |
| Secondary Packaging (Outer) | Cardboard Box | 232(H) x 205(L) x 137(W) | 134 | 100% recyclable material |
| Tertiary Packaging (Shrink wrap etc.) | Pallet Film | N/A | 500 | 100% recyclable material |

| | Layers | Packs per Layer | Total Packs | Gross Weight, Kg |
|--------|--------|-----------------|-------------|------------------|
| Pallet | 4 | 40 | 160 | 600 |

PRODUCT SPECIFICATION



SLEEPEASY SAUCES - Hollandaise 6 x 500ml - 480g

CODING

Primary Pack BBE: MM/YY"L"YDDD HH:MM

Outer Pack BBE: MM/YY"L"YDDD

EXPLANATION OF DATE CODING SYSTEM

"L" followed by last digit of year (Y), followed by Julien Date (366 system) (DDD)

PACKAGING STATEMENT

We declare that the above mentioned packaging materials supplied comply with the provisions of Regulation (EU) 10/2011 relating to plastic materials and articles intended to come into contact with foodstuffs, and are suitable for contact with food. Also we confirm that our products comply with the requirements of EU regulation 1935/2004 for the traceability of food-contact materials.

GM STATEMENT

We certify that we do not knowingly use genetically modified organisms or enzymes derived from these for the manufacture of any of our products according to EC regulation 1829/2003 on genetically modified food and feed and EC regulation 1830/2003 concerning the traceability and labelling of genetically modified organisms and traceability of food and feed products produced from genetically modified organisms and amending Directive 2001/18. We seek assurance from our suppliers to substantiate this position.

PRODUCT CONTAINS INFORMATION

| ITEM | Yes/No |
|--|--------|
| Celery | No |
| Cereals that contain gluten (including wheat, rye, barley and oats) | No |
| Crustaceans (including prawns, crabs and lobsters) | No |
| Eggs | No |
| Fish | No |
| Lupin (lupins are common garden plants, and the seeds from some varieties are sometimes used to make flour) | No |
| Milk | No |
| Molluscs (including mussels and oysters) | No |
| Mustard | No |
| Tree nuts – such as almonds, hazelnuts, walnuts, brazil nuts, cashews, pecans, pistachios and macadamia nuts | No |
| Peanuts | No |
| Sesame seeds | No |
| Soybeans | No |
| Sulphur dioxide and sulphites (> 10 ppm) | No |

SUITABLE FOR

| | |
|-------------------------|-----|
| Vegetarians | Yes |
| Vegans | Yes |
| Coeliacs (Gluten Free) | Yes |
| Nut Allergy Sufferer | Yes |
| Lactose Intolerant Diet | Yes |

SUPPLIER DETAILS

Name and address head office Gourmet Classic Limited
Commercial Contact Customer Services Manager - Tel: +44 (0) 1202 863040
Technical Contact Technical Manager - Tel: +44 (0)1202 863040
Emergency Contact Customer Services Manager - Tel: +44 (0) 1202 863040

TECHNICAL APPROVAL 31/05/2023

Document uncontrolled when downloaded or printed.