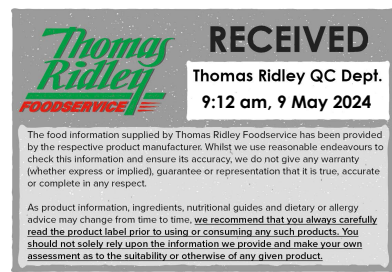


Changed May 08, 2024 15:33

Reviewed May 08, 2024 15:33

Erudus ID 520d9e5c5a09447db1f3ba3a4ed5367f

Version 2.0



07801

McDougalls Fat Reduced Cocoa Powder 500g

Fat Reduced Cocoa Powder 6x500g

PRODUCT DESCRIPTION

Fat Reduced Cocoa Powder 500g

Brand	Premier Foods
Manufacturer Product Code	1018677
Product Type	Food
Product Category	Baking Mixes and Bakery Ingredients
Storage Type	Ambient
Erudus ID	520d9e5c5a09447db1f3ba3a4ed5367f
Specification Type	Generic
Inner Component GTIN	5000354925467



INGREDIENTS

Ingredient Declaration

Fat Reduced Cocoa Powder, Acidity Regulator (Potassium Carbonate).

Ingredient Statements

Contains cocoa butter 10% minimum.

ALLERGENS

Product Contains:

Celery/Celeriac	No
Cereals Containing Gluten	No
Barley	No
Oats	No
Rye	No
Wheat (including Spelt and Khorasan)	No
Crustacea	No
Eggs	No
Fish	No
Lupin	No
Milk	No
Molluscs	No
Mustard	No
Nuts (Tree)	No
Almond nuts	No
Brazil nuts	No
Cashew nuts	No
Hazelnuts	No
Macadamia (Queensland) nuts	No
Pecan nuts	No
Pistachio nuts	No
Walnuts	No
Peanuts	No
Sesame Seeds	No
Soybeans	No
Sulphur Dioxide and Sulphites	No

Additional Allergen Information

N/A

SUPPLEMENTARY INGREDIENT INFORMATION

Palm Oil	No
Hydrogenated Vegetable Oil/Fat	No
GM Protein/DNA	No

ADDITIVES

Product Contains:

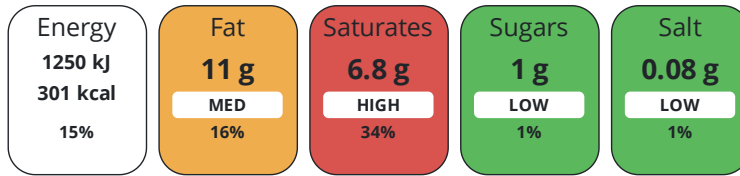
Artificial Antioxidants	No
Artificial Colours	No
Artificial Flavour Enhancers	No
Artificial Flavourings	No
Artificial Preservatives	No
Artificial Sweeteners	No

DIET SUITABILITY

Vegan Diet	No	Vegetarian Diet	Suitable for
Halal Diet	No	Kosher Diet	No

NUTRITIONAL INFORMATION

Each 100g/ml portion contains:



of your reference intake.

Typical values per 100g/ml : Energy 301kcal / 1250kJ

Nutrient	per 100g	RI per 100g
Energy (kJ)	1250 kJ	15%
Energy (kcal)	301 kcal	15%
Fat	11 g	16%
of which Saturates	6.8 g	34%
Carbohydrate	12.5 g	5%
of which Sugars	1 g	1%
Fibre	32 g	
Protein	22 g	44%
Salt	0.08 g	1%

SUPPLEMENTARY NUTRITIONAL INFORMATION

HFSS (HIGH IN FAT, SALT AND SUGAR)

HFSS Status No

HANDLING & STORAGE INFORMATION

Directions For Use

Preparation Instructions Hot Chocolate: For 1 cup use a teaspoon (4g) of cocoa powder to 200ml of milk. For 1 litre use 20g of cocoa powder to 1000ml of milk.

1. Mix cocoa powder with enough milk to make a smooth paste. 2. Heat the milk to not quite boiling point and stir into the cocoa, sweeten to taste.

Storage Instructions

Store in a cool dry place.

Shelf Life from Time of Production

730 Days

Exempt From Shelf Life Labelling

No

ACCREDITATIONS/ CERTIFICATIONS/ ASSURANCE SCHEMES

BRCGS Certified

ORIGIN

Product Country of Origin/Place of

United Kingdom

Provenance

Additional Origin Details

N/A

PRODUCT CHARACTERISTICS

Standards Testing

Do you undertake trend analysis of microbiological results?

No

Is shelf life testing undertaken?

No

CONFIGURATION

Case Configuration

Total Quantity of Inner Components in Outer Case

6 Units

Inner Pack Configuration

PRODUCT WEIGHTS

Inner Component

Variable Weight Consumer Item	No
Inner Component Weight	500 g
Outer Case	
Outer Case Gross Weight	3.55 kg
Outer Case Net Weight	3 kg

PRODUCT DIMENSIONS

Inner Component

Inner Component Depth	59 mm
Inner Component Width	142 mm
Inner Component Height	187 mm

Outer Case

Outer Case Depth	292 mm
Outer Case Width	200 mm
Outer Case Height	205 mm

PALLET INFORMATION

Quantity of Cases Per Pallet Layer	18 Cases
Quantity of Layers Per Pallet	6 Layers
Quantity of Cases Per Pallet	108 Cases
Pallet Height	1.39 MTR

PACKAGING

Inner Component Packaging

Type	Materials	Weight	Recycled Plastic %	Recyclable	Returnable	Composite
PE Laminated Paper Bag	Plastic	8 g	- %			
PE Laminated Paper Bag	Paper/Cardboard	33 g	- %			

Outer Case Packaging

Type	Materials	Weight	Recycled Plastic %	Recyclable	Returnable	Composite
Case	Paper/Cardboard	300 g	- %			

Transport Packaging

Type	Materials	Weight	Recycled Plastic %	Recyclable	Returnable	Composite
Other	Plastic	444 g	- %			

OTHER INFORMATION

Manufacturer Comments

The outer case barcode has been left blank for this spec as a new spec with a new CSN code needed to be published for 2024. Both this spec and the new spec will remain set to published on erudus for approx 12 months to allow for sell through of stocks. For reference the outer case barcode is =05000117922795

CONTACT INFORMATION

Address

Premier Foods
Premier Foods, Premier House
Centrium Business Park, Griffiths Way
St Albans
AL1 2RE
England

P: (Phone) 01727 815850

Technical Contact

Nicola Ratcliffe
Business Unit Coordinator
nicola.ratcliffe@premierfoods.co.uk

Complaints Contact

Consumer Relations Team
Customer Care
LCescalations@premierfoods.co.uk

The information on the [Erudus System](#) has been supplied by the manufacturers of the products and, whilst the owners of the Erudus System take steps to ensure the information is regularly updated, they give no warranty and no guarantee that the information is accurate. Product information and ingredients may change, please always read product labels carefully in addition to using the information provided by Erudus.

We do not accept liability for any inaccuracies or incorrect information contained on this site.
Please visit <http://www.erudus.com/terms-and-conditions> for full terms and conditions.