

# GLAZED & SEEDED POTATO BURGER BUN (RTA)

Glazed & Seeded Potato Burger Bun 45x90g

## PRODUCT DESCRIPTION

Frozen, fully baked, individual white glazed, seeded bread piece, suitable for filling.

Brand	Speciality Breads Ltd
Manufacturer Product Code	FB205
Manufacturer Version	4
Number	
Product Type	Food
Product Category	Bread Buns & Rolls
Storage Type	Frozen
Erudus ID	9f1310ceded5465299645f959acc6bb4
Specification Type	Bakery Products
Outer Case GTIN	5032633152059



## INGREDIENTS

**Ingredient Declaration**  
**Wheat** Flour (Fortified with Calcium Carbonate, Niacin, Iron, Thiamin), Water, Potato 3% (Dried potato, Processing aids: E 471), Glaze <2% (water, vegetable protein, rapeseed oil, maltodextrin, dextrose, starch), Vegetable Oils (Palm and Rapeseed), Water, Salt, Emulsifier E 471), Golden Linseed <2%, Yeast, **Wheat** Protein, Salt, Sugar, Poppy Seeds <1%, Flour Treatment Agent: E 300, **Barley** Malt Flour.

## ALLERGENS

Product Contains:

Celery/Celeriac	No
Cereals Containing Gluten	Yes
Barley	Yes
Oats	No
Rye	May Contain
Wheat (including Spelt and Khorasan)	Yes
Crustacea	No
Eggs	May Contain
Fish	No
Lupin	No
Milk	May Contain
Molluscs	No

Mustard	No
Nuts (Tree)	No
Almond nuts	No
Brazil nuts	No
Cashew nuts	No
Hazelnuts	No
Macadamia (Queensland) nuts	No
Pecan nuts	No
Pistachio nuts	No
Walnuts	No
Peanuts	No
Sesame Seeds	No
Soybeans	No
Sulphur Dioxide and Sulphites	No

Risk Source:

SUPPLEMENTARY  
INGREDIENT  
INFORMATION

Palm Oil	Yes
Hydrogenated Vegetable Oil/Fat	No
GM Protein/DNA	No

ADDITIVES

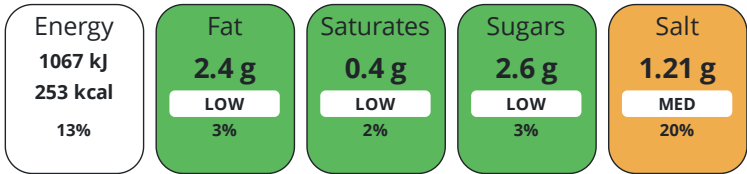
Product Contains:			
Artificial Antioxidants	No	Artificial Flavourings	No
Artificial Colours	No	Artificial Preservatives	No
Artificial Flavour Enhancers	No	Artificial Sweeteners	No

DIET  
SUITABILITY

Vegan Diet	Suitable for	Vegetarian Diet	Suitable for
Halal Diet	No	Kosher Diet	No

NUTRITIONAL  
INFORMATION

Each 100g/ml portion contains:



of your reference intake.

Typical values per 100g/ml : Energy 253kcal / 1067kJ

Nutrient	per 100g	RI per 100g	per 90g serving	RI per 90g serving
Energy (kJ)	1067.4 kJ	13%	960.7 kJ	11%
Energy (kcal)	252.6 kcal	13%	227.3 kcal	11%
Fat	2.4 g	3%	2.2 g	3%
of which Saturates	0.4 g	2%	0.4 g	2%
of which Mono-unsaturates	0.4 g		0.4 g	
of which Polyunsaturates	0.2 g		0.2 g	
Carbohydrate	49 g	19%	44.1 g	17%
of which Sugars	2.6 g	3%	2.3 g	3%
of which Starch	0 g		-	
Fibre	2.9 g		2.6 g	
Protein	9.4 g	19%	8.5 g	17%
Salt	1.21 g	20%	1.1 g	18%
Sodium	0.48 mg		0.4 mg	

Serving Size	90 g
--------------	------

VITAMINS AND  
MINERALS

Nutrient	per 100g	RI per 100g	per 90g serving	RI per 90g serving
Vitamin C	0 mg	0%	-	
Folate/Folic Acid	9.77 µg	5%	8.8 µg	4%
Calcium	4.72 mg	1%	4.2 mg	1%
Magnesium	5.94 mg	2%	5.3 mg	1%
Iron	0.08 mg	1%	0.1 mg	1%
Zinc	0 mg	0%	-	

SUPPLEMENTARY  
NUTRITIONAL  
INFORMATION

Cholesterol per 100 g/ml (UK/FR)	0 g
Trans Fats per 100 g/ml	0 g

HFSS (HIGH IN  
FAT, SALT AND  
SUGAR)  
HANDLING &  
STORAGE  
INFORMATION

HFSS Status	No
Directions For Use	FULLY BAKED. DEFROST INSIDE FOOD-SAFE PLASTIC BAG AT ROOM TEMPERATURE UNTIL COMPLETELY THAWED.
Storage Instructions	FROZEN. STORE AT -18°C, DO NOT RE-FREEZE
Shelf Life from Time of Production	365 Days

ACCREDITATIONS/  
CERTIFICATIONS/  
ASSURANCE  
SCHEMES  
ORIGIN

BRCGS Certified	Red Tractor
Roundtable of Sustainable Palm Oil (RSPO)	
Product Country of Origin/Place of Provenance	United Kingdom

PRODUCT  
CHARACTERISTICS

Standards Testing			
Do you undertake trend analysis of microbiological results?	Yes	Is shelf life testing undertaken?	Yes

CONFIGURATION

Case Configuration		Inner Pack Configuration	
Total Quantity of Inner Components in Outer Case	45 Units	Count per Inner Component	45
Is the Outer Case Splittable?	No		

PRODUCT  
WEIGHTS

Inner Component	
Variable Weight Consumer Item	No
Inner Component Weight	90 g
Outer Case	
Outer Case Gross Weight	4.46 kg
Outer Case Net Weight	0.41 kg

PRODUCT  
DIMENSIONS

Inner Component	
Inner Component Depth	595 mm
Inner Component Width	235 mm
Inner Component Height	268 mm
Outer Case	
Outer Case Depth	238 mm
Outer Case Width	598 mm
Outer Case Height	268 mm

PALLET  
INFORMATION

Quantity of Cases Per Pallet Layer	8 Cases	Pallet Type	UK Standard Pallet
Quantity of Layers Per Pallet	6 Layers	Pallet Height	1.85 MTR
Quantity of Cases Per Pallet	48 Cases	Pallet Gross Weight	225.28 kg

PACKAGING

Inner Component Packaging						
Type	Materials	Weight	Recycled Plastic %	Recyclable	Returnable	Composite
Bag	Plastic	17 g	- %			
Outer Case Packaging						
Type	Materials	Weight	Recycled Plastic %	Recyclable	Returnable	Composite
Case	Paper/Cardboard	389 g	- %			

OTHER INFORMATION	Transport Packaging						
	Type	Materials	Weight	Recycled Plastic %	Recyclable	Returnable	Composite
	Other	Plastic	525 g	- %		Yes	
	Other	Paper/Cardboard	110 g	- %		Yes	
	Intrastat/Taric Code		1905				
CONTACT INFORMATION	Address						
	Speciality Breads Ltd						
	Unit J2 Channel Road						
	Westwood Industrial Estate						
	Margate						
	Kent						
	CT9 4JS						
	England						
	P: (Phone) 01843 209442						

The information on the [Erudus System](#) has been supplied by the manufacturers of the products and, whilst the owners of the Erudus System take steps to ensure the information is regularly updated, they give no warranty and no guarantee that the information is accurate. Product information and ingredients may change, please always read product labels carefully in addition to using the information provided by Erudus.

We do not accept liability for any inaccuracies or incorrect information contained on this site.  
Please visit <http://www.erudus.com/terms-and-conditions> for full terms and conditions.