

## Cadbury Drinking Hot Chocolate 2kg



EAN  
5034660022190

Target market(s)  
GB, IE



RECEIVED

Thomas Ridley QC Dept.  
8:20 am, 10 Jul 2023

The food information supplied by Thomas Ridley Foodservice has been provided by the respective product manufacturer. Whilst we use reasonable endeavours to check this information and ensure its accuracy, we do not give any warranty (whether express or implied), guarantee or representation that it is true, accurate or complete in any respect.

As product information, ingredients, nutritional guides and dietary or allergy advice may change from time to time, we recommend that you always carefully read the product label prior to using or consuming any such products. You should not solely rely upon the information we provide and make your own assessment as to the suitability or otherwise of any given product.

## Components

### Ingredients

Sugar  
Cocoa Powder  
Acidity Regulator (Potassium Carbonates)  
Flavouring  
Cocoa Solids: 25 % minimum

### Allergy Text

May contain Milk.

### Nutrition

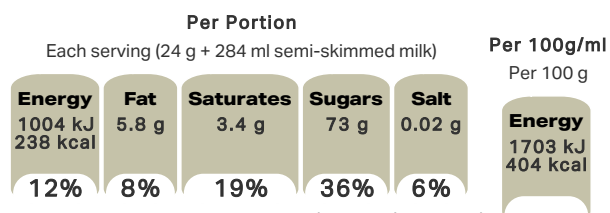
	Per 100 g	Per serving (24 g + 284 ml semi-skimmed milk)	*Reference Intakes
Energy	1703 kJ 404 kcal	1004 kJ 238 kcal	8400 kJ / 2000 kcal
Fat	5.8 g	5.8 g	70 g
of which Saturates	3.4 g	3.8 g	20 g
Carbohydrate	76 g	33 g	260 g
of which Sugars	73 g	33 g	90 g
Fibre	9.3 g	2.4 g	-
Protein	6.4 g	11 g	50 g
Salt	0.02 g	0.35 g	6 g

\*% reference intake of an average adult (8400 kJ / 2000 kcal)

### Calculated Nutrition

	per 100g	Per serving (24 g + 284 ml semi-skimmed milk)
Energy (kJ)	1703	1004
Energy (kcal)	404	238
Fat (g)	5.8	5.8
of which saturates (g)	3.4	3.8
Carbohydrate (g)	76	33
of which sugars (g)	73	33
Fibre (g)	9.3	2.4
Protein (g)	6.4	11
Salt (g)	0.02	0.35

### Front of Pack Nutrition



% reference intake of an average adult (8400 kJ / 2000 kcal)

## Product Description

### Alternative Description

Supplier Preferred Product Name - Cadbury Original Drinking Hot Chocolate Large Tub 2KG

### Brand

Cadbury

### Features

Swirl into milk  
Suitable for vegetarians

### Standardised Brand

Brand - Cadbury

### Regulated Product Name

Drinking chocolate.

## Marketing

### Company Name

Mondelez UK / Mondelez Ireland

### Company Address

Mondelez UK,  
PO Box 7008,  
Birmingham,  
B30 2PT.

Mondelez Ireland,  
Malahide Road,  
Coolock,  
Dublin 5.

### Third Party Logos

- Green Dot

### Product Marketing

Your very own hug in a mug. So wonderfully smooth and deliciously warming, it's our classic hot chocolate! Swirl four teaspoons of Cadbury Drinking Chocolate with hot milk, for the ultimate cosy hot chocolate experience. Made with sustainably sourced cocoa. Vegetarian friendly.

### Manufacturer Marketing

By Appointment to H.M. The Queen Cocoa and Chocolate Manufacturers Cadbury UK Ltd., Bournville.

### Other Information

Made under licence from Cadbury UK Ltd.

### Further Description

Cocoa Life  
Partnering with Fairtrade Foundation  
cocoalife.org

## Health & Lifestyle

### Lifestyle

- Suitable for Vegetarians

### Allergy Advice

Milk - May Contain

## Storage & Usage

### Storage Type

Type
Ambient

### Preparation and Usage

A Simple Guide to Chocolate Heaven

Preparation Instructions (with 284 ml semi-skimmed milk):

Swirl four heaped teaspoons of Cadbury Drinking Chocolate into a mug of hot semi-skimmed milk and stir.

Alternatively, mix the powder with cold semi-skimmed milk in a microwaveable mug and heat in a 800 W microwave on high for 1 min, stir then microwave for a further 30 sec. Stir before drinking.

For a more Indulgent option

1. Add 24 g (1 scoop or 4tsps) of Cadbury Drinking Chocolate to 15 ml of hot water (approx. 75°C) and mix to create a liquid paste.
2. Add the paste (approx. 30 ml) to a 340 ml mug.
3. Steam 180 ml of Semi-Skimmed milk using steam arm in another jug to 65°C to 70°C.
4. Pour the foamed milk into the mug and mix with the paste to create a delicious warming mug of Cadbury Hot Chocolate.

### Storage

Store in a dry place. Protect from heat.

For best before see base.

## Brandbank Captured Pack Data

### Pack Size

2kg e

### Numeric Size

Numeric Size - 2

### Dimension

Shelf Height (mm)	Shelf Width (mm)	Shelf Depth (mm)
192	159	159

### (GS1 package measurement rules)

### Pack Type

Type - Can

### Weight

Gross Weight - 2173

### New Product Development

Final Product - Not NPD

### Unit Merchandising

Height - 192  
Width - 159  
Depth - 159  
Unit Stackable - No  
Unit Stable - Yes  
Merchandise Multiple Ways - No

### Shelf Ready Pack

Height - 193  
Width - 317  
Depth - 483  
Weight - 13165  
Unit Count - 6  
Unit Height - 1  
Unit Width - 2  
Unit Depth - 3  
Merchandise Multiple Ways - Yes  
Prototype - No  
Is Case - No

### Case

GTIN - 05034660514411  
Height - 194  
Width - 318  
Depth - 486  
Weight - 13213  
Unit Count - 6  
Prototype - No

### Recycling Other Text

### Usage Count

Number of uses - Servings

83-84

### Usage Other Text

Approximately 83 - 84 servings per pack

## Customer Services

### Manufacturers Address

Mondelez UK,  
PO Box 7008,  
Birmingham,  
B30 2PT.

Mondelez Ireland,  
Malahide Road,  
Coolock,  
Dublin 5.

### Return To

We are passionate about our great quality Cadbury products. Not completely satisfied? Please contact us:  
Freephone 0800 818181 (UK only)  
Mondelez UK,  
PO Box 7008,  
Birmingham,  
B30 2PT.

Mondelez Ireland,  
Freephone 1-800 678708  
Malahide Road,  
Coolock,  
Dublin 5.  
[www.cadbury.co.uk](http://www.cadbury.co.uk)

### Telephone Helpline

0800 818181 (UK)  
1-800 678708

### Fax Number

### Email Helpline

### Web Address

[www.cadbury.co.uk](http://www.cadbury.co.uk)

### Social Media

## Extended Data

### SEO Metatag

Hot Chocolate, Drinking Chocolate, Cadbury Hot Chocolate, Chocolate Powder, Milk Chocolate, Dairy Milk, Best Way To Make Hot Chocolate, Cadbury Cocoa Powder, Hot Chocolate Powder, Instant Hot Chocolate





