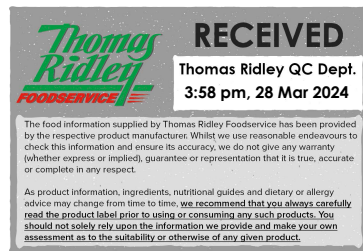


Changed Mar 28, 2024 15:11

Reviewed Mar 28, 2024 15:11

Erudus ID 9027bd7374144aebbf143473a809baaa

Version 2.0



**Thomas Ridley**  
FOODSERVICE

**RECEIVED**  
Thomas Ridley QC Dept.  
3:58 pm, 28 Mar 2024

The food information supplied by Thomas Ridley Foodservice has been provided by the respective product manufacturer. Whilst we use reasonable endeavours to check this information and ensure its accuracy, we do not give any warranty (whether express or implied), guarantee or representation that it is true, accurate or complete in any respect.

As product information, ingredients, nutritional guides and dietary or allergy advice may change from time to time, we recommend that you always carefully read the product label prior to using or consuming any such products. You should not solely rely upon the information we provide and make your own assessment as to the suitability or otherwise of any given product.



08055

# Signature Chicken Stock Reduction (S) 6 x 1ltr

Chicken Stock Reduction 6x1litre

## PRODUCT DESCRIPTION

A golden brown composite jellified reduced stock with a distinctive aroma of chicken, produced by the blending, heating and sterilisation of food ingredients. It has the characteristic appearance and flavour of a chicken stock when heated and used as directed.

Brand	Essential Cuisine Limited
Manufacturer Product Code	SW00251 - ECSCSR
Effective Date	Jun 10, 2021
Product Type	Food
Product Category	Gravy / Bouillon
Storage Type	Ambient
Erudus ID	9027bd7374144aebbf143473a809baaa
Specification Type	Generic



Inner Component GTIN	5029540000948
Outer Case GTIN	05029540000955



## INGREDIENTS

### Ingredient Declaration

Reduced Chicken Stock (made from Water, Meaty Chicken Bones, Onion, Carrot, Rosemary, Thyme, Bay Leaf, Black Pepper).

## ALLERGENS

Product Contains:

<b>Celery/Celeriac</b>	No	<b>Mustard</b>	No
<b>Cereals Containing Gluten</b>	No	<b>Nuts (Tree)</b>	No
<b>Barley</b>	No	<b>Almond nuts</b>	No
<b>Oats</b>	No	<b>Brazil nuts</b>	No
<b>Rye</b>	No	<b>Cashew nuts</b>	No
<b>Wheat (including Spelt and Khorasan)</b>	No	<b>Hazelnuts</b>	No
<b>Crustacea</b>	No	<b>Macadamia (Queensland) nuts</b>	No
<b>Eggs</b>	No	<b>Pecan nuts</b>	No
<b>Fish</b>	No	<b>Pistachio nuts</b>	No
<b>Lupin</b>	No	<b>Walnuts</b>	No
<b>Milk</b>	No	<b>Peanuts</b>	No
<b>Molluscs</b>	No	<b>Sesame Seeds</b>	No
		<b>Soybeans</b>	No
		<b>Sulphur Dioxide and Sulphites</b>	No

## FREE FROM CLAIMS

<b>Gluten-Free</b>	Yes
--------------------	-----

SUPPLEMENTARY  
INGREDIENT  
INFORMATION

<b>Palm Oil</b>	No
<b>Hydrogenated Vegetable Oil/Fat</b>	No
<b>GM Protein/DNA</b>	No

ADDITIVES

*Product Contains:*

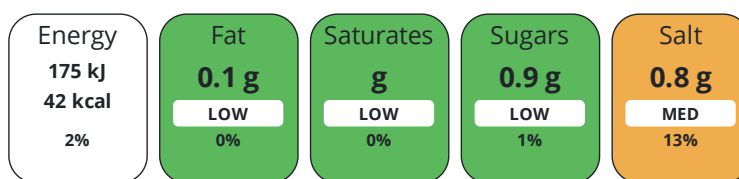
<b>Artificial Antioxidants</b>	No	<b>Artificial Flavourings</b>	No
<b>Artificial Colours</b>	No	<b>Artificial Preservatives</b>	No
<b>Artificial Flavour Enhancers</b>	No	<b>Artificial Sweeteners</b>	No

DIET  
SUITABILITY

<b>Vegan Diet</b>	No	<b>Vegetarian Diet</b>	No
<b>Halal Diet</b>	No	<b>Kosher Diet</b>	No

NUTRITIONAL  
INFORMATION

Each 100g/ml portion contains:



of your reference intake.

Typical values per 100g/ml : Energy 42kcal / 175kj

Nutrient	per 100ml	RI per 100ml
<b>Energy (kJ)</b>	175 kJ	2%
<b>Energy (kcal)</b>	42 kcal	2%
<b>Fat</b>	0.1 g	0%
<b>of which Saturates</b>	0 g	0%
<b>Carbohydrate</b>	0.9 g	0%
<b>of which Sugars</b>	0.9 g	1%
<b>Fibre</b>	0 g	
<b>Protein</b>	9.3 g	19%
<b>Salt</b>	0.8 g	13%

SUPPLEMENTARY  
NUTRITIONAL  
INFORMATION

HANDLING &  
STORAGE  
INFORMATION

**Directions For Use**

Empty the contents of the carton into a suitable pan and cook through.

**Storage Instructions**

Unopened, store in cool, dry, ambient conditions.

**Storage Instructions After Opening**

Once opened, keep refrigerated and use within 3 days.

<b>Shelf Life from Time of Production</b>	730 Days	<b>Exempt From Shelf Life Labelling</b>	No
---	----------	---	----

ACCREDITATIONS/  
CERTIFICATIONS/  
ASSURANCE  
SCHEMES  
ORIGIN

<b>BRCGS Certified</b>	<b>Food for Life Supplier Scheme</b>
------------------------	--------------------------------------

**Product Country of Origin/Place of** Norway

**Provenance**

**Additional Origin Details**

Norway

PRODUCT CHARACTERISTICS	Standards Testing						
	<b>Do you undertake trend analysis of microbiological results?</b>	No	<b>Is shelf life testing undertaken?</b>		No		
CONFIGURATION	Case Configuration		Inner Pack Configuration				
	<b>Total Quantity of Inner Components in Outer Case</b>	6 Units					
	<b>Is the Outer Case Splittable?</b>	Yes					
PRODUCT WEIGHTS	Inner Component						
	<b>Variable Weight Consumer Item</b>	No					
	<b>Inner Component Volume</b>	1 litre					
	Outer Case						
	<b>Outer Case Gross Weight</b>	6.3 kg					
	<b>Outer Case Net Weight</b>	6 kg					
PRODUCT DIMENSIONS	Inner Component						
	<b>Inner Component Depth</b>	70 mm					
	<b>Inner Component Width</b>	70 mm					
	<b>Inner Component Height</b>	197 mm					
	Outer Case						
	<b>Outer Case Depth</b>	224 mm					
	<b>Outer Case Width</b>	160 mm					
	<b>Outer Case Height</b>	203 mm					
	PALLET INFORMATION	<b>Quantity of Cases Per Pallet Layer</b>	24 Cases	<b>Pallet Height</b>		1.1 MTR	
		<b>Quantity of Layers Per Pallet</b>	5 Layers	<b>Pallet Gross Weight</b>		736.6 kg	
<b>Quantity of Cases Per Pallet</b>		120 Cases					
PACKAGING	Outer Case Packaging						
	<b>Type</b>	<b>Materials</b>	<b>Weight</b>	<b>Recycled Plastic %</b>	<b>Recyclable</b>	<b>Returnable</b>	<b>Composite</b>
	Case	Paper/Cardboard	89 g	- %			
	Transport Packaging						
	<b>Type</b>	<b>Materials</b>	<b>Weight</b>	<b>Recycled Plastic %</b>	<b>Recyclable</b>	<b>Returnable</b>	<b>Composite</b>
	Other	Plastic	500 g	- %			
	Other	Paper/Cardboard	500 g	- %			
	Other	Wood	30000 g	- %			
	MARKETING INFORMATION	<b>Marketing Description</b>					
		Made from 100% natural ingredients our Reduced Chicken Stock has a naturally occurring gelatinous sticky mouth feel, with all the attributes of a kitchen-made stock.					
	OTHER INFORMATION	<b>Manufacturer Comments</b>					
		N/A					

CONTACT  
INFORMATION

Address

Essential Cuisine Limited  
Essential Cuisine Ltd  
Browning Way  
Winsford  
Cheshire  
CW7 2RH  
United Kingdom

P. (Phone) 01606 541490

The information on the [Erudus System](#) has been supplied by the manufacturers of the products and, whilst the owners of the Erudus System take steps to ensure the information is regularly updated, they give no warranty and no guarantee that the information is accurate. Product information and ingredients may change, please always read product labels carefully in addition to using the information provided by Erudus.

We do not accept liability for any inaccuracies or incorrect information contained on this site.  
Please visit <http://www.erudus.com/terms-and-conditions> for full terms and conditions.