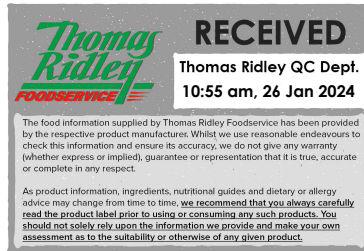


Changed Jan 25, 2024 15:14

Reviewed Jan 25, 2024 15:14

Erudus ID 51010c4b3ef742649831a13f5f39811f

Version 2.0



Rowntree's Fruit Pastilles Vegan Friendly Sweets Tube 32x50g

Rowntree's Fruit Pastilles Sweets Tube 50g 32x50g

PRODUCT DESCRIPTION

Fruit Pastilles

Brand	Nestle UK
Manufacturer Product Code	12454361
Product Type	Food
Product Category	Confectionery
Storage Type	Ambient
Erudus ID	51010c4b3ef742649831a13f5f39811f
Specification Type	Generic
Inner Component GTIN	7613287057020
Outer Case GTIN	7613287057037



INGREDIENTS

Ingredient Declaration

Sugar, Glucose Syrup, Starch, Invert Sugar Syrup, Acids (Malic Acid, Citric Acid, Lactic Acid, Acetic Acid), Concentrated Fruit Juice (1.2%) (Apple, Blackcurrant, Lime, Orange, Strawberry, Lemon), Acidity Regulator (Trisodium Citrate), Flavourings, Colours (Anthocyanins, Copper Complexes of Chlorophyllins, Beta-Carotene, Curcumin)

ALLERGENS

Product Contains:

Celery/Celериac	No	Mustard	No
Cereals Containing Gluten	No	Nuts (Tree)	No
Barley	No	Almond nuts	No
Oats	No	Brazil nuts	No
Rye	No	Cashew nuts	No
Wheat (including Spelt and Khorasan)	No	Hazelnuts	No
Crustacea	No	Macadamia (Queensland) nuts	No
Eggs	No	Pecan nuts	No
Fish	No	Pistachio nuts	No
Lupin	No	Walnuts	No
Milk	No	Peanuts	No
Molluscs	No	Sesame Seeds	No
		Soybeans	No
		Sulphur Dioxide and Sulphites	No

Additional Allergen Information

No Allergens present

SUPPLEMENTARY INGREDIENT INFORMATION

Palm Oil	Yes
Hydrogenated Vegetable Oil/Fat	No
GM Protein/DNA	No

ADDITIVES

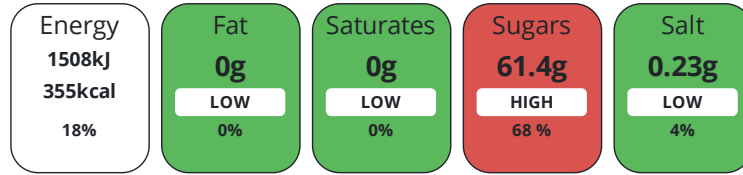
Product Contains:

Artificial Colours	No	Artificial Flavourings	No
Artificial Flavour Enhancers	No	Artificial Preservatives	No
		Artificial Sweeteners	No
Vegan Diet	Suitable for	Vegetarian Diet	Suitable for
Halal Diet	No	Kosher Diet	No

DIET
SUITABILITY

NUTRITIONAL
INFORMATION

Each 100g/ml portion contains:



of your reference intake.

Typical values per 100g/ml : Energy 355kcal / 1508kj

Nutrient	per 100g	RI per 100g
Energy (kj)	1508 kj	18%
Energy (kcal)	355 kcal	18%
Fat	0 g	0%
of which Saturates	0 g	0%
Carbohydrate	88.6 g	34%
of which Sugars	61.4 g	68%
Fibre	0 g	
Protein	0.1 g	0%
Salt	0.23 g	4%

Serving Size Description 7 sweets

Source of Nutritional Information Calculation based on known values of ingredients

SUPPLEMENTARY
NUTRITIONAL
INFORMATION

HANDLING &
STORAGE
INFORMATION

Directions For Use

Ready To Eat

Storage Instructions

Store cool and dry

Shelf Life from Time of Production 243 Days

Exempt From Shelf Life Labelling No

ACCREDITATIONS/
CERTIFICATIONS/
ASSURANCE
SCHEMES



ORIGIN

Product Country of Origin/Place of United Kingdom

Provenance

PRODUCT
CHARACTERISTICS

Standards Testing

Do you undertake trend analysis of microbiological results? No

Is shelf life testing undertaken? No

CONFIGURATION	Case Configuration		Inner Pack Configuration				
	Total Quantity of Inner Components in Outer Case	32 Units					
	Is the Outer Case Splittable?	No					
PRODUCT WEIGHTS	Inner Component						
	Variable Weight Consumer Item	No					
	Inner Component Weight	50 g					
	Outer Case						
	Outer Case Gross Weight	1.75 kg					
	Outer Case Net Weight	1.6 kg					
PRODUCT DIMENSIONS	Inner Component						
	Inner Component Depth	20 mm					
	Inner Component Width	135 mm					
	Inner Component Height	20 mm					
	Outer Case						
	Outer Case Depth	191 mm					
	Outer Case Width	141 mm					
PALLET INFORMATION	Quantity of Cases Per Pallet Layer	43 Cases	Pallet Height	1.22 MTR			
	Quantity of Layers Per Pallet	12 Layers	Pallet Gross Weight	933 kg			
	Quantity of Cases Per Pallet	516 Cases					
PACKAGING	Inner Component Packaging						
	Type	Materials	Weight	Recycled Plastic %	Recyclable	Returnable	Composite
	Foil	Paper/Cardboard	0.7 g	- %			
	Foil	Aluminium	0.38 g	- %			
	Outer Case Packaging						
	Type	Materials	Weight	Recycled Plastic %	Recyclable	Returnable	Composite
	Case	Paper/Cardboard	96 g	- %			
	Transport Packaging						
	Type	Materials	Weight	Recycled Plastic %	Recyclable	Returnable	Composite
	Other	Plastic	294 g	- %			
	Other	Paper/Cardboard	5 g	- %			
	Other	Wood	29000 g	- %			
	MARKETING INFORMATION	Marketing Description					
		Every paper tube contains a mixture of five fantastic flavours: blackcurrant, lemon, strawberry, lime, and orange. Still irresistibly chewy and now vegan friendly for even more people to enjoy! No artificial colours, flavours or preservatives					
OTHER INFORMATION	Intrastat/Taric Code	1704906500					
	Commodity Code	1704906500					

CONTACT
INFORMATION

Address

Nestle UK
Nestlé UK Ltd
Haxby Road
York
YO31 8TA1
England

Technical Contact

Helen Brewer
Technical Data Co-ordinator

P: (Phone) 0800 00 00 30

The information on the [Erudus System](#) has been supplied by the manufacturers of the products and, whilst the owners of the Erudus System take steps to ensure the information is regularly updated, they give no warranty and no guarantee that the information is accurate. Product information and ingredients may change, please always read product labels carefully in addition to using the information provided by Erudus.

We do not accept liability for any inaccuracies or incorrect information contained on this site.

Please visit <http://www.erudus.com/terms-and-conditions> for full terms and conditions.