

Changed Jun 21, 2023 13:34

Erudus ID bad216fea49f43f189dfdc7da753887e

Version 1.0

08068

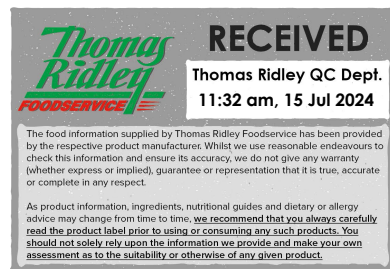
# SAVOURSMITHS TRUFFLE AND ROSEMARY FLAVOUR POTATO CRISPS

Truffle And Rosemary 24x40g

## PRODUCT DESCRIPTION

SAVOURSMITHS TRUFFLE AND ROSEMARY FLAVOUR POTATO CRISPS 40g

Brand	Savoursmiths Ltd
Manufacturer Product Code	SSTR1
Product Type	Food
Product Category	Crisps & Snacks
Storage Type	Ambient
Erudus ID	bad216fea49f43f189dfdc7da753887e
Specification Type	Legacy



Inner Component GTIN	0643131511948
Outer Case GTIN	5060657220171



## INGREDIENTS

### Ingredient Declaration

Potatoes, sunflower oil, truffle and rosemary flavour (rice flour, mushroom extract, salt, sugar, onion, yeast extract, garlic powder, natural flavouring, rosemary, thyme, parsley, acidity regulator: citric acid, white pepper, black truffle powder)  
See Allergens in Bold.

## ALLERGENS

Product Contains:

<b>Celery/Celeriac</b>	No	<b>Mustard</b>	No
<b>Cereals Containing Gluten</b>	No	<b>Nuts (Tree)</b>	No
<b>Barley</b>	No	<b>Almond nuts</b>	No
<b>Oats</b>	No	<b>Brazil nuts</b>	No
<b>Rye</b>	No	<b>Cashew nuts</b>	No
<b>Wheat (including Spelt and Khorasan)</b>	No	<b>Hazelnuts</b>	No
<b>Gluten content &lt;20ppm</b>	No	<b>Macadamia (Queensland) nuts</b>	No
<b>Crustacea</b>	No	<b>Pecan nuts</b>	No
<b>Eggs</b>	No	<b>Pistachio nuts</b>	No
<b>Fish</b>	No	<b>Walnuts</b>	No
<b>Lupin</b>	No	<b>Peanuts</b>	No
<b>Milk</b>	No	<b>Sesame Seeds</b>	No
<b>Molluscs</b>	No	<b>Soybeans</b>	No
		<b>Sulphur Dioxide and Sulphites</b>	No

### Additional Allergen Information

No Allergens. Please see allergens in bold.

SUPPLEMENTARY  
INGREDIENT  
INFORMATION

<b>Palm Oil</b>	No
<b>Hydrogenated Vegetable Oil/Fat</b>	Yes
<b>GM Protein/DNA</b>	No

ADDITIVES

Product Contains:

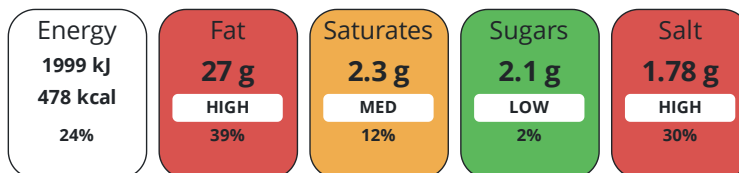
<b>Artificial Antioxidants</b>	No	<b>Artificial Flavourings</b>	No
<b>Artificial Colours</b>	No	<b>Artificial Preservatives</b>	No
<b>Artificial Flavour Enhancers</b>	No	<b>Artificial Sweeteners</b>	No

DIET  
SUITABILITY

<b>Suitable for Coeliacs</b>	No	<b>Halal Diet</b>	Suitable for
<b>Kosher Diet</b>	Suitable for	<b>Vegetarian Diet</b>	Suitable for
<b>Vegan Diet</b>	No		

NUTRITIONAL  
INFORMATION

Each 100g/ml portion contains:



of your reference intake.

Typical values per 100g/ml : Energy 478kcal / 1999kj

Nutrient	per 100g/ml	RI per 100g/ml	per 40g/ml serving	RI per 40g/ml serving
<b>Energy (kJ)</b>	1999 kJ	24%	799.6 kJ	10%
<b>Energy (kcal)</b>	478 kcal	24%	191.2 kcal	10%
<b>Fat</b>	27 g	39%	10.8 g	15%
of which Saturates	2.3 g	12%	0.9 g	5%
<b>Carbohydrate</b>	53 g	20%	21.2 g	8%
of which Sugars	2.1 g	2%	0.8 g	1%
<b>Fibre</b>	4.5 g		1.8 g	
<b>Protein</b>	6.7 g	13%	2.7 g	5%
<b>Salt</b>	1.78 g	30%	0.7 g	12%
<b>Serving Size</b>	40 g			

SUPPLEMENTARY  
NUTRITIONAL  
INFORMATION

HANDLING &  
STORAGE  
INFORMATION

**Directions For Use**

Ready to go

**Storage Instructions**

Ambient

**Shelf Life from Time of Production** 270 Days

ACCREDITATIONS/  
CERTIFICATIONS/  
ASSURANCE  
SCHEMES  
ORIGIN

**BRCGS Certified**

**LEAF Marque (Linking Environment and Farming)**

**Product Country of Origin/Place of** United Kingdom

**Provenance**

PRODUCT  
CHARACTERISTICS

Standards Testing

	<b>Do you undertake trend analysis of microbiological results?</b>	No	<b>Is shelf life testing undertaken?</b>	No
CONFIGURATION	Case Configuration		Inner Pack Configuration	
	<b>Total Quantity of Inner Components in Outer Case</b>	24 Units		
PRODUCT WEIGHTS	Inner Component			
	<b>Variable Weight Consumer Item</b>	No		
	<b>Inner Component Weight</b>	40 g		
	Outer Case			
	<b>Outer Case Gross Weight</b>	0.04 kg		
	<b>Outer Case Net Weight</b>	0.02 kg		
PRODUCT DIMENSIONS	Inner Component			
	<b>Inner Component Depth</b>	3 mm		
	<b>Inner Component Width</b>	14 mm		
	<b>Inner Component Height</b>	21 mm		
	Outer Case			
	<b>Outer Case Depth</b>	290 mm		
	<b>Outer Case Width</b>	380 mm		
	<b>Outer Case Height</b>	210 mm		
PALLET INFORMATION	<b>Quantity of Cases Per Pallet Layer</b>	100 Cases	<b>Pallet Height</b>	2.1 MTR
	<b>Quantity of Layers Per Pallet</b>	10 Layers	<b>Pallet Gross Weight</b>	2.1 kg
	<b>Quantity of Cases Per Pallet</b>	10 Cases		
PACKAGING	Inner Component Packaging			
	<b>Type</b>	<b>Materials</b>	<b>Weight</b>	<b>Recycled Plastic %</b>
		<b>Recyclable</b>	<b>Returnable</b>	<b>Composite</b>
	Poly Treated PET/PE	Plastic	4 g	100.00 %
OTHER INFORMATION	<b>Commodity Code</b>	2005202000		
CONTACT INFORMATION	Address			
	Savoursmiths Ltd			
	College Farm			
	Grange Road			
	Duxford			
	CB22 4QF			
	United Kingdom			
	P: (Phone) 07767623265			

The information on the [Erudus System](#) has been supplied by the manufacturers of the products and, whilst the owners of the Erudus System take steps to ensure the information is regularly updated, they give no warranty and no guarantee that the information is accurate. Product information and ingredients may change, please always read product labels carefully in addition to using the information provided by Erudus.

We do not accept liability for any inaccuracies or incorrect information contained on this site. Please visit <http://www.erudus.com/terms-and-conditions> for full terms and conditions.