

Changed Jun 21, 2023 13:32

Erudus ID c740b9af487848f6b792ec226746b0ab

Version 1.0

08069

SAVOURSMITHS ITALIAN CHEESE AND WINE FLAVOUR POTATO CRISPS 40G

Savoursmiths Italian Cheese And Wine Flavour Potato Crisps 24x40g

PRODUCT DESCRIPTION

SAVOURSMITHS ITALIAN CHEESE AND WINE FLAVOUR POTATO CRISPS

Brand	Savoursmiths Ltd
Manufacturer Product Code	SSICW1
Product Type	Food
Product Category	Crisps & Snacks
Storage Type	Ambient
Erudus ID	c740b9af487848f6b792ec226746b0ab
Specification Type	Legacy



Inner Component GTIN 0643131511931

Outer Case GTIN 5060657220157



INGREDIENTS

Ingredient Declaration

Potatoes, sunflower oil, Italian cheese and wine flavour (lactose (**MILK**), yeast extract powder, natural flavouring (contains **MILK**), blackcurrant juice powder, sugar, potato maltodextrin, salt, sea salt, skimmed **MILK** powder, spirit vinegar powder, cheese powder (**MILK**), acidity regulator (citric acid), garlic powder, spice (white pepper), anti-caking agent (silicon dioxide), parmesan cheese powder (**MILK**), ruby port)

This flavour is **MSG** Free and Gluten Free but contains Milk.

ALLERGENS

Product Contains:

Celery/Celeriac	No	Mustard	No
Cereals Containing Gluten	No	Nuts (Tree)	No
Barley	No	Almond nuts	No
Oats	No	Brazil nuts	No
Rye	No	Cashew nuts	No
Wheat (including Spelt and Khorasan)	No	Hazelnuts	No
Gluten content <20ppm	No	Macadamia (Queensland) nuts	No
Crustacea	No	Pecan nuts	No
Eggs	No	Pistachio nuts	No
Fish	No	Walnuts	No
Lupin	No	Peanuts	No
Milk	Yes	Sesame Seeds	No
Molluscs	No	Soybeans	No
		Sulphur Dioxide and Sulphites	No

Additional Allergen Information

MILK. Please see allergens in bold.

RECEIVED

Thomas Ridley QC Dept.

10:20 am, 2 Apr 2024

The food information supplied by Thomas Ridley Foodservice has been provided by the respective product manufacturer. Whilst we use reasonable endeavours to check this information and ensure its accuracy, we do not give any warranty (whether express or implied), guarantee or representation that it is true, accurate or complete in any respect.

As product information, ingredients, nutritional guides and dietary or allergy advice may change from time to time, we recommend that you always carefully read the product label prior to using or consuming any such products. You should not solely rely upon the information we provide and make your own assessment as to the suitability or otherwise of any given product.



SUPPLEMENTARY
INGREDIENT
INFORMATION

Palm Oil	No
Hydrogenated Vegetable Oil/Fat	Yes
GM Protein/DNA	No

ADDITIVES

Product Contains:

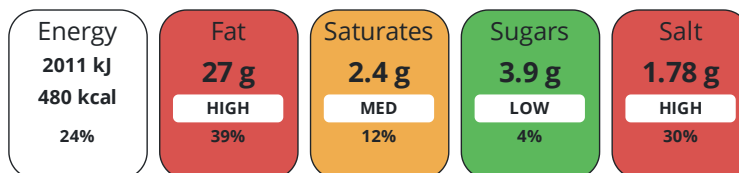
Artificial Antioxidants	No	Artificial Flavourings	No
Artificial Colours	No	Artificial Preservatives	No
Artificial Flavour Enhancers	No	Artificial Sweeteners	No

DIET
SUITABILITY

Suitable for Coeliacs	No	Halal Diet	Suitable for
Kosher Diet	Suitable for	Vegetarian Diet	No
Vegan Diet	No		

NUTRITIONAL
INFORMATION

Each 100g/ml portion contains:



of your reference intake.

Typical values per 100g/ml : Energy 480kcal / 2011kJ

Nutrient	per 100g/ml	RI per 100g/ml	per 40g/ml serving	RI per 40g/ml serving
Energy (kJ)	2011 kJ	24%	804.4 kJ	10%
Energy (kcal)	480 kcal	24%	192 kcal	10%
Fat	27 g	39%	10.8 g	15%
of which Saturates	2.4 g	12%	1 g	5%
Carbohydrate	53 g	20%	21.2 g	8%
of which Sugars	3.9 g	4%	1.6 g	2%
Fibre	4.2 g		1.7 g	
Protein	6.9 g	14%	2.8 g	6%
Salt	1.78 g	30%	0.7 g	12%
Serving Size	40 g			

SUPPLEMENTARY
NUTRITIONAL
INFORMATION

HANDLING &
STORAGE
INFORMATION

Directions For Use
Ready to go

Storage Instructions
Ambient

Shelf Life from Time of Production 270 Days

ACCREDITATIONS/
CERTIFICATIONS/
ASSURANCE
SCHEMES
ORIGIN

BRCGS Certified	LEAF Marque (Linking Environment and Farming)
Product Country of Origin/Place of Provenance	United Kingdom

PRODUCT
CHARACTERISTICS

Standards Testing

	Do you undertake trend analysis of microbiological results?	No	Is shelf life testing undertaken?	No			
CONFIGURATION	Case Configuration		Inner Pack Configuration				
	Total Quantity of Inner Components in Outer Case	24 Units					
PRODUCT WEIGHTS	Inner Component						
	Variable Weight Consumer Item	No					
	Inner Component Weight	40 g					
	Outer Case						
	Outer Case Gross Weight	0.04 kg					
	Outer Case Net Weight	0.02 kg					
PRODUCT DIMENSIONS	Inner Component						
	Inner Component Depth	3 mm					
	Inner Component Width	14 mm					
	Inner Component Height	21 mm					
	Outer Case						
	Outer Case Depth	290 mm					
	Outer Case Width	380 mm					
	Outer Case Height	210 mm					
PALLET INFORMATION	Quantity of Cases Per Pallet Layer	100 Cases	Pallet Height	2.1 MTR			
	Quantity of Layers Per Pallet	10 Layers	Pallet Gross Weight	2.1 kg			
	Quantity of Cases Per Pallet	10 Cases					
PACKAGING	Inner Component Packaging						
	Type	Materials	Weight	Recycled Plastic %	Recyclable	Returnable	Composite
	Poly Treated PET/PE	Plastic	4 g	100.00 %			
OTHER INFORMATION	Commodity Code	2005202000					
CONTACT INFORMATION	Address						
	Savoursmiths Ltd						
	College Farm						
	Grange Road						
	Duxford						
	CB22 4QF						
	United Kingdom						
	P: (Phone) 07767623265						

The information on the [Erudus System](#) has been supplied by the manufacturers of the products and, whilst the owners of the Erudus System take steps to ensure the information is regularly updated, they give no warranty and no guarantee that the information is accurate. Product information and ingredients may change, please always read product labels carefully in addition to using the information provided by Erudus.

We do not accept liability for any inaccuracies or incorrect information contained on this site. Please visit <http://www.erudus.com/terms-and-conditions> for full terms and conditions.