


Changed Mar 08, 2024 15:44


Reviewed Mar 08, 2024 15:44

Erudus ID d836c413b3074370b9046216d6895bb3

Version 4.1



Thomas Ridley QC Dept.  
8:42 am, 2 Apr 2024



United around food data

The food information supplied by Thomas Ridley Foodservice has been provided by the respective product manufacturer. Whilst we use reasonable endeavours to check this information and ensure its accuracy, we do not give any warranty (whether express or implied), guarantee or representation that it is true, accurate or complete in any respect.

As product information, ingredients, nutritional guides and dietary or allergy advice may change from time to time, we recommend that you always carefully read the product label prior to using or consuming any such products. You should not solely rely upon the information we provide and make your own assessment as to the suitability or otherwise of any given product.

08070

# SAVOURSMITHS WAGYU BEEF AND HONEY MUSTARD FLAVOUR POTATO CRISPS 40g

Savoursmiths Wagyu Beef And Honey Mustard Flavour Potato Crisps 24x40g

## PRODUCT DESCRIPTION

SAVOURSMITHS WAGYU BEEF AND HONEY MUSTARD FLAVOUR POTATO CRISPS 40g

|                           |                                  |
|---------------------------|----------------------------------|
| Brand                     | Savoursmiths Ltd                 |
| Manufacturer Product Code | SSWBHM1                          |
| Product Type              | Food                             |
| Product Category          | Crisps & Snacks                  |
| Storage Type              | Ambient                          |
| Erudus ID                 | d836c413b3074370b9046216d6895bb3 |
| Specification Type        | Generic                          |



|                      |               |
|----------------------|---------------|
| Inner Component GTIN | 0643131511917 |
| Outer Case GTIN      | 5060657220164 |

## INGREDIENTS

### Ingredient Declaration

Potatoes, sunflower oil, yeast extract powder, rice flour, sugar, salt, onion powder, natural flavouring, garlic powder, lemon juice powder, anti-caking agent (silicon dioxide), acidity regulator (citric acid), smoked sugar, wagyu beef extract powder, spice (star anise, pimento, cinnamon), honey powder.

## ALLERGENS

Product Contains:

|                                             |    |                                      |    |
|---------------------------------------------|----|--------------------------------------|----|
| <b>Celery/Celery</b>                        | No | <b>Mustard</b>                       | No |
| <b>Cereals Containing Gluten</b>            | No | <b>Nuts (Tree)</b>                   | No |
| <b>Barley</b>                               | No | <b>Almond nuts</b>                   | No |
| <b>Oats</b>                                 | No | <b>Brazil nuts</b>                   | No |
| <b>Rye</b>                                  | No | <b>Cashew nuts</b>                   | No |
| <b>Wheat (including Spelt and Khorasan)</b> | No | <b>Hazelnuts</b>                     | No |
| <b>Crustacea</b>                            | No | <b>Macadamia (Queensland) nuts</b>   | No |
| <b>Eggs</b>                                 | No | <b>Pecan nuts</b>                    | No |
| <b>Fish</b>                                 | No | <b>Pistachio nuts</b>                | No |
| <b>Lupin</b>                                | No | <b>Walnuts</b>                       | No |
| <b>Milk</b>                                 | No | <b>Peanuts</b>                       | No |
| <b>Molluscs</b>                             | No | <b>Sesame Seeds</b>                  | No |
|                                             |    | <b>Soybeans</b>                      | No |
|                                             |    | <b>Sulphur Dioxide and Sulphites</b> | No |

## SUPPLEMENTARY INGREDIENT INFORMATION

|                                       |     |
|---------------------------------------|-----|
| <b>Palm Oil</b>                       | No  |
| <b>Hydrogenated Vegetable Oil/Fat</b> | Yes |
| <b>GM Protein/DNA</b>                 | No  |

ADDITIVES

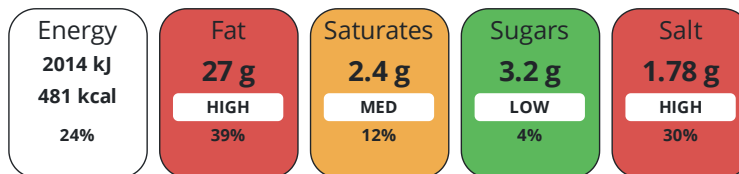
Product Contains:

|                                     |    |                                 |    |
|-------------------------------------|----|---------------------------------|----|
| <b>Artificial Antioxidants</b>      | No | <b>Artificial Flavourings</b>   | No |
| <b>Artificial Colours</b>           | No | <b>Artificial Preservatives</b> | No |
| <b>Artificial Flavour Enhancers</b> | No | <b>Artificial Sweeteners</b>    | No |
| <b>Vegan Diet</b>                   | No | <b>Vegetarian Diet</b>          | No |
| <b>Halal Diet</b>                   | No | <b>Kosher Diet</b>              | No |

DIET SUITABILITY

NUTRITIONAL INFORMATION

Each 100g/ml portion contains:



of your reference intake.

Typical values per 100g/ml : Energy 481kcal / 2014kJ

| Nutrient                  | per 100g | RI per 100g | per 40g serving | RI per 40g serving |
|---------------------------|----------|-------------|-----------------|--------------------|
| <b>Energy (kJ)</b>        | 2014 kJ  | 24%         | 805.6 kJ        | 10%                |
| <b>Energy (kcal)</b>      | 481 kcal | 24%         | 192.4 kcal      | 10%                |
| <b>Fat</b>                | 27 g     | 39%         | 10.8 g          | 15%                |
| <b>of which Saturates</b> | 2.4 g    | 12%         | 1 g             | 5%                 |
| <b>Carbohydrate</b>       | 53 g     | 20%         | 21.2 g          | 8%                 |
| <b>of which Sugars</b>    | 3.2 g    | 4%          | 1.3 g           | 1%                 |
| <b>Fibre</b>              | 4.2 g    |             | 1.7 g           |                    |
| <b>Protein</b>            | 7 g      | 14%         | 2.8 g           | 6%                 |
| <b>Salt</b>               | 1.78 g   | 30%         | 0.7 g           | 12%                |

**Serving Size** 40 g

SUPPLEMENTARY NUTRITIONAL INFORMATION

HANDLING & STORAGE INFORMATION

**Directions For Use**

Ready to go

**Storage Instructions**

Ambient

**Shelf Life from Time of Production** 270 Days **Exempt From Shelf Life Labelling** No

**BRCGS Certified** **LEAF Marque (Linking Environment and Farming)**

ACCREDITATIONS/ CERTIFICATIONS/ ASSURANCE SCHEMES ORIGIN

**Product Country of Origin/Place of Provenance** United Kingdom

PRODUCT CHARACTERISTICS

Standards Testing

**Do you undertake trend analysis of microbiological results?** No **Is shelf life testing undertaken?** No

CONFIGURATION

Case Configuration Inner Pack Configuration

**Total Quantity of Inner Components in Outer Case** 24 Units

|                        |                                           |                  |               |                           |                   |                            |                  |         |
|------------------------|-------------------------------------------|------------------|---------------|---------------------------|-------------------|----------------------------|------------------|---------|
| PRODUCT WEIGHTS        | Inner Component                           |                  |               |                           |                   |                            |                  |         |
|                        | <b>Variable Weight Consumer Item</b>      |                  | No            |                           |                   |                            |                  |         |
|                        | <b>Inner Component Weight</b>             |                  | 40 g          |                           |                   |                            |                  |         |
|                        | Outer Case                                |                  |               |                           |                   |                            |                  |         |
|                        | <b>Outer Case Gross Weight</b>            |                  | 1.3 kg        |                           |                   |                            |                  |         |
| PRODUCT DIMENSIONS     | <b>Outer Case Net Weight</b>              |                  | 1 kg          |                           |                   |                            |                  |         |
|                        | Inner Component                           |                  |               |                           |                   |                            |                  |         |
|                        | <b>Inner Component Depth</b>              |                  | 30 mm         |                           |                   |                            |                  |         |
|                        | <b>Inner Component Width</b>              |                  | 140 mm        |                           |                   |                            |                  |         |
|                        | <b>Inner Component Height</b>             |                  | 210 mm        |                           |                   |                            |                  |         |
|                        | Outer Case                                |                  |               |                           |                   |                            |                  |         |
|                        | <b>Outer Case Depth</b>                   |                  | 290 mm        |                           |                   |                            |                  |         |
| PALLET INFORMATION     | <b>Outer Case Width</b>                   |                  | 380 mm        |                           |                   |                            |                  |         |
|                        | <b>Outer Case Height</b>                  |                  | 210 mm        |                           |                   |                            |                  |         |
|                        | <b>Quantity of Cases Per Pallet Layer</b> |                  |               | 100 Cases                 |                   | <b>Pallet Height</b>       |                  | 2.1 MTR |
|                        | <b>Quantity of Layers Per Pallet</b>      |                  |               | 10 Layers                 |                   | <b>Pallet Gross Weight</b> |                  | 130 kg  |
|                        | <b>Quantity of Cases Per Pallet</b>       |                  |               | 10 Cases                  |                   |                            |                  |         |
| PACKAGING              | Inner Component Packaging                 |                  |               |                           |                   |                            |                  |         |
|                        | <b>Type</b>                               | <b>Materials</b> | <b>Weight</b> | <b>Recycled Plastic %</b> | <b>Recyclable</b> | <b>Returnable</b>          | <b>Composite</b> |         |
|                        | Poly Treated PET/PE                       | Plastic          | 4 g           | 100.00 %                  |                   |                            |                  |         |
| OTHER INFORMATION      | <b>Commodity Code</b>                     |                  | 2005202000    |                           |                   |                            |                  |         |
| CONTACT INFORMATION    | Address                                   |                  |               |                           |                   |                            |                  |         |
|                        | Savoursmiths Ltd                          |                  |               |                           |                   |                            |                  |         |
|                        | College Farm                              |                  |               |                           |                   |                            |                  |         |
|                        | Grange Road                               |                  |               |                           |                   |                            |                  |         |
|                        | Duxford                                   |                  |               |                           |                   |                            |                  |         |
|                        | CB22 4QF                                  |                  |               |                           |                   |                            |                  |         |
| United Kingdom         |                                           |                  |               |                           |                   |                            |                  |         |
| P: (Phone) 07767623265 |                                           |                  |               |                           |                   |                            |                  |         |

The information on the [Erudus System](#) has been supplied by the manufacturers of the products and, whilst the owners of the Erudus System take steps to ensure the information is regularly updated, they give no warranty and no guarantee that the information is accurate. Product information and ingredients may change, please always read product labels carefully in addition to using the information provided by Erudus.

We do not accept liability for any inaccuracies or incorrect information contained on this site.  
Please visit <http://www.erudus.com/terms-and-conditions> for full terms and conditions.