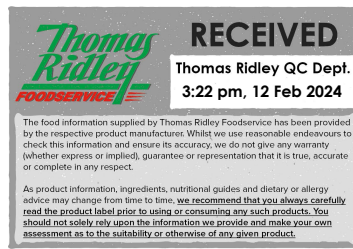


Changed Feb 12, 2024 13:41

Reviewed Feb 12, 2024 13:41

Erudus ID 3883d5ba514f41eb9a39dc8d1a3f53ec

Version 2.0



Ambrosia Rice Pudding pot 120g

Rice Pudding 6x120g

PRODUCT DESCRIPTION

Rice Pudding

Brand	Ambrosia
Manufacturer Product Code	1005023
Product Type	Food
Product Category	Desserts
Storage Type	Ambient
Erudus ID	3883d5ba514f41eb9a39dc8d1a3f53ec
Specification Type	Generic
Inner Component GTIN	50126866
Outer Case GTIN	05000117802059



INGREDIENTS

Ingredient Declaration

Full Cream **Milk**, Skimmed **Milk**, Whey (**Milk**), Rice (9%), Sugar.

Total Milk Content 72%.

ALLERGENS

Product Contains:

Celery/Celeriac	No	Mustard	No
Cereals Containing Gluten	No	Nuts (Tree)	No
Barley	No	Almond nuts	No
Oats	No	Brazil nuts	No
Rye	No	Cashew nuts	No
Wheat (including Spelt and Khorasan)	No	Hazelnuts	No
Crustacea	No	Macadamia (Queensland) nuts	No
Eggs	No	Pecan nuts	No
Fish	No	Pistachio nuts	No
Lupin	No	Walnuts	No
Milk	Yes	Peanuts	No
Molluscs	No	Sesame Seeds	No
		Soybeans	No
		Sulphur Dioxide and Sulphites	No

Allergen Statement On Pack

For allergens, see ingredients in bold.

SUPPLEMENTARY INGREDIENT INFORMATION

Palm Oil	No
Hydrogenated Vegetable Oil/Fat	No
GM Protein/DNA	No

ADDITIVES

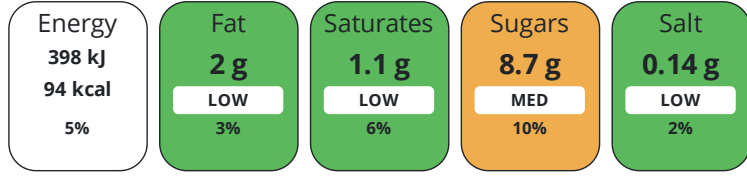
Product Contains:

Artificial Antioxidants	No	Artificial Flavourings	No
Artificial Colours	No	Artificial Preservatives	No
Artificial Flavour Enhancers	No	Artificial Sweeteners	No
Vegan Diet	No	Vegetarian Diet	Suitable for
Halal Diet	No	Kosher Diet	No

DIET SUITABILITY

NUTRITIONAL INFORMATION

Each 100g/ml portion contains:



of your reference intake.

Typical values per 100g/ml : Energy 94kcal / 398kJ

Nutrient	per 100g	RI per 100g	per 120g serving	RI per 120g serving
Energy (kJ)	398 kJ	5%	477.6 kJ	6%
Energy (kcal)	94 kcal	5%	112.8 kcal	6%
Fat	2 g	3%	2.4 g	3%
of which Saturates	1.1 g	6%	1.3 g	7%
Carbohydrate	15.9 g	6%	19.1 g	7%
of which Sugars	8.7 g	10%	10.4 g	12%
Fibre	< 0.5 g		0.6 g	
Protein	3.1 g	6%	3.7 g	7%
Salt	0.14 g	2%	0.2 g	3%
Serving Size	120 g			

SUPPLEMENTARY NUTRITIONAL INFORMATION

HFSS (HIGH IN FAT, SALT AND SUGAR) HANDLING & STORAGE INFORMATION

HFSS Status	No
Directions For Use	Tastes delicious hot or cold... If microwaving carefully remove the entire foil lid. Heat on full power for 30 seconds. Leave to stand for 1 minute and stir before eating. (800 watt/Cat E microwave).
Storage Instructions	Store in a cool, dry place
Shelf Life from Time of Production	270 Days
Exempt From Shelf Life Labelling	No

ACCREDITATIONS/ CERTIFICATIONS/ ASSURANCE SCHEMES



ORIGIN

Product Country of Origin/Place of Provenance United Kingdom

PRODUCT CHARACTERISTICS

Standards Testing

	Do you undertake trend analysis of microbiological results?	No	Is shelf life testing undertaken?	Yes			
CONFIGURATION	Case Configuration		Inner Pack Configuration				
	Total Quantity of Inner Components in Outer Case	6 Units					
	Is the Outer Case Splittable?	Yes					
PRODUCT WEIGHTS	Inner Component						
	Variable Weight Consumer Item	No					
	Inner Component Weight	120 g					
	e mark	Yes					
	Outer Case						
	Outer Case Gross Weight	0.76 kg					
	Outer Case Net Weight	0.72 kg					
PRODUCT DIMENSIONS	Inner Component						
	Inner Component Depth	71 mm					
	Inner Component Width	71 mm					
	Inner Component Height	57 mm					
	Outer Case						
	Outer Case Depth	220 mm					
	Outer Case Width	145 mm					
	Outer Case Height	59 mm					
PALLET INFORMATION	Quantity of Cases Per Pallet Layer	37 Cases	Pallet Height	1 MTR			
	Quantity of Layers Per Pallet	15 Layers	Pallet Gross Weight	446 kg			
	Quantity of Cases Per Pallet	555 Cases					
PACKAGING	Inner Component Packaging						
	Type	Materials	Weight	Recycled Plastic %	Recyclable	Returnable	Composite
	Pot	Plastic	4.7 g	- %			
	Pot	Aluminium	0.48 g	- %			
	Outer Case Packaging						
	Type	Materials	Weight	Recycled Plastic %	Recyclable	Returnable	Composite
	Case	Plastic	6 g	- %			
	Case	Paper/Cardboard	19.2 g	- %			
	Transport Packaging						
	Type	Materials	Weight	Recycled Plastic %	Recyclable	Returnable	Composite
	Pallet Wrap	Plastic	150 g	- %		Yes	
	Pallet	Wood	30000 g	- %		Yes	
OTHER INFORMATION					Identification/Health Marks	GB DE002	
	Manufacturer Comments						
	N/A						

CONTACT
INFORMATION

Address

Premier Foods
Premier Foods, Premier House
Centrium Business Park, Griffiths Way
St Albans
AL1 2RE
England

P. (Phone) 01727 815850

Complaints Contact

Consumer Relations Team
Customer Care
LCescalations@premierfoods.co.uk

Technical Contact

Nicola Ratcliffe
Business Unit Coordinator
nicola.ratcliffe@premierfoods.co.uk

The information on the [Erudus System](#) has been supplied by the manufacturers of the products and, whilst the owners of the Erudus System take steps to ensure the information is regularly updated, they give no warranty and no guarantee that the information is accurate. Product information and ingredients may change, please always read product labels carefully in addition to using the information provided by Erudus.

We do not accept liability for any inaccuracies or incorrect information contained on this site.
Please visit <http://www.erudus.com/terms-and-conditions> for full terms and conditions.