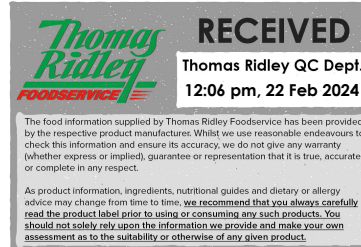


Changed Feb 19, 2024 14:26

Reviewed Feb 19, 2024 14:26

Erudus ID 6dcab62f0c114167baae5db5416b27ac

Version 2.0



08144

CADBURY SGL CREME EGG 48CA

Cad 40g Creme Egg Ea 48x40g

PRODUCT DESCRIPTION

Milk chocolate egg with a soft fondant centre (47 %).

Brand	Cadbury UK Limited
Manufacturer Product Code	611477
Product Type	Food
Product Category	Confectionery
Storage Type	Ambient
Erudus ID	6dcab62f0c114167baae5db5416b27ac
Specification Type	Generic
Inner Component GTIN	50201600
Outer Case GTIN	5000201010247



INGREDIENTS

Ingredient Declaration

Sugar, MILK, glucose syrup, cocoa butter, invert sugar syrup, whey powder (from MILK), cocoa mass, vegetable fats (palm, shea), emulsifier (E442), dried EGG white, flavourings, colour (paprika extract).

Ingredient Statements

MILK CHOCOLATE: MILK SOLIDS 14 % MINIMUM. CONTAINS VEGETABLE FATS IN ADDITION TO COCOA BUTTER.

ALLERGENS

Product Contains:

Celery/Celeryiac	No	Mustard	No
Cereals Containing Gluten	No	Nuts (Tree)	No
Barley	No	Almond nuts	No
Oats	No	Brazil nuts	No
Rye	No	Cashew nuts	No
Wheat (including Spelt and Khorasan)	No	Hazelnuts	No
Crustacea	No	Macadamia (Queensland) nuts	No
Eggs	Yes	Pecan nuts	No
Fish	No	Pistachio nuts	No
Lupin	No	Walnuts	No
Milk	Yes	Peanuts	No
Molluscs	No	Sesame Seeds	No
		Soybeans	No
		Sulphur Dioxide and Sulphites	No

Allergen Statement On Pack

Contains milk and egg.

SUPPLEMENTARY INGREDIENT INFORMATION

Palm Oil	Yes
Hydrogenated Vegetable Oil/Fat	No
GM Protein/DNA	No

ADDITIVES

Product Contains:

Artificial Flavourings

Yes

DIET
SUITABILITY

Vegan Diet

No

Vegetarian Diet

Suitable for

Halal Diet

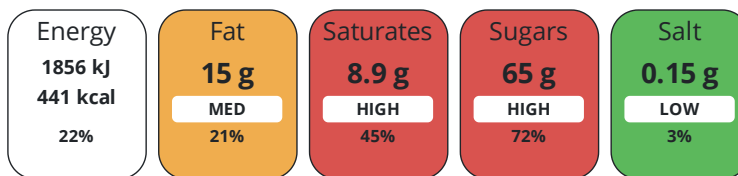
No

Kosher Diet

No

NUTRITIONAL
INFORMATION

Each 100g/ml portion contains:



of your reference intake.

Typical values per 100g/ml : Energy 441kcal / 1856kJ

Nutrient	per 100g	RI per 100g
Energy (kJ)	1856 kJ	22%
Energy (kcal)	441 kcal	22%
Fat	15 g	21%
of which Saturates	8.9 g	45%
Carbohydrate	72 g	28%
of which Sugars	65 g	72%
Fibre	1.1 g	
Protein	3.1 g	6%
Salt	0.15 g	3%

SUPPLEMENTARY
NUTRITIONAL
INFORMATION

HANDLING &
STORAGE
INFORMATION

Directions For Use

Ready To Eat

Storage Instructions

Store in a dry place. Protect from heat.

Shelf Life from Time of Production

275 Days

Exempt From Shelf Life Labelling

No

ORIGIN

Product Country of Origin/Place of

United Kingdom

Provenance

PRODUCT
CHARACTERISTICS
CONFIGURATION

Standards Testing

Case Configuration

Inner Pack Configuration

Total Quantity of Inner Components in

48 Units

Outer Case

Is the Outer Case Splittable?

No

PRODUCT WEIGHTS

Inner Component	
Variable Weight Consumer Item	No
Inner Component Weight	40 g
Net Drained Weight	40 g
Outer Case	
Outer Case Gross Weight	2.04 kg
Outer Case Net Weight	1.92 kg

PRODUCT DIMENSIONS

Inner Component	
Inner Component Depth	35 mm
Inner Component Width	35 mm
Inner Component Height	51 mm
Outer Case	
Outer Case Depth	246 mm
Outer Case Width	189 mm
Outer Case Height	73 mm

PALLET INFORMATION

Quantity of Cases Per Pallet Layer	25 Cases	Pallet Height	1.55 MTR
Quantity of Layers Per Pallet	19 Layers	Pallet Gross Weight	967.2 kg
Quantity of Cases Per Pallet	475 Cases		

PACKAGING

Inner Component Packaging						
Type	Materials	Weight	Recycled Plastic %	Recyclable	Returnable	Composite
Pack	Aluminium	18.14 g	- %			
Outer Case Packaging						
Type	Materials	Weight	Recycled Plastic %	Recyclable	Returnable	Composite
Case	Plastic	6.3 g	- %			
Case	Paper/Cardboard	66.2 g	- %			

OTHER INFORMATION CONTACT INFORMATION

Address	Technical Contact
Cadbury UK Limited	Dobromira Minarikova & Tomas Sakalik
PO Box 12	dobromira.minarikova@mdlz.com
Bournville Lane	tomas.sakalik@mdlz.com
Bournville	
Birmingham	
B30 2LU	
England	
P: (Phone) +44 1214 582 000	

The information on the [Erudus System](#) has been supplied by the manufacturers of the products and, whilst the owners of the Erudus System take steps to ensure the information is regularly updated, they give no warranty and no guarantee that the information is accurate. Product information and ingredients may change, please always read product labels carefully in addition to using the information provided by Erudus.

We do not accept liability for any inaccuracies or incorrect information contained on this site. Please visit <http://www.erudus.com/terms-and-conditions> for full terms and conditions.