

Cadbury Fudge Chocolate Bar 22g



EAN
57030609

Target market(s)
GB, IE

Thomas Ridley
FOODSERVICE

RECEIVED
Thomas Ridley QC Dept.
8:20 am, 10 Jul 2023

The food information supplied by Thomas Ridley Foodservice has been provided by the respective product manufacturer. Whilst we use reasonable endeavours to check this information and ensure its accuracy, we do not give any warranty (whether express or implied), guarantee or representation that it is true, accurate or complete in any respect.

As product information, ingredients, nutritional guides and dietary or allergy advice may change from time to time, **we recommend that you always carefully read the product label prior to using or consuming any such products. You should not solely rely upon the information we provide and make your own assessment as to the suitability or otherwise of any given product.**

Components

Ingredients

Sugar
Glucose Syrup
Palm Oil
Skimmed **Milk** Powder
Cocoa Butter
Cocoa Mass
Whey Permeate Powder (from **Milk**)

Milk Fat

Emulsifiers (E471, Sunflower Lecithins, E442)

Flavourings

Salt

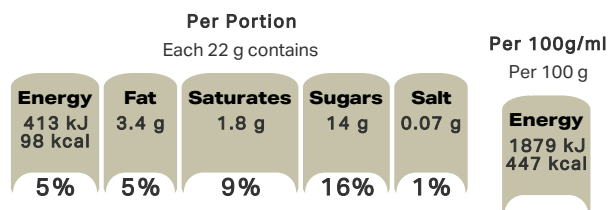
Nutrition

	Per 100 g:	Per Bar (22 g):
Energy	1879 kJ (447 kcal)	413 kJ (98 kcal)
Fat	15 g	3.4 g
of which Saturates	8.0 g	1.8 g
Carbohydrate	75 g	16 g
of which Sugars	65 g	14 g
Fibre	0.6 g	0.1 g
Protein	2.3 g	0.5 g
Salt	0.32 g	0.07 g

Calculated Nutrition

	per 100g	Per Bar (22 g):
Energy (kJ)	1879	413
Energy (kcal)	447	98
Fat (g)	15	3.4
of which saturates (g)	8	1.8
Carbohydrate (g)	75	16
of which sugars (g)	65	14
Fibre (g)	0.6	0.1
Protein (g)	2.3	0.5
Salt (g)	0.32	0.07

Front of Pack Nutrition



% reference intake of an average adult (8400 kJ / 2000 kcal)

Product Description

Alternative Description

Supplier Preferred Product Name - Cadbury Fudge Chocolate Bar 22g

Brand

Cadbury

Features

98 calories
Suitable for vegetarians

Standardised Brand

Brand - Cadbury

Regulated Product Name

Fudge covered with milk chocolate (24 %).

Marketing

Company Name

Mondelez UK / Mondelez Ireland

Company Address

Mondelez UK,
PO Box 7008,
Birmingham,
B30 2PT.

Mondelez Ireland,
Malahide Road,
Coolock,
Dublin 5.

Product Marketing

Melt-in-your-mouth fudge, with just the right amount of bite and squish, covered in a rippling layer of Cadbury milk chocolate. Our answer to the afternoon slump. Made with sustainably sourced cocoa. Vegetarian friendly.

Other Information

Green Dot

Further Description

BeTreatwise.net

Cocoa Life
Partnering with Fairtrade Foundation
www.cocoalife.org

Health & Lifestyle

Lifestyle

- Suitable for Vegetarians

Allergy Advice

Milk - Contains

Storage & Usage

Storage Type

Type

Ambient

Storage

Store in a dry place. Protect from heat.

Brandbank Captured Pack Data

Pack Size

22g e

Numeric Size

Numeric Size - 22

Pack Type

Type - Wrap

Usage Count

Number of uses - Servings

1

Usage Other Text

1 portion per pack

Customer Services

Manufacturers Address

Mondelez UK,
PO Box 7008,
Birmingham,
B30 2PT.

Mondelez Ireland,
Malahide Road,
Coolock,
Dublin 5.

Return To

We are passionate about our great quality Cadbury products. Not completely satisfied? Please contact us:

Freephone 0800 818181 (UK only)

Mondelez UK,
PO Box 7008,
Birmingham,
B30 2PT.

Mondelez Ireland,
Freephone 1-800 678708
Malahide Road,
Coolock,
Dublin 5.
www.cadbury.co.uk

Telephone Helpline

0800 818181 (UK)
1-800 678708

Fax Number

Email Helpline

Web Address

www.cadbury.co.uk

Extended Data

SEO Metatag

Cadbury Fudge, Cadbury Fudge Bar, Chocolate Fudge, Chocolate Covered Fudge, Vegetarian Chocolate, Milk Chocolate, Gluten Free Chocolate