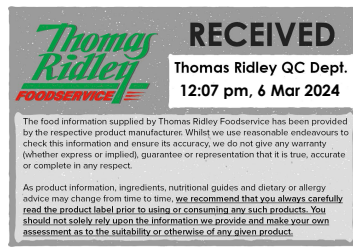


Changed Mar 06, 2024 11:23

Reviewed Mar 06, 2024 11:23

Erudus ID e7e59eaed5c84bafb397b00f2d15c80f

Version 2.0



08306

# Fruits of The Forest Cheesecake; Solid

Fruits Of The Forest Cheesecake 6x1290g

## PRODUCT DESCRIPTION

A crunchy digestive biscuit base topped with a creamy vanilla flavour cheesecake and topped with the fruits of the forest sauce. Sold uncut.

Brand	Mademoiselle Desserts (Taunton)
Manufacturer Product Code	F31361
Product Type	Food
Product Category	Desserts
Storage Type	Frozen
Erudus ID	e7e59eaed5c84bafb397b00f2d15c80f
Specification Type	Bakery Products



Inner Component GTIN	5010823105634
Outer Case GTIN	05010823522837



## INGREDIENTS

### Ingredient Declaration

Digestive Biscuit (18%) (Wheat Flour (WHEAT Flour, Calcium Carbonate, Iron, Nicotinamide, Thiamin), Vegetable Oil (Palm, Rapeseed), Sugar, Wholemeal WHEAT Flour, Invert Sugar Syrup, Raising Agent (Ammonium Bicarbonate)), Water, Low Fat Fromage Frais (MILK) (14%), Sugar, Margarine (Vegetable Oil (Palm, Rapeseed), Water, Emulsifier (Mono- and Diglycerides of Fatty Acids)), Glucose Syrup, Full Fat Soft Cheese (4.6%) (Cream (MILK), Water, Skimmed MILK Powder, Cornflour, BUTTERMILK Powder, Salt), Cream (MILK), Blackberries (3.6%), Blackcurrants (3.5%), Redcurrants (3%), Raspberries (3%), Free Range EGG, Modified Maize Starch, Wheat Flour (WHEAT Flour, Calcium Carbonate, Iron, Niacin, Thiamin), Thickener (Pectin), Acidity Regulators (Citric Acid, Lactic Acid, Trisodium Citrate), Stabilisers (Xanthan Gum, Locust Bean Gum, Guar Gum), Natural Flavouring.

## ALLERGENS

Product Contains:

Celery/Celeriac	No	Mustard	No
Cereals Containing Gluten	Yes	Nuts (Tree)	May Contain
Barley	No	Almond nuts	May Contain
Oats	No	Brazil nuts	No
Rye	No	Cashew nuts	No
Wheat (including Spelt and Khorasan)	Yes	Hazelnuts	May Contain
Crustacea	No	Macadamia (Queensland) nuts	No
Eggs	Yes	Pecan nuts	May Contain
Fish	No	Pistachio nuts	May Contain
Lupin	No	Walnuts	May Contain
Milk	Yes	Peanuts	No
Molluscs	No	Sesame Seeds	No
		Soybeans	No
		Sulphur Dioxide and Sulphites	No

Risk Source:

<b>Tree Nuts (Risk Source)</b>	Line	<b>Almond nuts (Risk Source)</b>	Line
<b>Hazelnuts (Risk Source)</b>	Line	<b>Pecan nuts (Risk Source)</b>	Line
<b>Pistachio nuts (Risk Source)</b>	Line	<b>Walnuts (Risk Source)</b>	Line

**Allergen Statement On Pack**

ALLERGY ADVICE: For allergens, including cereals containing gluten, see ingredients in CAPITALS. Suitable for vegetarians. May contain traces of nuts.

SUPPLEMENTARY  
INGREDIENT  
INFORMATION

<b>Palm Oil</b>	Yes
<b>Hydrogenated Vegetable Oil/Fat</b>	No
<b>GM Protein/DNA</b>	No

ADDITIVES

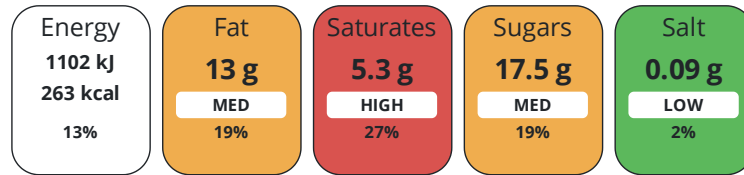
Product Contains:

<b>Artificial Antioxidants</b>	No	<b>Artificial Flavourings</b>	No
<b>Artificial Colours</b>	No	<b>Artificial Preservatives</b>	No
<b>Artificial Flavour Enhancers</b>	No	<b>Artificial Sweeteners</b>	No
<b>Vegan Diet</b>	No	<b>Vegetarian Diet</b>	Suitable for
<b>Halal Diet</b>	No	<b>Kosher Diet</b>	No

DIET  
SUITABILITY

NUTRITIONAL  
INFORMATION

Each 100g/ml portion contains:



of your reference intake.

Typical values per 100g/ml : Energy 263kcal / 1102kJ

Nutrient	per 100g	RI per 100g
<b>Energy (kJ)</b>	1102 kJ	13%
<b>Energy (kcal)</b>	263 kcal	13%
<b>Fat</b>	13 g	19%
<b>of which Saturates</b>	5.3 g	27%
<b>Carbohydrate</b>	31.9 g	12%
<b>of which Sugars</b>	17.5 g	19%
<b>Fibre</b>	1.4 g	
<b>Protein</b>	3.9 g	8%
<b>Salt</b>	0.09 g	2%
<b>Sodium</b>	40 mg	

**Source of Nutritional Information** Calculation from known/accepted datasets

SUPPLEMENTARY  
NUTRITIONAL  
INFORMATION

HFSS (HIGH IN  
FAT, SALT AND  
SUGAR)

<b>HFSS Status</b>	Yes
<b>HFSS Score</b>	16

HANDLING &  
STORAGE  
INFORMATION

**Directions For Use**

For best results remove all packaging whilst product is still frozen and place on a serving plate. Defrost for approximately 8 hours or overnight in a refrigerator at 5°C. Once defrosted store in a refrigerator (5°C) and consume within 48 hours.

**Storage Instructions**

DO NOT REFREEZE ONCE DEFROSTED. STORE AT -18°C OR COLDER.

**Storage Instructions After Opening**

Once defrosted store in a refrigerator (5°C) and consume within 48 hours.

<b>Shelf Life from Time of Production</b>	547 Days	<b>Exempt From Shelf Life Labelling</b>	No
<b>Shelf Life From Opening</b>	2 Days		
<b>Shelf Life Once Defrosted</b>	2 Days		

ACCREDITATIONS/  
CERTIFICATIONS/  
ASSURANCE  
SCHEMES



ORIGIN

**Product Country of Origin/Place of** United Kingdom

**Provenance**

**Additional Origin Details**

Baked by Mademoiselle Desserts, Frobisher Way, Taunton, TA2 6AB, UK Part of Mademoiselle Desserts, 14 place Georges Pompidou, 78180 Montigny le Bretonneux, France

PRODUCT  
CHARACTERISTICS

Standards Testing

<b>Do you undertake trend analysis of microbiological results?</b>	Yes	<b>Is shelf life testing undertaken?</b>	Yes
--	-----	--	-----

SUPPLEMENTARY INFORMATION

<b>Egg Source</b>	Free-range
<b>Case Configuration</b>	Inner Pack Configuration
<b>Variable Inner Components in Outer Case</b>	No
<b>Total Quantity of Inner Components in Outer Case</b>	6 Units
<b>Is the Outer Case Splittable?</b>	Yes

CONFIGURATION

PRODUCT  
WEIGHTS

Inner Component	
<b>Variable Weight Consumer Item</b>	No
<b>Inner Component Weight</b>	1290 g
Outer Case	
<b>Outer Case Gross Weight</b>	8.8 kg
<b>Outer Case Net Weight</b>	7.74 kg

PRODUCT  
DIMENSIONS

Inner Component	
<b>Inner Component Depth</b>	270 mm
<b>Inner Component Width</b>	270 mm
<b>Inner Component Height</b>	70 mm
Outer Case	
<b>Outer Case Depth</b>	555 mm
<b>Outer Case Width</b>	275 mm
<b>Outer Case Height</b>	235 mm

PALLET  
INFORMATION

<b>Quantity of Cases Per Pallet Layer</b>	6 Cases	<b>Pallet Height</b>	1.56 MTR
<b>Quantity of Layers Per Pallet</b>	6 Layers	<b>Pallet Gross Weight</b>	354.73 kg
<b>Quantity of Cases Per Pallet</b>	36 Cases		

## PACKAGING

## Inner Component Packaging

Type	Materials	Weight	Recycled Plastic %	Recyclable	Returnable	Composite
Film	Plastic / LDPE (Low Density Polyethylene)	8 g	30 %	Yes	No	No
Box	Paper/Cardboard / Cardboard	151 g	- %	Yes	No	No
Foil	Aluminium	20 g	- %	No	No	No
Label	Paper/Cardboard / Paper	1.5 g	- %	No	No	No

## Outer Case Packaging

Type	Materials	Weight	Recycled Plastic %	Recyclable	Returnable	Composite
Tape	Plastic / PP (Polypropylene)	5 g	0 %	No	No	No
Case	Paper/Cardboard / Cardboard	277 g	- %	Yes	No	No
Label	Paper/Cardboard / Paper	1.6 g	- %	No	No	No

## Transport Packaging

Type	Materials	Weight	Recycled Plastic %	Recyclable	Returnable	Composite
Pallet Wrap	Plastic / LDPE (Low Density Polyethylene)	350 g	30 %	Yes	No	No
Other	Paper/Cardboard / Corrugated	1604 g	- %	Yes	No	No
Pallet	Wood	25000 g	- %	No	Yes	No

## OTHER INFORMATION

<b>Intrastat/Taric Code</b>	1905907000
<b>Commodity Code</b>	19059070

## CONTACT INFORMATION

Address	Technical Contact
Mademoiselle Desserts (Taunton)	David Moran
Frobisher Way	Technical Manager
Bindon Road	d.moran@mdesserts.com
Taunton	
Somerset	P: (Phone) 01823 257922
TA2 6AB	
England	

P: (Phone) 01823 257922

Complaints Contact	Commercial Contact
David Moran	Clare Harrison
Technical Manager	National Account Manager
d.moran@mdesserts.com	c.harrison@mdesserts.com

P: (Phone) 01823 257922

P: (Phone) 01823 257922

The information on the [Erudus System](#) has been supplied by the manufacturers of the products and, whilst the owners of the Erudus System take steps to ensure the information is regularly updated, they give no warranty and no guarantee that the information is accurate. Product information and ingredients may change, please always read product labels carefully in addition to using the information provided by Erudus.

We do not accept liability for any inaccuracies or incorrect information contained on this site.  
Please visit <http://www.erudus.com/terms-and-conditions> for full terms and conditions.