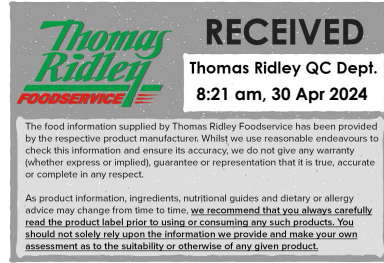


Changed Apr 29, 2024 11:05

Reviewed Apr 29, 2024 11:05

Erudus ID aa5b3325e66c46c2a7009669f08b60e2

Version 3.0



Applewood® Vegan Slices

Applewood® Vegan

PRODUCT DESCRIPTION

Smoky vegan cheese alternative slices with added Calcium and Vitamin B12.

Brand	Norseland Limited
Manufacturer Product Code	30965
Product Type	Food
Product Category	Dairy-Free Milk Alternatives
Storage Type	Chilled
Erudus ID	aa5b3325e66c46c2a7009669f08b60e2
Specification Type	Alternatives (Vegetarian and Vegan)
Inner Component GTIN	5014442015848
Manufacturer Component Code	30965
Inner Pack GTIN	5014442015848
Inner Pack Product Code	30965
Outer Case GTIN	05014442015855



INGREDIENTS

Ingredient Declaration

Water, Modified Starch, Coconut Oil, Sea Salt, Vegan Flavours,

Colour: Beta Carotene, Calcium Lactate, Smoke Flavouring, Olive extract, Acidity Regulator: Lactic Acid, Vitamin B12.

ALLERGENS

Product Contains:

Celery/Celeriac	No
Cereals Containing Gluten	No
Barley	No
Oats	No
Rye	No
Wheat (including Spelt and Khorasan)	No
Crustacea	No
Eggs	No
Fish	No
Lupin	No
Milk	May Contain
Molluscs	No
Mustard	No
Nuts (Tree)	No
Almond nuts	No
Brazil nuts	No
Cashew nuts	No
Hazelnuts	No
Macadamia (Queensland) nuts	No
Pecan nuts	No
Pistachio nuts	No
Walnuts	No
Peanuts	No
Sesame Seeds	No
Soybeans	No
Sulphur Dioxide and Sulphites	No

Risk Source:

Milk (Risk Source)	Factory
---------------------------	---------

Allergen Statement On Pack

Produced in a facility handling milk. May contain Milk.

SUPPLEMENTARY INGREDIENT INFORMATION

Palm Oil	No
Hydrogenated Vegetable Oil/Fat	No
GM Protein/DNA	No

ADDITIVES

Product Contains:

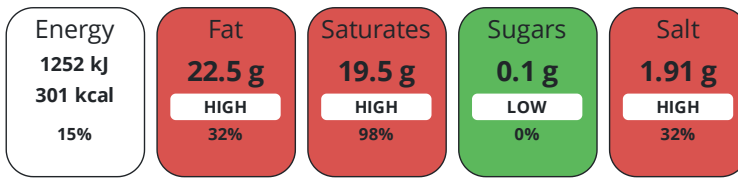
Artificial Antioxidants	No
Artificial Colours	No
Artificial Flavour Enhancers	No
Artificial Flavourings	No
Artificial Preservatives	No
Artificial Sweeteners	No

DIET SUITABILITY

Vegan Diet	Suitable for	Vegetarian Diet	Suitable for
Halal Diet	Suitable for	Kosher Diet	Suitable for

NUTRITIONAL INFORMATION

Each 100g/ml portion contains:



of your reference intake.

Typical values per 100g/ml : Energy 301kcal / 1252kj

Nutrient	per 100g	RI per 100g	per 28g serving	RI per 28g serving
Energy (kJ)	1252 kJ	15%	350.6 kJ	4%
Energy (kcal)	301 kcal	15%	84.3 kcal	4%
Fat	22.5 g	32%	6.3 g	9%
of which Saturates	19.5 g	98%	5.5 g	28%
of which Mono-unsaturates	0 g		-	
of which Polyunsaturates	0 g		-	
Carbohydrate	24.6 g	9%	6.9 g	3%
of which Sugars	0.1 g	0%	-	
Fibre	< 0.5 g		0.1 g	
Protein	< 0.5 g	1%	0.1 g	0%
Salt	1.91 g	32%	0.5 g	8%
Sodium	764 mg		213.9 mg	
Serving Size			28 g	

Source of Nutritional Information Manufacturers analysis

VITAMINS AND MINERALS

Nutrient	per 100g	RI per 100g	per 28g serving	RI per 28g serving
Vitamin B12	2.5 µg	100%	0.7 µg	28%
Calcium	74 mg	9%	20.7 mg	3%

SUPPLEMENTARY NUTRITIONAL INFORMATION

Trans Fats per 100 g/ml	0.1 g
Fibre Type	Fibre Unknown

HFSS (HIGH IN FAT, SALT AND SUGAR)

HFSS Status Not Applicable (out of scope, exempt)

HANDLING & STORAGE INFORMATION

Directions For Use

Use before the date stated on the packaging. Once opened, consume within 3 days, store in an original packaging.

Storage Instructions

Keep refrigerated at <5°C.

Storage Instructions After Opening

Keep refrigerated and consume within 3 days of opening

Shelf Life from Time of Production	182 Days
Shelf Life From Opening	3 Days
Exempt From Shelf Life Labelling	No

The Vegan Society

BRCGS Certified

Other Accreditation

ORIGIN

Product Country of Origin/Place of United Kingdom**Provenance****Additional Origin Details**

United Kingdom

PRODUCT CHARACTERISTICS

Standards Testing

Do you undertake trend analysis of microbiological results?

Yes

Is shelf life testing undertaken?

Yes

Microbiological Standards

Organism	Description	Frequency	Target	Maximum	Sample (g or ml)
E. Coli (cfu/g or ml)		Monthly	<10	10	25
Enterobacteriaceae (cfu/g or ml)		Monthly	<10	10	25
Listeria Monocytogenes (cfu/g or ml)		Monthly	=0	0	25
Staphylococcus Aureus (cfu/g or ml)		Monthly	<50	50	25
Salmonella (cfu/g or ml)		Monthly	=0	0	25
Yeast (cfu/g or ml)		Monthly	<1000	100000	25
Moulds (cfu/g or ml)		Monthly	<1000	100000	25

CONFIGURATION

Case Configuration

Total Quantity of Inner Components in Outer Case

12 Units

Total Quantity of Inner Packs in Outer Case

12 Units

Inner Pack Configuration

Is Inner Pack Splittable?

No

PRODUCT WEIGHTS

Inner Component

Variable Weight Consumer Item

Yes

Inner Component Weight

200 g

e mark

Yes

Inner Pack

Inner Pack Gross Weight

215.46 g

Inner Pack Net Weight

200 g

Outer Case

Outer Case Gross Weight

2.75 kg

Outer Case Net Weight

2.4 kg

PRODUCT DIMENSIONS

Inner Component

Inner Component Depth	240 mm
Inner Component Width	130 mm
Inner Component Height	20 mm
Inner Pack	
Inner Pack Depth	30 mm
Inner Pack Width	125 mm
Inner Pack Height	205 mm

Outer Case

Outer Case Depth	240 mm
Outer Case Width	250 mm
Outer Case Height	140 mm

PALLET INFORMATION

Quantity of Cases Per Pallet Layer	28 Cases
Quantity of Layers Per Pallet	5 Layers
Quantity of Cases Per Pallet	140 Cases
Pallet Height	1.22 MTR
Pallet Gross Weight	237 kg

PACKAGING

Inner Component Packaging

Type	Materials	Weight	Recycled Plastic %	Recyclable	Returnable	Composite
Heat Sealed	Plastic	18.9 g	- %			
Heat Sealed	Paper/Cardboard	1.5 g	- %			

Outer Case Packaging

Type	Materials	Weight	Recycled Plastic %	Recyclable	Returnable	Composite
Case	Paper/Cardboard	101 g	- %			

OTHER INFORMATION

CONTACT INFORMATION

Address

Norseland Limited
Somerton Road
Ilchester
Somerset
BA22 8JL
United Kingdom

P: (Phone) 01935 842800

Technical Contact

Courtney Stewart
Specifications Technologist
cstewart@norseland.co.uk

P: (Phone) 01935842810

Complaints Contact

customercomplaint@norseland.co.uk

Commercial Contact

Tom Dale
Senior National Account Manager for Foodservice & B2B
tdale@norseland.co.uk

P: (Phone) 07795572629

The information on the [Erudus System](#) has been supplied by the manufacturers of the products and, whilst the owners of the Erudus System take steps to ensure the information is regularly updated, they give no warranty and no guarantee that the information is accurate. Product information and ingredients may change, please always read product labels carefully in addition to using the information provided by Erudus.

We do not accept liability for any inaccuracies or incorrect information contained on this site.
Please visit <http://www.erudus.com/terms-and-conditions> for full terms and conditions.