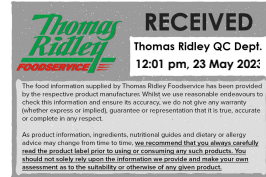


Supplier's Product Code :
Product Added :
Last Updated by Supplier :
erudus id :

17806
23 April 2021
13 December 2021
822dfdc8b473448ea159a4499a3a19f3



The information on the Erudus System has been supplied by the manufacturers of the products and, whilst the owners of the Erudus System take steps to ensure the information is regularly updated, they give no warranty and no guarantee that the information is accurate. Product information and ingredients may change, please always read product labels carefully in addition to using the information provided by Erudus One.

We do not accept liability for any inaccuracies or incorrect information contained on this site. Please visit <http://www.erudus.com/terms-and-conditions> for full terms and conditions.

Maryland Cookies Minis Choc Chip 40g

Short Product Name:
Cookies Choc Chip

Product Description:
Mini cookies containing chocolate chips

General Information

Food/Drink :	Food
Product Category :	Ambient
Generic Product Type :	Biscuits & Wafers

Supplier's Product Code :
17806
Supplier: Burton's Food Limited
Burtons Biscuits, Charter Court
74-78 Victoria St
St Albans
Hertfordshire
AL1 3XH
United Kingdom
P: 01727899700

OUTER PRODUCT

Outer case Information

Outer Case GTIN :	05010049157714
Packaging Type Description :	Case
Total Quantity of Inner Units in Outer Case :	48 Units
Is Trade Item Splittable? :	No

Outer Case Length :	316 mm
Outer Case Width :	241 mm
Outer Case Height :	192 mm
Product Gross Weight :	221.55 kg
Product Net Weight :	201.60 kg

Pallet Information

Quantity of Cases Per Pallet Layer :	15 Cases
Quantity of Layers Per Pallet :	7 Layers
Quantity of Cases Per Pallet :	105 Cases

Pallet Height :	1.51 MTR
Pallet Gross Weight :	251.55 kg

Logistical Information

Shelf Life from Time of Production :	273 Days
Guaranteed Shelf Life on Delivery :	204 Days

Minimum Order Quantity :	Not specified.
Delivery Lead Time :	Not specified.

Waste Packaging Weight - Outer Case

Glass :	0.00 g
Plastic :	0.00 g
Percentage Recycled Plastic :	Not specified.
Paper/Board :	114.00 g

Aluminium :	0.00 g
Steel :	0.00 g
Other :	0.00 g

Waste Packaging Weight - Transport Packaging

Plastic :	Not specified.
Paper/Board :	Not specified.
Percentage Recycled Plastic :	Not specified.

Wood Total :	Not specified.
Is Pallet Returnable? :	-

Other Information

Supplier Comments:
Not specified.

INNER PRODUCT

Origin Information

Product Country of Origin/Place of Provenance : United Kingdom

Additional Origin Details :
Made using EU and Non-EU Ingredients

Inner Pack Information

Internal GTIN : 0072417122385

Packaging Type Description : Polypropylene Film

Variable Weight Consumer Item : No

Net Drained Weight : Not specified.

Inner Unit Length : 222 mm

Inner Unit Height : 0 mm

Inner Unit Width : 135 mm

Inner Product Weight : Not specified.

Inner Product Weight Units : g

Weight/Volume :
40g

Handling Information

Directions For Use :
N/A

Storage Instructions :
Store in a cool, dry place away from strong light.
Once opened, store in an airtight container.

Dietary Information

Ingredients :

WHEAT Flour (with Calcium carbonate, Iron, Niacin and Thiamin), Palm oil, Sugar, Chocolate chips (16%) (Sugar, Cocoa Mass, Vegetable fats (Palm, Shea, Sal), Cocoa butter, Emulsifier (**SOYA** lecithin)), Whey or whey derivatives (**MILK**), Partially inverted refiners syrup, Raising agents (Sodium bicarbonate, Ammonium bicarbonate), Salt, Flavouring

Product contains:

GM Protein/DNA :	No
Celery/Celeriac (and products thereof) :	No
Lupin (and products thereof) :	No
Eggs (and products thereof) :	No
Fish (and products thereof) :	No
Soybeans (and products thereof) :	Yes
Milk (and products thereof) :	Yes
Mustard (and products thereof) :	No
Peanuts (and products thereof) :	No
Sesame Seeds (and products thereof) :	No
Crustacea (and products thereof) :	No
Molluscs (and products thereof) :	No
Nuts (and products thereof) :	May Contain
Almond nuts :	May Contain
Hazelnuts :	May Contain
Walnuts :	No
Cashew nuts :	No
Pecan nuts :	May Contain
Brazil nuts :	No
Pistachio nuts :	May Contain
Macadamia nuts :	No
Queensland nuts :	No
Cereals Containing Gluten :	Yes
Wheat (and products thereof) :	Yes
Rye (and products thereof) :	No
Barley (and products thereof) :	May Contain
Oats (and products thereof) :	May Contain
Spelt (and products thereof) :	No
Kamut (and products thereof) :	No
Gluten content <20ppm :	No
Hydrogenated Vegetable Oil/Fat :	No
Palm Oil :	Yes
Sulphur Dioxide and Sulphites :	Below 10mg per kg/litre (not 0 mg)
Sulphur Dioxide/Sulphites Concentration :	<= 1.95 mg/kg

Product contains :

Artificial Antioxidants :	No
Artificial Colours :	No
Artificial Flavourings :	No
Artificial Flavour Enhancers :	No
Artificial Preservatives :	No
Artificial Sweeteners :	No

Product suitability:

Suitable for a Vegetarian Diet :	Yes
Suitable for a Vegan Diet :	No
Suitable for Sufferers of Lactose Intolerance :	No
Suitable for Coeliacs :	No
Approved for a Halal Diet :	No
Approved for a Kosher Diet :	No
HFSS (High in Fat, Salt and Sugar) :	-

Allergen Statement :

For allergens, including cereals containing gluten, see ingredients in bold. May also contain Nuts, Oats, Barley.

Nutritional Information

Average Serving :	40.00 g or ml
Count per 100g :	Not specified.
Count Per Pack :	Not specified.
Energy per 100 G/ML :	2,092.00 kJ
Energy per 100 G/ML :	499.00 kcal
Fat per 100 G/ML :	23.2 g
- of which Saturates per 100 G/ML :	11.4 g
- of which Mono-unsaturates per 100 G/ML :	Not specified.
- of which Polyunsaturates per 100 G/ML :	Not specified.
Trans Fats per 100 G\ML :	Not specified.
Carbohydrate Per 100 G/ML :	65.8 g
- of which Sugars per 100 G/ML :	30.3 g
- of which Polyols per 100 G/ML :	Not specified.
- of which Starch per 100 G/ML :	Not specified.
Fibre per 100 G/ML :	2.4 g
Protein per 100 G/ML :	5.7 g
Salt per 100 G/ML :	0.61 g
Sodium per 100 G\ML :	Not specified.

Vitamin A per 100g :	Not specified.
Vitamin C per 100g :	Not specified.
Folate/Folic Acid per 100g :	Not specified.
Calcium per 100g :	Not specified.
Iron per 100g :	Not specified.
Zinc per 100g :	Not specified.
Cholesterol per 100 G/ML (UK/FR) :	Not specified.
Non Milk Extrinsic Sugars per 100gm :	Not specified.
Alcoholic Strength %Vol :	Not specified.
Fat Percentage in Dry Matter per 100g :	Not specified.

Waste Packaging Weight - Inner Unit

Glass :	0.00 g
Plastic :	1.20 g
Percentage Recycled Plastic :	Not specified.
Paper/Board :	0.00 g

Aluminium :	0.00 g
Steel :	0.00 g
Other :	0.00 g

Accreditations / Certifications / Assurance Schemes

BRCGS Certified Production :	Yes
Red Tractor :	No
Fairtrade :	No
Marine Stewardship Council Certified (MSC) :	No
Organic :	No
SALSA (Safe & Local Supplier Approval) :	No
British Lion Mark :	No
RSPCA Assured :	No
LEAF Marque (Linking Environment and Farming) :	No
Rainforest Alliance :	No
Food for Life Supplier Scheme :	No
Quality Meat Scotland :	No
Farm Assured Welsh Livestock :	No
Northern Ireland Beef & Lamb Farm Quality Assurance Scheme :	No
Quality Standard Mark (Beef/Lamb) :	No
Roundtable of Sustainable Palm Oil (RSPO) :	Yes
School Approved (The Requirement for School Food Regulation 2014) :	No
IFS Food Standard :	No
Best Aquaculture Practices (BAP) Certification :	No
ISO 14001 (Environmental System) :	No
FSSC 22000 :	No

Other Accreditation :	Not specified.
Intra Stat/Taric Code :	Not specified.
Commodity Code :	Not specified.
Identification/Health Marks :	Not specified.

Standards Testing

Do you undertake trend analysis of microbiological results?: Yes

Is shelf life testing undertaken? : Yes

Microbiological Standards

Organism	Frequency	Target	Maximum	Sample (g or ml)	Note
E. Coli (cfu/g or ml)	Annually	<10	10	-	cfu/g
Enterobacteriaceae (cfu/g or ml)	Annually	<10	10	-	cfu/g
Moulds (cfu/g or ml)	Annually	<100	100	-	cfu/g
Salmonella	Annually	<0	0	-	cfu/g
Staphylococcus Aureus (cfu/g or ml)	Annually	<10	10	-	cfu/g
Total Viable Count (TVC) (cfu/g or ml)	Annually	<5000	5000	-	cfu/g
Yeast (cfu/g or ml)	Annually	<100	100	-	cfu/g

Analytical Standards

Not available.