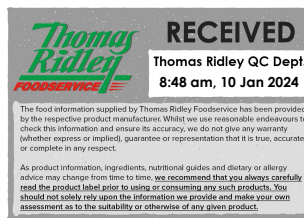


Changed Jan 10, 2024 00:00

Reviewed Jan 09, 2024 15:40

Erudus ID 6c06fb05220b4656b2c5c3e019ec38cb

Version 2.0



Thomas Ridley
FOODSERVICE

RECEIVED
Thomas Ridley QC Dept.
8:48 am, 10 Jan 2024

The food information supplied by Thomas Ridley Foodservice has been provided by the respective product manufacturer. Whilst we use reasonable endeavours to check this information and ensure its accuracy, we do not give any warranty (whether express or implied, guarantee or representation that it is true, accurate or complete in any respect).

As product information, ingredients, nutritional guides and dietary or allergy advice may change from time to time, we recommend that you always carefully read the product label prior to using or consuming any such products. You should not solely rely upon the information we provide and make your own assessment as to the suitability or otherwise of any given product.



Sundried Tomato, Pesto & Mozzarella Panini

Sundried Tomato, Pesto & Mozzarella Panini 12 x 147g

PRODUCT DESCRIPTION

Stone baked panini hand filled with sundried tomatoes, basil pesto & mozzarella cheese.

Brand	Quality Irish Food
Manufacturer Product Code	MRC16621
Effective Date	Jan 9, 2024
Product Type	Food
Product Category	Sandwiches
Storage Type	Frozen
Erudus ID	6c06fb05220b4656b2c5c3e019ec38cb
Specification Type	Generic



Inner Component GTIN	5390634003436
Outer Case GTIN	05390634005522



INGREDIENTS

Ingredient Declaration

Panini [**WHEAT** Flour (**WHEAT** Flour, Calcium Carbonate, Iron, Niacin, Thiamin), Water, Vegetable Oils (Palm, Rapeseed), Sugar, Dried Skimmed **MILK**, Salt, Yeast, Extra Virgin Olive Oil, Semolina **WHEAT**, Emulsifier (Mono- and Di-Glycerides of Fatty Acids), **WHEAT** Gluten, Malted **WHEAT** Flour, Flour Treatment Agent (Ascorbic Acid)], Basil Pesto (19%) [Basil, Rapeseed Oil, Regato **Cheese (MILK**, Potato Starch), White **Cheddar Cheese (MILK**, Potato Starch), Extra Virgin Olive Oil, Garlic Cloves, Salt, Black Pepper], **Mozzarella Cheese (15%) (MILK)**, Sun-dried Tomatoes (15%) [Sundried Tomatoes, Sunflower Oil, Salt, Garlic, Oregano, Parsley, Onion, Acidity Regulator (Citric Acid), Antioxidant (Ascorbic Acid)].

ALLERGENS

Product Contains:

Celery/Celery	No	Mustard	No
Cereals Containing Gluten	Yes	Nuts (Tree)	No
Barley	No	Almond nuts	No
Oats	No	Brazil nuts	No
Rye	No	Cashew nuts	No
Wheat (including Spelt and Khorasan)	Yes	Hazelnuts	No
Crustacea	No	Macadamia (Queensland) nuts	No
Eggs	No	Pecan nuts	No
Fish	No	Pistachio nuts	No
Lupin	No	Walnuts	No
Milk	Yes	Peanuts	No
Molluscs	No	Sesame Seeds	No
		Soybeans	No
		Sulphur Dioxide and Sulphites	No

SUPPLEMENTARY INGREDIENT INFORMATION

Palm Oil	Yes
Hydrogenated Vegetable Oil/Fat	No
GM Protein/DNA	No

ADDITIVES

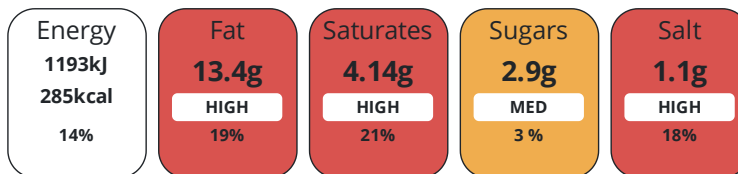
Product Contains:

Artificial Antioxidants	No	Artificial Flavourings	No
Artificial Colours	No	Artificial Preservatives	No
Artificial Flavour Enhancers	No	Artificial Sweeteners	No
Vegan Diet	No	Vegetarian Diet	Suitable for
Halal Diet	No	Kosher Diet	No

DIET
SUITABILITY

NUTRITIONAL
INFORMATION

Each 100g/ml portion contains:



of your reference intake.

Typical values per 100g/ml : Energy 285kcal / 1193kj

Nutrient	per 100g	RI per 100g	per 147g serving	RI per 147g serving
Energy (kj)	1193 kj	14%	1753.7 kj	21%
Energy (kcal)	285 kcal	14%	419 kcal	21%
Fat	13.4 g	19%	19.7 g	28%
of which Saturates	4.14 g	21%	6.1 g	31%
Carbohydrate	33 g	13%	48.5 g	19%
of which Sugars	2.9 g	3%	4.3 g	5%
Fibre	5.4 g		7.9 g	
Protein	11 g	22%	16.2 g	32%
Salt	1.1 g	18%	1.6 g	27%
Serving Size	147 g			

SUPPLEMENTARY
NUTRITIONAL
INFORMATION

HANDLING &
STORAGE
INFORMATION

Directions For Use

Cooking instructions may vary depending on appliance. These instructions are given as a guide only. Please ensure that the product is piping hot and a core product temperature of 75°C throughout before serving. Ready to Cook Product (RTC). OVEN COOK: Preheat Oven to 180°C/350°F / Gas Mark 4. Place Panini in unopened packaging onto a baking tray. Place the baking tray onto the middle shelf of the pre-heated oven. Cook for 17 minutes. Ensure product reaches a minimum 75°C throughout the product before serving. PANINI GRILL: Preheat grill at 180 °C. Place Panini in unopened packaging on the panini grill. Cook for 10 minutes. Ensure product reaches a minimum 75°C throughout the product before serving. MICROWAVE: Place Panini, in unopened packaging onto a microwaveable plate. Microwave at 1000W for 1 minute. Allow to stand prior to consumption. Ensure product reaches a minimum 75°C throughout the product before serving. MERRYCHEF E3 250°C -Preheat oven to 250°C. Place panini in unopened packaging on a tray. Cook for 1 minute 10 seconds. Ensure product reaches a minimum 75°C throughout the product before serving. Fan – 70%, Microwave -80%

Storage Instructions

Keep Frozen <-18°C To Defrost: Remove product from freezer and place in the fridge. Defrost fully in the fridge at 0-5°C. Once defrosted, do not refreeze. Maximum shelf life from date of defrosting is 3 days, stored at 0-5°C.

Shelf Life from Time of Production	547 Days	Exempt From Shelf Life Labelling	No
---	----------	---	----

ORIGIN	Product Country of Origin/Place of Provenance		Ireland			
PRODUCT CHARACTERISTICS	Standards Testing					
	Do you undertake trend analysis of microbiological results?	No	Is shelf life testing undertaken?		Yes	
	Microbiological Standards					
	Organism	Description	Frequency	Target	Maximum	Sample (g or ml)
	Bacillus Cereus (cfu/g or ml)		Monthly	<500	1000	147
	Staphylococcus Aureus (cfu/g or ml)		Monthly	<20	100	147
	Salmonella (cfu/g or ml)		Monthly	<0	0	147
	E. Coli (cfu/g or ml)		Monthly	<20	100	147
CONFIGURATION	Case Configuration		Inner Pack Configuration			
	Total Quantity of Inner Components in Outer Case	12 Units				
	Is the Outer Case Splittable?	No				
PRODUCT WEIGHTS	Inner Component					
	Variable Weight Consumer Item	Yes				
	Outer Case					
	Outer Case Gross Weight	2 kg				
	Outer Case Net Weight	1.76 kg				
PRODUCT DIMENSIONS	Inner Component					
	Inner Component Depth	245 mm				
	Inner Component Width	45 mm				
	Inner Component Height	110 mm				
	Outer Case					
	Outer Case Depth	250 mm				
	Outer Case Width	190 mm				
	Outer Case Height	200 mm				
PALLET INFORMATION	Quantity of Cases Per Pallet Layer	22 Cases	Pallet Height		1.56 MTR	
	Quantity of Layers Per Pallet	7 Layers	Pallet Gross Weight		308 kg	
	Quantity of Cases Per Pallet	154 Cases				
PACKAGING	Inner Component Packaging					
	Type	Materials	Weight	Recycled Plastic %	Recyclable	Returnable Composite
	Paper/Polyethylene	Plastic	5 g	- %		
	Outer Case Packaging					
	Type	Materials	Weight	Recycled Plastic %	Recyclable	Returnable Composite
	Case	Paper/Cardboard	180 g	- %		

Transport Packaging

Type	Materials	Weight	Recycled Plastic %	Recyclable	Returnable	Composite
Other	Plastic	500 g	- %			
Other	Paper/Cardboard	1080 g	- %			
Other	Wood	28000 g	- %			

OTHER INFORMATION

Commodity Code	19059070	Identification/Health Marks	IE152EC
-----------------------	----------	------------------------------------	---------

CONTACT INFORMATION

Address	Technical Contact
Quality Irish Food	Natalia Niespodzianska
Finea, Mullingar, Co. Westmeath, Ireland, N91 H0VH	Specifications Technologist
Mullingar	technical@mrcrumb.ie
Co. Westmeath	
N91 H0VH	P: (Phone) +353436681148
Ireland	
P: (Phone) + 353 (0)43 6681148	

The information on the [Erudus System](#) has been supplied by the manufacturers of the products and, whilst the owners of the Erudus System take steps to ensure the information is regularly updated, they give no warranty and no guarantee that the information is accurate. Product information and ingredients may change, please always read product labels carefully in addition to using the information provided by Erudus.

We do not accept liability for any inaccuracies or incorrect information contained on this site. Please visit <http://www.erudus.com/terms-and-conditions> for full terms and conditions.