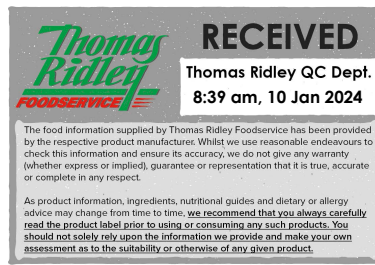


Changed Jan 10, 2024 00:00

Reviewed Jan 09, 2024 15:35

Erudus ID 5cab025a742481ab0ebab1a6306e19b

Version 2.0



# Tuna Melt Panini 12x167g

Tuna Melt Panini 12 x 167g

## PRODUCT DESCRIPTION

A stone baked panini hand filled with tuna, sweetcorn, mayonnaise and Mature cheddar cheese.

Brand	Quality Irish Food
Manufacturer Product Code	MRC16617
Effective Date	Jan 9, 2024
Product Type	Food
Product Category	Sandwiches
Storage Type	Frozen
Erudus ID	5cab025a742481ab0ebab1a6306e19b
Specification Type	Generic



Inner Component GTIN	5390634003153
Outer Case GTIN	05390634005317



## INGREDIENTS

### Ingredient Declaration

Panini [**WHEAT** Flour (**WHEAT** Flour, Calcium Carbonate, Iron, Niacin, Thiamin), Water, Vegetable Oils (Palm, Rapeseed), Sugar, Dried Skimmed **MILK**, Salt, Yeast, Extra Virgin Olive Oil, Semolina **WHEAT**, Emulsifier (Mono- and Di-Glycerides of Fatty Acids), **WHEAT** Gluten, Malted **WHEAT** Flour, Flour Treatment Agent (Ascorbic Acid)], **Tuna (FISH)** (21%) [**Tuna**, Water, Salt], Mayonnaise (18%) [Rapeseed Oil, Pasteurized **EGG**, Sugar, Spirit Vinegar, Salt, Stabilizer (Xanthan Gum), **MUSTARD** Flavouring, Antioxidant (Calcium Disodium EDTA), Colour (Paprika Extract)], Sweetcorn (9%) [Sweetcorn, Water, Salt], **Cheddar Cheese (MILK)** (13%), Black Pepper.

## ALLERGENS

Product Contains:

<b>Celery/Celериac</b>	No	<b>Mustard</b>	Yes
<b>Cereals Containing Gluten</b>	Yes	<b>Nuts (Tree)</b>	No
<b>Barley</b>	No	<b>Almond nuts</b>	No
<b>Oats</b>	No	<b>Brazil nuts</b>	No
<b>Rye</b>	No	<b>Cashew nuts</b>	No
<b>Wheat (including Spelt and Khorasan)</b>	Yes	<b>Hazelnuts</b>	No
<b>Crustacea</b>	No	<b>Macadamia (Queensland) nuts</b>	No
<b>Eggs</b>	Yes	<b>Pecan nuts</b>	No
<b>Fish</b>	Yes	<b>Pistachio nuts</b>	No
<b>Lupin</b>	No	<b>Walnuts</b>	No
<b>Milk</b>	Yes	<b>Peanuts</b>	No
<b>Molluscs</b>	No	<b>Sesame Seeds</b>	No
		<b>Soybeans</b>	No
		<b>Sulphur Dioxide and Sulphites</b>	No

## SUPPLEMENTARY INGREDIENT INFORMATION

<b>Palm Oil</b>	Yes
<b>Hydrogenated Vegetable Oil/Fat</b>	No
<b>GM Protein/DNA</b>	No

ADDITIVES

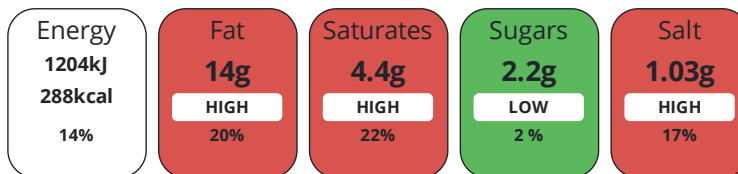
Product Contains:

<b>Artificial Antioxidants</b>	No	<b>Artificial Flavourings</b>	No
<b>Artificial Colours</b>	No	<b>Artificial Preservatives</b>	Yes
<b>Artificial Flavour Enhancers</b>	No	<b>Artificial Sweeteners</b>	No
<b>Vegan Diet</b>	No	<b>Vegetarian Diet</b>	No
<b>Halal Diet</b>	No	<b>Kosher Diet</b>	No

DIET  
SUITABILITY

NUTRITIONAL  
INFORMATION

Each 100g/ml portion contains:



of your reference intake.

Typical values per 100g/ml : Energy 288kcal / 1204kj

Nutrient	per 100g	RI per 100g	per 167g serving	RI per 167g serving
<b>Energy (kj)</b>	1204 kj	14%	2010.7 kj	24%
<b>Energy (kcal)</b>	288 kcal	14%	481 kcal	24%
<b>Fat</b>	14 g	20%	23.4 g	33%
<b>of which Saturates</b>	4.4 g	22%	7.3 g	37%
<b>Carbohydrate</b>	32 g	12%	53.4 g	21%
<b>of which Sugars</b>	2.2 g	2%	3.7 g	4%
<b>Fibre</b>	4.4 g		7.3 g	
<b>Protein</b>	12 g	24%	20 g	40%
<b>Salt</b>	1.03 g	17%	1.7 g	28%
<b>Serving Size</b>	167 g			

SUPPLEMENTARY  
NUTRITIONAL  
INFORMATION

HANDLING & STORAGE INFORMATION

**Directions For Use**

Cooking instructions may vary depending on appliance. These instructions are given as a guide only. Please ensure that the product is piping hot and a core product temperature of 75°C throughout before serving. Ready to Cook Product (RTC). OVEN COOK: Preheat Oven to 180°C/350°F / Gas Mark 4. Place Panini in unopened packaging onto a baking tray. Place the baking tray onto the middle shelf of the pre-heated oven. Cook for 17 minutes. Ensure product reaches a minimum 75°C throughout the product before serving. PANINI GRILL: Preheat grill at 180 °C. Place Panini in unopened packaging on the panini grill. Cook for 10 minutes. Ensure product reaches a minimum 75°C throughout the product before serving. MICROWAVE: Place Panini, in unopened packaging onto a microwaveable plate. Microwave at 1000W for 1 minute. Allow to stand prior to consumption. Ensure product reaches a minimum 75°C throughout the product before serving. TURBOCHEF TORNADO HIGH SPEED OVEN: Place Panini in unopened packaging on a tray. Cook for 1minute 10 seconds. Ensure product reaches a minimum 75oC throughout the product before serving. IR setting 500°C Time - 100%, Air -70%, Microwave- 80% MERRYCHEF E3 275°C - Preheat oven to 275°C. Place Panini in unopened packaging on a tray. Cook for 1 minute 50 seconds. Ensure product reaches a minimum 75°C throughout the product before serving. Fan – High, Microwave -100% 250°C - Preheat oven to 250°C. Place Panini in unopened packaging on a tray. Cook for 1 minute 50 seconds. Ensure product reaches a minimum 75°C throughout the product before serving. Fan – High, Microwave -100%

**Storage Instructions**

Keep Frozen <-18°C To Defrost: Remove product from freezer and place in the fridge. Defrost thoroughly in the fridge at 0-5°C. Allow to fully defrost. Once defrosted, do not refreeze. Maximum shelf life from date of defrosting is 3 days, stored at 0-5°C.

<b>Shelf Life from Time of Production</b>	547 Days	<b>Exempt From Shelf Life Labelling</b>	No
---	----------	---	----

ACCREDITATIONS/ CERTIFICATIONS/ ASSURANCE SCHEMES



ORIGIN

**Product Country of Origin/Place of** Ireland

**Provenance**

PRODUCT CHARACTERISTICS

Standards Testing

<b>Do you undertake trend analysis of microbiological results?</b>	No	<b>Is shelf life testing undertaken?</b>	Yes
--	----	--	-----

Microbiological Standards

Organism	Description	Frequency	Target	Maximum	Sample (g or ml)
Bacillus Cereus (cfu/g or ml)		Monthly	<500	1000	167
E. Coli (cfu/g or ml)		Monthly	<20	100	167
Staphylococcus Aureus (cfu/g or ml)		Monthly	<20	100	167
Salmonella (cfu/g or ml)		Monthly	<0	0	167

CONFIGURATION

Case Configuration

Inner Pack Configuration

**Total Quantity of Inner Components in** 12 Units

**Outer Case**

PRODUCT WEIGHTS

Inner Component

**Variable Weight Consumer Item** No

**Inner Component Weight** 167 g

Outer Case

**Outer Case Gross Weight** 2.24 kg

**Outer Case Net Weight** 2 kg

PRODUCT DIMENSIONS

Inner Component	
<b>Inner Component Depth</b>	245 mm
<b>Inner Component Width</b>	45 mm
<b>Inner Component Height</b>	105 mm
Outer Case	
<b>Outer Case Depth</b>	250 mm
<b>Outer Case Width</b>	190 mm
<b>Outer Case Height</b>	200 mm

PALLET INFORMATION

<b>Quantity of Cases Per Pallet Layer</b>	22 Cases	<b>Pallet Height</b>	1.56 MTR
<b>Quantity of Layers Per Pallet</b>	7 Layers	<b>Pallet Gross Weight</b>	375.16 kg
<b>Quantity of Cases Per Pallet</b>	154 Cases		

PACKAGING

Inner Component Packaging						
Type	Materials	Weight	Recycled Plastic %	Recyclable	Returnable	Composite
Paper/Polyethylene	Plastic	5 g	- %			
Outer Case Packaging						
Type	Materials	Weight	Recycled Plastic %	Recyclable	Returnable	Composite
Case	Paper/Cardboard	180 g	- %			
Transport Packaging						
Type	Materials	Weight	Recycled Plastic %	Recyclable	Returnable	Composite
Other	Plastic	500 g	- %			
Other	Paper/Cardboard	1080 g	- %			

OTHER INFORMATION

<b>Intrastat/Taric Code</b>	1905907000	<b>Identification/Health Marks</b>	IE152EC
-----------------------------	------------	------------------------------------	---------

CONTACT INFORMATION

Address	Technical Contact
Quality Irish Food	Natalia Niespodzianska
Finea, Mullingar, Co. Westmeath, Ireland, N91 H0VH	Specifications Technologist
Mullingar	technical@mrcrumb.ie
Co. Westmeath	
N91 H0VH	<u>P. (Phone)</u> +353436681148
Ireland	
<u>P. (Phone)</u> + 353 (0)43 6681148	

The information on the [Erudus System](#) has been supplied by the manufacturers of the products and, whilst the owners of the Erudus System take steps to ensure the information is regularly updated, they give no warranty and no guarantee that the information is accurate. Product information and ingredients may change, please always read product labels carefully in addition to using the information provided by Erudus.

We do not accept liability for any inaccuracies or incorrect information contained on this site. Please visit <http://www.erudus.com/terms-and-conditions> for full terms and conditions.