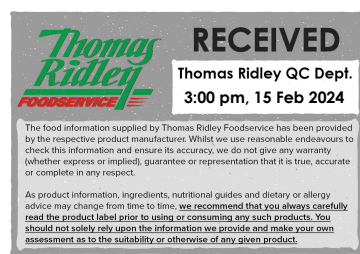


Changed Feb 15, 2024 09:19

Reviewed Feb 15, 2024 09:19

Erudus ID 99946bdc744a4eadac6803aa0884af2e

Version 3.0



08399

# Chilli Chicken & Cheddar Panini 12 x 162g

Chilli Chicken & Cheddar Panini 12x162g

## PRODUCT DESCRIPTION

A stone baked panini hand filled with chicken, tossed in a chilli sauce, topped with mature cheddar cheese.

Brand	Quality Irish Food
Manufacturer Product Code	MRC16622
Product Type	Food
Product Category	Sandwiches
Storage Type	Frozen
Erudus ID	99946bdc744a4eadac6803aa0884af2e
Specification Type	Generic
Inner Component GTIN	5390634003443
Outer Case GTIN	05390634005539



## INGREDIENTS

### Ingredient Declaration

Panini [WHEAT Flour (WHEAT Flour, Calcium Carbonate, Iron, Niacin, Thiamin), Water, Vegetable Oils (Palm, Rapeseed), Sugar, Dried Skimmed MILK, Salt, Yeast, Extra Virgin Olive Oil, Semolina WHEAT, Emulsifier (Mono- and Di-Glycerides of Fatty Acids), WHEAT Gluten, Malted WHEAT Flour, Flour Treatment Agent (Ascorbic Acid)], Chilli Sauce (22%) [Water, Onion, Tomato Puree, Chopped Tomato (Tomato, Tomato Juice, Citric acid), Sugar, Yellow Peppers, Garlic Puree, Cornflour, Garlic Powder, Chilli Powder, Cumin, Ground Coriander, Onion Powder, Black Pepper, Ground Paprika, Cayenne Pepper, Salt, Sage, Oregano, Marjoram, Thyme, Parsley, Basil], Chicken (19%) [Chicken Breast, Salt], Mature Cheddar Cheese (14%) (MILK).

## ALLERGENS

Product Contains:

<b>Celery/Celeriac</b>	No	<b>Mustard</b>	No
<b>Cereals Containing Gluten</b>	Yes	<b>Nuts (Tree)</b>	No
<b>Barley</b>	No	<b>Almond nuts</b>	No
<b>Oats</b>	No	<b>Brazil nuts</b>	No
<b>Rye</b>	No	<b>Cashew nuts</b>	No
<b>Wheat (including Spelt and Khorasan)</b>	Yes	<b>Hazelnuts</b>	No
<b>Crustacea</b>	No	<b>Macadamia (Queensland) nuts</b>	No
<b>Eggs</b>	No	<b>Pecan nuts</b>	No
<b>Fish</b>	No	<b>Pistachio nuts</b>	No
<b>Lupin</b>	No	<b>Walnuts</b>	No
<b>Milk</b>	Yes	<b>Peanuts</b>	No
<b>Molluscs</b>	No	<b>Sesame Seeds</b>	No
		<b>Soybeans</b>	No
		<b>Sulphur Dioxide and Sulphites</b>	No

### Additional Allergen Information

For Allergens, including cereals containing gluten, see ingredients highlighted in bold

SUPPLEMENTARY  
INGREDIENT  
INFORMATION

<b>Palm Oil</b>	Yes
<b>Hydrogenated Vegetable Oil/Fat</b>	No
<b>GM Protein/DNA</b>	No

ADDITIVES

*Product Contains:*

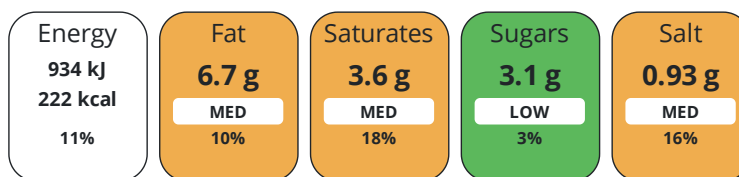
<b>Artificial Antioxidants</b>	No	<b>Artificial Flavourings</b>	No
<b>Artificial Colours</b>	No	<b>Artificial Preservatives</b>	No
<b>Artificial Flavour Enhancers</b>	No	<b>Artificial Sweeteners</b>	No

DIET  
SUITABILITY

<b>Vegan Diet</b>	No	<b>Vegetarian Diet</b>	No
<b>Halal Diet</b>	No	<b>Kosher Diet</b>	No

NUTRITIONAL  
INFORMATION

Each 100g/ml portion contains:



of your reference intake.

Typical values per 100g/ml : Energy 222kcal / 934kJ

Nutrient	per 100g	RI per 100g	per 162g serving	RI per 162g serving
<b>Energy (kJ)</b>	934 kJ	11%	1513.1 kJ	18%
<b>Energy (kcal)</b>	222 kcal	11%	359.6 kcal	18%
<b>Fat</b>	6.7 g	10%	10.9 g	16%
<b>of which Saturates</b>	3.6 g	18%	5.8 g	29%
<b>Carbohydrate</b>	31 g	12%	50.2 g	19%
<b>of which Sugars</b>	3.1 g	3%	5 g	6%
<b>Fibre</b>	4.7 g		7.6 g	
<b>Protein</b>	12 g	24%	19.4 g	39%
<b>Salt</b>	0.93 g	16%	1.5 g	25%
<b>Serving Size</b>	162 g			

SUPPLEMENTARY  
NUTRITIONAL  
INFORMATION

HANDLING &  
STORAGE  
INFORMATION

**Directions For Use**

Cooking instructions may vary depending on appliance. These instructions are given as a guide only. Please ensure that the product is piping hot and a core product temperature of 75°C throughout before serving. Ready to Cook Product (RTC). OVEN COOK: Preheat Oven to 180°C/350°F / Gas Mark 4. Place Panini in unopened packaging onto a baking tray. Place the baking tray onto the middle shelf of the pre-heated oven. Cook for 17 minutes. Ensure product reaches a minimum 75°C throughout the product before serving. PANINI GRILL: Preheat grill at 180 °C. Place Panini in unopened packaging on the panini grill. Cook for 10 minutes. Ensure product reaches a minimum 75°C throughout the product before serving. MICROWAVE: Place Panini, in unopened packaging onto a microwaveable plate. Microwave at 1000W for 1 minute. Allow to stand prior to consumption. Ensure product reaches a minimum 75°C throughout the product before serving. MERRYCHEF E3 250°C - Preheat oven to 250°C. Place Muffin in unopened packaging on a tray. Cook for 1 minute 10 seconds. Ensure product reaches a minimum 75°C throughout the product before serving. Fan – 70%, Microwave -80%

**Storage Instructions**

Keep Frozen <-18°C To Defrost: Remove product from freezer and place in the fridge. Defrost thoroughly in the fridge at 0-5°C. Allow to fully defrost. Once defrosted, do not refreeze. Maximum shelf life from date of defrosting is 3 days, stored at 0-5°C.

<b>Shelf Life from Time of Production</b>	547 Days	<b>Exempt From Shelf Life Labelling</b>	No
---	----------	---	----

ACCREDITATIONS/  
CERTIFICATIONS/  
ASSURANCE  
SCHEMES



ORIGIN

<b>Product Country of Origin/Place of Provenance</b>	Ireland
--	---------

PRODUCT  
CHARACTERISTICS

Standards Testing			
<b>Do you undertake trend analysis of microbiological results?</b>	No	<b>Is shelf life testing undertaken?</b>	Yes

Microbiological Standards

Organism	Description	Frequency	Target	Maximum	Sample (g or ml)
Bacillus Cereus (cfu/g or ml)		Monthly	<500	1000	162
Staphylococcus Aureus (cfu/g or ml)		Monthly	<20	100	162
Salmonella (cfu/g or ml)		Monthly	<0	0	162
E. Coli (cfu/g or ml)		Monthly	<20	100	162

CONFIGURATION

Case Configuration		Inner Pack Configuration	
<b>Total Quantity of Inner Components in Outer Case</b>	12 Units		
<b>Is the Outer Case Splittable?</b>	No		

PRODUCT  
WEIGHTS

Inner Component	
<b>Variable Weight Consumer Item</b>	No
<b>Inner Component Weight</b>	162 g
Outer Case	
<b>Outer Case Gross Weight</b>	2.18 kg
<b>Outer Case Net Weight</b>	1.94 kg

PRODUCT DIMENSIONS

Inner Component	
<b>Inner Component Depth</b>	245 mm
<b>Inner Component Width</b>	45 mm
<b>Inner Component Height</b>	110 mm
Outer Case	
<b>Outer Case Depth</b>	250 mm
<b>Outer Case Width</b>	190 mm
<b>Outer Case Height</b>	200 mm

PALLET INFORMATION

<b>Quantity of Cases Per Pallet Layer</b>	22 Cases	<b>Pallet Height</b>	1.56 MTR
<b>Quantity of Layers Per Pallet</b>	7 Layers	<b>Pallet Gross Weight</b>	335.72 kg
<b>Quantity of Cases Per Pallet</b>	154 Cases		

PACKAGING

Inner Component Packaging						
Type	Materials	Weight	Recycled Plastic %	Recyclable	Returnable	Composite
Paper/Polyethylene	Plastic	5 g	- %			
Outer Case Packaging						
Type	Materials	Weight	Recycled Plastic %	Recyclable	Returnable	Composite
Case	Paper/Cardboard	180 g	- %			
Transport Packaging						
Type	Materials	Weight	Recycled Plastic %	Recyclable	Returnable	Composite
Other	Plastic	500 g	- %			
Other	Paper/Cardboard	1080 g	- %			
Other	Wood	28000 g	- %			

OTHER INFORMATION

<b>Commodity Code</b>	19059080	<b>Identification/Health Marks</b>	IE152EC
-----------------------	----------	------------------------------------	---------

CONTACT INFORMATION

Address	Technical Contact
Quality Irish Food	Natalia Niespodzianska
Finea, Mullingar, Co. Westmeath, Ireland, N91 H0VH	Specifications Technologist
Mullingar	technical@mrcrumb.ie
Co. Westmeath	
N91 H0VH	P: (Phone) +353436681148
Ireland	
P: (Phone) + 353 (0)43 6681148	
Complaints Contact	Commercial Contact
Erisa Troka	Eoin Boyle
Quality Manager	Commercial
qa@mrcrumb.ie	eoin.boyle@mrcrumb.co.uk
P: (Phone) +353436681148	P: (Phone) +353436681148

The information on the [Erudus System](#) has been supplied by the manufacturers of the products and, whilst the owners of the Erudus System take steps to ensure the information is regularly updated, they give no warranty and no guarantee that the information is accurate. Product information and ingredients may change, please always read product labels carefully in addition to using the information provided by Erudus.

We do not accept liability for any inaccuracies or incorrect information contained on this site.  
Please visit <http://www.erudus.com/terms-and-conditions> for full terms and conditions.