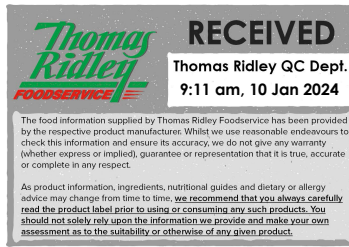


Changed Jan 10, 2024 00:00

Reviewed Jan 09, 2024 15:36

Erudus ID 7b2f5cf73d6749619b943565717af1b0

Version 2.0



Chicken Burrito

Chicken Burrito 12 x 270g

PRODUCT DESCRIPTION

Hand filled tortilla wrap loaded with chicken, chilli sauce, Monterey jack cheese, sweetcorn, black beans & rice

Brand	Quality Irish Food
Manufacturer Product Code	MRC16615.1
Effective Date	Jan 9, 2024
Product Type	Food
Product Category	Sandwiches
Storage Type	Frozen
Erudus ID	7b2f5cf73d6749619b943565717af1b0
Specification Type	Generic
Inner Component GTIN	5390634003085
Outer Case GTIN	05390634005294



INGREDIENTS

Ingredient Declaration

Wrap [Fortified **WHEAT** Flour (**WHEAT** Flour (Calcium Carbonate, Iron, Niacin, Thiamin))] Water, Rapeseed Oil, **Wheat** Fibre, Raising Agents (E500, E450) Salt, Acidity Regulator (E296), Dextrose, **WHEAT** Gluten, Preservative (E282)], Chilli Sauce (20%) [Water, Sweetcorn, Onion, Chopped Tomato (Tomato, Tomato Juice), Tomato Puree, Sugar, Garlic Puree, Yellow Peppers, Cornflour, Garlic Powder, Chilli Powder, Cumin, Ground Coriander, Onion Powder, Black Pepper, Cayenne Pepper, Paprika, Salt, Mixed Herbs, Marjoram, Oregano, Sage, Thyme, Basil, Parsley], Chicken (14%) [Chicken, Water, Salt], Rice [Rice, Water], Black Beans [Black Beans, Water, Salt], **Monterey Jack Cheese (MILK)**.

ALLERGENS

Product Contains:

Celery/Celeriac	No	Mustard	No
Cereals Containing Gluten	Yes	Nuts (Tree)	No
Barley	No	Almond nuts	No
Oats	No	Brazil nuts	No
Rye	No	Cashew nuts	No
Wheat (including Spelt and Khorasan)	Yes	Hazelnuts	No
Crustacea	No	Macadamia (Queensland) nuts	No
Eggs	No	Pecan nuts	No
Fish	No	Pistachio nuts	No
Lupin	No	Walnuts	No
Milk	Yes	Peanuts	No
Molluscs	No	Sesame Seeds	No
		Soybeans	No
		Sulphur Dioxide and Sulphites	No

SUPPLEMENTARY
INGREDIENT
INFORMATION

Palm Oil	Yes
Hydrogenated Vegetable Oil/Fat	No
GM Protein/DNA	No

ADDITIVES

Product Contains:

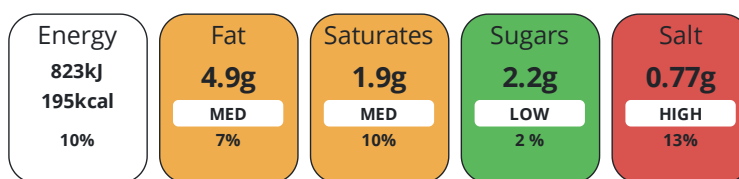
Artificial Antioxidants	No	Artificial Flavourings	No
Artificial Colours	No	Artificial Preservatives	Yes
Artificial Flavour Enhancers	No	Artificial Sweeteners	No

DIET
SUITABILITY

Vegan Diet	No	Vegetarian Diet	No
Halal Diet	No	Kosher Diet	No

NUTRITIONAL
INFORMATION

Each 100g/ml portion contains:



of your reference intake.

Typical values per 100g/ml : Energy 195kcal / 823kj

Nutrient	per 100g	RI per 100g	per 270g serving	RI per 270g serving
Energy (kj)	823 kj	10%	2222.1 kj	26%
Energy (kcal)	195 kcal	10%	526.5 kcal	26%
Fat	4.9 g	7%	13.2 g	19%
of which Saturates	1.9 g	10%	5.1 g	26%
Carbohydrate	27.9 g	11%	75.3 g	29%
of which Sugars	2.2 g	2%	5.9 g	7%
Fibre	2.5 g		6.8 g	
Protein	9.6 g	19%	25.9 g	52%
Salt	0.77 g	13%	2.1 g	35%
Serving Size	270 g			

SUPPLEMENTARY
NUTRITIONAL
INFORMATION

HANDLING &
STORAGE
INFORMATION

Directions For Use

See attached cooking instructions.

Storage Instructions

Keep Frozen <-18 °C To Defrost: Remove product from freezer and place in the fridge. Defrost thoroughly in the fridge at 0-4°C. Allow to fully defrost. Once defrosted, do not refreeze. Maximum shelf life from date of defrosting is 3 days, stored at 0-4°C.

Shelf Life from Time of Production	547 Days	Exempt From Shelf Life Labelling	No
---	----------	---	----

ACCREDITATIONS/
CERTIFICATIONS/
ASSURANCE
SCHEMES



ORIGIN

Product Country of Origin/Place of Provenance	Ireland
--	---------

PRODUCT CHARACTERISTICS

Standards Testing

Do you undertake trend analysis of microbiological results?

No

Is shelf life testing undertaken?

Yes

Microbiological Standards

Organism	Description	Frequency	Target	Maximum	Sample (g or ml)
Bacillus Cereus (cfu/g or ml)		Monthly	<500	1000	270
E. Coli (cfu/g or ml)		Monthly	<20	100	270
Staphylococcus Aureus (cfu/g or ml)		Monthly	<20	100	270
Salmonella (cfu/g or ml)		Monthly	<0	0	270

CONFIGURATION

Case Configuration

Inner Pack Configuration

Total Quantity of Inner Components in Outer Case 12 Units

PRODUCT WEIGHTS

Inner Component

Variable Weight Consumer Item Yes

Outer Case

Outer Case Gross Weight 3.62 kg

Outer Case Net Weight 3.24 kg

PRODUCT DIMENSIONS

Inner Component

Inner Component Depth 260 mm

Inner Component Width 40 mm

Inner Component Height 105 mm

Outer Case

Outer Case Depth 270 mm

Outer Case Width 230 mm

Outer Case Height 185 mm

PALLET INFORMATION

Quantity of Cases Per Pallet Layer 17 Cases

Pallet Height 1.64 MTR

Quantity of Layers Per Pallet 8 Layers

Pallet Gross Weight 521.36 kg

Quantity of Cases Per Pallet 136 Cases

PACKAGING

Inner Component Packaging

Type	Materials	Weight	Recycled Plastic %	Recyclable	Returnable	Composite
Paper/Polyethylene	Plastic	5 g	- %			
Paper/Polyethylene	Paper/Cardboard	8 g	- %			

Outer Case Packaging

Type	Materials	Weight	Recycled Plastic %	Recyclable	Returnable	Composite
Case	Paper/Cardboard	220 g	- %			

Transport Packaging

Type	Materials	Weight	Recycled Plastic %	Recyclable	Returnable	Composite
Other	Plastic	500 g	- %			
Other	Paper/Cardboard	1080 g	- %			
Other	Wood	28000 g	- %			

OTHER
INFORMATION

Intrastat/Taric Code

1905907000

Identification/Health Marks

IE152EC

CONTACT
INFORMATION

Address

Quality Irish Food
Finea, Mullingar, Co. Westmeath, Ireland, N91 H0VH
Mullingar
Co. Westmeath
N91 H0VH
Ireland

P. (Phone) + 353 (0)43 6681148

Technical Contact

Natalia Niespodzianska
Specifications Technologist
technical@mrcrumb.ie

P. (Phone) +353436681148

The information on the [Erudus System](#) has been supplied by the manufacturers of the products and, whilst the owners of the Erudus System take steps to ensure the information is regularly updated, they give no warranty and no guarantee that the information is accurate. Product information and ingredients may change, please always read product labels carefully in addition to using the information provided by Erudus.

We do not accept liability for any inaccuracies or incorrect information contained on this site.
Please visit <http://www.erudus.com/terms-and-conditions> for full terms and conditions.