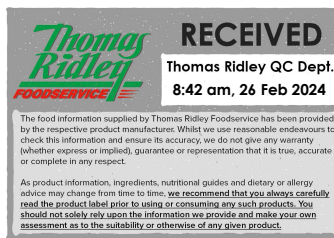


Changed Feb 23, 2024 15:25

Reviewed Feb 23, 2024 15:25

Erudus ID a00517fe29ff42b0b1a56dc44046cc87

Version 2.0



Thomas Ridley
FOODSERVICE

RECEIVED
Thomas Ridley QC Dept.
8:42 am, 26 Feb 2024

The food information supplied by Thomas Ridley Foodservice has been provided by the respective product manufacturer. Whilst we use reasonable endeavours to check this information and ensure its accuracy, we do not give any warranty (whether express or implied), guarantee or representation that it is true, accurate or complete in any respect.

As product information, ingredients, nutritional guides and dietary or allergy advice may change from time to time, we recommend that you always carefully read the product label prior to using or consuming any such products. You should not solely rely upon the information we provide and make your own assessment as to the suitability or otherwise of any given product.



08592

Bottlegreen Elderflower Sparkling Full Bodied 6x750ml

Elderflower Sparkling Full Bodied 6x

PRODUCT DESCRIPTION

Clean elderflower. No taints, well balanced

Brand	Bottlegreen Drinks (SHS Sales & Marketing)
Manufacturer Product Code	BGS750ELDF6S
Product Type	Drink
Product Category	Juices and Cordials
Storage Type	Ambient
Erudus ID	a00517fe29ff42b0b1a56dc44046cc87
Specification Type	Drinks



Inner Component GTIN	5021812000878
Outer Case GTIN	05021812000885



INGREDIENTS

Ingredient Declaration

Carbonated Cotswold spring water, sugar, elderflowers, citric acid, natural flavourings.

ALLERGENS

Product Contains:

Celery/Celериac	No	Mustard	No
Cereals Containing Gluten	No	Nuts (Tree)	No
Barley	No	Almond nuts	No
Oats	No	Brazil nuts	No
Rye	No	Cashew nuts	No
Wheat (including Spelt and Khorasan)	No	Hazelnuts	No
Crustacea	No	Macadamia (Queensland) nuts	No
Eggs	No	Pecan nuts	No
Fish	No	Pistachio nuts	No
Lupin	No	Walnuts	No
Milk	No	Peanuts	No
Molluscs	No	Sesame Seeds	No
		Soybeans	No
		Sulphur Dioxide and Sulphites	No

SUPPLEMENTARY INGREDIENT INFORMATION

Palm Oil	No
Hydrogenated Vegetable Oil/Fat	No
GM Protein/DNA	No

ADDITIVES

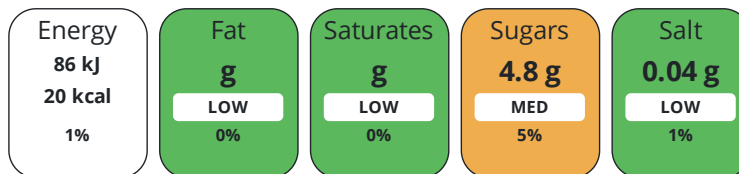
Product Contains:

Artificial Antioxidants	No	Artificial Flavourings	No
Artificial Colours	No	Artificial Preservatives	No
Artificial Flavour Enhancers	No	Artificial Sweeteners	No
Vegan Diet	Suitable for	Vegetarian Diet	Suitable for
Halal Diet	No	Kosher Diet	No

DIET
SUITABILITY

NUTRITIONAL
INFORMATION

Each 100g/ml portion contains:



of your reference intake.

Typical values per 100g/ml : Energy 20kcal / 86kj

Nutrient	per 100ml	RI per 100ml
Energy (kJ)	86 kJ	1%
Energy (kcal)	20 kcal	1%
Fat	0 g	0%
of which Saturates	0 g	0%
of which Mono-unsaturates	0 g	
of which Polyunsaturates	0 g	
Carbohydrate	4.8 g	2%
of which Sugars	4.8 g	5%
of which Polyols	0 g	
of which Starch	0 g	
Fibre	0 g	
Protein	0 g	0%
Salt	0.04 g	1%
Sodium	0 mg	

VITAMINS AND
MINERALS

Nutrient	per 100ml	RI per 100ml
Vitamin A	0 µg	0%
Vitamin C	0 mg	0%
Folate/Folic Acid	0 µg	0%
Calcium	0 mg	0%
Iron	0 mg	0%
Zinc	0 mg	0%

SUPPLEMENTARY
NUTRITIONAL
INFORMATION

Cholesterol per 100 g/ml (UK/FR)	0 g
Trans Fats per 100 g/ml	0 g
Fat Percentage in Dry Matter per 100 g/ml	0 %
Non Milk Extrinsic Sugars per 100 g/ml	0 g

HANDLING & STORAGE INFORMATION

Directions For Use

Contents under pressure. Open with care pointing away from face. Replace lid securely and store as recommended

Storage Instructions

Store in a cool place away from direct sunlight. Refrigerate after opening and consume within 3 days

Shelf Life from Time of Production	450 Days	Exempt From Shelf Life Labelling	No
---	----------	---	----

ACCREDITATIONS/ CERTIFICATIONS/ ASSURANCE SCHEMES



Other Accreditation

No

ORIGIN

Product Country of Origin/Place of Provenance United Kingdom

Additional Origin Details

N/A

PRODUCT CHARACTERISTICS CONFIGURATION

Standards Testing

Case Configuration

Inner Pack Configuration

Total Quantity of Inner Components in Outer Case 6 Units

Is the Outer Case Splittable?

Yes

PRODUCT WEIGHTS

Inner Component

Net Drained Weight 1.298 kg

Outer Case

Outer Case Gross Weight 7.96 kg

Outer Case Net Weight 7.79 kg

PRODUCT DIMENSIONS

Inner Component

Inner Component Depth 88 mm

Inner Component Width 88 mm

Inner Component Height 314 mm

Outer Case

Outer Case Depth 270 mm

Outer Case Width 183 mm

Outer Case Height 320 mm

PALLET INFORMATION

Quantity of Cases Per Pallet Layer 22 Cases

Pallet Height 1.44 MTR

Quantity of Layers Per Pallet 4 Layers

Pallet Gross Weight 730.48 kg

Quantity of Cases Per Pallet 88 Cases

PACKAGING

Inner Component Packaging

Type	Materials	Weight	Recycled Plastic %	Recyclable	Returnable	Composite
Bottle	Plastic	1.17 g	- %			
Bottle	Aluminium	1.66 g	- %			
Bottle	Glass	520 g	- %			

Outer Case Packaging

Type	Materials	Weight	Recycled Plastic %	Recyclable	Returnable	Composite
Case	Paper/Cardboard	230 g	- %			

Transport Packaging

Type	Materials	Weight	Recycled Plastic %	Recyclable	Returnable	Composite
Other	Plastic	22000 g	- %		Yes	

OTHER INFORMATION

Intrastat/Taric Code	0
-----------------------------	---

Manufacturer Comments

N/A

CONTACT INFORMATION

Address

Bottlegreen Drinks (SHS Sales & Marketing)
 SHS Drinks
 Manderson House, 5230 Valiant Court, Delta Way
 Brockworth
 Gloucestershire
 GL3 4FE
 England

P: (Phone) 01452 378500

The information on the [Erudus System](#) has been supplied by the manufacturers of the products and, whilst the owners of the Erudus System take steps to ensure the information is regularly updated, they give no warranty and no guarantee that the information is accurate. Product information and ingredients may change, please always read product labels carefully in addition to using the information provided by Erudus.

We do not accept liability for any inaccuracies or incorrect information contained on this site.
 Please visit <http://www.erudus.com/terms-and-conditions> for full terms and conditions.