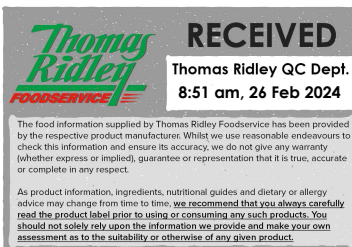


Changed Feb 23, 2024 15:52

Reviewed Feb 23, 2024 15:52

Erudus ID b6f394728c824694b33117a0cf808012

Version 2.0



Thomas Ridley
FOODSERVICE

RECEIVED
Thomas Ridley QC Dept.
8:51 am, 26 Feb 2024

The food information supplied by Thomas Ridley Foodservice has been provided by the respective product manufacturer. Whilst we use reasonable endeavours to check this information and ensure its accuracy, we do not give any warranty (whether express or implied), guarantee or representation that it is true, accurate or complete in any respect.

As product information, ingredients, nutritional guides and dietary or allergy advice may change from time to time, we recommend that you always carefully read the product label prior to using or consuming any such products. You should not solely rely upon the information we provide and make your own assessment as to the suitability or otherwise of any given product.



08594

Bottlegreen Pomegranate & Elderflower Cordial 6x500ml

Pomegranate & Elderflower Cordial 6x

PRODUCT DESCRIPTION

Exotic pomegranate juice and fragrant elderflowers come together to create a delicate subtle yet refreshing long drink.

Brand	Bottlegreen Drinks (SHS Sales & Marketing)
Manufacturer Product Code	BGC500PE6
Product Type	Drink
Product Category	Juices and Cordials
Storage Type	Ambient
Erudus ID	b6f394728c824694b33117a0cf808012
Specification Type	Drinks



Inner Component GTIN	5021812002742
Outer Case GTIN	05021812002759



INGREDIENTS

Ingredient Declaration

Sugar, Cotswold spring water, pomegranate juice from concentrate (17%), fructose, elderflowers, citric acid, aronia juice from concentrate, natural flavourings

ALLERGENS

Product Contains:

Celery/Celeriac	No	Mustard	No
Cereals Containing Gluten	No	Nuts (Tree)	No
Barley	No	Almond nuts	No
Oats	No	Brazil nuts	No
Rye	No	Cashew nuts	No
Wheat (including Spelt and Khorasan)	No	Hazelnuts	No
Crustacea	No	Macadamia (Queensland) nuts	No
Eggs	No	Pecan nuts	No
Fish	No	Pistachio nuts	No
Lupin	No	Walnuts	No
Milk	No	Peanuts	No
Molluscs	No	Sesame Seeds	No
		Soybeans	No
		Sulphur Dioxide and Sulphites	No

SUPPLEMENTARY
INGREDIENT
INFORMATION

Palm Oil	No
Hydrogenated Vegetable Oil/Fat	No
GM Protein/DNA	No

ADDITIVES

Product Contains:

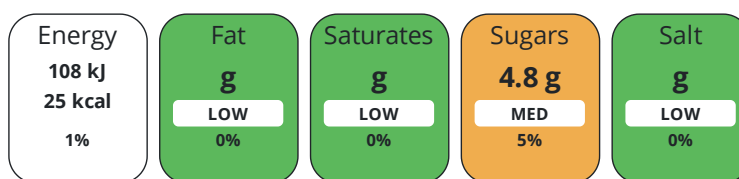
Artificial Antioxidants	No	Artificial Flavourings	No
Artificial Colours	No	Artificial Preservatives	No
Artificial Flavour Enhancers	No	Artificial Sweeteners	No

DIET
SUITABILITY

Vegan Diet	Suitable for	Vegetarian Diet	Suitable for
Halal Diet	No	Kosher Diet	No

NUTRITIONAL
INFORMATION

Each 100g/ml portion contains:



of your reference intake.

Typical values per 100g/ml : Energy 25kcal / 108kj

Nutrient	per 100ml	RI per 100ml
Energy (kJ)	108 kJ	1%
Energy (kcal)	25 kcal	1%
Fat	0 g	0%
of which Saturates	0 g	0%
of which Mono-unsaturates	0 g	
of which Polyunsaturates	0 g	
Carbohydrate	6.3 g	2%
of which Sugars	4.8 g	5%
Fibre	0 g	
Protein	0 g	0%
Salt	0 g	0%
Sodium	0 mg	

SUPPLEMENTARY
NUTRITIONAL
INFORMATION

Cholesterol per 100 g/ml (UK/FR)	0 g
Trans Fats per 100 g/ml	0 g
Fat Percentage in Dry Matter per 100 g/ml	0 %

HANDLING &
STORAGE
INFORMATION

Directions For Use

Dilute 1 : 10

Storage Instructions

Store in a cool place away from direct sunlight. Consume within 1 month of opening

Shelf Life from Time of Production	540 Days	Exempt From Shelf Life Labelling	No
---	----------	---	----

	Other Accreditation						
	n/a						
ORIGIN	Product Country of Origin/Place of Provenance		United Kingdom				
	Additional Origin Details						
	N/A						
PRODUCT CHARACTERISTICS CONFIGURATION	Standards Testing						
	Case Configuration		Inner Pack Configuration				
	Total Quantity of Inner Components in Outer Case		6 Units				
	Is the Outer Case Splittable?		Yes				
PRODUCT WEIGHTS	Inner Component						
	Net Drained Weight		1.02 kg				
	Outer Case						
	Outer Case Gross Weight		6.22 kg				
	Outer Case Net Weight		6.12 kg				
PRODUCT DIMENSIONS	Inner Component						
	Inner Component Depth		77 mm				
	Inner Component Width		77 mm				
	Inner Component Height		296 mm				
	Outer Case						
	Outer Case Depth		234 mm				
	Outer Case Width		160 mm				
	Outer Case Height		305 mm				
PALLET INFORMATION	Quantity of Cases Per Pallet Layer		30 Cases		Pallet Height		1.38 MTR
	Quantity of Layers Per Pallet		4 Layers		Pallet Gross Weight		776.4 kg
	Quantity of Cases Per Pallet		120 Cases				
PACKAGING	Inner Component Packaging						
	Type	Materials	Weight	Recycled Plastic %	Recyclable	Returnable	Composite
	Bottle	Plastic	0.92 g	- %			
	Bottle	Aluminium	3.65 g	- %			
	Bottle	Glass	400 g	- %			
	Outer Case Packaging						
	Type	Materials	Weight	Recycled Plastic %	Recyclable	Returnable	Composite
	Case	Paper/Cardboard	162 g	- %			
OTHER INFORMATION	Manufacturer Comments						
	N/A						

CONTACT
INFORMATION

Address

Bottlegreen Drinks (SHS Sales & Marketing)
SHS Drinks
Manderson House, 5230 Valiant Court, Delta Way
Brockworth
Gloucestershire
GL3 4FE
England

P. (Phone) 01452 378500

The information on the [Erudus System](#) has been supplied by the manufacturers of the products and, whilst the owners of the Erudus System take steps to ensure the information is regularly updated, they give no warranty and no guarantee that the information is accurate. Product information and ingredients may change, please always read product labels carefully in addition to using the information provided by Erudus.

We do not accept liability for any inaccuracies or incorrect information contained on this site.
Please visit <http://www.erudus.com/terms-and-conditions> for full terms and conditions.