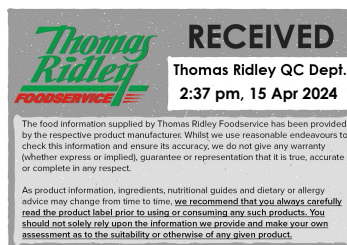


Changed Apr 15, 2024 11:55

Reviewed Apr 15, 2024 11:55

Erudus ID fa9a21887c2e46a49fe009d48cdf5ae9

Version 2.0



08620

Heartsease Farm British Raspberry Lemonade

Sparkling premium presse cans 330ml

Heartsease Farm Sparkling Raspberry Lemonade 12x

PRODUCT DESCRIPTION

A blend of hand-picked British raspberries grown in the neighbouring counties to Heartsease Farm take centre stage in our twist on traditional lemonade. Made with 100% natural ingredients and Radnorshire spring water, this is the perfect long drink which looks as delightful as it tastes. Our growers are all Red Tractor certified, and our fruit is crushed into juice just 40 miles from our farm. - We hope you enjoy them. - Just pure goodness and nothing artificial. - 100% natural. Heartsease Farm tastes beautiful just poured over ice in a tall glass or as a mixer with your favourite spirit. You could always try our 'Raspberry Pitchfork' by adding Gin, Sugar and Bitters mixed with Ice and topped with Raspberry Lemonade.

| | |
|----------------------------------|--|
| Brand | Radnor Hills Mineral Water Company Ltd |
| Manufacturer Product Code | C-HF3SPRL/12 |
| Product Type | Drink |
| Product Category | Juices and Cordials |
| Storage Type | Ambient |
| Erudus ID | fa9a21887c2e46a49fe009d48cdf5ae9 |
| Specification Type | Drinks |



| | |
|-----------------------------|----------------|
| Inner Component GTIN | 5026109009930 |
| Outer Case GTIN | 05026109009947 |



INGREDIENTS

Ingredient Declaration

Carbonated spring water, Sugar, Lemon juice from concentrate (5%), Raspberry Juice (4%), Lemon Comminute, Orange Juice from Concentrate, Flavouring, Carrot and Hibiscus Extracts.

ALLERGENS

Product Contains:

| | | | |
|---|----|--------------------------------------|----|
| Celery/Celeriac | No | Mustard | No |
| Cereals Containing Gluten | No | Nuts (Tree) | No |
| Barley | No | Almond nuts | No |
| Oats | No | Brazil nuts | No |
| Rye | No | Cashew nuts | No |
| Wheat (including Spelt and Khorasan) | No | Hazelnuts | No |
| Crustacea | No | Macadamia (Queensland) nuts | No |
| Eggs | No | Pecan nuts | No |
| Fish | No | Pistachio nuts | No |
| Lupin | No | Walnuts | No |
| Milk | No | Peanuts | No |
| Molluscs | No | Sesame Seeds | No |
| | | Soybeans | No |
| | | Sulphur Dioxide and Sulphites | No |

Additional Allergen Information

N/A

SUPPLEMENTARY INGREDIENT INFORMATION

| | |
|---------------------------------------|----|
| Palm Oil | No |
| Hydrogenated Vegetable Oil/Fat | No |
| GM Protein/DNA | No |

ADDITIVES

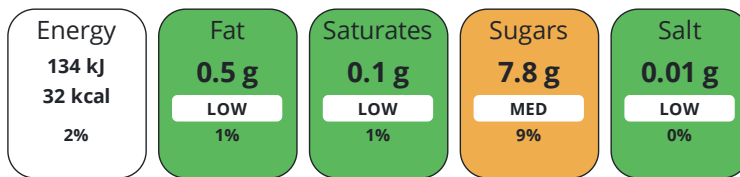
Product Contains:

| | | | |
|-------------------------------------|--------------|---------------------------------|--------------|
| Artificial Antioxidants | No | Artificial Flavourings | No |
| Artificial Colours | No | Artificial Preservatives | No |
| Artificial Flavour Enhancers | No | Artificial Sweeteners | No |
| Vegan Diet | Suitable for | Vegetarian Diet | Suitable for |
| Halal Diet | No | Kosher Diet | No |

DIET SUITABILITY

NUTRITIONAL INFORMATION

Each 100g/ml portion contains:



of your reference intake.

Typical values per 100g/ml : Energy 32kcal / 134kj

| Nutrient | per 100ml | RI per 100ml | per 330ml serving | RI per 330ml serving |
|---------------------------|-----------|--------------|-------------------|----------------------|
| Energy (kJ) | 134 kJ | 2% | 442.2 kJ | 5% |
| Energy (kcal) | 32 kcal | 2% | 105.6 kcal | 5% |
| Fat | < 0.5 g | 1% | 1.7 g | 2% |
| of which Saturates | < 0.1 g | 1% | 0.3 g | 2% |
| Carbohydrate | 7.8 g | 3% | 25.7 g | 10% |
| of which Sugars | 7.8 g | 9% | 25.7 g | 29% |
| Protein | < 0.5 g | 1% | 1.7 g | 3% |
| Salt | < 0.01 g | 0% | - | - |
| Serving Size | 330 ml | | | |

SUPPLEMENTARY
NUTRITIONAL
INFORMATION

HFSS (HIGH IN
FAT, SALT AND
SUGAR)
HANDLING &
STORAGE
INFORMATION

| | | | |
|---|---------------------|---|----|
| HFSS Status | Yes | | |
| Directions For Use | Best Served Chilled | | |
| Storage Instructions | Store Cool and Dry | | |
| Shelf Life from Time of Production | 365 Days | Exempt From Shelf Life Labelling | No |

ACCREDITATIONS/
CERTIFICATIONS/
ASSURANCE
SCHEMES
ORIGIN

| | | | |
|--|-------------------------------|------------------------|--|
| ISO 14001 (Environmental Management) | | BRCGS Certified | |
| Product Country of Origin/Place of Provenance | United Kingdom | | |
| Additional Origin Details | Using British Raspberry Juice | | |

PRODUCT
CHARACTERISTICS

| | | | |
|--|-----|--|-----|
| Standards Testing | | | |
| Do you undertake trend analysis of microbiological results? | Yes | Is shelf life testing undertaken? | Yes |

CONFIGURATION

| | | | |
|---|----------|--------------------------|--|
| Case Configuration | | Inner Pack Configuration | |
| Total Quantity of Inner Components in Outer Case | 12 Units | | |
| Is the Outer Case Splittable? | No | | |

PRODUCT
WEIGHTS

| | | | |
|--------------------------------|---------|--|--|
| Inner Component | | | |
| Outer Case | | | |
| Outer Case Gross Weight | 4.19 kg | | |
| Outer Case Net Weight | 4.15 kg | | |

PRODUCT
DIMENSIONS

| | | | |
|-------------------------------|--------|--|--|
| Inner Component | | | |
| Inner Component Depth | 58 mm | | |
| Inner Component Width | 58 mm | | |
| Inner Component Height | 148 mm | | |
| Outer Case | | | |
| Outer Case Depth | 240 mm | | |
| Outer Case Width | 178 mm | | |
| Outer Case Height | 150 mm | | |

PALLET
INFORMATION

| | | | |
|---|-----------|----------------------------|----------|
| Quantity of Cases Per Pallet Layer | 28 Cases | Pallet Height | 1.51 MTR |
| Quantity of Layers Per Pallet | 8 Layers | Pallet Gross Weight | 968 kg |
| Quantity of Cases Per Pallet | 224 Cases | | |

PACKAGING

| Inner Component Packaging | | | | | | |
|---------------------------|-----------|--------|--------------------|------------|------------|-----------|
| Type | Materials | Weight | Recycled Plastic % | Recyclable | Returnable | Composite |
| Can | Aluminium | 12.3 g | - % | | | |

Outer Case Packaging

| Type | Materials | Weight | Recycled Plastic % | Recyclable | Returnable | Composite |
|------|-----------------|--------|--------------------|------------|------------|-----------|
| Case | Plastic | 42.3 g | - % | | | |
| Case | Paper/Cardboard | 30.5 g | - % | | | |

Transport Packaging

| Type | Materials | Weight | Recycled Plastic % | Recyclable | Returnable | Composite |
|-------|-----------|---------|--------------------|------------|------------|-----------|
| Other | Plastic | 1180 g | - % | | | |
| Other | Wood | 25000 g | - % | | | |

OTHER
INFORMATION
CONTACT
INFORMATION

Address

Radnor Hills Mineral Water Company Ltd
Radnor Hills Mineral Water Company LTD
Heartsease, Stannage
Knighton
Powys
LD7 1LU
United Kingdom

P: (Phone) 01547530220

The information on the [Erudus System](#) has been supplied by the manufacturers of the products and, whilst the owners of the Erudus System take steps to ensure the information is regularly updated, they give no warranty and no guarantee that the information is accurate. Product information and ingredients may change, please always read product labels carefully in addition to using the information provided by Erudus.

We do not accept liability for any inaccuracies or incorrect information contained on this site.
Please visit <http://www.erudus.com/terms-and-conditions> for full terms and conditions.