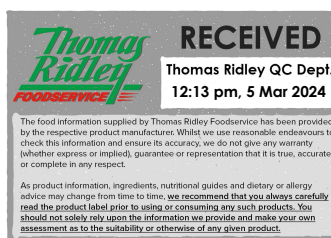


08745



Protein Packed with salted caramel and peanuts PSC 12x45g

Protein Packed With Salted Caramel And Peanuts Psc 12x45g

PRODUCT DESCRIPTION

A bar of nuts and dried fruit with caramel.

Brand	RM Curtis & Co Ltd
Manufacturer Product Code	252300
Product Type	Food
Product Category	Nuts and Seeds
Storage Type	Ambient
Erudus ID	40e097633f924c3cb9975fbecf538cc2
Specification Type	Legacy

Inner Component GTIN	96181072
Outer Case GTIN	5013803001018



INGREDIENTS

Ingredient Declaration

PEANUTS 51%, glucose syrup, **SOYA** protein crispies 10% (**SOYA** protein isolate, tapioca starch, salt), dates 9%, honey, **ALMONDS** 6%, salted caramel 3% (muscovado sugar, **BUTTERMILK** powder, natural flavourings, cream powder (**MILK**), rice flour, carob flour, salt).

ALLERGENS

Product Contains:

Celery/Celery	No	Mustard	No
Cereals Containing Gluten	No	Nuts (Tree)	Yes
Barley	No	Almond nuts	Yes
Oats	No	Brazil nuts	May Contain
Rye	No	Cashew nuts	May Contain
Wheat (including Spelt and Khorasan)	No	Hazelnuts	May Contain
Crustacea	No	Macadamia (Queensland) nuts	May Contain
Eggs	No	Pecan nuts	May Contain
Fish	No	Pistachio nuts	May Contain
Lupin	No	Walnuts	May Contain
Milk	Yes	Peanuts	Yes
Molluscs	No	Sesame Seeds	May Contain
		Soybeans	Yes
		Sulphur Dioxide and Sulphites	No

Risk Source:

SUPPLEMENTARY INGREDIENT INFORMATION

Palm Oil	No
Hydrogenated Vegetable Oil/Fat	No
GM Protein/DNA	No

ADDITIVES

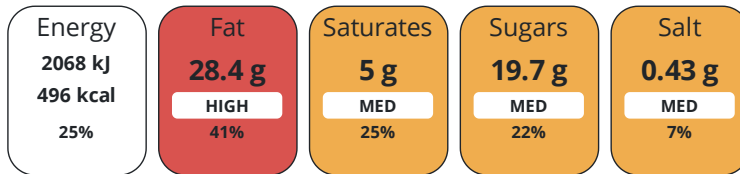
Product Contains:

Artificial Antioxidants	No	Artificial Flavourings	No
Artificial Colours	No	Artificial Preservatives	No
Artificial Flavour Enhancers	No	Artificial Sweeteners	No
Suitable for Coeliacs	Yes	Halal Diet	No
Kosher Diet	No	Vegetarian Diet	Suitable for
Vegan Diet	No		

DIET SUITABILITY

NUTRITIONAL INFORMATION

Each 100g/ml portion contains:



of your reference intake.

Typical values per 100g/ml : Energy 496kcal / 2068kJ

Nutrient	per 100g/ml	RI per 100g/ml
Energy (kJ)	2068 kJ	25%
Energy (kcal)	496 kcal	25%
Fat	28.4 g	41%
of which Saturates	5 g	25%
Carbohydrate	31.3 g	12%
of which Sugars	19.7 g	22%
Fibre	5.4 g	
Protein	26 g	52%
Salt	0.43 g	7%

SUPPLEMENTARY NUTRITIONAL INFORMATION

HFSS (HIGH IN FAT, SALT AND SUGAR) HANDLING & STORAGE INFORMATION

HFSS Status	Yes
Directions For Use	Ready to eat.
Storage Instructions	Store in a cool dry place.
Shelf Life from Time of Production	270 Days

ACCREDITATIONS/ CERTIFICATIONS/ ASSURANCE SCHEMES



ORIGIN

Product Country of Origin/Place of Provenance	United Kingdom
--	----------------

PRODUCT CHARACTERISTICS

Standards Testing	
Do you undertake trend analysis of microbiological results?	Yes
Is shelf life testing undertaken?	Yes

Microbiological Standards

Organism	Description	Frequency	Target	Maximum	Sample (g or ml)
E. Coli (cfu/g or ml)		Annually	<10	100	-
Enterobacteriaceae (cfu/g or ml)		Annually	<10	10000	-
Total Viable Count (TVC) (cfu/g or ml)		Annually	<100000	100000	-
Salmonella (cfu/g or ml)		Annually	<0	0	25
Yeast (cfu/g or ml)		Annually	<10000	10000	-
Moulds (cfu/g or ml)		Annually	<10000	10000	-

CONFIGURATION

Case Configuration

Inner Pack Configuration

Total Quantity of Inner Components in 12 Units

Outer Case

Is the Outer Case Splittable? Yes

PRODUCT WEIGHTS

Inner Component

Variable Weight Consumer Item No

Weight/Volume

12x45g

Outer Case

Outer Case Gross Weight 0.54 kg

Outer Case Net Weight 0.59 kg

PRODUCT DIMENSIONS

Inner Component

Inner Component Depth 140 mm

Inner Component Width 40 mm

Inner Component Height 20 mm

Outer Case

Outer Case Depth 185 mm

Outer Case Width 140 mm

Outer Case Height 75 mm

PALLET INFORMATION

Quantity of Cases Per Pallet Layer 108 Cases

Pallet Height 1.5 MTR

Quantity of Layers Per Pallet 5 Layers

Pallet Gross Weight 810 kg

Quantity of Cases Per Pallet 540 Cases

PACKAGING

Inner Component Packaging

Type	Materials	Weight	Recycled Plastic %	Recyclable	Returnable	Composite
Film	Plastic	2 g	- %			

Outer Case Packaging

Type	Materials	Weight	Recycled Plastic %	Recyclable	Returnable	Composite
Case	Paper/Cardboard	330 g	- %			

Transport Packaging

Type	Materials	Weight	Recycled Plastic %	Recyclable	Returnable	Composite
Other	Wood	25000 g	- %		Yes	

OTHER
INFORMATION

Manufacturer Comments

n/a

CONTACT
INFORMATION

Address

RM Curtis & Co Ltd
10/12
Second Ave
Halstead
CO9 2SU
England

P: (Phone) 01787 273 811

The information on the [Erudus System](#) has been supplied by the manufacturers of the products and, whilst the owners of the Erudus System take steps to ensure the information is regularly updated, they give no warranty and no guarantee that the information is accurate. Product information and ingredients may change, please always read product labels carefully in addition to using the information provided by Erudus.

We do not accept liability for any inaccuracies or incorrect information contained on this site.
Please visit <http://www.erudus.com/terms-and-conditions> for full terms and conditions.