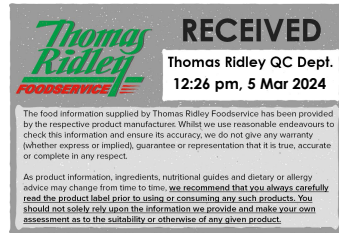


08746



# Eat Natural Dark Chocolate with Cranberries and Macadamia (CMD) 12 x 45g

Dark Chocolate With Cranberries And Macadamia 12x

## PRODUCT DESCRIPTION

12 bars of nuts and dried fruit with dark chocolate.

Brand	Ferrero UK Ltd
Manufacturer Product Code	257850
Product Type	Food
Product Category	Nuts and Seeds
Storage Type	Ambient
Erudus ID	81c4235f07e849e7889b4d8a342d92f0
Specification Type	Legacy



Inner Component GTIN	50663811
Outer Case GTIN	5013803622107



## INGREDIENTS

### Ingredient Declaration

Shredded coconut 21%, dark chocolate 20% (cocoa mass, sugar, cocoa butter, emulsifier: **SOYA** lecithin), sultanas 16%, glucose syrup, crisped rice (rice, sugar), dried cranberries 8% (cranberries, sugar, sunflower oil), honey, **MACADAMIA NUTS** 6%.

## ALLERGENS

Product Contains:

<b>Celery/Celeriac</b>	No	<b>Mustard</b>	No
<b>Cereals Containing Gluten</b>	No	<b>Nuts (Tree)</b>	Yes
<b>Barley</b>	No	<b>Almond nuts</b>	May Contain
<b>Oats</b>	No	<b>Brazil nuts</b>	No
<b>Rye</b>	No	<b>Cashew nuts</b>	May Contain
<b>Wheat (including Spelt and Khorasan)</b>	No	<b>Hazelnuts</b>	May Contain
<b>Crustacea</b>	No	<b>Macadamia (Queensland) nuts</b>	Yes
<b>Eggs</b>	No	<b>Pecan nuts</b>	May Contain
<b>Fish</b>	No	<b>Pistachio nuts</b>	No
<b>Lupin</b>	No	<b>Walnuts</b>	May Contain
<b>Milk</b>	May Contain	<b>Peanuts</b>	May Contain
<b>Molluscs</b>	No	<b>Sesame Seeds</b>	May Contain
		<b>Soybeans</b>	Yes
		<b>Sulphur Dioxide and Sulphites</b>	No

Risk Source:

### Additional Allergen Information

For allergens, see ingredients in BOLD CAPITALS. May also contain: Other nuts, peanuts, sesame seeds and cow's milk.

## SUPPLEMENTARY INGREDIENT INFORMATION

<b>GM Protein/DNA</b>	No
-----------------------	----

ADDITIVES

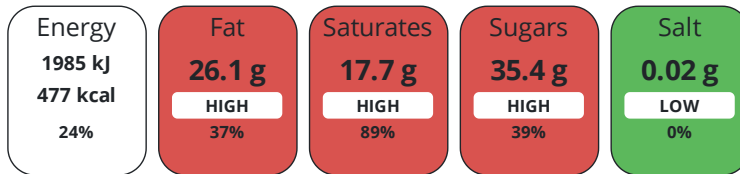
Product Contains:

<b>Artificial Antioxidants</b>	No	<b>Artificial Flavourings</b>	No
<b>Artificial Colours</b>	No	<b>Artificial Preservatives</b>	No
<b>Artificial Flavour Enhancers</b>	No	<b>Artificial Sweeteners</b>	No
<b>Suitable for Coeliacs</b>	No	<b>Halal Diet</b>	No
<b>Kosher Diet</b>	No	<b>Vegetarian Diet</b>	Suitable for
<b>Vegan Diet</b>	No		

DIET SUITABILITY

NUTRITIONAL INFORMATION

Each 100g/ml portion contains:



of your reference intake.

Typical values per 100g/ml : Energy 477kcal / 1985kj

Nutrient	per 100g/ml	RI per 100g/ml	per 45g/ml serving	RI per 45g/ml serving
<b>Energy (kJ)</b>	1985 kJ	24%	893.3 kJ	11%
<b>Energy (kcal)</b>	477 kcal	24%	214.7 kcal	11%
<b>Fat</b>	26.1 g	37%	11.7 g	17%
<b>of which Saturates</b>	17.7 g	89%	8 g	40%
<b>Carbohydrate</b>	52.4 g	20%	23.6 g	9%
<b>of which Sugars</b>	35.4 g	39%	15.9 g	18%
<b>Fibre</b>	7.6 g		3.4 g	
<b>Protein</b>	4.3 g	9%	1.9 g	4%
<b>Salt</b>	0.02 g	0%	-	
<b>Serving Size</b>	45 g			

SUPPLEMENTARY NUTRITIONAL INFORMATION

HANDLING & STORAGE INFORMATION

**Directions For Use**

For allergens, see ingredients in BOLD CAPITALS. Warning. whilst we make every effort, we cannot guarantee that nutshell fragments will not find their way into this bar.

**Storage Instructions**

Store in a cool dry place.

**Shelf Life from Time of Production** 273 Days

ORIGIN

**Product Country of Origin/Place of Provenance** United Kingdom

PRODUCT CHARACTERISTICS

Standards Testing

<b>Do you undertake trend analysis of microbiological results?</b>	No	<b>Is shelf life testing undertaken?</b>	No
--	----	--	----

CONFIGURATION

Case Configuration Inner Pack Configuration

**Total Quantity of Inner Components in Outer Case** 12 Units

PRODUCT WEIGHTS

Inner Component	
<b>Variable Weight Consumer Item</b>	No
<b>Weight/Volume</b>	
12 x 45g	
Outer Case	
<b>Outer Case Gross Weight</b>	0.59 kg
<b>Outer Case Net Weight</b>	0.54 kg

PRODUCT DIMENSIONS

Inner Component	
<b>Inner Component Depth</b>	140 mm
<b>Inner Component Width</b>	40 mm
<b>Inner Component Height</b>	20 mm
Outer Case	
<b>Outer Case Depth</b>	185 mm
<b>Outer Case Width</b>	140 mm
<b>Outer Case Height</b>	75 mm

PALLET INFORMATION

<b>Quantity of Cases Per Pallet Layer</b>	108 Cases	<b>Pallet Height</b>	2.16 MTR
<b>Quantity of Layers Per Pallet</b>	5 Layers		
<b>Quantity of Cases Per Pallet</b>	540 Cases		

PACKAGING

Outer Case Packaging						
Type	Materials	Weight	Recycled Plastic %	Recyclable	Returnable	Composite
Case	Paper/Cardboard	54 g	- %			

OTHER INFORMATION CONTACT INFORMATION

Address  
 Ferrero UK Ltd  
 889 Greenford Rd  
 Greenford  
 UB6 0HE  
 England

P: (Phone) 07927565564

The information on the [Erudus System](#) has been supplied by the manufacturers of the products and, whilst the owners of the Erudus System take steps to ensure the information is regularly updated, they give no warranty and no guarantee that the information is accurate. Product information and ingredients may change, please always read product labels carefully in addition to using the information provided by Erudus.

We do not accept liability for any inaccuracies or incorrect information contained on this site. Please visit <http://www.erudus.com/terms-and-conditions> for full terms and conditions.