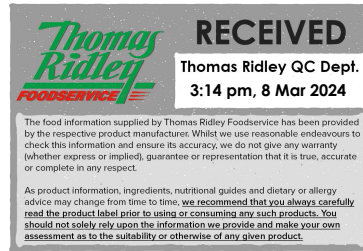


Changed Mar 08, 2024 13:03

Reviewed Mar 08, 2024 13:03

Erudus ID 8759d3b932fc42aabe7a9ac0eb3d9acd

Version 2.3



08787

# Wenlock Spring Still 500ml PET Sports cap

Still Spring Water 24x500g

## PRODUCT DESCRIPTION

Still Spring Water

Brand	Wenlock Spring Water
Manufacturer Product Code	1008
Effective Date	Mar 8, 2024
Product Type	Drink
Product Category	Juices and Cordials
Storage Type	Ambient
Erudus ID	8759d3b932fc42aabe7a9ac0eb3d9acd
Specification Type	Drinks
Inner Component GTIN	5018730000226
Outer Case GTIN	05018730000165



## INGREDIENTS

### Ingredient Declaration

Wenlock Spring Water

## ALLERGENS

Product Contains:

<b>Celery/Celeriac</b>	No	<b>Mustard</b>	No
<b>Cereals Containing Gluten</b>	No	<b>Nuts (Tree)</b>	No
<b>Barley</b>	No	<b>Almond nuts</b>	No
<b>Oats</b>	No	<b>Brazil nuts</b>	No
<b>Rye</b>	No	<b>Cashew nuts</b>	No
<b>Wheat (including Spelt and Khorasan)</b>	No	<b>Hazelnuts</b>	No
<b>Crustacea</b>	No	<b>Macadamia (Queensland) nuts</b>	No
<b>Eggs</b>	No	<b>Pecan nuts</b>	No
<b>Fish</b>	No	<b>Pistachio nuts</b>	No
<b>Lupin</b>	No	<b>Walnuts</b>	No
<b>Milk</b>	No	<b>Peanuts</b>	No
<b>Molluscs</b>	No	<b>Sesame Seeds</b>	No
		<b>Soybeans</b>	No
		<b>Sulphur Dioxide and Sulphites</b>	No

## SUPPLEMENTARY INGREDIENT INFORMATION

<b>Palm Oil</b>	No
<b>Hydrogenated Vegetable Oil/Fat</b>	No
<b>GM Protein/DNA</b>	No

ADDITIVES

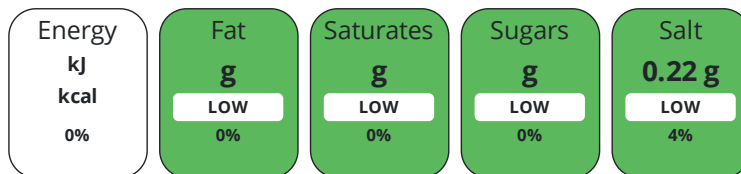
Product Contains:

<b>Artificial Antioxidants</b>	No	<b>Artificial Flavourings</b>	No
<b>Artificial Colours</b>	No	<b>Artificial Preservatives</b>	No
<b>Artificial Flavour Enhancers</b>	No	<b>Artificial Sweeteners</b>	No
<b>Vegan Diet</b>	Suitable for	<b>Vegetarian Diet</b>	Suitable for
<b>Halal Diet</b>	No	<b>Kosher Diet</b>	No

DIET  
SUITABILITY

NUTRITIONAL  
INFORMATION

Each 100g/ml portion contains:



of your reference intake.

Typical values per 100g/ml : Energy kcal / kj

Nutrient	per 100ml	RI per 100ml
<b>Energy (kj)</b>	0 kj	0%
<b>Energy (kcal)</b>	0 kcal	0%
<b>Fat</b>	0 g	0%
<b>of which Saturates</b>	0 g	0%
<b>of which Mono-unsaturates</b>	0 g	
<b>of which Polyunsaturates</b>	0 g	
<b>Carbohydrate</b>	0 g	0%
<b>of which Sugars</b>	0 g	0%
<b>of which Polyols</b>	0 g	
<b>of which Starch</b>	0 g	
<b>Fibre</b>	0 g	
<b>Protein</b>	0 g	0%
<b>Salt</b>	0.22 g	4%
<b>Sodium</b>	220 mg	

VITAMINS AND  
MINERALS

Nutrient	per 100ml	RI per 100ml
<b>Vitamin A</b>	0 µg	0%
<b>Vitamin C</b>	0 mg	0%
<b>Folate/Folic Acid</b>	0 µg	0%
<b>Calcium</b>	0.86 mg	0%
<b>Iron</b>	0 mg	0%
<b>Zinc</b>	0 mg	0%

SUPPLEMENTARY  
NUTRITIONAL  
INFORMATION

<b>Cholesterol per 100 g/ml (UK/FR)</b>	0 g
<b>Trans Fats per 100 g/ml</b>	0 g
<b>Fat Percentage in Dry Matter per 100 g/ml</b>	0 %
<b>Non Milk Extrinsic Sugars per 100 g/ml</b>	0 g

HANDLING &  
STORAGE  
INFORMATION

**Directions For Use**

Best served chilled

**Storage Instructions**

Store in a clean cool dry place away from sunlight strong odours and chemicals

<b>Shelf Life from Time of Production</b>	730 Days	<b>Exempt From Shelf Life Labelling</b>	No
---	----------	---	----

ACCREDITATIONS/  
CERTIFICATIONS/  
ASSURANCE  
SCHEMES



ORIGIN

**Product Country of Origin/Place of** United Kingdom

**Provenance**

PRODUCT  
CHARACTERISTICS

Standards Testing

<b>Do you undertake trend analysis of microbiological results?</b>	Yes	<b>Is shelf life testing undertaken?</b>	Yes
--	-----	--	-----

Microbiological Standards

Organism	Description	Frequency	Target	Maximum	Sample (g or ml)
Coliforms (cfu/g or ml)		Daily	=0	0	250
E. Coli (cfu/g or ml)		Daily	=0	0	250
Total Viable Count (TVC) (cfu/g or ml)	37°C / no abnormal change	Weekly	=0	20	1

Analytical Standards

Test	Description	Frequency	Target	Range	Sample (g or ml)
pH		Daily	=7.5	7.2 to 7.7	100

CONFIGURATION

Case Configuration

Inner Pack Configuration

**Total Quantity of Inner Components in** 24 Units

**Outer Case**

**Is the Outer Case Splittable?** No

PRODUCT  
WEIGHTS

Inner Component

**Inner Component Weight** 500 g

Outer Case

**Outer Case Gross Weight** 12.78 kg

**Outer Case Net Weight** 12 kg

PRODUCT  
DIMENSIONS

Inner Component

**Inner Component Depth** 62 mm

**Inner Component Width** 62 mm

**Inner Component Height** 214 mm

Outer Case

**Outer Case Depth** 372 mm

**Outer Case Width** 248 mm

**Outer Case Height** 231 mm

PALLET  
INFORMATION

**Quantity of Cases Per Pallet Layer** 13 Cases **Pallet Height** 1.54 MTR

**Quantity of Layers Per Pallet** 6 Layers **Pallet Gross Weight** 1021 kg

**Quantity of Cases Per Pallet** 78 Cases

## PACKAGING

## Inner Component Packaging

Type	Materials	Weight	Recycled Plastic %	Recyclable	Returnable	Composite
Bottle	Plastic / PET (Polyethylene Terethphalate)	13.5 g	30 %			
Cap	Plastic	6.2 g	0 %			
Label	Plastic	3 g	30 %			

## Outer Case Packaging

Type	Materials	Weight	Recycled Plastic %	Recyclable	Returnable	Composite
Case	Plastic	27.5 g	0.00 %			
Label	Paper/Cardboard	0.3 g	- %			

## Transport Packaging

Type	Materials	Weight	Recycled Plastic %	Recyclable	Returnable	Composite
Layer Card	Paper/Cardboard	1714 g	- %			
Pallet	Wood	20000 g	- %			
Label	Paper/Cardboard	2.6 g	- %			
Pallet Wrap	Plastic	266 g	- %			

OTHER  
INFORMATION

**Commodity Code** 2202100000

CONTACT  
INFORMATION

## Address

Wenlock Spring Water  
Wolverton  
Church Stretton  
Shropshire  
SY6 6RR  
United Kingdom

## Technical Contact

Flavius Ion  
Quality Manager  
flaviusion@wenlockspring.co.uk  
  
P: (Phone) 01694731206

P: (Phone) 01694 781277

## Complaints Contact

Flavius Ion  
Quality Manager  
flaviusion@wenlockspring.co.uk

P: (Phone) 01694731206

The information on the [Erudus System](#) has been supplied by the manufacturers of the products and, whilst the owners of the Erudus System take steps to ensure the information is regularly updated, they give no warranty and no guarantee that the information is accurate. Product information and ingredients may change, please always read product labels carefully in addition to using the information provided by Erudus.

We do not accept liability for any inaccuracies or incorrect information contained on this site.  
Please visit <http://www.erudus.com/terms-and-conditions> for full terms and conditions.