


Changed Feb 13, 2024 08:33

Reviewed Feb 13, 2024 08:33

Erudus ID 72e93b2aa6d341fbbbc8581c09a17d78

Version 2.0



RECEIVED
Thomas Ridley QC Dept.
10:03 am, 13 Feb 2024

The food information supplied by Thomas Ridley Foodservice has been provided by the respective product manufacturers. Whilst we use reasonable endeavours to check this information and ensure its accuracy, we do not give any warranty (whether express or implied), guarantee or representation that it is true, accurate or complete in any respect.

As product information, ingredients, nutritional guides and dietary or allergy advice may change from time to time, we recommend that you always carefully read the product label prior to using or consuming any such products. You should not solely rely upon the information we provide and make your own assessment as to the suitability or otherwise of any given product.



JUICEBURST™ 500ml WATERMELON & RASPBERRY

Watermelon And Raspberry Flavoured White Grape Based Juice Drink With Sweetener 12x

PRODUCT DESCRIPTION

Watermelon and raspberry flavoured white grape based juice drink with sweetener

Brand	Purity Soft Drinks Ltd
Manufacturer Product Code	JBURSTWATRAS500ML
Product Type	Drink
Product Category	Juices and Cordials
Storage Type	Ambient
Erudus ID	72e93b2aa6d341fbbbc8581c09a17d78
Specification Type	Drinks
Inner Component GTIN	5038512000756
Outer Case GTIN	05038512000763



INGREDIENTS

Ingredient Declaration

Water, Fruit Juices from Concentrate: White Grape (41.5%), Melon (1.9%), Raspberry (1.9%). Black carrot concentrate, Natural watermelon flavouring and other natural flavourings, Acid: Citric acid. Sweetener: Steviol glycosides. Preservative: Potassium sorbate.

ALLERGENS

Product Contains:

Celery/Celeriac	No	Mustard	No
Cereals Containing Gluten	No	Nuts (Tree)	No
Barley	No	Almond nuts	No
Oats	No	Brazil nuts	No
Rye	No	Cashew nuts	No
Wheat (including Spelt and Khorasan)	No	Hazelnuts	No
Crustacea	No	Macadamia (Queensland) nuts	No
Eggs	No	Pecan nuts	No
Fish	No	Pistachio nuts	No
Lupin	No	Walnuts	No
Milk	No	Peanuts	No
Molluscs	No	Sesame Seeds	No
		Soybeans	No
		Sulphur Dioxide and Sulphites	No

SUPPLEMENTARY INGREDIENT INFORMATION

Palm Oil	No
Hydrogenated Vegetable Oil/Fat	No
GM Protein/DNA	No

ADDITIVES

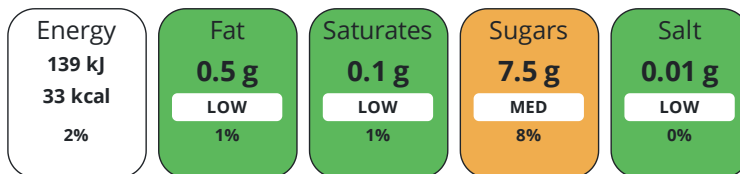
Product Contains:

Artificial Antioxidants	No	Artificial Flavourings	No
Artificial Colours	No	Artificial Preservatives	Yes
Artificial Flavour Enhancers	No	Artificial Sweeteners	No
Vegan Diet	Suitable for	Vegetarian Diet	Suitable for
Halal Diet	No	Kosher Diet	No

DIET
SUITABILITY

NUTRITIONAL
INFORMATION

Each 100g/ml portion contains:



of your reference intake.

Typical values per 100g/ml : Energy 33kcal / 139kj

Nutrient	per 100ml	RI per 100ml
Energy (kJ)	139 kJ	2%
Energy (kcal)	33 kcal	2%
Fat	< 0.5 g	1%
of which Saturates	< 0.1 g	1%
Carbohydrate	7.6 g	3%
of which Sugars	7.5 g	8%
Fibre	< 0.5 g	
Protein	< 0.5 g	1%
Salt	< 0.01 g	0%

SUPPLEMENTARY
NUTRITIONAL
INFORMATION

HANDLING &
STORAGE
INFORMATION

Directions For Use

For oral consumption

Storage Instructions

Ambient-stable. Store in cool, dry conditions, and away from strong light sources. Best served chilled and shake well before use. Once opened keep in the fridge and consume within 3 days. Stored as tertiary package: pallets must not be stored on top of each other.

Shelf Life from Time of Production	365 Days	Exempt From Shelf Life Labelling	No
---	----------	---	----

ACCREDITATIONS/
CERTIFICATIONS/
ASSURANCE
SCHEMES



Other Accreditation

None

ORIGIN

Product Country of Origin/Place of Not Specified

Provenance

Additional Origin Details

Bottled in UK. No compulsory or voluntary country of origin labelling present.

PRODUCT CHARACTERISTICS

Standards Testing

Do you undertake trend analysis of microbiological results? Yes

Is shelf life testing undertaken? Yes

Microbiological Standards

Organism	Description	Frequency	Target	Maximum	Sample (g or ml)
Total Viable Count (TVC) (cfu/g or ml)		Every Batch	<1	0	5
Yeast (cfu/g or ml)		Every Batch	<1	0	5
Moulds (cfu/g or ml)		Every Batch	<1	0	5

Analytical Standards

Test	Description	Frequency	Target	Range	Sample (g or ml)
Acidity (%)		Every Batch	=0.19	0.14 to 0.24	10
Brix °Bx		Every Batch	=7.2	7 to 7.4	1
pH		Every Batch	<4	0 to 4	500

CONFIGURATION

Case Configuration

Inner Pack Configuration

Total Quantity of Inner Components in Outer Case 12 Units

Is the Outer Case Splittable? No

PRODUCT WEIGHTS

Inner Component

Outer Case

Outer Case Gross Weight 6.6 kg

Outer Case Net Weight 6.3 kg

PRODUCT DIMENSIONS

Inner Component

Inner Component Depth 66 mm

Inner Component Width 66 mm

Inner Component Height 187 mm

Outer Case

Outer Case Depth 269 mm

Outer Case Width 204 mm

Outer Case Height 192 mm

PALLET INFORMATION

Quantity of Cases Per Pallet Layer 22 Cases

Pallet Height 1.32 MTR

Quantity of Layers Per Pallet 6 Layers

Pallet Gross Weight 908 kg

Quantity of Cases Per Pallet 132 Cases

PACKAGING

Inner Component Packaging

Type	Materials	Weight	Recycled Plastic %	Recyclable	Returnable	Composite
Bottle	Plastic	23.3 g	- %			

Outer Case Packaging

Type	Materials	Weight	Recycled Plastic %	Recyclable	Returnable	Composite
Case	Plastic	20 g	- %			
Case	Paper/Cardboard	1 g	- %			

Transport Packaging

Type	Materials	Weight	Recycled Plastic %	Recyclable	Returnable	Composite
Other	Plastic	500 g	- %			
Other	Paper/Cardboard	1001 g	- %			
Other	Wood	30000 g	- %			

OTHER INFORMATION

Manufacturer Comments

1 bottle provides 1 of your 5 daily portions of fruit and vegetables No Added Sugar (Contains naturally occurring sugars) No artificial colours, flavours or sweeteners Bottled in UK

CONTACT INFORMATION

Address

Purity Soft Drinks Ltd
Douglas House
Mounts Road
Wednesbury
West Midlands
WS10 0BU
England

P: (Phone) 01215057585

The information on the [Erudus System](#) has been supplied by the manufacturers of the products and, whilst the owners of the Erudus System take steps to ensure the information is regularly updated, they give no warranty and no guarantee that the information is accurate. Product information and ingredients may change, please always read product labels carefully in addition to using the information provided by Erudus.

We do not accept liability for any inaccuracies or incorrect information contained on this site.
Please visit <http://www.erudus.com/terms-and-conditions> for full terms and conditions.