

Changed Feb 13, 2024 11:51

Reviewed Feb 13, 2024 11:52

Erudus ID 7e7df1e219684f799a270a7f20661a6c

Version 2.0

08835

# Spiced Pear, Toffee & Cranberry Gateau Pre-Cut 1 x 14 Portions

Spiced Pear, Toffee & Cranberry Gateau Pre-cut 1x1.6kg

## PRODUCT DESCRIPTION

White chocolate truffle layered with toffee sponge, cranberry compote and spiced pears. Finished with pears, cranberry and toffee.

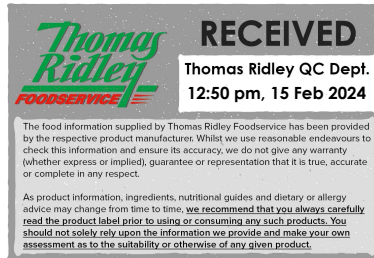
Brand	Chantilly Patisserie
Manufacturer Product Code	02-14-001-1065
Product Type	Food
Product Category	Desserts
Storage Type	Frozen
Erudus ID	7e7df1e219684f799a270a7f20661a6c
Specification Type	Bakery Products
Inner Component GTIN	5056373301065
Outer Case GTIN	5056373301065



## INGREDIENTS

### Ingredient Declaration

Toffee Sponge (Wheat Flour (**WHEAT** Flour, Calcium Carbonate, Iron, Niacin, Thiamin), Sugar, **EGG**, Rapeseed Oil, Water, Modified Maize Starch, Whey Powder (**MILK**), Raising Agents (Diphosphates, Sodium Carbonates), Emulsifier Blend (Dried Glucose Syrup, Emulsifiers (Lactic Acid Esters of Mono & Di-glycerides of Fatty Acids, Mono & Di-glycerides of Fatty Acids, Propane-1,2-diol Esters of Fatty Acids), Skimmed **MILK** Powder, Stabiliser (Diphosphates)), Toffee Flavouring, Salt, Colour (Caramel)), Cream (**MILK**) (19%), Cranberry Compote (12%) (Cranberries, Cranberry Sauce (Sugar Syrup, Cranberries, Water, Gelling Agent (Pectin), Acidity Regulators (Citric Acid, Sodium Citrate, Calcium Citrate), Preservative (Potassium Sorbate)), Tinned Pears (Pears (5%), Water, Sugar, Acidity Regulator (Citric Acid)), White Chocolate (7%) (Sugar, Cocoa Butter, Whole **MILK** Powder, Emulsifier (**SOYA** Lecithin), Natural Vanilla Flavouring), Caramel Icing (6%) (Sugar, Glucose Syrup, Palm & Rapeseed Oil, Water, Caramelised Sugar Syrup, Emulsifiers (Mono & Di-glycerides of Fatty Acids, **SOYA** Lecithin), Salt, Stabiliser (Agar), Natural Flavouring, Preservative (Potassium Sorbate)), Sugar, White Chocolate Shavings (Sugar, Whole **MILK** Powder, Cocoa Butter, Emulsifier (**SOYA** Lecithin), Natural Vanilla Flavouring), Dried Cranberries (1%), Beef Gelatine, Dried Glucose Syrup, Dusting Sugar (Dextrose, Cornflour, Palm Oil), Mixed Spice, Modified Potato Starch, Dried **EGG** White, Dried **EGG** Yolk, Acidity Regulators (Diphosphates, Citric Acid), Stabilisers (Sodium Carboxy Methyl Cellulose), Guar Gum), Salt.



ALLERGENS

Product Contains:

<b>Celery/Celeriac</b>	No
<b>Cereals Containing Gluten</b>	Yes
<b>Barley</b>	May Contain
<b>Oats</b>	May Contain
<b>Rye</b>	No
<b>Wheat (including Spelt and Khorasan)</b>	Yes
<b>Crustacea</b>	No
<b>Eggs</b>	Yes
<b>Fish</b>	No
<b>Lupin</b>	No
<b>Milk</b>	Yes
<b>Molluscs</b>	No

<b>Mustard</b>	No
<b>Nuts (Tree)</b>	May Contain
<b>Almond nuts</b>	May Contain
<b>Brazil nuts</b>	No
<b>Cashew nuts</b>	No
<b>Hazelnuts</b>	May Contain
<b>Macadamia (Queensland) nuts</b>	No
<b>Pecan nuts</b>	May Contain
<b>Pistachio nuts</b>	May Contain
<b>Walnuts</b>	No
<b>Peanuts</b>	No
<b>Sesame Seeds</b>	No
<b>Soybeans</b>	Yes
<b>Sulphur Dioxide and Sulphites</b>	May Contain

Risk Source:

**Additional Allergen Information**

Produced in a manufacturing site which uses Nuts, Soya, Sulphites, Gluten (from Oats), Gluten (from Barley).

SUPPLEMENTARY  
INGREDIENT  
INFORMATION

<b>Palm Oil</b>	Yes
<b>Hydrogenated Vegetable Oil/Fat</b>	No
<b>GM Protein/DNA</b>	No

ADDITIVES

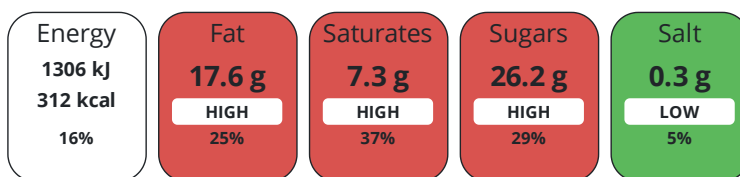
Product Contains:

<b>Artificial Antioxidants</b>	No	<b>Artificial Flavourings</b>	No
<b>Artificial Colours</b>	No	<b>Artificial Preservatives</b>	Yes
<b>Artificial Flavour Enhancers</b>	No	<b>Artificial Sweeteners</b>	No
<b>Vegan Diet</b>	No	<b>Vegetarian Diet</b>	No
<b>Halal Diet</b>	No	<b>Kosher Diet</b>	No

DIET  
SUITABILITY

NUTRITIONAL  
INFORMATION

Each 100g/ml portion contains:



of your reference intake.

Typical values per 100g/ml : Energy 312kcal / 1306kJ

Nutrient	per 100g	RI per 100g
Energy (kJ)	1306 kJ	16%
Energy (kcal)	312 kcal	16%
Fat	17.6 g	25%
of which Saturates	7.3 g	37%
of which Mono-unsaturates	6.9 g	
of which Polyunsaturates	2.5 g	
Carbohydrate	35.4 g	14%
of which Sugars	26.2 g	29%
of which Polyols	0 g	
of which Starch	9.2 g	
Fibre	0.8 g	
Protein	3 g	6%
Salt	0.3 g	5%
Sodium	100 mg	

#### VITAMINS AND MINERALS

Nutrient	per 100g	RI per 100g
Vitamin A	118 µg	15%
Vitamin C	1 mg	1%
Folate/Folic Acid	4 µg	2%
Calcium	21 mg	3%
Iron	0.2 mg	1%
Zinc	0.2 mg	2%

#### SUPPLEMENTARY NUTRITIONAL INFORMATION

Cholesterol per 100 g/ml (UK/FR)	0.04 g
Trans Fats per 100 g/ml	0.3 g

#### HFSS (HIGH IN FAT, SALT AND SUGAR) HANDLING & STORAGE INFORMATION

HFSS Status	Yes
-------------	-----

#### Directions For Use

To defrost, remove all packaging & refrigerate for 12 hours for the whole gateau or for 2-3 hours per portion. Once defrosted, keep refrigerated and use within 4 days. Do not re-freeze.

#### Storage Instructions

Store at -18°C.

Shelf Life from Time of Production	730 Days	Exempt From Shelf Life Labelling	No
------------------------------------	----------	----------------------------------	----

#### ACCREDITATIONS/ CERTIFICATIONS/ ASSURANCE SCHEMES



#### Other Accreditation

None

#### ORIGIN

**Product Country of Origin/Place of** United Kingdom

#### Provenance

#### Additional Origin Details

Ingredients sourced in UK and EU.

PRODUCT CHARACTERISTICS

Standards Testing

**Do you undertake trend analysis of microbiological results?** No

**Is shelf life testing undertaken?** No

Microbiological Standards

Organism	Description	Frequency	Target	Maximum	Sample (g or ml)
E. Coli (cfu/g or ml)		Occasionally	<10	100	10
Enterobacteriaceae (cfu/g or ml)		Occasionally	<10	10000	10
Listeria Monocytogenes (cfu/g or ml)	Absent in 25g	Occasionally	<0	0	25
Staphylococcus Aureus (cfu/g or ml)		Occasionally	<20	100	10
Total Viable Count (TVC) (cfu/g or ml)		Occasionally	<1000	1000000	10
Salmonella (cfu/g or ml)	Absent in 25g	Occasionally	<0	0	25

CONFIGURATION

Case Configuration

Inner Pack Configuration

<b>Total Quantity of Inner Components in Outer Case</b>	1 Units	<b>Count per Inner Component</b>	1
<b>Is the Outer Case Splittable?</b>	No		

PRODUCT WEIGHTS

Inner Component

<b>Variable Weight Consumer Item</b>	No
<b>Inner Component Weight</b>	1.6 kg

Outer Case

<b>Outer Case Gross Weight</b>	1.84 kg
<b>Outer Case Net Weight</b>	1.6 kg

PRODUCT DIMENSIONS

Inner Component

<b>Inner Component Depth</b>	250 mm
<b>Inner Component Width</b>	250 mm
<b>Inner Component Height</b>	60 mm

Outer Case

<b>Outer Case Depth</b>	300 mm
<b>Outer Case Width</b>	295 mm
<b>Outer Case Height</b>	90 mm

PALLET INFORMATION

<b>Quantity of Cases Per Pallet Layer</b>	12 Cases	<b>Pallet Height</b>	1.5 MTR
<b>Quantity of Layers Per Pallet</b>	15 Layers	<b>Pallet Gross Weight</b>	331.2 kg
<b>Quantity of Cases Per Pallet</b>	180 Cases		

PACKAGING

Inner Component Packaging

Type	Materials	Weight	Recycled Plastic %	Recyclable	Returnable	Composite
Box	Paper/Cardboard	70 g	- %			

Outer Case Packaging

Type	Materials	Weight	Recycled Plastic %	Recyclable	Returnable	Composite
Case	Paper/Cardboard	170 g	- %			

Transport Packaging

Type	Materials	Weight	Recycled Plastic %	Recyclable	Returnable	Composite
Other	Plastic	275 g	- %		Yes	
Other	Paper/Cardboard	500 g	- %		Yes	

OTHER INFORMATION

**Commodity Code** 1905907000

**Manufacturer Comments**

Minimum order quantities are for two layers of product . Providing that a total minimum of 144 cases to a maximum 180 cases are ordered the pallet can consist of mixed products.

CONTACT INFORMATION

Address

Chantilly Patisserie  
 Aspen Way Yalberton Industrial Estate  
 Aspen Way  
 Paignton  
 Paignton  
 TQ4 7QR  
 England

P: (Phone) 01803 663434

Complaints Contact

Claire Dawson  
 Technical Director  
 cdawson@chantillypatisserie.co.uk

P: (Phone) +441803663434

Technical Contact

Claire Dawson  
 Technical Director  
 cdawson@chantillypatisserie.co.uk

P: (Phone) +441803663434

Commercial Contact

Andrew Hart  
 Business Development Manager  
 ahart@chantillypatisserie.co.uk

P: (Phone) +441803663434

The information on the [Erudus System](#) has been supplied by the manufacturers of the products and, whilst the owners of the Erudus System take steps to ensure the information is regularly updated, they give no warranty and no guarantee that the information is accurate. Product information and ingredients may change, please always read product labels carefully in addition to using the information provided by Erudus.

We do not accept liability for any inaccuracies or incorrect information contained on this site.  
 Please visit <http://www.erudus.com/terms-and-conditions> for full terms and conditions.