

Changed Aug 25, 2021 13:49

Erudus ID 1ab2352d7ecb4c82b7f395ff038b4cc6

Version 1.0

08843

DaVinci Raspberry Puree

Davinci Raspberry Puree

PRODUCT DESCRIPTION

Sweetened Raspberry Puree

Brand	Kerry Ingredients UK Limited
Manufacturer Product Code	20494741
Product Type	Food
Product Category	Desserts
Storage Type	Ambient
Erudus ID	1ab2352d7ecb4c82b7f395ff038b4cc6
Specification Type	Legacy
Inner Component GTIN	5057624169946
Outer Case GTIN	5057624033469



INGREDIENTS

Ingredient Declaration

Raspberry Puree (90%), Sugar (10%)

ALLERGENS

Product Contains:

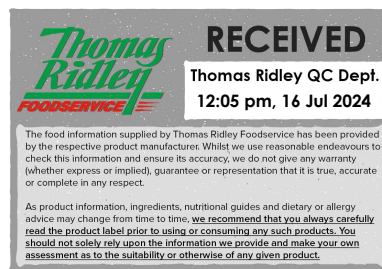
Celery/Celeriac	No	Mustard	No
Cereals Containing Gluten	No	Nuts (Tree)	No
Barley	No	Almond nuts	No
Oats	No	Brazil nuts	No
Rye	No	Cashew nuts	No
Wheat (including Spelt and Khorasan)	No	Hazelnuts	No
Gluten content <20ppm	Yes	Macadamia (Queensland) nuts	No
Crustacea	No	Pecan nuts	No
Eggs	No	Pistachio nuts	No
Fish	No	Walnuts	No
Lupin	No	Peanuts	No
Milk	No	Sesame Seeds	No
Molluscs	No	Soybeans	No
		Sulphur Dioxide and Sulphites	No

Additional Allergen Information

N/A

SUPPLEMENTARY INGREDIENT INFORMATION

Palm Oil	No
Hydrogenated Vegetable Oil/Fat	No
GM Protein/DNA	No



ADDITIVES

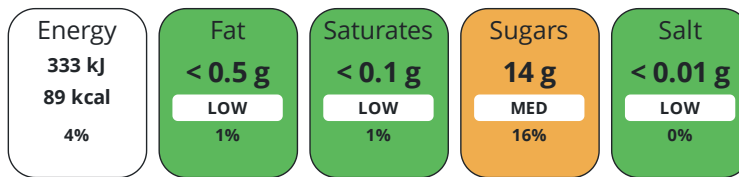
Product Contains:

Artificial Antioxidants	No	Artificial Flavourings	No
Artificial Colours	No	Artificial Preservatives	No
Artificial Flavour Enhancers	No	Artificial Sweeteners	No
Suitable for Coeliacs	Yes	Halal Diet	No
Kosher Diet	No	Vegetarian Diet	Suitable for
Vegan Diet	Suitable for		

DIET SUITABILITY

NUTRITIONAL INFORMATION

Each 100g/ml portion contains:



of your reference intake.

Typical values per 100g/ml : Energy 89kcal / 333kj

Nutrient	per 100g/ml	RI per 100g/ml	per 30g/ml serving	RI per 30g/ml serving
Energy (kJ)	333 kJ	4%	99.9 kJ	1%
Energy (kcal)	89 kcal	4%	26.7 kcal	1%
Fat	< 0.5 g	1%	0.2 g	0%
of which Saturates	< 0.1 g	1%	-	
Carbohydrate	15 g	6%	4.5 g	2%
of which Sugars	14 g	16%	4.2 g	5%
Protein	1.3 g	3%	0.4 g	1%
Salt	< 0.01 g	0%	-	
Serving Size	30 g			

SUPPLEMENTARY NUTRITIONAL INFORMATION

HANDLING & STORAGE INFORMATION

Directions For Use

Mix 30ml of DaVinci puree, 50ml spirit, 20ml if citrus and ice. Shake hard and serve up, on the rocks or long with soda

Storage Instructions

Store in a cool, dry place between 10°C and 25°C

Shelf Life from Time of Production 365 Days

ACCREDITATIONS/ CERTIFICATIONS/ ASSURANCE SCHEMES ORIGIN

BRCGS Certified

Product Country of Origin/Place of Provenance France

Additional Origin Details

N/A

PRODUCT CHARACTERISTICS

Standards Testing

Do you undertake trend analysis of microbiological results? Yes

Is shelf life testing undertaken? Yes

Microbiological Standards

Organism	Description	Frequency	Target	Maximum	Sample (g or ml)
Coliforms (cfu/g or ml)		Every Batch	<10	10	-
Total Viable Count (TVC) (cfu/g or ml)		Every Batch	<1000	1000	-

Analytical Standards

Test	Description	Frequency	Target	Range	Sample (g or ml)
Brix (°Bx)		Every Batch	<22.5	17.5 to 22.5	-
pH		Every Batch	<3.3	2.7 to 3.3	-

CONFIGURATION

Case Configuration Inner Pack Configuration

Total Quantity of Inner Components in 4 Units

Outer Case

PRODUCT WEIGHTS

Inner Component

Variable Weight Consumer Item No

Weight/Volume

1.070

Outer Case

Outer Case Gross Weight 1 kg

Outer Case Net Weight 1.04 kg

PRODUCT DIMENSIONS

Inner Component

Inner Component Depth 70 mm

Inner Component Width 71 mm

Inner Component Height 251 mm

Outer Case

Outer Case Depth 155 mm

Outer Case Width 297 mm

Outer Case Height 217 mm

PALLET INFORMATION

Quantity of Cases Per Pallet Layer 35 Cases

Pallet Height 1.3 MTR

Quantity of Layers Per Pallet 6 Layers

Pallet Gross Weight 840 kg

Quantity of Cases Per Pallet 210 Cases

PACKAGING

Inner Component Packaging

Type	Materials	Weight	Recycled Plastic %	Recyclable	Returnable	Composite
Carton	Paper/Cardboard	32.7 g	- %			

Transport Packaging

Type	Materials	Weight	Recycled Plastic %	Recyclable	Returnable	Composite
Other	Paper/Cardboard	32.5 g	- %			

OTHER INFORMATION

Commodity Code 2009311999

CONTACT
INFORMATION

Address

Kerry Ingredients UK Limited
Global Technology & Innovation Centre
Millennium Park
Naas
Co.Kildare
W91 W923
Ireland

P: (Phone) +00 353 45 931 000

Complaints Contact

Customer Service Europe
Customer Service Europe
customerserviceeurope@kerry.com

P: (Phone) +00 353 45 931 000

Technical Contact

Bernard James
Sales Support
bernard.james@kerry.com

Commercial Contact

Daren Baalham
Channel Controller
daren.baalham@kerry.com

The information on the [Erudus System](#) has been supplied by the manufacturers of the products and, whilst the owners of the Erudus System take steps to ensure the information is regularly updated, they give no warranty and no guarantee that the information is accurate. Product information and ingredients may change, please always read product labels carefully in addition to using the information provided by Erudus.

We do not accept liability for any inaccuracies or incorrect information contained on this site.
Please visit <http://www.erudus.com/terms-and-conditions> for full terms and conditions.