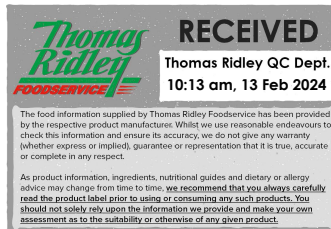


Changed Feb 12, 2024 16:16

Reviewed Feb 12, 2024 16:16

Erudus ID ff710f373d09482a9a81433428698243

Version 2.0



FIREFLY™ 330ml Lemon, Lime & Ginger (Glass)

Still Lemon, Lime And Ginger Flavoured White Grape Based Juice Drink With Botanical Extracts 12x

PRODUCT DESCRIPTION

Still lemon, lime and ginger flavoured white grape based juice drink with botanical extracts

Brand	Purity Soft Drinks Ltd
Manufacturer Product Code	FFLYLEMLIM330ML
Product Type	Drink
Product Category	Juices and Cordials
Storage Type	Ambient
Erudus ID	ff710f373d09482a9a81433428698243
Specification Type	Drinks
Inner Component GTIN	5060066440504
Outer Case GTIN	05060066449057



INGREDIENTS

Ingredient Declaration

Still Water, Fruit Juices from Concentrate: White Grape (45.2%), Lemon (3.4%), Lime (3%), Botanical Extracts (0.03%): Nettle and Dandelion, Natural Ginger Flavouring, Natural Rosemary Flavouring and Other Natural Flavourings.

ALLERGENS

Product Contains:

Celery/Celeriac	No	Mustard	No
Cereals Containing Gluten	No	Nuts (Tree)	No
Barley	No	Almond nuts	No
Oats	No	Brazil nuts	No
Rye	No	Cashew nuts	No
Wheat (including Spelt and Khorasan)	No	Hazelnuts	No
Crustacea	No	Macadamia (Queensland) nuts	No
Eggs	No	Pecan nuts	No
Fish	No	Pistachio nuts	No
Lupin	No	Walnuts	No
Milk	No	Peanuts	No
Molluscs	No	Sesame Seeds	No
		Soybeans	No
		Sulphur Dioxide and Sulphites	No

SUPPLEMENTARY INGREDIENT INFORMATION

Palm Oil	No
Hydrogenated Vegetable Oil/Fat	No
GM Protein/DNA	No

ADDITIVES

Product Contains:

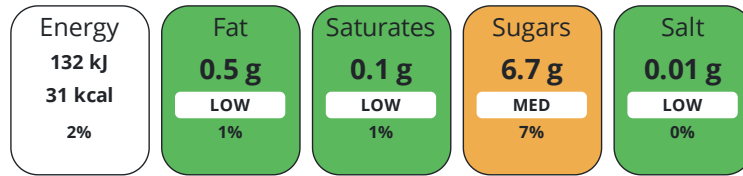
Artificial Antioxidants	No	Artificial Flavourings	No
Artificial Colours	No	Artificial Preservatives	No
Artificial Flavour Enhancers	No	Artificial Sweeteners	No

DIET
SUITABILITY

Vegan Diet	Suitable for	Vegetarian Diet	Suitable for
Halal Diet	No	Kosher Diet	No

NUTRITIONAL
INFORMATION

Each 100g/ml portion contains:



of your reference intake.

Typical values per 100g/ml : Energy 31kcal / 132kJ

Nutrient	per 100ml	RI per 100ml
Energy (kJ)	132 kJ	2%
Energy (kcal)	31.1 kcal	2%
Fat	< 0.5 g	1%
of which Saturates	< 0.1 g	1%
Carbohydrate	7.2 g	3%
of which Sugars	6.7 g	7%
Fibre	< 0.5 g	
Protein	< 0.5 g	1%
Salt	< 0.01 g	0%

SUPPLEMENTARY
NUTRITIONAL
INFORMATION

HANDLING &
STORAGE
INFORMATION

Directions For Use

Oral consumption

Storage Instructions

Store in cool dry conditions away from strong light sources. Best served chilled and shake well before use. Once opened keep in the fridge and consume within 24 hours.

Shelf Life from Time of Production	630 Days	Exempt From Shelf Life Labelling	No
---	----------	---	----

ACCREDITATIONS/
CERTIFICATIONS/
ASSURANCE
SCHEMES



ORIGIN

Product Country of Origin/Place of Not Specified

Provenance

Additional Origin Details

Bottled in UK. Compulsory or voluntary country of original labelling not present.

Standards Testing

PRODUCT
CHARACTERISTICS

Do you undertake trend analysis of microbiological results?	Yes	Is shelf life testing undertaken?	Yes
--	-----	--	-----

Microbiological Standards

Organism	Description	Frequency	Target	Maximum	Sample (g or ml)
Total Viable Count (TVC) (cfu/g or ml)		Every Batch	=0	0	5

Organism	Description	Frequency	Target	Maximum	Sample (g or ml)
Yeast (cfu/g or ml)		Every Batch	=0	0	5
Moulds (cfu/g or ml)		Every Batch	=0	0	5

Analytical Standards

Test	Description	Frequency	Target	Range	Sample (g or ml)
Acidity (%)		Every Batch	=0.41	0.36 to 0.46	10
Brix °Bx		Every Batch	=7.9	7.7 to 8.1	1

CONFIGURATION

Case Configuration Inner Pack Configuration

Total Quantity of Inner Components in 12 Units

Outer Case

Is the Outer Case Splittable? Yes

PRODUCT WEIGHTS

Inner Component

Outer Case

Outer Case Gross Weight 7 kg

Outer Case Net Weight 4.53 kg

PRODUCT DIMENSIONS

Inner Component

Inner Component Depth 159 mm

Inner Component Width 66 mm

Inner Component Height 66 mm

Outer Case

Outer Case Depth 280 mm

Outer Case Width 205 mm

Outer Case Height 160 mm

PALLET INFORMATION

Quantity of Cases Per Pallet Layer 19 Cases

Pallet Height 1.3 MTR

Quantity of Layers Per Pallet 7 Layers

Pallet Gross Weight 964 kg

Quantity of Cases Per Pallet 133 Cases

PACKAGING

Inner Component Packaging

Type	Materials	Weight	Recycled Plastic %	Recyclable	Returnable	Composite
Bottle	Glass	200 g	- %			
Bottle	Steel	4 g	- %			

Outer Case Packaging

Type	Materials	Weight	Recycled Plastic %	Recyclable	Returnable	Composite
Case	Plastic	23.1 g	- %			
Case	Paper/Cardboard	42 g	- %			

Transport Packaging

Type	Materials	Weight	Recycled Plastic %	Recyclable	Returnable	Composite
Other	Plastic	1000 g	- %			
Other	Paper/Cardboard	1000 g	- %			
Other	Wood	20000 g	- %			

OTHER INFORMATION

CONTACT
INFORMATION

Address

Purity Soft Drinks Ltd
Douglas House
Mounts Road
Wednesbury
West Midlands
WS10 0BU
England

P. (Phone) 01215057585

The information on the [Erudus System](#) has been supplied by the manufacturers of the products and, whilst the owners of the Erudus System take steps to ensure the information is regularly updated, they give no warranty and no guarantee that the information is accurate. Product information and ingredients may change, please always read product labels carefully in addition to using the information provided by Erudus.

We do not accept liability for any inaccuracies or incorrect information contained on this site.
Please visit <http://www.erudus.com/terms-and-conditions> for full terms and conditions.