

Changed Mar 14, 2024 11:01

Reviewed Mar 14, 2024 11:01

Erudus ID fad6e637e75e41f0b62fc939dae5c9f2

Version 2.0

08941

Nutless Roast Slice

Nutless Roast Slice 16x12g

PRODUCT DESCRIPTION

An individual slice of vegetable roast, with Pumpkin, Sunflower Seeds and mushrooms delicately flavoured with herbs.

Brand	What's Cooking Deeside UK Ltd
Manufacturer Product Code	GR459
Product Type	Food
Product Category	Ready Meals
Storage Type	Frozen
Erudus ID	fad6e637e75e41f0b62fc939dae5c9f2
Specification Type	Generic



Outer Case GTIN 5016236030587



INGREDIENTS

Ingredient Declaration

Brown Rice, Onion, Mushroom (11%), Margarine (Vegetable Oils (Palm Oil, Rapeseed Oil) Water, Salt), White Breadcrumbs (**WHEAT** Flour (with added Calcium Carbonate, Iron, Niacin, Thiamin), Salt, Yeast), **EGG**, Sunflower Seeds (5%), Pumpkin Seeds (4%), Yeast Extract (Yeast Extract, Salt), Rapeseed Oil, Stabiliser (Hydroxypropyl Methyl Cellulose, Guar Gum), Salt, Parsley, Black Pepper, Sage.

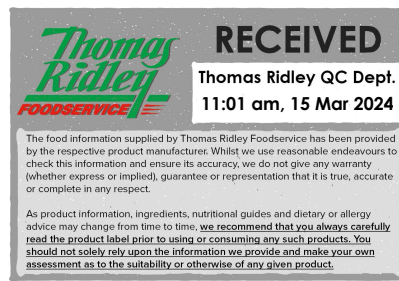
ALLERGENS

Product Contains:

Celery/Celeriac	No	Mustard	No
Cereals Containing Gluten	Yes	Nuts (Tree)	No
Barley	No	Almond nuts	No
Oats	No	Brazil nuts	No
Rye	No	Cashew nuts	No
Wheat (including Spelt and Khorasan)	Yes	Hazelnuts	No
Crustacea	No	Macadamia (Queensland) nuts	No
Eggs	Yes	Pecan nuts	No
Fish	No	Pistachio nuts	No
Lupin	No	Walnuts	No
Milk	No	Peanuts	No
Molluscs	No	Sesame Seeds	No
		Soybeans	No
		Sulphur Dioxide and Sulphites	No

Additional Allergen Information

Allergy Advice:- For allergens & cereals containing gluten, see ingredients in bold. This product contains This product contains: Wheat (Gluten), Egg



SUPPLEMENTARY
INGREDIENT
INFORMATION

Palm Oil	Yes
Hydrogenated Vegetable Oil/Fat	No
GM Protein/DNA	No

ADDITIVES

Product Contains:

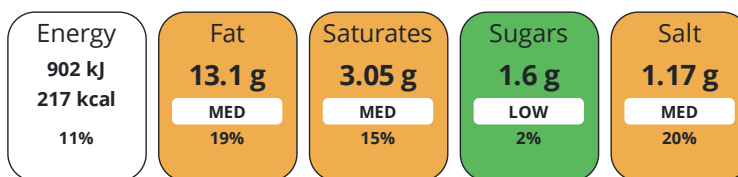
Artificial Antioxidants	No	Artificial Flavourings	No
Artificial Colours	No	Artificial Preservatives	No
Artificial Flavour Enhancers	No	Artificial Sweeteners	No

DIET
SUITABILITY

Vegan Diet	No	Vegetarian Diet	Suitable for
Halal Diet	No	Kosher Diet	No

NUTRITIONAL
INFORMATION

Each 100g/ml portion contains:



of your reference intake.

Typical values per 100g/ml : Energy 217kcal / 902kj

Nutrient	per 100g	RI per 100g	per 140g serving	RI per 140g serving
Energy (kJ)	902 kJ	11%	1262.8 kJ	15%
Energy (kcal)	217 kcal	11%	303.8 kcal	15%
Fat	13.1 g	19%	18.3 g	26%
of which Saturates	3.05 g	15%	4.3 g	22%
of which Mono-unsaturates	5.01 g		7 g	
of which Polyunsaturates	2.01 g		2.8 g	
Carbohydrate	18.53 g	7%	25.9 g	10%
of which Sugars	1.6 g	2%	2.2 g	2%
of which Starch	6.81 g		9.5 g	
Fibre	1.66 g		2.3 g	
Protein	6.5 g	13%	9.1 g	18%
Salt	1.17 g	20%	1.6 g	27%
Sodium	461 mg		645.4 mg	

Serving Size	140 g
---------------------	-------

SUPPLEMENTARY
NUTRITIONAL
INFORMATION

Trans Fats per 100 g/ml	0 g
--------------------------------	-----

HANDLING &
STORAGE
INFORMATION

Directions For Use

From Frozen - preheat oven, place on baking tray and cook at 180°C for approx. 12 - 14mins. Ensure product is piping hot before serving.

Storage Instructions

Keep frozen at less than -18°C

Shelf Life from Time of Production	547 Days	Exempt From Shelf Life Labelling	No
---	----------	---	----

Other Accreditation

N/A

ORIGIN

Product Country of Origin/Place of United Kingdom

Provenance

Additional Origin Details

UK

PRODUCT
CHARACTERISTICS

Standards Testing

Do you undertake trend analysis of microbiological results? No

Is shelf life testing undertaken? No

Microbiological Standards

Organism	Description	Frequency	Target	Maximum	Sample (g or ml)
Bacillus Cereus (cfu/g or ml)		Annually	<1000	100000	140
E. Coli (cfu/g or ml)		Annually	<20	100	140
Enterobacteriaceae (cfu/g or ml)		Annually	<100	100000	140
Listeria Monocytogenes (cfu/g or ml)		Annually	<0	100	140
Staphylococcus Aureus (cfu/g or ml)		Annually	<20	100	140
Total Viable Count (TVC) (cfu/g or ml)		Annually	<1000000	10000000	140
Salmonella (cfu/g or ml)		Annually	<0	0	140

CONFIGURATION

Case Configuration

Inner Pack Configuration

Total Quantity of Inner Components in 16 Units

Outer Case

PRODUCT
WEIGHTS

Inner Component

Variable Weight Consumer Item No

Inner Component Weight 12 g

Net Drained Weight 0 g

Outer Case

Outer Case Gross Weight 2.37 kg

Outer Case Net Weight 2.24 kg

PRODUCT
DIMENSIONS

Inner Component

Inner Component Depth 501 mm

Inner Component Width 0 mm

Inner Component Height 381 mm

Outer Case

Outer Case Depth 288 mm

Outer Case Width 220 mm

Outer Case Height 80 mm

PALLET INFORMATION

Quantity of Cases Per Pallet Layer	15 Cases	Pallet Height	1.28 MTR
Quantity of Layers Per Pallet	14 Layers	Pallet Gross Weight	526.33 kg
Quantity of Cases Per Pallet	210 Cases		

PACKAGING

Inner Component Packaging

Type	Materials	Weight	Recycled Plastic %	Recyclable	Returnable	Composite
Bag	Plastic	12 g	- %			

Outer Case Packaging

Type	Materials	Weight	Recycled Plastic %	Recyclable	Returnable	Composite
Case	Plastic	12 g	- %			
Case	Paper/Cardboard	121 g	- %			

Transport Packaging

Type	Materials	Weight	Recycled Plastic %	Recyclable	Returnable	Composite
Other	Plastic	114 g	- %			

OTHER INFORMATION

Commodity Code	2004909810	Identification/Health Marks	GB DZ 024
-----------------------	------------	------------------------------------	-----------

Manufacturer Comments

None

CONTACT INFORMATION

Address

What's Cooking Deeside UK Ltd
 Estuary House
 Tenth Avenue, Zone 3
 Deeside Industrial Park
 Flintshire
 CH5 2UA
 United Kingdom

P: (Phone) 01244 286200

Complaints Contact

Amy Probert
 Specifications Technologist
 Amy.Probert@whatscooking.group

P: (Phone) 01244 286200

Technical Contact

Sion Williams
 Technical Manager
 Sion.Williams@whatscooking.group

P: (Phone) 01244286200

Commercial Contact

Alex Bell
 Sales Administrator
 Alex.bell@whatscooking.group

P: (Phone) 01244 286217

The information on the [Erudus System](#) has been supplied by the manufacturers of the products and, whilst the owners of the Erudus System take steps to ensure the information is regularly updated, they give no warranty and no guarantee that the information is accurate. Product information and ingredients may change, please always read product labels carefully in addition to using the information provided by Erudus.

We do not accept liability for any inaccuracies or incorrect information contained on this site.
 Please visit <http://www.erudus.com/terms-and-conditions> for full terms and conditions.