

Changed Mar 14, 2024 10:43

Reviewed Mar 14, 2024 10:43

Erudus ID 97a6f960029c42e9a181bc778706bb54

Version 2.0

08942

# Mushroom Brie & Cranberry Wellington

Mushroom Brie & Cranberry Wellington 12x12g

## PRODUCT DESCRIPTION

Sautéed Mushrooms, cranberries & seasoned spinach with Pumpkin seeds& Sunflower Seeds, topped with a brie cheese sauce encased in puff pastry.

Brand	What's Cooking Deeside UK Ltd
Manufacturer Product Code	PA626
Product Type	Food
Product Category	Ready Meals
Storage Type	Frozen
Erudus ID	97a6f960029c42e9a181bc778706bb54
Specification Type	Generic



RECEIVED

Thomas Ridley QC Dept.  
10:58 am, 15 Mar 2024

The food information supplied by Thomas Ridley Foodservice has been provided by the respective product manufacturer. Whilst we use reasonable endeavours to check this information and ensure its accuracy, we do not give any warranty (whether express or implied), guarantee or representation that it is true, accurate or complete in any respect.

As product information, ingredients, nutritional guides and dietary or allergy advice may change from time to time, we recommend that you always carefully read the product label prior to using or consuming any such products. You should not solely rely upon the information we provide and make your own assessment as to the suitability or otherwise of any given product.



Outer Case GTIN 5016236030600



## INGREDIENTS

### Ingredient Declaration

Vegetable and Mushroom Mix (55%) (Mushroom (35%), Onion, Spinach, Breadcrumbs (**WHEAT** Flour (Calcium Carbonate, Iron, Niacin, Thiamin), Water, Salt, Yeast), Butter (**MILK**), Sweetened Dried Cranberries (3%) (Sugar, Cranberries, Sunflower Oil), Pumpkin Seeds, Pasteurised Whole **EGG**, Rapeseed Oil, Porcini Mushrooms, Salt, Garlic Puree, Thyme, Vegetable Bouillon (Salt, Maltodextrin, Potato Starch, Yeast Extract, Sugar, Vegetables (Onion, Parsnip, Parsley), Sunflower Oil, Spices (Turmeric, Lovage, Pepper, Garlic, Mace, Nutmeg), Lovage Extract), Black Pepper, Nutmeg), Pastry (35%) (Puff Pastry Rounds (**WHEAT** Flour (**WHEAT** Flour, Calcium Carbonate, Iron, Niacin, Thiamin), Margarine (Palm and Rapeseed Oil, Water, Salt) Water, Preservative (Potassium Sorbate)), Pasteurised Whole **EGG**), Brie Sauce (10%) (Water, Single Cream (**MILK**), Brie Cheese (**MILK**) (11%), Fortified **WHEAT** Flour (**WHEAT** Flour, Iron, Thiamin, Nicotinic Acid, Calcium Carbonate), Full Fat Soft Cheese (**MILK**), Modified Maize Starch, Salt, Black Pepper).

## ALLERGENS

Product Contains:

<b>Celery/Celeriac</b>	No	<b>Mustard</b>	No
<b>Cereals Containing Gluten</b>	Yes	<b>Nuts (Tree)</b>	No
<b>Barley</b>	No	<b>Almond nuts</b>	No
<b>Oats</b>	No	<b>Brazil nuts</b>	No
<b>Rye</b>	No	<b>Cashew nuts</b>	No
<b>Wheat (including Spelt and Khorasan)</b>	Yes	<b>Hazelnuts</b>	No
<b>Crustacea</b>	No	<b>Macadamia (Queensland) nuts</b>	No
<b>Eggs</b>	Yes	<b>Pecan nuts</b>	No
<b>Fish</b>	No	<b>Pistachio nuts</b>	No
<b>Lupin</b>	No	<b>Walnuts</b>	No
<b>Milk</b>	Yes	<b>Peanuts</b>	No
<b>Molluscs</b>	No	<b>Sesame Seeds</b>	No
		<b>Soybeans</b>	No
		<b>Sulphur Dioxide and Sulphites</b>	No

### Additional Allergen Information

Allergy Advice:- For allergens & cereals containing gluten, see ingredients in bold. This product contains: Wheat (Gluten), Egg, Milk.

#### SUPPLEMENTARY INGREDIENT INFORMATION

<b>Palm Oil</b>	Yes
<b>Hydrogenated Vegetable Oil/Fat</b>	No
<b>GM Protein/DNA</b>	No

#### ADDITIVES

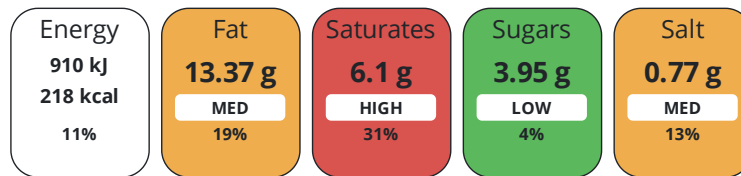
*Product Contains:*

<b>Artificial Antioxidants</b>	No	<b>Artificial Flavourings</b>	No
<b>Artificial Colours</b>	No	<b>Artificial Preservatives</b>	Yes
<b>Artificial Flavour Enhancers</b>	No	<b>Artificial Sweeteners</b>	No
<b>Vegan Diet</b>	No	<b>Vegetarian Diet</b>	Suitable for
<b>Halal Diet</b>	No	<b>Kosher Diet</b>	No

#### DIET SUITABILITY

#### NUTRITIONAL INFORMATION

Each 100g/ml portion contains:



of your reference intake.

Typical values per 100g/ml : Energy 218kcal / 910kJ

Nutrient	per 100g	RI per 100g	per 195g serving	RI per 195g serving
<b>Energy (kJ)</b>	910 kJ	11%	1774.5 kJ	21%
<b>Energy (kcal)</b>	218 kcal	11%	425.1 kcal	21%
<b>Fat</b>	13.37 g	19%	26.1 g	37%
<b>of which Saturates</b>	6.1 g	31%	11.9 g	60%
<b>of which Mono-unsaturates</b>	4.23 g		8.2 g	
<b>of which Polyunsaturates</b>	1.41 g		2.7 g	
<b>Carbohydrate</b>	18.95 g	7%	37 g	14%
<b>of which Sugars</b>	3.95 g	4%	7.7 g	9%
<b>of which Starch</b>	13.31 g		26 g	
<b>Fibre</b>	1.86 g		3.6 g	
<b>Protein</b>	5.42 g	11%	10.6 g	21%
<b>Salt</b>	0.77 g	13%	1.5 g	25%
<b>Sodium</b>	303 mg		590.9 mg	

<b>Serving Size</b>	195 g
---------------------	-------

#### SUPPLEMENTARY NUTRITIONAL INFORMATION

<b>Trans Fats per 100 g/ml</b>	0.11 g
--------------------------------	--------

HANDLING &  
STORAGE  
INFORMATION

**Directions For Use**

Cook From Frozen - pre-heat oven to 200 - 225C, place product on metal tray and cook for approximately 18 - 22 mins. Always ensure product is piping hot before serving.

**Storage Instructions**

Keep frozen at less than -18°C

<b>Shelf Life from Time of Production</b>	547 Days	<b>Exempt From Shelf Life Labelling</b>	No
---	----------	---	----

ACCREDITATIONS/  
CERTIFICATIONS/  
ASSURANCE  
SCHEMES



**Other Accreditation**

N/A

ORIGIN

**Product Country of Origin/Place of** United Kingdom

**Provenance**

**Additional Origin Details**

UK

PRODUCT  
CHARACTERISTICS

Standards Testing

<b>Do you undertake trend analysis of microbiological results?</b>	No	<b>Is shelf life testing undertaken?</b>	No
--	----	--	----

Microbiological Standards

Organism	Description	Frequency	Target	Maximum	Sample (g or ml)
E. Coli (cfu/g or ml)		Annually	<20	100	195
Enterobacteriaceae (cfu/g or ml)		Occasionally	<100	100000	195
Listeria Monocytogenes (cfu/g or ml)		Annually	<0	100	195
Staphylococcus Aureus (cfu/g or ml)		Annually	<20	100	195
Total Viable Count (TVC) (cfu/g or ml)		Annually	<1000000	10000000	195
Salmonella (cfu/g or ml)		Annually	<0	0	195

CONFIGURATION

Case Configuration

Inner Pack Configuration

**Total Quantity of Inner Components in** 12 Units

**Outer Case**

PRODUCT  
WEIGHTS

Inner Component

**Variable Weight Consumer Item** No

**Inner Component Weight** 12 g

**Net Drained Weight** 0 g

Outer Case

**Outer Case Gross Weight** 2.58 kg

**Outer Case Net Weight** 2.34 kg

PRODUCT DIMENSIONS

Inner Component	
<b>Inner Component Depth</b>	501 mm
<b>Inner Component Width</b>	0 mm
<b>Inner Component Height</b>	301 mm
Outer Case	
<b>Outer Case Depth</b>	249 mm
<b>Outer Case Width</b>	249 mm
<b>Outer Case Height</b>	117 mm

PALLET INFORMATION

<b>Quantity of Cases Per Pallet Layer</b>	16 Cases	<b>Pallet Height</b>	1.56 MTR
<b>Quantity of Layers Per Pallet</b>	12 Layers	<b>Pallet Gross Weight</b>	522.59 kg
<b>Quantity of Cases Per Pallet</b>	192 Cases		

PACKAGING

Inner Component Packaging						
Type	Materials	Weight	Recycled Plastic %	Recyclable	Returnable	Composite
Bag	Plastic	12 g	- %			
Outer Case Packaging						
Type	Materials	Weight	Recycled Plastic %	Recyclable	Returnable	Composite
Case	Plastic	12 g	- %			
Case	Paper/Cardboard	210 g	- %			
Transport Packaging						
Type	Materials	Weight	Recycled Plastic %	Recyclable	Returnable	Composite
Other	Plastic	114 g	- %			

OTHER INFORMATION

<b>Commodity Code</b>	2104100019	<b>Identification/Health Marks</b>	GB DZ 024
-----------------------	------------	------------------------------------	-----------

**Manufacturer Comments**

None

CONTACT INFORMATION

Address	Technical Contact
What's Cooking Deeside UK Ltd	Sion Williams
Estuary House	Technical Manager
Tenth Avenue, Zone 3	Sion.Williams@whatscooking.group
Deeside Industrial Park	
Flintshire	<a href="tel:01244286200">P: (Phone) 01244286200</a>
CH5 2UA	
United Kingdom	
<a href="tel:01244286200">P: (Phone) 01244 286200</a>	
Complaints Contact	Commercial Contact
Amy Probert	Alex Bell
Specifications Technologist	Sales Administrator
Amy.Probert@whatscooking.group	Alex.bell@whatscooking.group
<a href="tel:01244286200">P: (Phone) 01244 286200</a>	<a href="tel:01244286217">P: (Phone) 01244 286217</a>

The information on the [Erudus System](#) has been supplied by the manufacturers of the products and, whilst the owners of the Erudus System take steps to ensure the information is regularly updated, they give no warranty and no guarantee that the information is accurate. Product information and ingredients may change, please always read product labels carefully in addition to using the information provided by Erudus.

We do not accept liability for any inaccuracies or incorrect information contained on this site.  
Please visit <http://www.erudus.com/terms-and-conditions> for full terms and conditions.