

Changed Sep 09, 2024 13:14

Reviewed Sep 09, 2024 13:14

Erudus ID 345c54612e39494bad9384511375d9e4

Version 2.0

Thomas Ridley QC Dept.
3:29 pm, 11 Sep 2024

The food information supplied by Thomas Ridley Foodservice has been provided by the respective product manufacturers. Whilst we use reasonable endeavours to check this information and ensure its accuracy, we do not give any warranty (whether express or implied), guarantee or representation that it is true, accurate or complete in any respect.

As product information, ingredients, nutritional guides and dietary or allergy advice may change from time to time, we recommend that you always carefully read the product label prior to using or consuming any such products. You should not solely rely upon the information we provide and make your own assessment as to the suitability or otherwise of any given product.



08989

Cornflour 4 x 3.5kg

Cornflour

PRODUCT DESCRIPTION

native maize starch

Brand	Richard Whittaker Ltd
Manufacturer Product Code	JB001C014
Product Type	Food
Product Category	Flour
Storage Type	Ambient
Erudus ID	345c54612e39494bad9384511375d9e4
Specification Type	Generic
Inner Component GTIN	5033897100275
Outer Case GTIN	5033897100282



INGREDIENTS

Ingredient Declaration

cornflour

ALLERGENS

Product Contains:

Celery/Celeriac	No	Mustard	No
Cereals Containing Gluten	No	Nuts (Tree)	No
Barley	No	Almond nuts	No
Oats	No	Brazil nuts	No
Rye	No	Cashew nuts	No
Wheat (including Spelt and Khorasan)	No	Hazelnuts	No
Crustacea	No	Macadamia (Queensland) nuts	No
Eggs	No	Pecan nuts	No
Fish	No	Pistachio nuts	No
Lupin	No	Walnuts	No
Milk	No	Peanuts	No
Molluscs	No	Sesame Seeds	No
		Soybeans	No
		Sulphur Dioxide and Sulphites	No

SUPPLEMENTARY INGREDIENT INFORMATION

Palm Oil	No
Hydrogenated Vegetable Oil/Fat	No
GM Protein/DNA	No

ADDITIVES

Product Contains:

Artificial Antioxidants	No	Artificial Flavourings	No
Artificial Colours	No	Artificial Preservatives	No
Artificial Flavour Enhancers	No	Artificial Sweeteners	No

DIET
SUITABILITY

Vegan Diet

Suitable for

Vegetarian Diet

Suitable for

Halal Diet

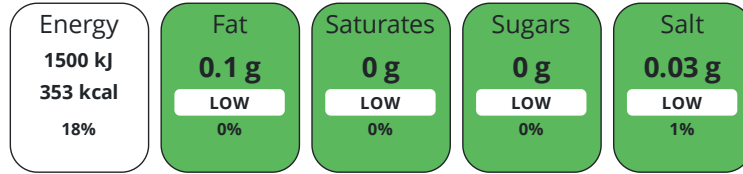
Suitable for

Kosher Diet

Suitable for

NUTRITIONAL
INFORMATION

Each 100g/ml portion contains:



of your reference intake.

Typical values per 100g/ml : Energy 353kcal / 1500kJ

Nutrient	per 100g	RI per 100g
Energy (kJ)	1500 kJ	18%
Energy (kcal)	353 kcal	18%
Fat	0.1 g	0%
of which Saturates	0 g	0%
Carbohydrate	88 g	34%
of which Sugars	0 g	0%
Fibre	0 g	
Protein	0.3 g	1%
Salt	0.03 g	1%
Sodium	10 mg	

Source of Nutritional Information Manufacturers analysis

SUPPLEMENTARY
NUTRITIONAL
INFORMATION

HANDLING &
STORAGE
INFORMATION

Directions For Use

use as required, make a slurry with cold liquid before adding to hot dishes or it will clump

Storage Instructions

Ambient Conditions. Store cool & dry in well sealed packages, or transfer to airtight container once opened.

Storage Instructions After Opening

Reseal securely or transfer to an air tight container once opened.

Shelf Life from Time of Production 730 Days

ACCREDITATIONS/
CERTIFICATIONS/
ASSURANCE
SCHEMES
ORIGIN

BRCGS Certified

Product Country of Origin/Place of Other

Provenance

Additional Origin Details

Spain/Netherlands/Italy/Turkey

PRODUCT
CHARACTERISTICS

Standards Testing

Do you undertake trend analysis of No
microbiological results?

Is shelf life testing undertaken? No

Microbiological Standards

Organism	Description	Frequency	Target	Maximum	Sample (g or ml)
E. Coli (cfu/g or ml)		Every Batch	<0	0	1
Total Viable Count (TVC) (cfu/g or ml)		Every Batch	<10000	10000	1
Salmonella (cfu/g or ml)		Every Batch	<0	0	25
Yeast (cfu/g or ml)		Every Batch	<1000	1000	1
Moulds (cfu/g or ml)		Every Batch	<1000	1000	1

ORGANOLEPTICS

Appearance

Fine off white/cream coloured powder

Aroma

bland

Taste

bland

Texture

fine powder

HAZARD CONTROLS

Metal Detection Yes

CONFIGURATION

Case Configuration

Inner Pack Configuration

Total Quantity of Inner Components in 4 Units

Outer Case

Is the Outer Case Splittable? Yes

PRODUCT WEIGHTS

Inner Component

Variable Weight Consumer Item Yes

Inner Component Weight 3500 g

Net Drained Weight 3.5 kg

e mark Yes

Outer Case

Outer Case Gross Weight 14.4 kg

Outer Case Net Weight 14 kg

PRODUCT DIMENSIONS

Inner Component

Inner Component Depth 98 mm

Inner Component Width 125 mm

Inner Component Height 394 mm

Outer Case

Outer Case Depth 345 mm

Outer Case Width 290 mm

Outer Case Height 230 mm

PALLET INFORMATION

Quantity of Cases Per Pallet Layer 11 Cases

Pallet Type UK Standard Pallet

Quantity of Layers Per Pallet 6 Layers

Pallet Height 1.4 MTR

Quantity of Cases Per Pallet 66 Cases

Pallet Gross Weight 990 kg

PACKAGING

Inner Component Packaging

Type	Materials	Weight	Recycled Plastic %	Recyclable	Returnable	Composite
Bag	Paper/Cardboard / Paper	24 g	- %	Yes	No	No

Outer Case Packaging

Type	Materials	Weight	Recycled Plastic %	Recyclable	Returnable	Composite
Case	Paper/Cardboard / Corrugated	311 g	- %	Yes	No	No

MARKETING INFORMATION

Marketing Description

This starch is extracted from the endosperm of the corn kernel and is a staple ingredient commonly used as a binding agent in baking or a thickener in soups, and sauces. In the UK we refer to it as cornflour but in US it is known as corn starch. It actually doesn't occur naturally in any food but due to it's usefulness in cooking it is often found in ingredient listings. Unfortunately it has little nutritional benefits because most of the protein, fibre and other vitamins are lost during the production process.

OTHER INFORMATION

Commodity Code	11081200	Value Added Tax Rate	No VAT
----------------	----------	----------------------	--------

Manufacturer Comments

ECO CREDENTIALS: Use of nano film stretchwrap to wrap pallets securely and substituting virgin material in heat tunnel wrap and pallet toppers, with 30% recycled material, has noticeably reduced our plastic use. Minimum Order Quantities/mixed pallets: 1 case allowable but must be made up with other products from the range to create one full pallet to make best use of haulage/fuel use.

CONTACT INFORMATION

Address	Technical Contact
Richard Whittaker Ltd	Shaun Clegg
The Mayfield Centre Units 1-3	Quality Manager
The Mayfield Centre Units 1-3	shaun.clegg@richard-whittaker.co.uk
Rochdale	
Greater Manchester	P: (Phone) 01706 341700
OL16 2UZ	
England	
P: (Phone) 01706 341 700	
Complaints Contact	Commercial Contact
S Clegg	Paul Devenny
Quality Manager	Sales
shaun.clegg@richard-whittaker.co.uk	paul.devenny@richard-whittaker.co.uk
P: (Phone) 01706 341700	P: (Phone) 01706 341700

The information on the [Erudus System](#) has been supplied by the manufacturers of the products and, whilst the owners of the Erudus System take steps to ensure the information is regularly updated, they give no warranty and no guarantee that the information is accurate. Product information and ingredients may change, please always read product labels carefully in addition to using the information provided by Erudus.

We do not accept liability for any inaccuracies or incorrect information contained on this site. Please visit <http://www.erudus.com/terms-and-conditions> for full terms and conditions.