

Changed Jun 03, 2024 15:21

Reviewed Jun 03, 2024 15:21

Erudus ID 2b4e93e28bc1472d93da80df385ad96f

Version 2.2

09082

Cirio Pelati Peeled Plum Tomatoes 6 x 2500g

Peeled Plum Tomatoes 6x2500g

PRODUCT DESCRIPTION

Whole peeled tomatoes in tomato juice

Brand	Conserve Italia Soc. coop. agricola
Manufacturer Product Code	041618
Product Type	Food
Product Category	Vegetables - Canned
Storage Type	Ambient
Erudus ID	2b4e93e28bc1472d93da80df385ad96f
Specification Type	Fruit and Vegetables

RECEIVED

Thomas Ridley QC Dept.
10:53 am, 5 Jun 2024



The food information supplied by Thomas Ridley Foodservice has been provided by the respective product manufacturers. Whilst we use reasonable endeavours to check this information and ensure its accuracy, we do not give any warranty (whether express or implied), guarantee or representation that it is true, accurate or complete in any respect.

As product information, ingredients, nutritional guides and dietary or allergy advice may change from time to time, we recommend that you always carefully read the product label prior to using or consuming any such products. You should not solely rely upon the information we provide and make your own assessment as to the suitability or otherwise of any given product.



Inner Component GTIN 8000320010040

Outer Case GTIN 8000320996504



INGREDIENTS

Ingredient Declaration

Peeled plum tomatoes, tomato juice, acidity regulator: citric acid.

ALLERGENS

Product Contains:

Celery/Celериac	No	Mustard	No
Cereals Containing Gluten	No	Nuts (Tree)	No
Barley	No	Almond nuts	No
Oats	No	Brazil nuts	No
Rye	No	Cashew nuts	No
Wheat (including Spelt and Khorasan)	No	Hazelnuts	No
Crustacea	No	Macadamia (Queensland) nuts	No
Eggs	No	Pecan nuts	No
Fish	No	Pistachio nuts	No
Lupin	No	Walnuts	No
Milk	No	Peanuts	No
Molluscs	No	Sesame Seeds	No
		Soybeans	No
		Sulphur Dioxide and Sulphites	No

SUPPLEMENTARY INGREDIENT INFORMATION

Palm Oil	No
Hydrogenated Vegetable Oil/Fat	No
GM Protein/DNA	No

ADDITIVES

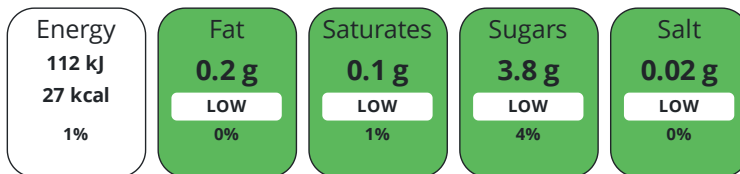
Product Contains:

Artificial Antioxidants	No	Artificial Flavourings	No
Artificial Colours	No	Artificial Preservatives	No
Artificial Flavour Enhancers	No	Artificial Sweeteners	No
Vegan Diet	Suitable for	Vegetarian Diet	Suitable for
Halal Diet	No	Kosher Diet	No

DIET SUITABILITY

NUTRITIONAL INFORMATION

Each 100g/ml portion contains:



of your reference intake.

Typical values per 100g/ml : Energy 27kcal / 112kJ

Nutrient	per 100g	RI per 100g	per 100g serving	RI per 100g serving
Energy (kJ)	112 kJ	1%	112 kJ	1%
Energy (kcal)	27 kcal	1%	27 kcal	1%
Fat	0.2 g	0%	0.2 g	0%
of which Saturates	0.1 g	1%	0.1 g	1%
Carbohydrate	4.2 g	2%	4.2 g	2%
of which Sugars	3.8 g	4%	3.8 g	4%
Fibre	1.1 g		1.1 g	
Protein	1.1 g	2%	1.1 g	2%
Salt	0.02 g	0%	-	
Serving Size	100 g			

SUPPLEMENTARY NUTRITIONAL INFORMATION

HANDLING & STORAGE INFORMATION

Directions For Use

Ideal for sauces, meat and long cooking dishes

Storage Instructions

Ambient storage.

Storage Instructions After Opening

Once opened transfer to a non metallic bowl and keep refrigerated. Consume within 3-4 days

Shelf Life from Time of Production 1095 Days

ACCREDITATIONS/ CERTIFICATIONS/ ASSURANCE SCHEMES ORIGIN

BRCGS Certified

IFS Food Standard

Product Country of Origin/Place of Italy

Provenance

PRODUCT CHARACTERISTICS

Standards Testing

Do you undertake trend analysis of microbiological results? No

Is shelf life testing undertaken? Yes

Commercially Sterile Yes

Analytical Standards

Test	Description	Frequency	Target	Range	Sample (g or ml)	
Brix (°Bx)		Hourly	>6	6 to 10	2500	
pH		Hourly	=4.3	4.2 to 4.4	2500	
Physical Standards						
Test	Description	Frequency	Target	Range	Sample (g or ml)	
Weight (g)		Hourly	>2500	2462.5 to 2600	2500	
CONFIGURATION	Case Configuration		Inner Pack Configuration			
	Total Quantity of Inner Components in Outer Case	6 Units				
	Is the Outer Case Splittable?	Yes				
PRODUCT WEIGHTS	Inner Component					
	Variable Weight Consumer Item	No				
	Inner Component Weight	2500 g				
	Outer Case					
	Outer Case Gross Weight	17.4 kg				
	Outer Case Net Weight	15 kg				
PRODUCT DIMENSIONS	Inner Component					
	Inner Component Depth	155 mm				
	Inner Component Width	155 mm				
	Inner Component Height	152 mm				
	Outer Case					
	Outer Case Depth	490 mm				
	Outer Case Width	320 mm				
	Outer Case Height	160 mm				
PALLET INFORMATION	Quantity of Cases Per Pallet Layer	7 Cases	Pallet Height	1.6 MTR		
	Quantity of Layers Per Pallet	9 Layers	Pallet Gross Weight	1121.2 kg		
	Quantity of Cases Per Pallet	63 Cases				
PACKAGING	Inner Component Packaging					
	Type	Materials	Weight	Recycled Plastic %	Recyclable	Returnable Composite
	Can	Paper/Cardboard	5.6 g	- %		
	Can	Steel	238 g	- %		
	Outer Case Packaging					
	Type	Materials	Weight	Recycled Plastic %	Recyclable	Returnable Composite
	Case	Plastic	70 g	- %		
	Case	Paper/Cardboard	60 g	- %		
	Case	Steel	1428 g	- %		
	Transport Packaging					
Type	Materials	Weight	Recycled Plastic %	Recyclable	Returnable Composite	
Other	Plastic	626 g	- %		Yes	
Other	Paper/Cardboard	192 g	- %		Yes	
Other	Wood	25000 g	- %		Yes	

OTHER
INFORMATION
CONTACT
INFORMATION

Address

Conserve Italia Soc. coop. agricola
Via Poggi, 11
40068 San Lazzaro di Savena
Bologna
Italy

P: (Phone) 00 39 051 622 8311

Technical Contact

Alessia De Santis
Quality Assurance
adesantis@ccci.it

P: (Phone) 00 39 051 622 8337

Commercial Contact

Terry Overs
Foodservice Manager
tovers@ccci.it

P: (Phone) 07796 697891

The information on the [Erudus System](#) has been supplied by the manufacturers of the products and, whilst the owners of the Erudus System take steps to ensure the information is regularly updated, they give no warranty and no guarantee that the information is accurate. Product information and ingredients may change, please always read product labels carefully in addition to using the information provided by Erudus.

We do not accept liability for any inaccuracies or incorrect information contained on this site.
Please visit <http://www.erudus.com/terms-and-conditions> for full terms and conditions.