

09103

# Metcalfe's® Yoghurt & Strawberry Ricecakes 12 x 34g

Metcalfe's® Yoghurt & Strawberry Ricecakes 12x34g

## PRODUCT DESCRIPTION

Rice cakes with yoghurt flavoured coating, sprinkled with freeze-dried strawberry pieces.

<b>Brand</b>	Kettle Foods Ltd (Valeo Snackfoods Ltd)
<b>Manufacturer Product Code</b>	FG007251
<b>Product Type</b>	Food
<b>Product Category</b>	Biscuits, Wafers and Crackers
<b>Storage Type</b>	Ambient
<b>Erudus ID</b>	f05cfbd3164c40a994fda1b3e1d2daa1
<b>Specification Type</b>	Legacy

**Inner Component GTIN** 5017764002824

**Outer Case GTIN** 05017764002831



## INGREDIENTS

### Ingredient Declaration

**YOGHURT** Flavoured Coating (58%) (Sugar, Palm Oil, **LACTOSE** Powder (**MILK**), **YOGHURT** Powder (6%) (**MILK**), Emulsifier (**SOYA** Lecithin)), Wholegrain Brown Rice, Freeze-Dried Strawberries (2%).

## ALLERGENS

Product Contains:

<b>Celery/Celeriac</b>	No	<b>Mustard</b>	No
<b>Cereals Containing Gluten</b>	No	<b>Nuts (Tree)</b>	No
<b>Barley</b>	No	<b>Almond nuts</b>	No
<b>Oats</b>	No	<b>Brazil nuts</b>	No
<b>Rye</b>	No	<b>Cashew nuts</b>	No
<b>Wheat (including Spelt and Khorasan)</b>	No	<b>Hazelnuts</b>	No
<b>Gluten content &lt;20ppm</b>	Yes	<b>Macadamia (Queensland) nuts</b>	No
<b>Crustacea</b>	No	<b>Pecan nuts</b>	No
<b>Eggs</b>	No	<b>Pistachio nuts</b>	No
<b>Fish</b>	No	<b>Walnuts</b>	No
<b>Lupin</b>	No	<b>Peanuts</b>	No
<b>Milk</b>	Yes	<b>Sesame Seeds</b>	No
<b>Molluscs</b>	No	<b>Soybeans</b>	Yes
		<b>Sulphur Dioxide and Sulphites</b>	No

### Additional Allergen Information

For allergens see ingredients in bold.

## SUPPLEMENTARY INGREDIENT INFORMATION

<b>Palm Oil</b>	Yes
<b>Hydrogenated Vegetable Oil/Fat</b>	No
<b>GM Protein/DNA</b>	No

ADDITIVES

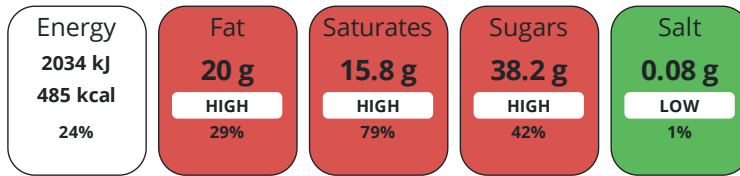
Product Contains:

<b>Artificial Antioxidants</b>	No	<b>Artificial Flavourings</b>	No
<b>Artificial Colours</b>	No	<b>Artificial Preservatives</b>	No
<b>Artificial Flavour Enhancers</b>	No	<b>Artificial Sweeteners</b>	No
<b>Suitable for Coeliacs</b>	Yes	<b>Halal Diet</b>	No
<b>Kosher Diet</b>	No	<b>Vegetarian Diet</b>	Suitable for
<b>Vegan Diet</b>	No		

DIET SUITABILITY

NUTRITIONAL INFORMATION

Each 100g/ml portion contains:



of your reference intake.

Typical values per 100g/ml : Energy 485kcal / 2034kj

Nutrient	per 100g/ml	RI per 100g/ml	per 17g/ml serving	RI per 17g/ml serving
<b>Energy (kJ)</b>	2034 kJ	24%	345.8 kJ	4%
<b>Energy (kcal)</b>	485 kcal	24%	82.5 kcal	4%
<b>Fat</b>	20 g	29%	3.4 g	5%
of which Saturates	15.8 g	79%	2.7 g	14%
of which Mono-unsaturates	2.3 g		0.4 g	
of which Polyunsaturates	0.9 g		0.2 g	
<b>Carbohydrate</b>	71.2 g	27%	12.1 g	5%
of which Sugars	38.2 g	42%	6.5 g	7%
of which Starch	33 g		5.6 g	
<b>Fibre</b>	0.9 g		0.2 g	
<b>Protein</b>	4.5 g	9%	0.8 g	2%
<b>Salt</b>	0.08 g	1%	-	
<b>Sodium</b>	32 mg		5.4 mg	

**Serving Size** 17 g

SUPPLEMENTARY NUTRITIONAL INFORMATION

**Trans Fats per 100 g/ml** 0.1 g

HFSS (HIGH IN FAT, SALT AND SUGAR)

**HFSS Status** Yes

HANDLING & STORAGE INFORMATION

**Directions For Use** n/a

**Storage Instructions**  
Store in a col dry place, away from direct light.

**Shelf Life from Time of Production** 273 Days

ACCREDITATIONS/ CERTIFICATIONS/ ASSURANCE SCHEMES

**BRCGS Certified**  
**Roundtable of Sustainable Palm Oil (RSPO)**

**ISO 14001 (Environmental Management)**

ORIGIN	<b>Product Country of Origin/Place of Provenance</b> United Kingdom																																									
PRODUCT CHARACTERISTICS	<b>Additional Origin Details</b>																																									
	n/a																																									
	Standards Testing																																									
	<b>Do you undertake trend analysis of microbiological results?</b>		Yes	<b>Is shelf life testing undertaken?</b>		Yes																																				
	Microbiological Standards																																									
	<table border="1"> <thead> <tr> <th>Organism</th> <th>Description</th> <th>Frequency</th> <th>Target</th> <th>Maximum</th> <th>Sample (g or ml)</th> </tr> </thead> <tbody> <tr> <td>Total Viable Count (TVC) (cfu/g or ml)</td> <td></td> <td>Annually</td> <td>&lt;1000</td> <td>10000</td> <td>-</td> </tr> <tr> <td>Salmonella (cfu/g or ml)</td> <td></td> <td>Annually</td> <td>&lt;0</td> <td>0</td> <td>-</td> </tr> <tr> <td>Moulds (cfu/g or ml)</td> <td></td> <td>Annually</td> <td>&lt;100</td> <td>1000</td> <td>-</td> </tr> <tr> <td>E. Coli (cfu/g or ml)</td> <td></td> <td>Annually</td> <td>&lt;10</td> <td>10</td> <td>-</td> </tr> <tr> <td>Enterobacteriaceae (cfu/g or ml)</td> <td></td> <td>Annually</td> <td>&lt;10</td> <td>100</td> <td>-</td> </tr> </tbody> </table>						Organism	Description	Frequency	Target	Maximum	Sample (g or ml)	Total Viable Count (TVC) (cfu/g or ml)		Annually	<1000	10000	-	Salmonella (cfu/g or ml)		Annually	<0	0	-	Moulds (cfu/g or ml)		Annually	<100	1000	-	E. Coli (cfu/g or ml)		Annually	<10	10	-	Enterobacteriaceae (cfu/g or ml)		Annually	<10	100	-
	Organism	Description	Frequency	Target	Maximum	Sample (g or ml)																																				
Total Viable Count (TVC) (cfu/g or ml)		Annually	<1000	10000	-																																					
Salmonella (cfu/g or ml)		Annually	<0	0	-																																					
Moulds (cfu/g or ml)		Annually	<100	1000	-																																					
E. Coli (cfu/g or ml)		Annually	<10	10	-																																					
Enterobacteriaceae (cfu/g or ml)		Annually	<10	100	-																																					
CONFIGURATION	Case Configuration		Inner Pack Configuration																																							
	<b>Total Quantity of Inner Components in Outer Case</b>		12 Units	<b>Count per Inner Component</b>		2																																				
	<b>Is the Outer Case Splittable?</b>		No																																							
PRODUCT WEIGHTS	Inner Component																																									
	<b>Variable Weight Consumer Item</b>		No																																							
	<b>Inner Component Weight</b>		34 g																																							
	<b>Weight/Volume</b>																																									
	n/a																																									
	Outer Case																																									
PRODUCT DIMENSIONS	<b>Outer Case Gross Weight</b>		0.5 kg																																							
	<b>Outer Case Net Weight</b>		0.43 kg																																							
	Inner Component																																									
	<b>Inner Component Depth</b>		25 mm																																							
	<b>Inner Component Width</b>		105 mm																																							
	<b>Inner Component Height</b>		145 mm																																							
	Outer Case																																									
	<b>Outer Case Depth</b>		298 mm																																							
	<b>Outer Case Width</b>		99 mm																																							
<b>Outer Case Height</b>		140 mm																																								
PALLET INFORMATION	<b>Quantity of Cases Per Pallet Layer</b>		40 Cases	<b>Pallet Height</b>		1.41 MTR																																				
	<b>Quantity of Layers Per Pallet</b>		9 Layers	<b>Pallet Gross Weight</b>		200 kg																																				
	<b>Quantity of Cases Per Pallet</b>		360 Cases																																							
PACKAGING	Inner Component Packaging																																									
	<table border="1"> <thead> <tr> <th>Type</th> <th>Materials</th> <th>Weight</th> <th>Recycled Plastic %</th> <th>Recyclable</th> <th>Returnable</th> <th>Composite</th> </tr> </thead> <tbody> <tr> <td>Film</td> <td>Plastic</td> <td>24 g</td> <td>0.00 %</td> <td></td> <td></td> <td></td> </tr> </tbody> </table>						Type	Materials	Weight	Recycled Plastic %	Recyclable	Returnable	Composite	Film	Plastic	24 g	0.00 %																									
	Type	Materials	Weight	Recycled Plastic %	Recyclable	Returnable	Composite																																			
Film	Plastic	24 g	0.00 %																																							

Outer Case Packaging

Type	Materials	Weight	Recycled Plastic %	Recyclable	Returnable	Composite
Case	Paper/Cardboard	68 g	- %			

Transport Packaging

Type	Materials	Weight	Recycled Plastic %	Recyclable	Returnable	Composite
Other	Plastic	200 g	0.00 %		Yes	
Other	Wood	20000 g	- %		Yes	

OTHER INFORMATION

<b>Intrastat/Taric Code</b>	7011
<b>Commodity Code</b>	1806903900

**Manufacturer Comments**

n/a

CONTACT INFORMATION

Address

Kettle Foods Ltd (Valeo Snackfoods Ltd)  
 Barnard Road,  
 Bowthorpe  
 Norwich  
 Norfolk  
 NR5 9JP  
 United Kingdom

**P: (Phone)** +44 1 491 827 400

Commercial Contact

Ben Brindley  
 National Account Manager (Valeo Snackfoods)  
 ben.brindley@valeosnackfoods.com

**P: (Phone)** +441603 744788

The information on the [Erudus System](#) has been supplied by the manufacturers of the products and, whilst the owners of the Erudus System take steps to ensure the information is regularly updated, they give no warranty and no guarantee that the information is accurate. Product information and ingredients may change, please always read product labels carefully in addition to using the information provided by Erudus.

We do not accept liability for any inaccuracies or incorrect information contained on this site.  
 Please visit <http://www.erudus.com/terms-and-conditions> for full terms and conditions.