

Changed Apr 28, 2023 14:01

Erudus ID ffecd0c78ede47dfade1f662c486dfd4

Version 1.0

09154

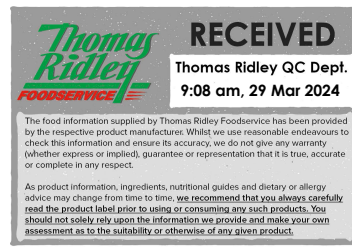
Raspberry Pavlova 12ptn (1 x 1)

Raspberry Pavlova 1x

PRODUCT DESCRIPTION

A meringue pavlova with a layer of home-made raspberry sauce topped whipped dairy cream and a generous topping of raspberries. Finished with 12 mini meringue shells to denote (uncut) portions. (1 x 1)

Brand	Central Foods Group Ltd
Manufacturer Product Code	MSRP01
Product Type	Food
Product Category	Desserts
Storage Type	Frozen
Erudus ID	ffecd0c78ede47dfade1f662c486dfd4
Specification Type	Legacy



Thomas Ridley
FOODSERVICE

RECEIVED
Thomas Ridley QC Dept.
9:08 am, 29 Mar 2024

The food information supplied by Thomas Ridley Foodservice has been provided by the respective product manufacturer. Whilst we use reasonable endeavours to check this information and ensure its accuracy, we do not give any warranty (whether express or implied), guarantee or representation that it is true, accurate or complete in any respect.

As product information, ingredients, nutritional guides and dietary or allergy advice may change from time to time, we recommend that you always carefully read the product label prior to using or consuming any such products. You should not solely rely upon the information we provide and make your own assessment as to the suitability or otherwise of any given product.



Outer Case GTIN 5060062470604



INGREDIENTS

Ingredient Declaration

Sugar, Dairy Cream (**MILK**) (29%), Raspberry Sauce (14%) (Raspberries (8%), Sugar, Cornflour, Gelling Agent (Pectin)), Raspberries (14%), Pasteurised **EGG** Albumen.

ALLERGENS

Product Contains:

Celery/Celeriac	No	Mustard	No
Cereals Containing Gluten	No	Nuts (Tree)	May Contain
Barley	No	Almond nuts	May Contain
Oats	No	Brazil nuts	No
Rye	No	Cashew nuts	No
Wheat (including Spelt and Khorasan)	No	Hazelnuts	May Contain
Gluten content <20ppm	Yes	Macadamia (Queensland) nuts	No
Crustacea	No	Pecan nuts	May Contain
Eggs	Yes	Pistachio nuts	No
Fish	No	Walnuts	May Contain
Lupin	No	Peanuts	No
Milk	Yes	Sesame Seeds	No
Molluscs	No	Soybeans	No
		Sulphur Dioxide and Sulphites	No

Risk Source:

Additional Allergen Information

For allergens, see ingredients in CAPITALS.

SUPPLEMENTARY
INGREDIENT
INFORMATION

Palm Oil	No
Hydrogenated Vegetable Oil/Fat	No
GM Protein/DNA	No

ADDITIVES

Product Contains:

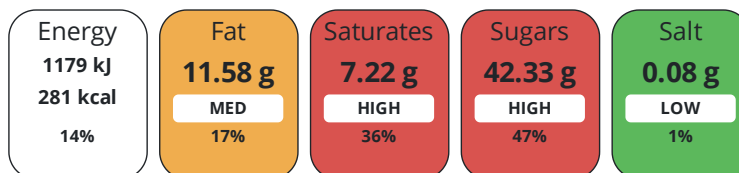
Artificial Antioxidants	No	Artificial Flavourings	No
Artificial Colours	No	Artificial Preservatives	No
Artificial Flavour Enhancers	No	Artificial Sweeteners	No

DIET
SUITABILITY

Suitable for Coeliacs	Yes	Halal Diet	No
Kosher Diet	No	Vegetarian Diet	Suitable for
Vegan Diet	No		

NUTRITIONAL
INFORMATION

Each 100g/ml portion contains:



of your reference intake.

Typical values per 100g/ml : Energy 281kcal / 1179kJ

Nutrient	per 100g/ml	RI per 100g/ml	per 70g/ml serving	RI per 70g/ml serving
Energy (kJ)	1179 kJ	14%	825.3 kJ	10%
Energy (kcal)	281 kcal	14%	196.7 kcal	10%
Fat	11.58 g	17%	8.1 g	12%
of which Saturates	7.22 g	36%	5.1 g	26%
Carbohydrate	42.61 g	16%	29.8 g	11%
of which Sugars	42.33 g	47%	29.6 g	33%
Fibre	0.58 g		0.4 g	
Protein	1.48 g	3%	1 g	2%
Salt	0.08 g	1%	0.1 g	2%
Sodium	30 mg		21 mg	

Serving Size 70 g

SUPPLEMENTARY
NUTRITIONAL
INFORMATION

HFSS (HIGH IN
FAT, SALT AND
SUGAR)

HFSS Status Yes

HANDLING &
STORAGE
INFORMATION

Directions For Use

From Frozen unless otherwise stated To defrost: Allow to thaw for 4 hrs at 4°C. Once defrosted, store at 4°C and consume within 24 hours. Do not refreeze. Do not thaw in the microwave.

Storage Instructions

Keep Frozen. Store at -18°C or below

Shelf Life from Time of Production 341 Days

ACCREDITATIONS/
CERTIFICATIONS/
ASSURANCE
SCHEMES

BRCGS Certified
Roundtable of Sustainable Palm Oil (RSPO)

Other Accreditation

ORIGIN	Product Country of Origin/Place of Provenance		Ireland			
	Additional Origin Details					
PRODUCT CHARACTERISTICS	Ireland					
	Standards Testing					
	Do you undertake trend analysis of microbiological results?		No	Is shelf life testing undertaken?		No
	Microbiological Standards					
	Organism	Description	Frequency	Target	Maximum	Sample (g or ml)
	Bacillus Cereus (cfu/g or ml)		Annually	<1000	100000	-
	Coliforms (cfu/g or ml)		Annually	<100	10000	-
	E. Coli (cfu/g or ml)		Annually	<20	100	-
	Listeria Monocytogenes (cfu/g or ml)	Not detected in 25g	Annually	=0	0	25
	Staphylococcus Aureus (cfu/g or ml)		Annually	<20	10000	-
Total Viable Count (TVC) (cfu/g or ml)		Annually	<100000	10000000	-	
Salmonella (cfu/g or ml)	Not detected in 25g	Annually	=0	0	25	
Yeast (cfu/g or ml)		Annually	<1000	1000	-	
Moulds (cfu/g or ml)		Annually	<1000	1000	-	
CONFIGURATION	Case Configuration		Inner Pack Configuration			
	Total Quantity of Inner Components in Outer Case		1 Units			
	Is the Outer Case Splittable?		No			
PRODUCT WEIGHTS	Inner Component					
	Variable Weight Consumer Item		No			
	Weight/Volume					
	1					
	Outer Case					
Outer Case Gross Weight		1.15 kg				
Outer Case Net Weight		0.9 kg				
PRODUCT DIMENSIONS	Inner Component					
	Inner Component Depth		0 mm			
	Inner Component Width		0 mm			
	Inner Component Height		0 mm			
	Outer Case					
	Outer Case Depth		273 mm			
	Outer Case Width		273 mm			
	Outer Case Height		105 mm			
	PALLET INFORMATION	Quantity of Cases Per Pallet Layer		12 Cases		Pallet Height
Quantity of Layers Per Pallet		15 Layers		Pallet Gross Weight	222 kg	
Quantity of Cases Per Pallet		180 Cases				

PACKAGING

Inner Component Packaging

Type	Materials	Weight	Recycled Plastic %	Recyclable	Returnable	Composite
Bag	Plastic	13 g	- %			
Bag	Paper/Cardboard	236 g	- %			

Transport Packaging

Type	Materials	Weight	Recycled Plastic %	Recyclable	Returnable	Composite
Other	Plastic	280 g	- %		Yes	

OTHER INFORMATION CONTACT INFORMATION

Address

Central Foods Group Ltd
 Maple Court
 Ash Lane, Collingtree
 Collingtree
 Northants
 NN4 0NB
 England

P: (Phone) 01604 858 522

Complaints Contact

Karen Wright
 Customer Care Admin Assistant
 kwright@centralfoods.co.uk

P: (Phone) 01604 878 299

Technical Contact

Chris Stobart
 Technical Manager
 technical@centralfoods.co.uk

P: (Phone) 01604 878 276

Commercial Contact

Oliver Sampson
 Commercial Manager
 osampson@centralfoods.co.uk

P: (Phone) 07715 073 273

The information on the [Erudus System](#) has been supplied by the manufacturers of the products and, whilst the owners of the Erudus System take steps to ensure the information is regularly updated, they give no warranty and no guarantee that the information is accurate. Product information and ingredients may change, please always read product labels carefully in addition to using the information provided by Erudus.

We do not accept liability for any inaccuracies or incorrect information contained on this site. Please visit <http://www.erudus.com/terms-and-conditions> for full terms and conditions.