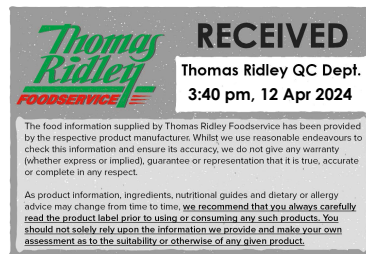


Changed Apr 11, 2024 14:17

Reviewed Apr 11, 2024 14:17

Erudus ID d652b3eff2e84455b6d283aa4cce04c2

Version 2.0



09187

# Blue Horizon Skinless Boneless Pollock Fillets 170-200g (6-7oz) 1 x 20

Pollock Fillet

## PRODUCT DESCRIPTION

20 Skinless Boneless Pollock fillets that have been individually quick frozen, with a protective water glaze of 20% and packed into a blue lined case.

Brand	Smales Fish Merchants Ltd
Manufacturer Product Code	145260
Product Type	Food
Product Category	Fish - Portioned
Storage Type	Frozen
Erudus ID	d652b3eff2e84455b6d283aa4cce04c2
Specification Type	Fish and Seafood
Outer Case GTIN	5024113002534



## INGREDIENTS

### Ingredient Declaration

Pollock (*Theragra chalcogramma*) (FISH) 80% Water 20% (as a protective glaze)

## ALLERGENS

Product Contains:

Celery/Celeriac	No	Mustard	No
Cereals Containing Gluten	No	Nuts (Tree)	No
Barley	No	Almond nuts	No
Oats	No	Brazil nuts	No
Rye	No	Cashew nuts	No
Wheat (including Spelt and Khorasan)	No	Hazelnuts	No
Crustacea	No	Macadamia (Queensland) nuts	No
Eggs	No	Pecan nuts	No
Fish	Yes	Pistachio nuts	No
Lupin	No	Walnuts	No
Milk	No	Peanuts	No
Molluscs	No	Sesame Seeds	No
		Soybeans	No
		Sulphur Dioxide and Sulphites	No

### Additional Allergen Information

Contains: FISH

## SUPPLEMENTARY INGREDIENT INFORMATION

Palm Oil	No
Hydrogenated Vegetable Oil/Fat	No
GM Protein/DNA	No

ADDITIVES

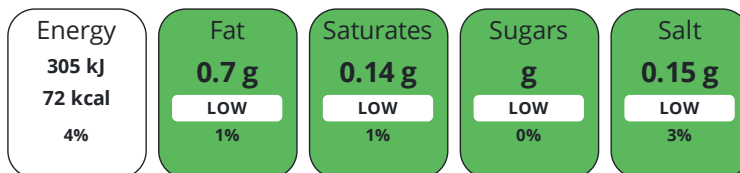
Product Contains:

<b>Artificial Antioxidants</b>	No	<b>Artificial Flavourings</b>	No
<b>Artificial Colours</b>	No	<b>Artificial Preservatives</b>	No
<b>Artificial Flavour Enhancers</b>	No	<b>Artificial Sweeteners</b>	No
<b>Halal Diet</b>	No	<b>Kosher Diet</b>	No

DIET SUITABILITY

NUTRITIONAL INFORMATION

Each 100g/ml portion contains:



of your reference intake.

Typical values per 100g/ml : Energy 72kcal / 305kj

Nutrient	per 100g	RI per 100g
<b>Energy (kJ)</b>	305 kJ	4%
<b>Energy (kcal)</b>	72 kcal	4%
<b>Fat</b>	0.7 g	1%
of which Saturates	0.14 g	1%
of which Mono-unsaturates	0.17 g	
of which Polyunsaturates	0.16 g	
<b>Carbohydrate</b>	0 g	0%
of which Sugars	0 g	0%
<b>Protein</b>	16.4 g	33%
<b>Salt</b>	0.15 g	3%
<b>Sodium</b>	60 mg	

SUPPLEMENTARY NUTRITIONAL INFORMATION

**Trans Fats per 100 g/ml** 0 g

HANDLING & STORAGE INFORMATION

**Directions For Use**

Defrost overnight in refrigerator at +5oC or less. Once defrosted use within 24 hours

**Storage Instructions**

Store at or below -18oC

**Shelf Life from Time of Production** 730 Days **Exempt From Shelf Life Labelling** No

ORIGIN

**Product Country of Origin/Place of Provenance** China

**Additional Origin Details**

Produced and Packed in UK or China Trawl Caught in North East or North West Pacific Ocean FAO61 or 67

Standards Testing

PRODUCT CHARACTERISTICS

**Do you undertake trend analysis of microbiological results?** No **Is shelf life testing undertaken?** No

Microbiological Standards

Organism	Description	Frequency	Target	Maximum	Sample (g or ml)
Coliforms (cfu/g or ml)		Occasionally	<100	1000	100

Organism	Description	Frequency	Target	Maximum	Sample (g or ml)
E. Coli (cfu/g or ml)		Occasionally	<50	100	100
Listeria SPP (cfu/g or ml)		Occasionally	<0	0	25
Staphylococcus Aureus (cfu/g or ml)		Occasionally	<100	500	100
Total Viable Count (TVC) (cfu/g or ml)		Occasionally	<100000	1000000	100

Physical Standards

Test	Description	Frequency	Target	Range	Sample (g or ml)
Weight (g)		Occasionally	<185	170 to 200	200

CONFIGURATION

Case Configuration Inner Pack Configuration

**Total Quantity of Inner Components in** 1 Units

**Outer Case**

**Is the Outer Case Splittable?** No

PRODUCT WEIGHTS

Inner Component

**Variable Weight Consumer Item** Yes

Outer Case

**Outer Case Gross Weight** 3.4 kg

**Outer Case Net Weight** 2.72 kg

PRODUCT DIMENSIONS

Inner Component

**Inner Component Depth** 700 mm

**Inner Component Width** 0 mm

**Inner Component Height** 600 mm

Outer Case

**Outer Case Depth** 380 mm

**Outer Case Width** 290 mm

**Outer Case Height** 110 mm

PALLET INFORMATION

**Quantity of Cases Per Pallet Layer** 14 Cases **Pallet Height** 1.8 MTR

**Quantity of Layers Per Pallet** 10 Layers **Pallet Gross Weight** 504 kg

**Quantity of Cases Per Pallet** 140 Cases

PACKAGING

Inner Component Packaging

Type	Materials	Weight	Recycled Plastic %	Recyclable	Returnable	Composite
Bag	Plastic	30 g	- %			

Outer Case Packaging

Type	Materials	Weight	Recycled Plastic %	Recyclable	Returnable	Composite
Case	Paper/Cardboard	350 g	- %			

OTHER INFORMATION

**Intrastat/Taric Code** 0

**Manufacturer Comments**

The minimum order quantity from Smales is one mixed pallet, as long as you order a full pallet you could just order one case. Smales has BRC in wholesale and storage

CONTACT  
INFORMATION

Address

Smales Fish Merchants Ltd  
30, West Dock Street  
West Dock Street  
Hull  
HU3 4HL  
England

P: (Phone) 01482 324997

Complaints Contact

Sally Johnson  
Technical Manager  
sally.johnson@smales.co.uk

P: (Phone) 01482 593696

Technical Contact

Sally Johnson  
Technical Manager  
sally.johnson@smales.co.uk

P: (Phone) 01482 593696

The information on the [Erudus System](#) has been supplied by the manufacturers of the products and, whilst the owners of the Erudus System take steps to ensure the information is regularly updated, they give no warranty and no guarantee that the information is accurate. Product information and ingredients may change, please always read product labels carefully in addition to using the information provided by Erudus.

We do not accept liability for any inaccuracies or incorrect information contained on this site.  
Please visit <http://www.erudus.com/terms-and-conditions> for full terms and conditions.