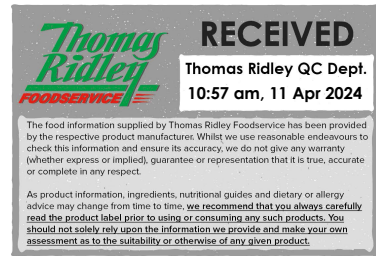


Changed Apr 10, 2024 14:27

Reviewed Apr 10, 2024 14:27

Erudus ID 60bf6a08f7c747db8c3f7c0be3b465f9

Version 2.0



Thomas Ridley
FOODSERVICE

RECEIVED
Thomas Ridley QC Dept.
10:57 am, 11 Apr 2024

The food information supplied by Thomas Ridley Foodservice has been provided by the respective product manufacturer. Whilst we use reasonable endeavours to check this information and ensure its accuracy, we do not give any warranty (whether express or implied), guarantee or representation that it is true, accurate or complete in any respect.

As product information, ingredients, nutritional guides and dietary or allergy advice may change from time to time, we recommend that you always carefully read the product label prior to using or consuming any such products. You should not solely rely upon the information we provide and make your own assessment as to the suitability or otherwise of any given product.



09194

HNZ Tomato Ketchup Squeezy (6) 1.35kg

Tomato Ketchup 6x1.35kg

PRODUCT DESCRIPTION

Tomato ketchup

Brand	H.J. Heinz
Manufacturer Product Code	71580710
Product Type	Food
Product Category	Condiments
Storage Type	Ambient
Erudus ID	60bf6a08f7c747db8c3f7c0be3b465f9
Specification Type	Generic



Inner Component GTIN	50157969
Outer Case GTIN	05000157056375



INGREDIENTS

Ingredient Declaration

Tomatoes (148g per 100g tomato ketchup), Spirit Vinegar, Sugar, Salt, Spice and herb extracts (contains CELERY), Spice

ALLERGENS

Product Contains:

Celery/Celeriac	Yes	Mustard	No
Cereals Containing Gluten	No	Nuts (Tree)	No
Barley	No	Almond nuts	No
Oats	No	Brazil nuts	No
Rye	No	Cashew nuts	No
Wheat (including Spelt and Khorasan)	No	Hazelnuts	No
Crustacea	No	Macadamia (Queensland) nuts	No
Eggs	No	Pecan nuts	No
Fish	No	Pistachio nuts	No
Lupin	No	Walnuts	No
Milk	No	Peanuts	No
Molluscs	No	Sesame Seeds	No
		Soybeans	No
		Sulphur Dioxide and Sulphites	No
Palm Oil	No	Alcoholic Strength %Vol (ABV)	0 % Vol
Hydrogenated Vegetable Oil/Fat	No		
GM Protein/DNA	No		

SUPPLEMENTARY INGREDIENT INFORMATION

ADDITIVES

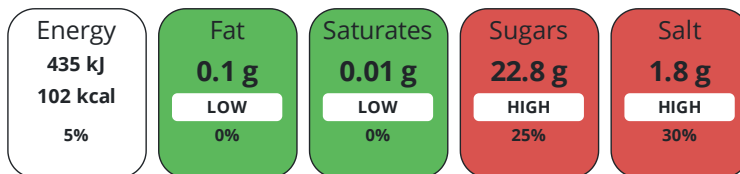
Product Contains:

Artificial Antioxidants	No	Artificial Flavourings	No
Artificial Colours	No	Artificial Preservatives	No
Artificial Flavour Enhancers	No	Artificial Sweeteners	No
Vegan Diet	Suitable for	Vegetarian Diet	Suitable for
Halal Diet	Suitable for	Kosher Diet	Suitable for

DIET
SUITABILITY

NUTRITIONAL
INFORMATION

Each 100g/ml portion contains:



of your reference intake.

Typical values per 100g/ml : Energy 102kcal / 435kJ

Nutrient	per 100g	RI per 100g	per 15g serving	RI per 15g serving
Energy (kJ)	435 kJ	5%	65.3 kJ	1%
Energy (kcal)	102 kcal	5%	15.3 kcal	1%
Fat	0.1 g	0%	-	
of which Saturates	0.01 g	0%	-	
Carbohydrate	23.2 g	9%	3.5 g	1%
of which Sugars	22.8 g	25%	3.4 g	4%
of which Polyols	0 g		-	
of which Starch	0 g		-	
Protein	1.2 g	2%	0.2 g	0%
Salt	1.8 g	30%	0.3 g	5%
Sodium	720 mg		108 mg	

Serving Size 15 g

SUPPLEMENTARY
NUTRITIONAL
INFORMATION

HANDLING &
STORAGE
INFORMATION

Directions For Use

Ready to use sauce.

Storage Instructions

Refrigerate after opening and use within 8 weeks.

Shelf Life from Time of Production	456 Days	Exempt From Shelf Life Labelling	No
---	----------	---	----

ACCREDITATIONS/
CERTIFICATIONS/
ASSURANCE
SCHEMES
ORIGIN

BRCGS Certified

Product Country of Origin/Place of Netherlands (the)

Provenance

Additional Origin Details

n/a

PRODUCT
CHARACTERISTICS

Standards Testing

CONFIGURATION	Case Configuration		Inner Pack Configuration				
	Total Quantity of Inner Components in Outer Case	6 Units					
	Is the Outer Case Splittable?	No					
PRODUCT WEIGHTS	Inner Component						
	Variable Weight Consumer Item	No					
	Inner Component Weight	1.35 kg					
	Outer Case						
	Outer Case Gross Weight	8.6 kg					
	Outer Case Net Weight	8.1 kg					
PRODUCT DIMENSIONS	Inner Component						
	Inner Component Depth	84 mm					
	Inner Component Width	102 mm					
	Inner Component Height	267 mm					
	Outer Case						
	Outer Case Depth	263 mm					
	Outer Case Width	213 mm					
	Outer Case Height	276 mm					
PALLET INFORMATION	Quantity of Cases Per Pallet Layer	20 Cases	Pallet Height	1.5 MTR			
	Quantity of Layers Per Pallet	5 Layers	Pallet Gross Weight	890 kg			
	Quantity of Cases Per Pallet	100 Cases					
PACKAGING	Inner Component Packaging						
	Type	Materials	Weight	Recycled Plastic %	Recyclable	Returnable	Composite
	Bottle	Plastic	59.8 g	- %			
	Outer Case Packaging						
	Type	Materials	Weight	Recycled Plastic %	Recyclable	Returnable	Composite
	Case	Plastic	20 g	- %			
	Case	Paper/Cardboard	54.5 g	- %			
	Transport Packaging						
	Type	Materials	Weight	Recycled Plastic %	Recyclable	Returnable	Composite
	Other	Plastic	594 g	- %			
	Other	Paper/Cardboard	2840 g	- %			
	Other	Wood	30000 g	- %			
	OTHER INFORMATION CONTACT INFORMATION	Address					
		H.J. Heinz					
		The Shard					
		32 London Bridge Street					
		London					
SE1 9SG							
England							
P: (Phone) 02037 650500							

The information on the [Erudus System](#) has been supplied by the manufacturers of the products and, whilst the owners of the Erudus System take steps to ensure the information is regularly updated, they give no warranty and no guarantee that the information is accurate. Product information and ingredients may change, please always read product labels carefully in addition to using the information provided by Erudus.

We do not accept liability for any inaccuracies or incorrect information contained on this site.
Please visit <http://www.erudus.com/terms-and-conditions> for full terms and conditions.