

Changed Sep 28, 2023 08:59

Erudus ID 0c54a1a2874b4b7da035cc2cc932825a

Version 1.0

09256

Summertime Mint Choc Ripple 4 litre

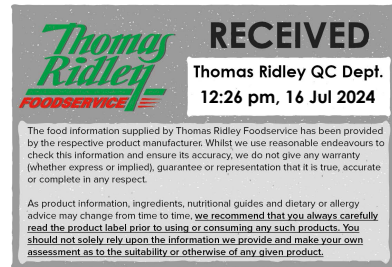
Mint Choc Ripple

PRODUCT DESCRIPTION

Mint flavour ice cream with Chocolate Ripple

Brand	Suncream Dairies Ltd.
Manufacturer Product Code	ASUMT4
Product Type	Food
Product Category	Desserts
Storage Type	Frozen
Erudus ID	0c54a1a2874b4b7da035cc2cc932825a
Specification Type	Legacy

Inner Component GTIN	5010603000807
Outer Case GTIN	15010603000804



INGREDIENTS

Ingredient Declaration

Water, Sugar, Palm Oil, Chocolate Flavour Syrup (6%) (Water, Sugar, Cocoa Powder, Emulsifier (Xanthan Gum)), Buttermilk Powder (MILK), Whey Powder (MILK), Dextrose, Skimmed MILK Powder, Emulsifier (Mono and Di Glycerides of Fatty Acids), Stabilisers (Cellulose Gum, Guar Gum, Locust Bean Gum), Colours (Sodium Copper Chlorophyllin, Curcumin) Natural Peppermint Flavouring.

ALLERGENS

Product Contains:

Celery/Celeriac	No	Mustard	No
Cereals Containing Gluten	No	Nuts (Tree)	No
Barley	No	Almond nuts	No
Oats	No	Brazil nuts	No
Rye	No	Cashew nuts	No
Wheat (including Spelt and Khorasan)	No	Hazelnuts	No
Gluten content <20ppm	Yes	Macadamia (Queensland) nuts	No
Crustacea	No	Pecan nuts	No
Eggs	No	Pistachio nuts	No
Fish	No	Walnuts	No
Lupin	No	Peanuts	No
Milk	Yes	Sesame Seeds	No
Molluscs	No	Soybeans	No
		Sulphur Dioxide and Sulphites	No

SUPPLEMENTARY INGREDIENT INFORMATION

Palm Oil	Yes
Hydrogenated Vegetable Oil/Fat	No
GM Protein/DNA	No

ADDITIVES

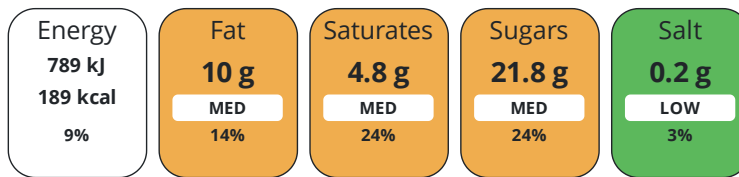
Product Contains:

Artificial Antioxidants	No	Artificial Flavourings	No
Artificial Colours	No	Artificial Preservatives	No
Artificial Flavour Enhancers	No	Artificial Sweeteners	No
Suitable for Coeliacs	Yes	Halal Diet	No
Kosher Diet	No	Vegetarian Diet	Suitable for
Vegan Diet	No		

DIET SUITABILITY

NUTRITIONAL INFORMATION

Each 100g/ml portion contains:



of your reference intake.

Typical values per 100g/ml : Energy 189kcal / 789kj

Nutrient	per 100g/ml	RI per 100g/ml	per 100g/ml serving	RI per 100g/ml serving
Energy (kJ)	789 kJ	9%	789 kJ	9%
Energy (kcal)	189 kcal	9%	189 kcal	9%
Fat	10 g	14%	10 g	14%
of which Saturates	4.8 g	24%	4.8 g	24%
of which Mono-unsaturates	3.3 g		3.3 g	
of which Polyunsaturates	0.9 g		0.9 g	
Carbohydrate	21.8 g	8%	21.8 g	8%
of which Sugars	21.8 g	24%	21.8 g	24%
Fibre	0.3 g		0.3 g	
Protein	2.6 g	5%	2.6 g	5%
Salt	0.2 g	3%	0.2 g	3%
Sodium	100 mg		100 mg	

Serving Size 100 g

VITAMINS AND MINERALS

Nutrient	per 100g/ml	RI per 100g/ml	per 100g/ml serving	RI per 100g/ml serving
Folate/Folic Acid	1 µg	1%	1 µg	1%
Calcium	106 mg	13%	106 mg	13%
Iron	0.2 mg	1%	0.2 mg	1%
Zinc	0.3 mg	3%	0.3 mg	3%

SUPPLEMENTARY NUTRITIONAL INFORMATION

Trans Fats per 100 g/ml 0 g

HANDLING &
STORAGE
INFORMATION

Directions For Use

Scoop from frozen

Storage Instructions

Always store frozen. Store at -18°C or below. Do not refreeze once defrosted.

Shelf Life from Time of Production 730 Days

ACCREDITATIONS/
CERTIFICATIONS/
ASSURANCE
SCHEMES
ORIGIN

BRCGS Certified

Other Accreditation

Rainforest Alliance

Product Country of Origin/Place of United Kingdom

Provenance

Additional Origin Details

UK

PRODUCT
CHARACTERISTICS

Standards Testing

Do you undertake trend analysis of microbiological results? Yes

Is shelf life testing undertaken? Yes

Microbiological Standards

Organism	Description	Frequency	Target	Maximum	Sample (g or ml)
E. Coli (cfu/g or ml)	g	Annually	=0	0	1
Enterobacteriaceae (cfu/g or ml)	g	Every Batch	<10	100	1
Listeria SPP (cfu/g or ml)	g	Annually	<0	0	25
Listeria Monocytogenes (cfu/g or ml)	g	Annually	<0	0	25
Staphylococcus Aureus (cfu/g or ml)	g	Annually	=0	100	1
Total Viable Count (TVC) (cfu/g or ml)	g	Every Batch	<100000	300000	1
Salmonella (cfu/g or ml)	g	Annually	<0	0	25
Bacillus Cereus (cfu/g or ml)	g	Annually	<0	50	1

CONFIGURATION

Case Configuration

Inner Pack Configuration

Total Quantity of Inner Components in 6 Units

Outer Case

Is the Outer Case Splittable? Yes

PRODUCT
WEIGHTS

Inner Component

Variable Weight Consumer Item Yes

Inner Component Weight 1450 g

Net Drained Weight 0 kg

Weight/Volume

4 litre

Outer Case

Outer Case Gross Weight 9.8 kg

Outer Case Net Weight 8.7 kg

PRODUCT DIMENSIONS

Inner Component	
Inner Component Depth	228 mm
Inner Component Width	167 mm
Inner Component Height	153 mm
Outer Case	
Outer Case Depth	493 mm
Outer Case Width	228 mm
Outer Case Height	298 mm

PALLET INFORMATION

Quantity of Cases Per Pallet Layer	10 Cases	Pallet Height	1.7 MTR
Quantity of Layers Per Pallet	5 Layers	Pallet Gross Weight	490 kg
Quantity of Cases Per Pallet	50 Cases		

PACKAGING

Inner Component Packaging						
Type	Materials	Weight	Recycled Plastic %	Recyclable	Returnable	Composite
Tub	Plastic	130 g	0.00 %			
Outer Case Packaging						
Type	Materials	Weight	Recycled Plastic %	Recyclable	Returnable	Composite
Case	Plastic	4 g	0.00 %			
Case	Paper/Cardboard	322 g	- %			
Transport Packaging						
Type	Materials	Weight	Recycled Plastic %	Recyclable	Returnable	Composite
Other	Plastic	168 g	0.00 %		Yes	
Other	Paper/Cardboard	3 g	- %		Yes	
Other	Wood	28000 g	- %		Yes	

OTHER INFORMATION

Manufacturer Comments
None

CONTACT INFORMATION

Address	Technical Contact
Suncream Dairies Ltd.	Joanna Kucz
Unit 7D Claymore	Quality Manager
Tame Valley Industrial Estate	JoannaKucz@suncreamdairies.com
Tamworth	
Staffordshire	P: (Phone) 01827 282571 or 07717671677
B77 5DQ	
United Kingdom	
P: (Phone) 01827 282571	
Complaints Contact	Commercial Contact
Joanna Kucz	Gillian Graham
Quality Manager	Head of Sales
JoannaKucz@suncreamdairies.com	gilliangraham@suncreamdairies.com
P: (Phone) 07717671677	P: (Phone) 07834728903

The information on the [Erudus System](#) has been supplied by the manufacturers of the products and, whilst the owners of the Erudus System take steps to ensure the information is regularly updated, they give no warranty and no guarantee that the information is accurate. Product information and ingredients may change, please always read product labels carefully in addition to using the information provided by Erudus.

We do not accept liability for any inaccuracies or incorrect information contained on this site.
Please visit <http://www.erudus.com/terms-and-conditions> for full terms and conditions.